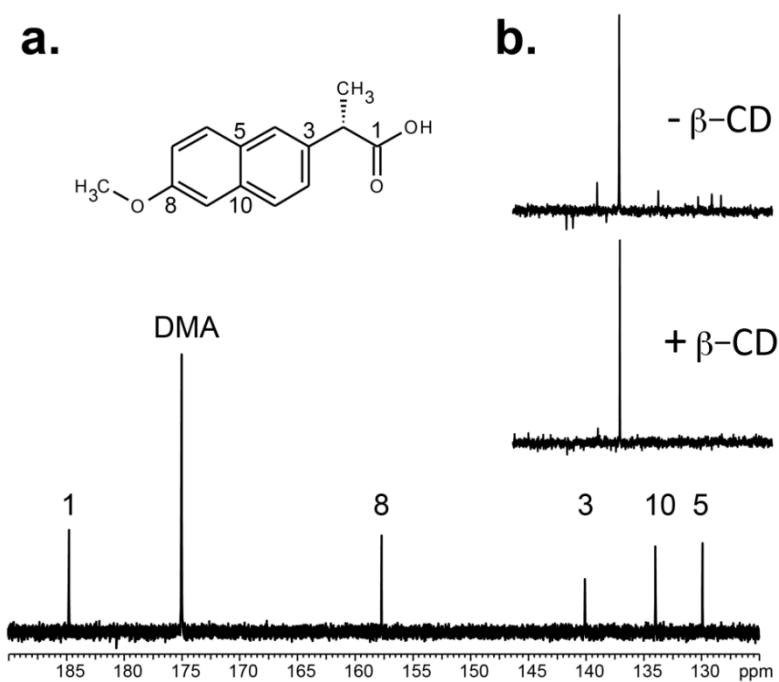


Generating contrast in hyperpolarized ^{13}C MRI using ligand–receptor interactions

Kayvan R. Keshari^a, John Kurhanewicz^a, Jeffrey M. Macdonald^b, and David M. Wilson^a

^a Department of Radiology, University of California San Francisco, San Francisco, USA. E-mail: david.m.wilson@ucsf.edu; Tel: (415)353-1668

^b Department of Biomedical Imaging, University of North Carolina Chapel Hill (UNC-CH), Chapel Hill, North Carolina, USA



Supplementary Figure 1. (a) Hyperpolarized ^{13}C spectrum of natural abundance naproxen, obtained in a single 5° pulse. The labeled (long T_1) carbon resonances are seen as is the carbonyl carbon of dimethylacetamide (DMA). (b) Effect of adding the β -cyclodextrin receptor on hyperpolarized signals. Only the C1 carbon resonance is visualized.