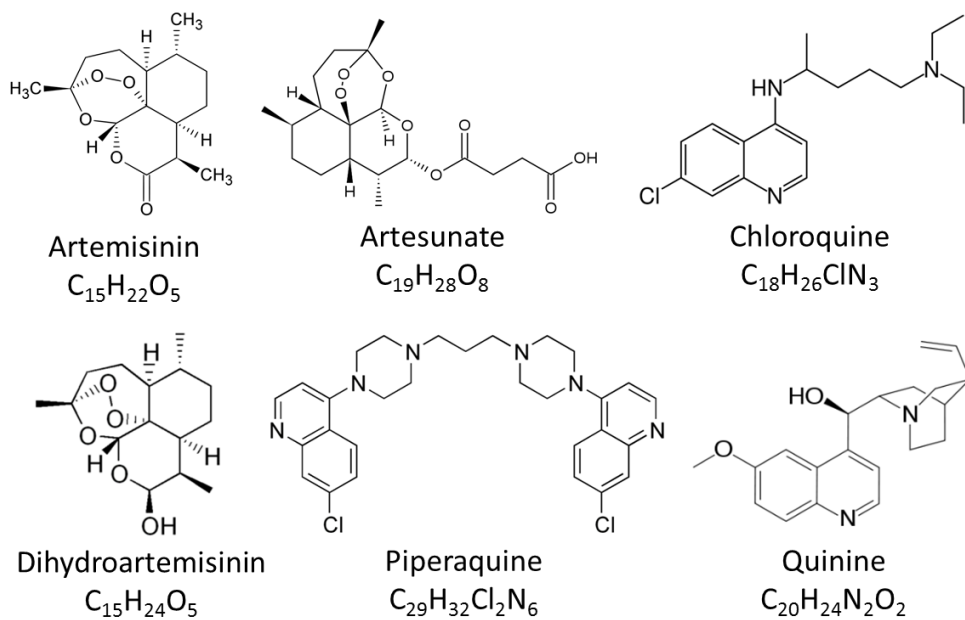
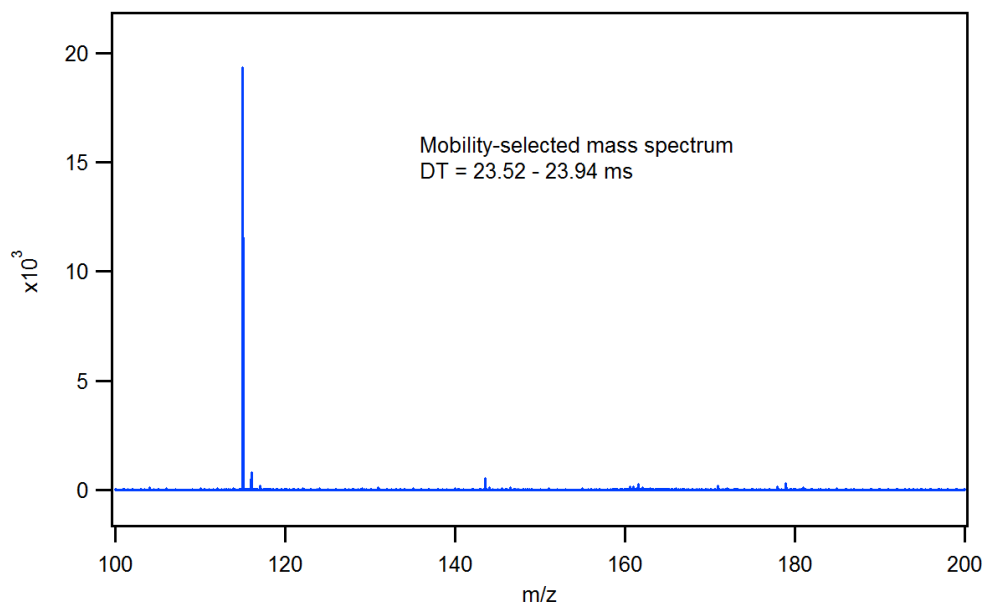


Supplementary information for “Coupling Laser Ablation/Desorption Electrospray Ionization to Atmospheric Pressure Drift Tube Ion Mobility Spectrometry for the Screening of Antimalarial Drug Quality”

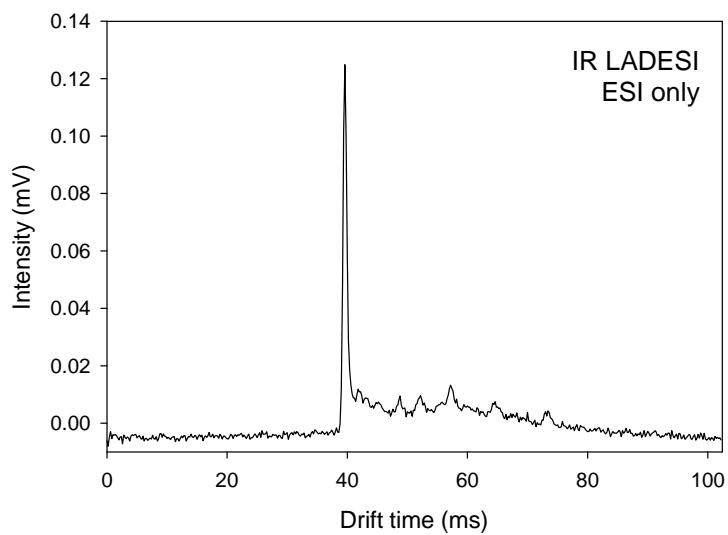
By, Harris, Glenn A. *et al.*



**Supplementary Figure S1:** Structures and molecular formulas of the six active pharmaceutical ingredients (APIs) encountered in this study.



**Supplementary Figure S2:** Extracted mass spectrum at drift time  $t_d = 23.8$  ms (peak iii) of tablet number three containing chloroquine.



**Supplementary Figure S3:** Typical ion mobility background spectrum of LADESI electrospray solvent.