

Supplementary Information

N-acetylglucosamine Biofunctionalized CdSeTe quantum dots as fluorescence probe for specific protein recognition.

Fang-Fang Cheng, Guo-Xi Liang, Yuan-Yuan Shen, Rohit Kumar Rana, and Jun-Jie Zhu*

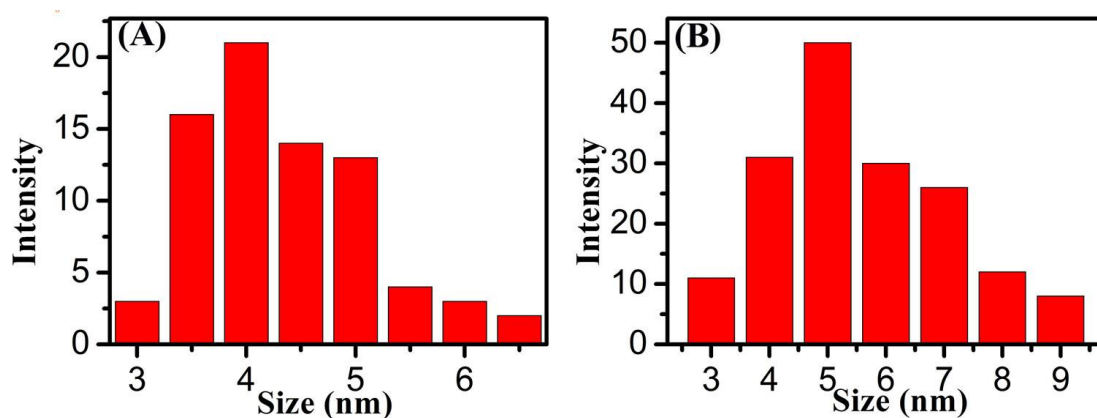


Figure S1. Size distribution of L-cysteine-coated QDs (A) and QD-Con A-GlcNAc (B) by dynamic light scattering measurements

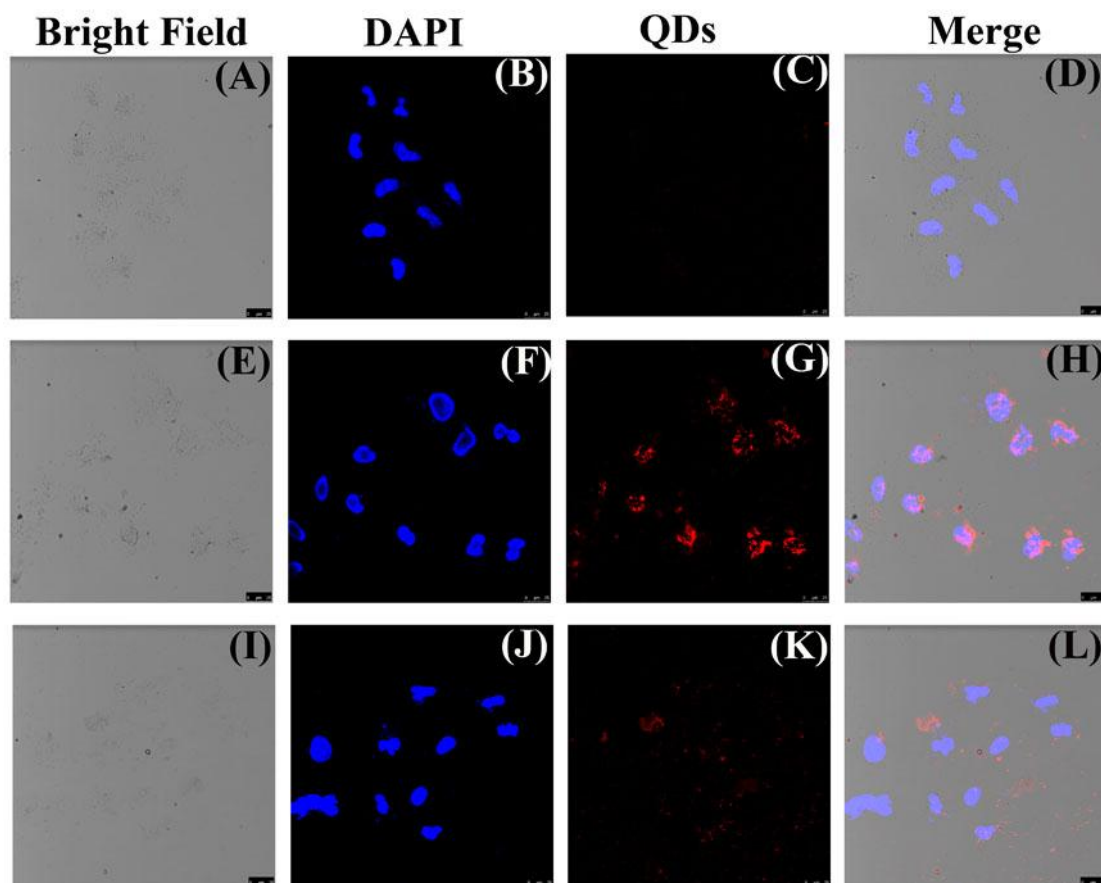


Figure S2. CLSM of HeLa cells after incubation with QDs-Con A in the presence of free Con A (A-D), QD-Con A-GlcNAc in the presence of free Con A (E-H) and QD-Con A-GlcNAc in the presence of GlcNAc (I-L) . The scale bar: 25 μ m.