

Electronic Supplementary Information

Flow injection chemiluminescence immunoassay of Microcystin-LR by using PEI-modified magnetic beads as capturer and HRP-functionalized silica nanoparticles as signal amplifier

Jusheng Lu, Wei Wei, Lihong Yin, Yuepu Pu, Songqin Liu*

School of Chemistry and Chemical Engineering, Key Laboratory of Environmental Medicine Engineering, Ministry of Education, Southeast University, Jiangning District, Nanjing, 211189, P.R. China.

*Corresponding author at: School of Chemistry and Chemical Engineering, Southeast University, Nanjing, 211189, P. R. China. Tel.: 86-25-52090613; Fax: 86-25-52090618.

E-mail addresses: liusq@seu.edu.cn (S. Q. Liu)

Fig. S1 Schematic diagram of flow injection chemiluminescence immunoassay

for MC-LR. (a) On-line cyclic incubation of MB/PEI/Ab1/MC-LR and Ab2/Si; (b) FI-CL detection of MC-LR. P1, P2, peristaltic pump; V, eight-port valve; F, flow cell; W, waste; PMT, photomultiplier.

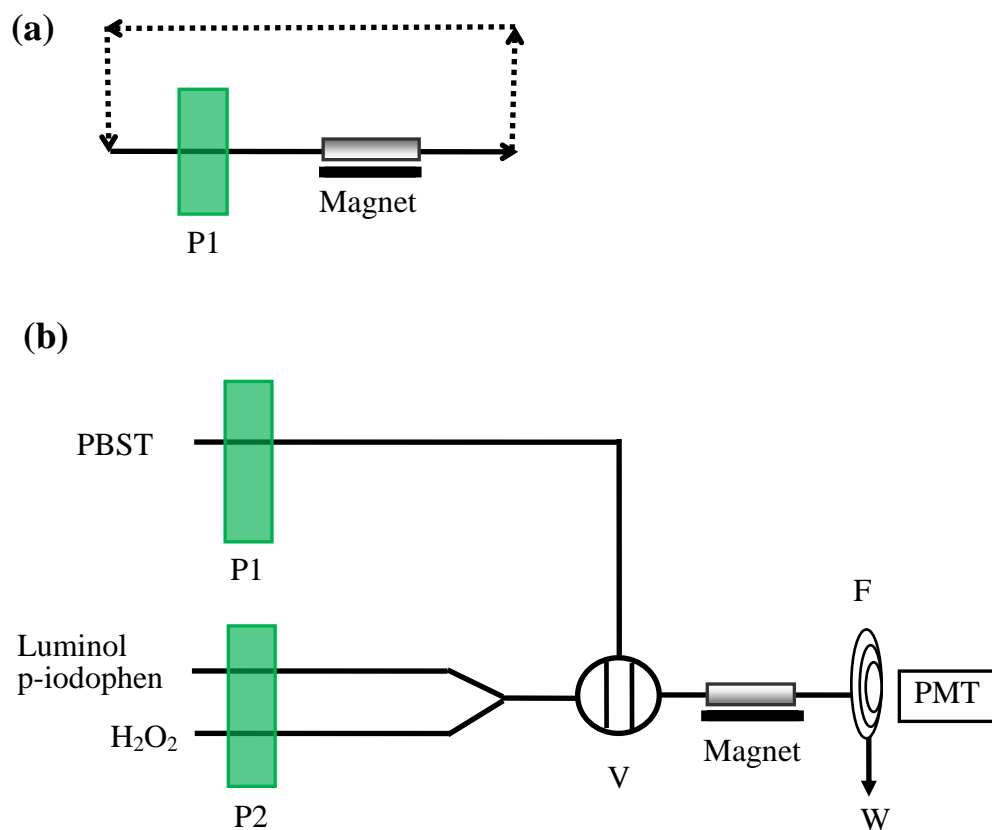


Fig. S2 SEM images of MB (a) and MB-PEI (b).

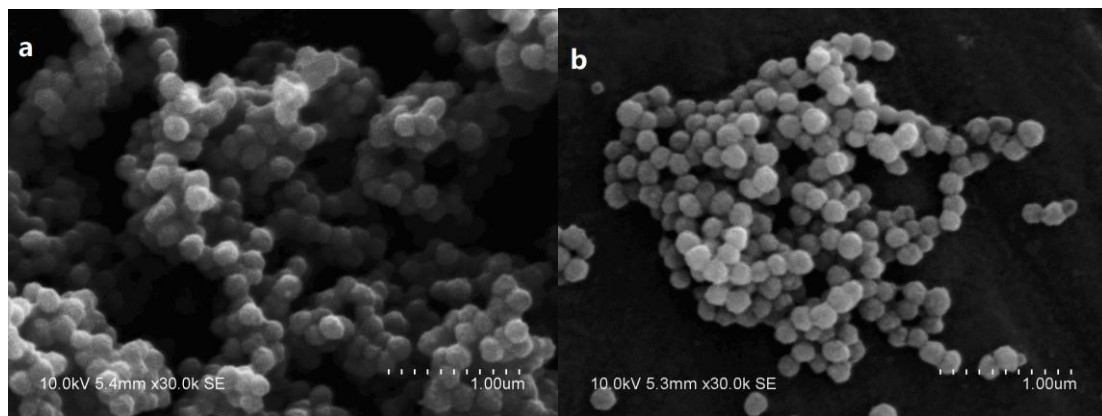


Figure S3 Comparison of on-line cyclic incubation at different flow rate (a), off-line pre-mixed incubation and on-line cyclic incubation at flow rate of $2 \mu\text{L s}^{-1}$ (b).

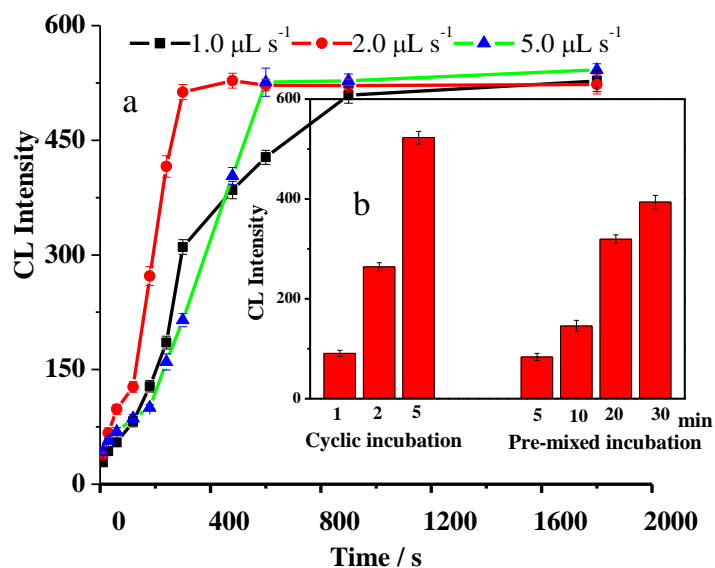


Figure S4 Repeated use of MB/PEI/Ab1 after regeneration by 0.1 mol L^{-1} Glycine/HCl (pH 3.0)

