

## Electronic Supplementary Information (ESI)

### **Dendrimer-stabilized bismuth sulfide nanoparticles: Synthesis, characterization, and potential computed tomography imaging applications**

**Yi Fang,<sup>ab</sup> Chen Peng,<sup>a</sup> Rui Guo,<sup>b</sup> Linfeng Zheng,<sup>c</sup> Jinbao Qin,<sup>d</sup> Benqing Zhou,<sup>b</sup> Mingwu Shen,<sup>b</sup> Xinwu Lu,<sup>\*d</sup> Guixiang Zhang,<sup>\*c</sup> and Xiangyang Shi<sup>\*abe</sup>**

<sup>a</sup> *State Key Laboratory for Modification of Chemical Fibers and Polymer Materials, Donghua University, Shanghai 201620, People's Republic of China*

<sup>b</sup> *College of Chemistry, Chemical Engineering and Biotechnology, Donghua University, Shanghai 201620, People's Republic of China. Fax: 0086-21-67792306-804; Tel: 0086-21-67792656; E-mail: [xshi@dhu.edu.cn](mailto:xshi@dhu.edu.cn)*

<sup>c</sup> *Department of Radiology, Shanghai First People's Hospital, School of Medicine, Shanghai Jiao Tong University, Shanghai 200080, People's Republic of China. E-mail: [guixiangzhang@sina.com](mailto:guixiangzhang@sina.com)*

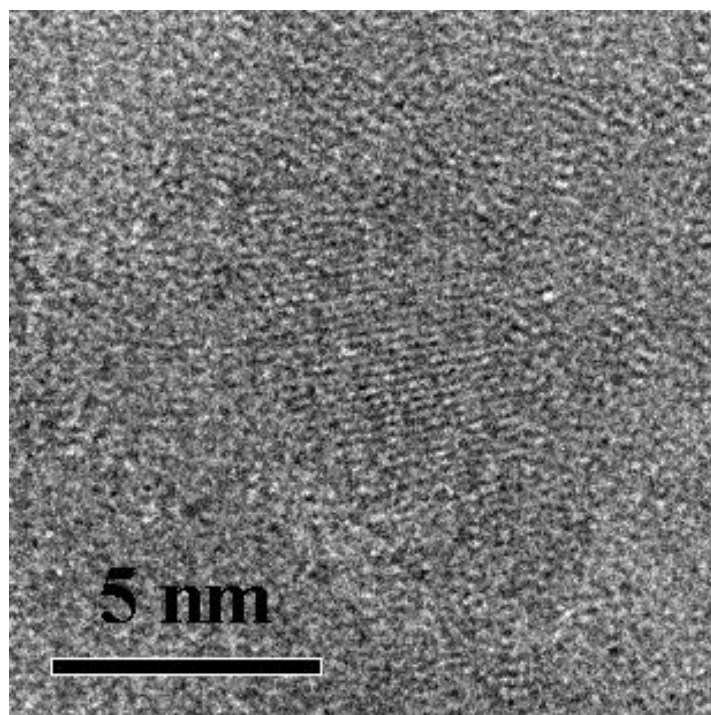
<sup>d</sup> *Department of Vascular Surgery, Shanghai Ninth People's Hospital Affiliated to Shanghai JiaoTong University, School of Medicine, Shanghai 200011, People's Republic of China. E-mail: [luxinwu@yahoo.com.cn](mailto:luxinwu@yahoo.com.cn)*

<sup>e</sup> *CQM- Centro de Química da Madeira, Universidade da Madeira, Campus da Penteada, 9000-390 Funchal, Portugal*

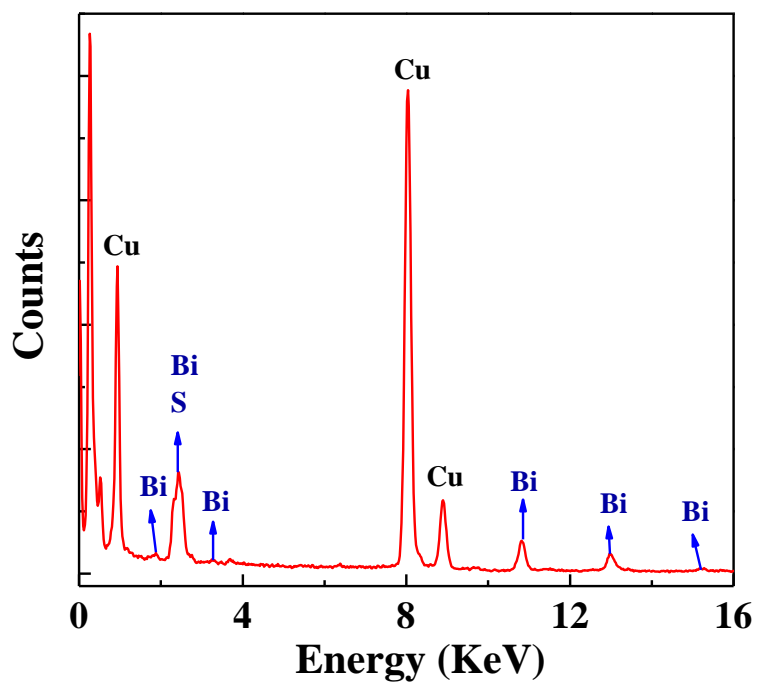
**Table S1.** Comparison of the theoretical  $\text{Bi}_2\text{S}_3$  content versus the one measured by TGA for  $\text{Bi}_2\text{S}_3$

DSNPs with different compositions.

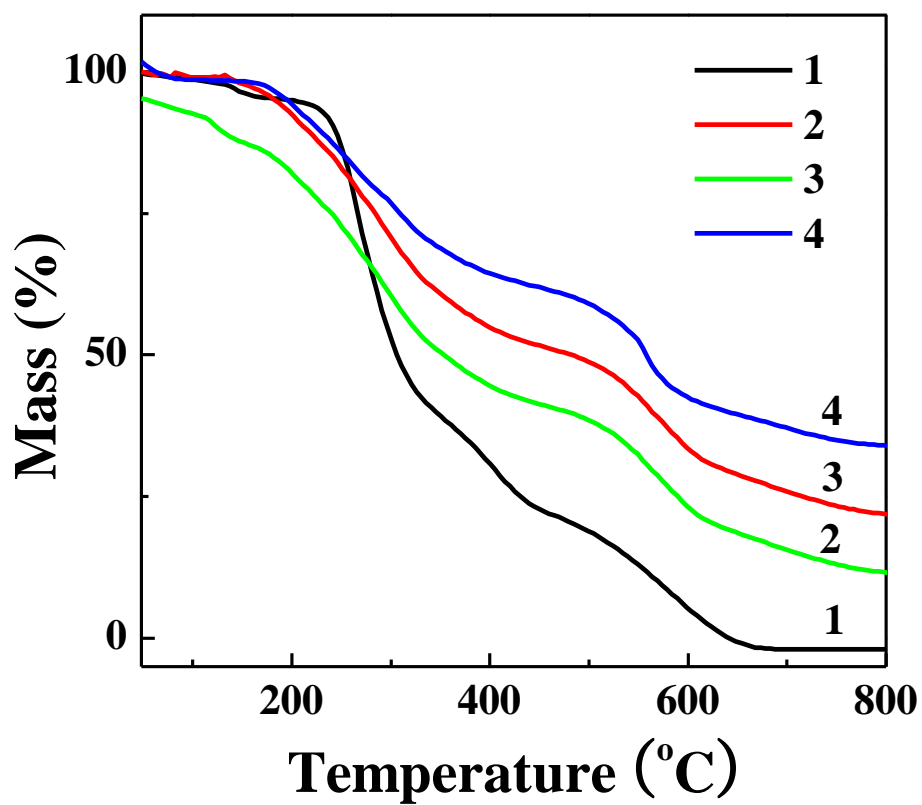
Sample	Theoretical Value	Actual Value
	(%)	(%)
Bi DSNP10	12.09	13.65
Bi DSNP20	21.58	23.97
Bi DSNP40	35.50	35.96



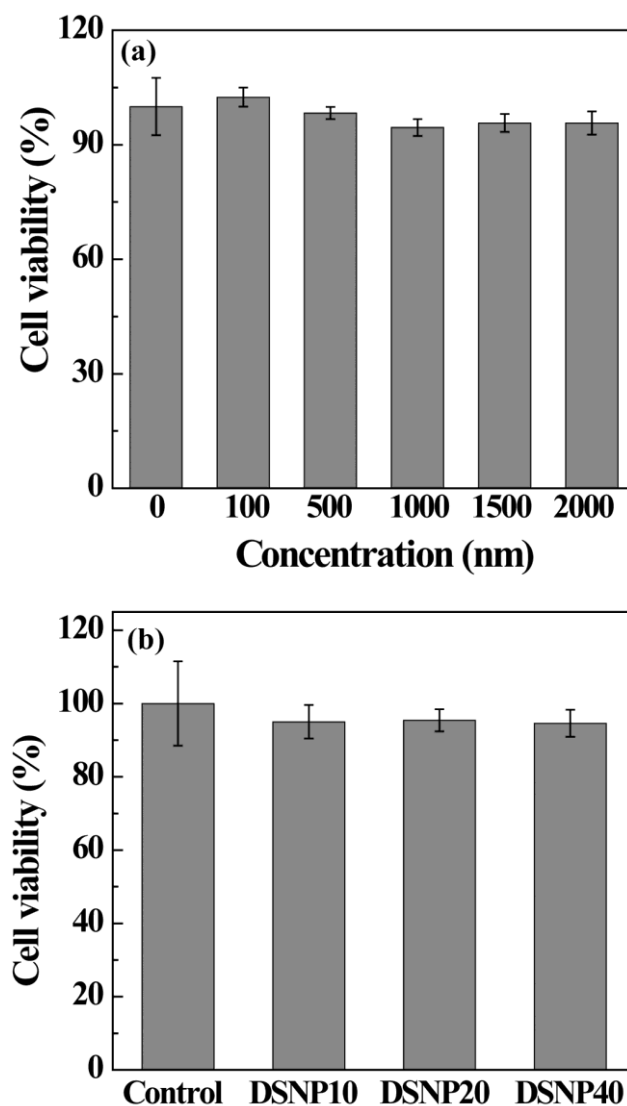
**Figure S1.** High-resolution TEM image of a typical DSNP10 sample. In the image, only one particle is shown.



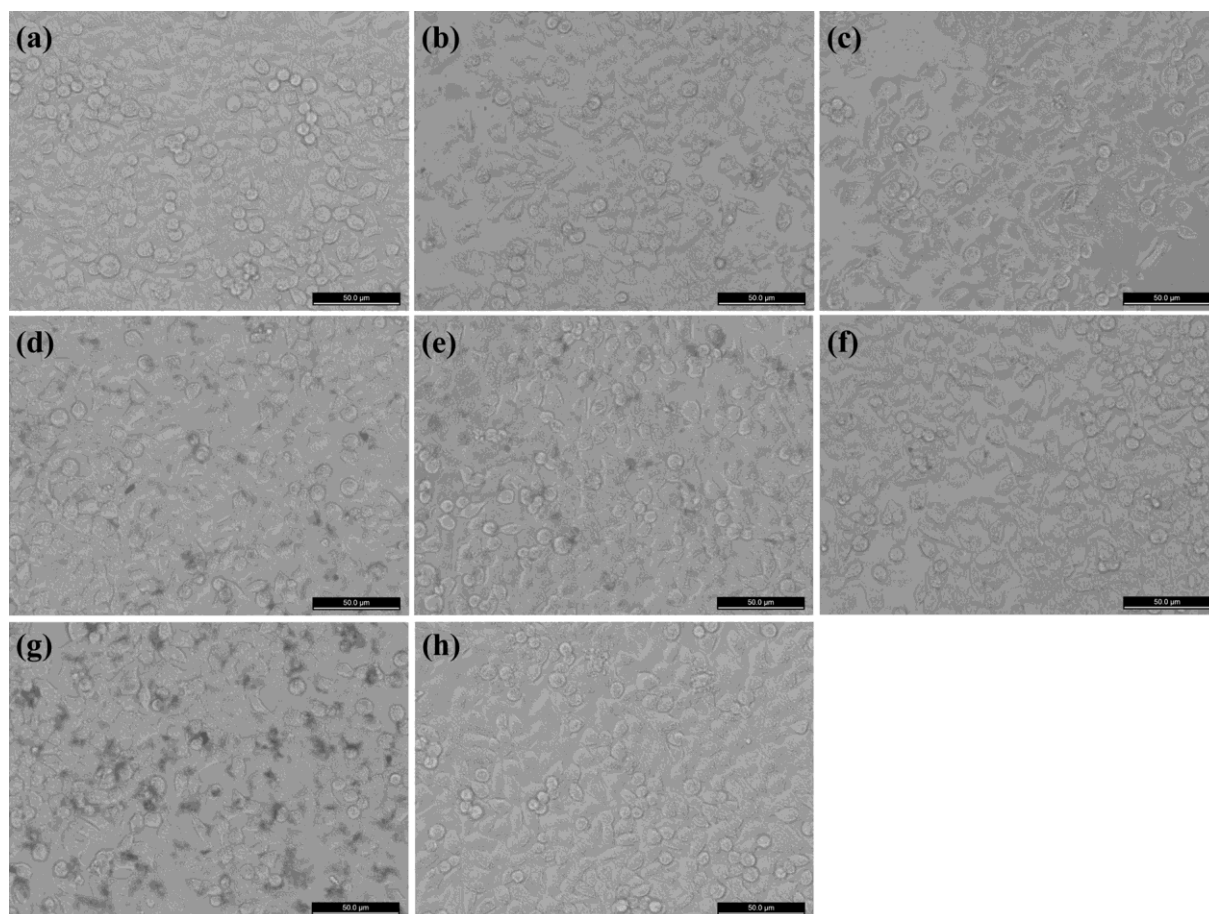
**Figure S2.** EDS spectrum of a typical DSNP20 sample.



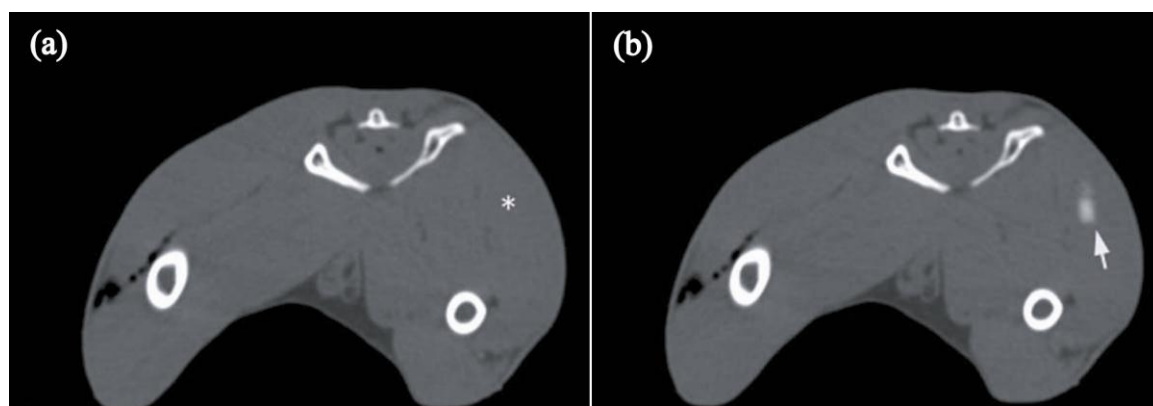
**Figure S3.** TGA curves of G4.GlyOH (1), DSNP10 (2), DSNP20 (3), and DSNP40 (4) samples.



**Figure S4.** MTT assay of the viability of KB cells after treatment with (a) DSNP20 at a concentrations ranging from 0 to 2000 nM and (b) DSNP10, DSNP20, and DSNP40 at the concentration of 2000 nM. The data are expressed as mean  $\pm$  S. D. (n=3).



**Figure S5.** Phase-contrast photomicrographs of KB cells treated with DSNP20 at the concentration of (a) 100 nM, (b) 500 nM, (c) 1000 nM, (d) 1500 nM, and (e) 2000 nM, respectively, KB cells treated with 2000 nM of (f) DSNP10 and (g) DSNP40, and KB cells treated with (h) PBS buffer.



**Figure S6.** CT images of a rabbit before (a) and after (b) subcutaneous injection of 100  $\mu$ L of Omnipaque ( $[I] = 0.1$  mol/L) into its right hind thigh. The asterisk (a) and arrow (b) both point to the injection region.