

Figure S1. Representative re-centered FLIM image for elastic net analysis. Images were Re-centered as 100x100 pixels using the nearest neighbor algorithm in MATLAB: Figures represent the (a) Normal (b) transformed, and (c) cancer cells.

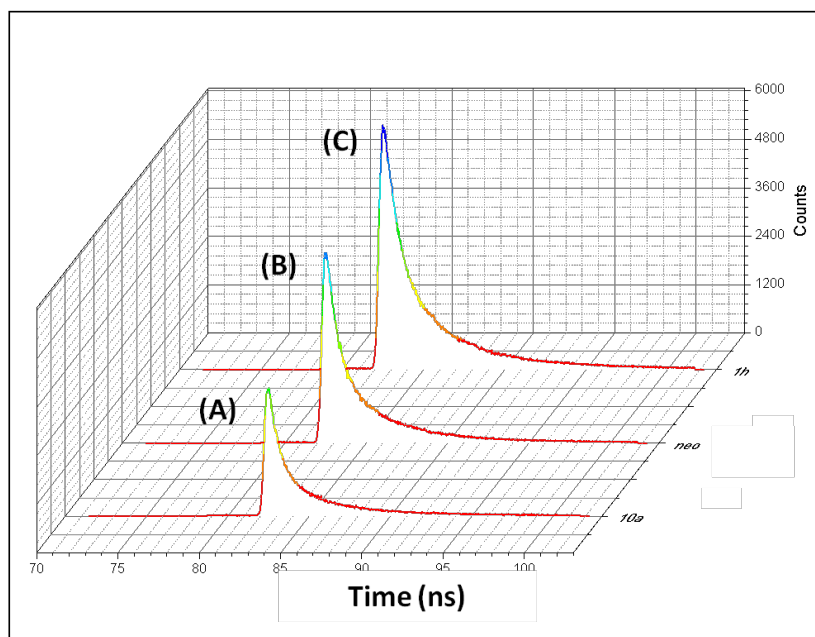


Figure S2. TCSPC Decay Profile for : (A) MCF10A (normal) (B)MCF10AneoT (transform) (C) MCF10CA 1H (cancer)

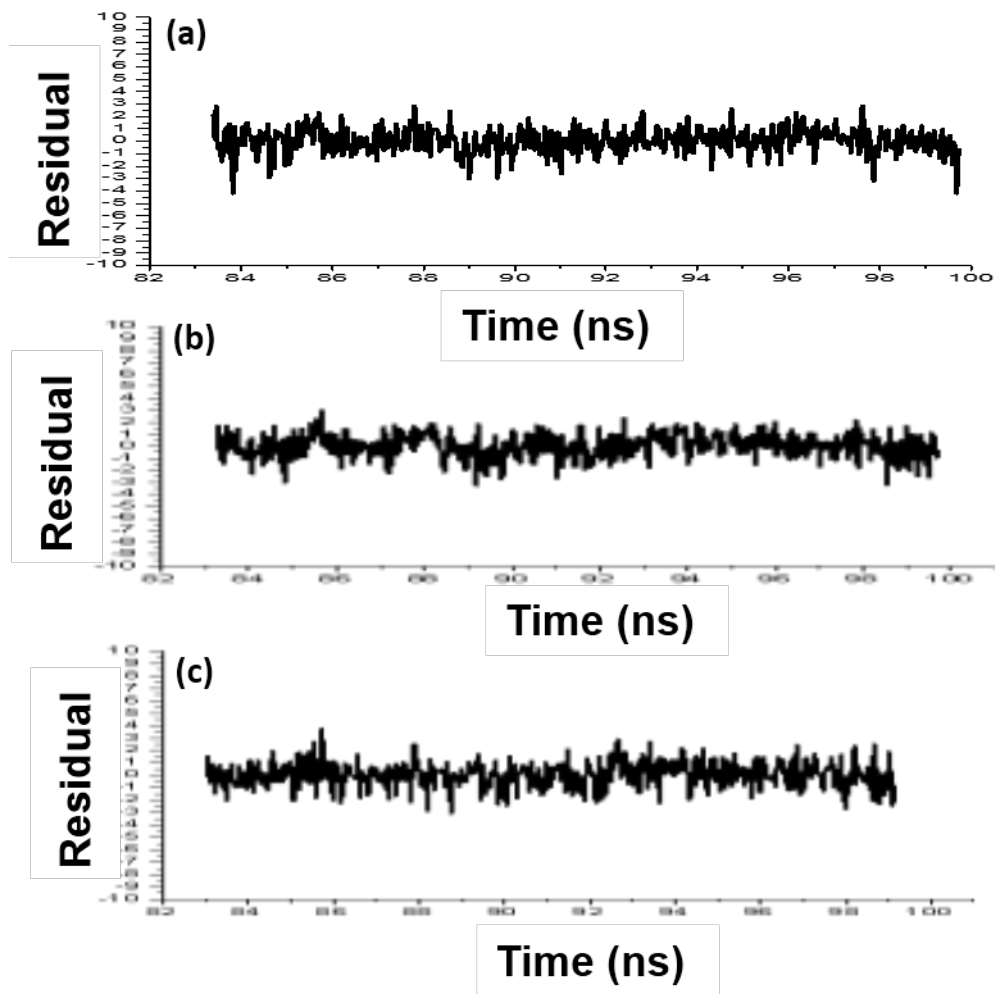


Figure S3. Representative residual pattern for TCSPC iterative reconvolution fit : (A) MCF10A (normal) (B)MCF10AneoT (transform) (C) MCF10CA 1H (cancer)

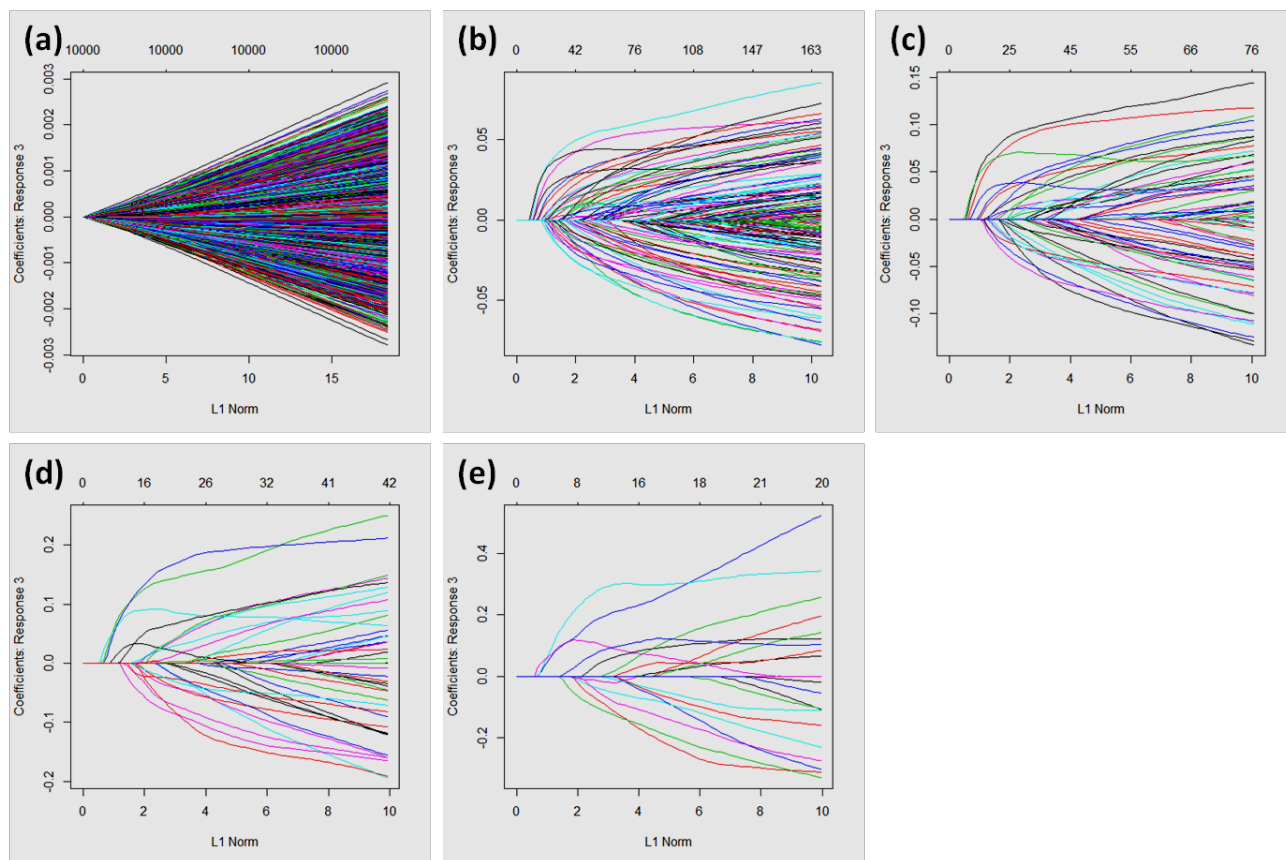


Figure S4. Alpha coefficient optimization for EnA variable selection (a) $\alpha=0$ (ridge regression) (b) $\alpha=0.25$ (c) $\alpha=0.5$ (d) $\alpha=0.75$ (e) $\alpha=1$ (lasso regression)