

1 **Electronic Supplementary Information (ESI) for**
2 **Dual signal amplification strategy for the fabrication of an**
3 **ultrasensitive electrochemiluminescent aptasensor**

4 Min Zhao, Ying Zhuo*, Yaqin Chai, Yun Xiang, Ni Liao, Guofeng Gui, Ruo Yuan*

5 Key Laboratory on Luminescence and Real-Time Analysis, Ministry of Education, School of
6 Chemistry and Chemical Engineering, Southwest University, Chongqing 400715, PR China.

7

8

9

10

11

12

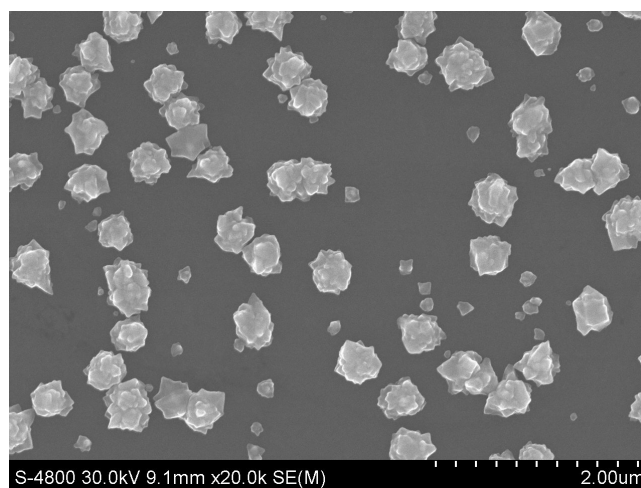
13

14

15

16

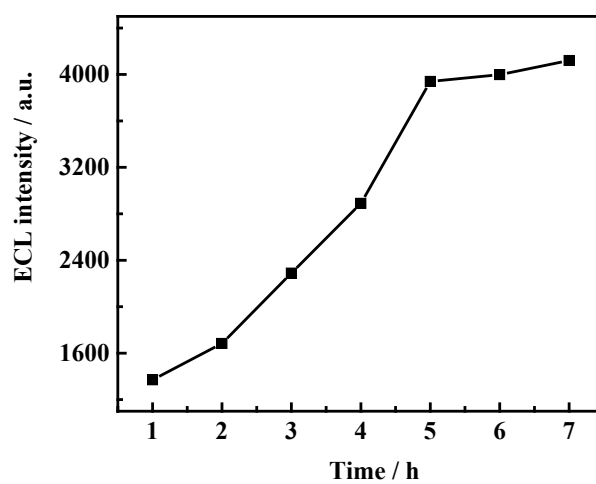
17



1

2

Fig. S1 SEM images of AuNPs.

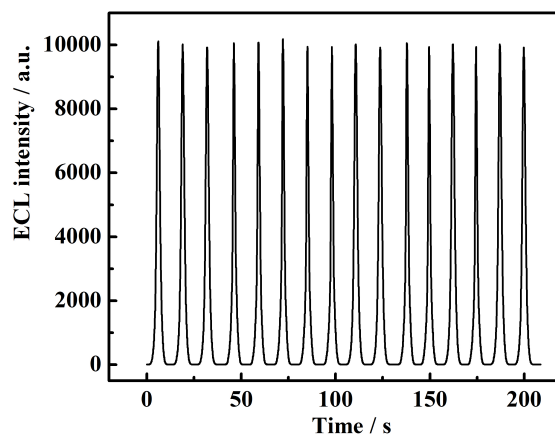


3

4

Fig. S2 The intercalation time of PTC-L-Arg.

5



6

Fig. S3 Stability evaluation of the as-prepared ECL aptasensor for detection 1 nM TB

1 under continuous scanning for 200s.

2