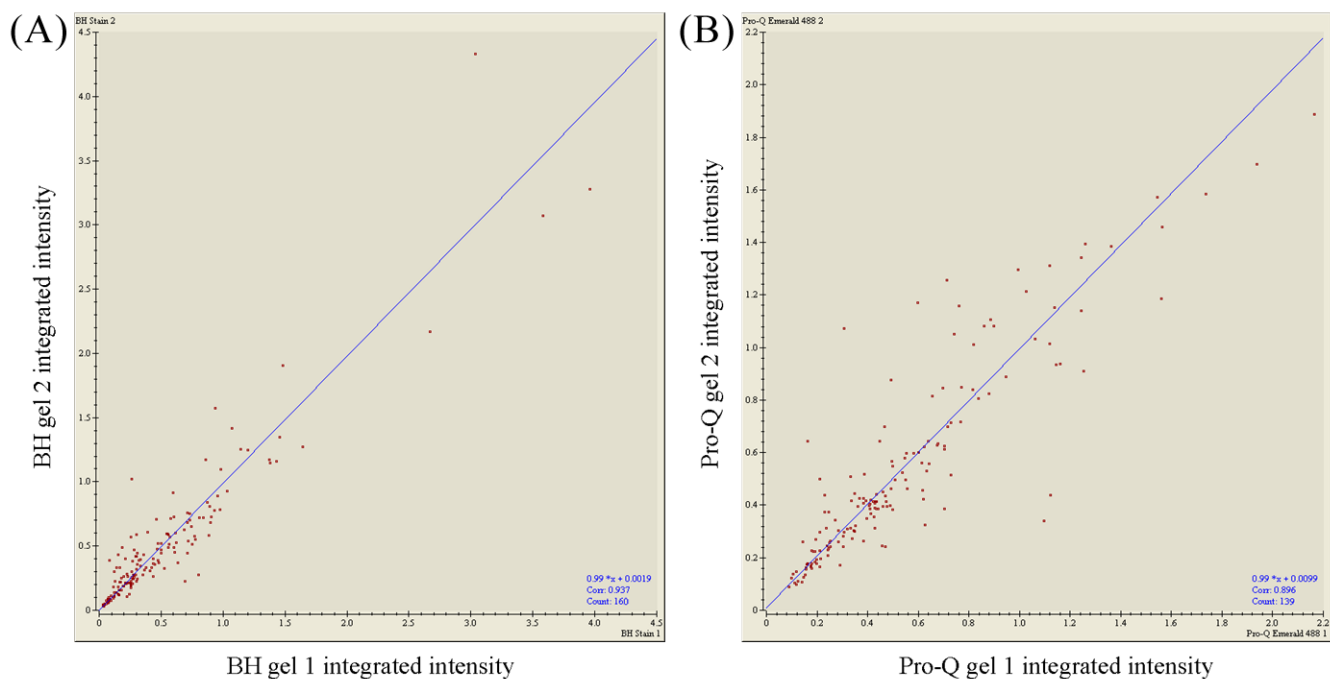


**Table S1.** Comparison of the detection limit of BH stain with Pro-Q Emerald 488 stain.

Glycoprotein name	Staining method (ng/band)	
	BH stain	Pro-Q Emerald 488 stain
Transferrin	4-8	16-32
IgG	32-64	32-64
Ovalbumin	64-125	64-125
$\alpha$ 1-acid glycoprotein	4-8	8-16
Avidin	8-16	8-16



**Figure S1.** Quantitative correlation between corresponding matched spots in differently stained gels. (A) BH: three gels were stained with BH and matched with each other. The integrated intensities of matched spots from every gel were plotted against the corresponding matched spots from the other two gels. The average linear correlation coefficient of the line was determined to be 0.937. (B) Pro-Q Emerald 488: three gels were stained with Pro-Q Emerald 488 and matched to each other. The average linear correlation coefficient of the line was determined to be 0.896.