

Electronic Supplementary Information for

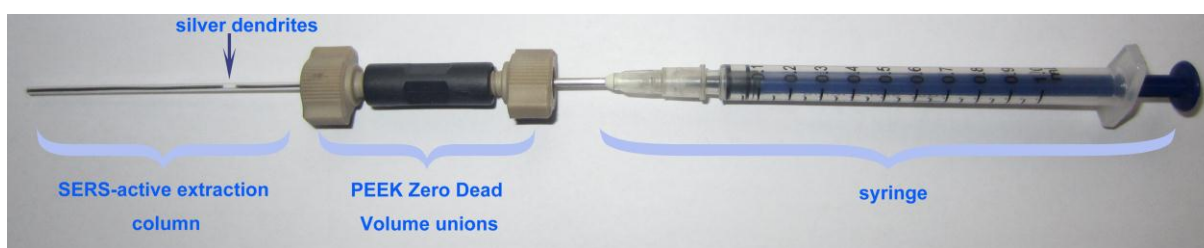
Combination of Solid Phase Extraction and Surface-enhanced Raman Spectroscopy for Rapid Analysis

Yongchao Lai,^a Jingcheng Cui,^a Xiaohong Jiang,^a Sha Zhu^a and Jinhua Zhan*^a

*Key Laboratory for Colloid & Interface Chemistry of Education Ministry, Department of Chemistry,
Shandong University, Jinan 250100 China*

jhzhan@sdu.edu.cn

1. The experimental set-up



2. The list of abbreviation

SERS: Surface-enhanced Raman spectroscopy

SPE: Solid phase extraction

SMA: SubMiniature version A

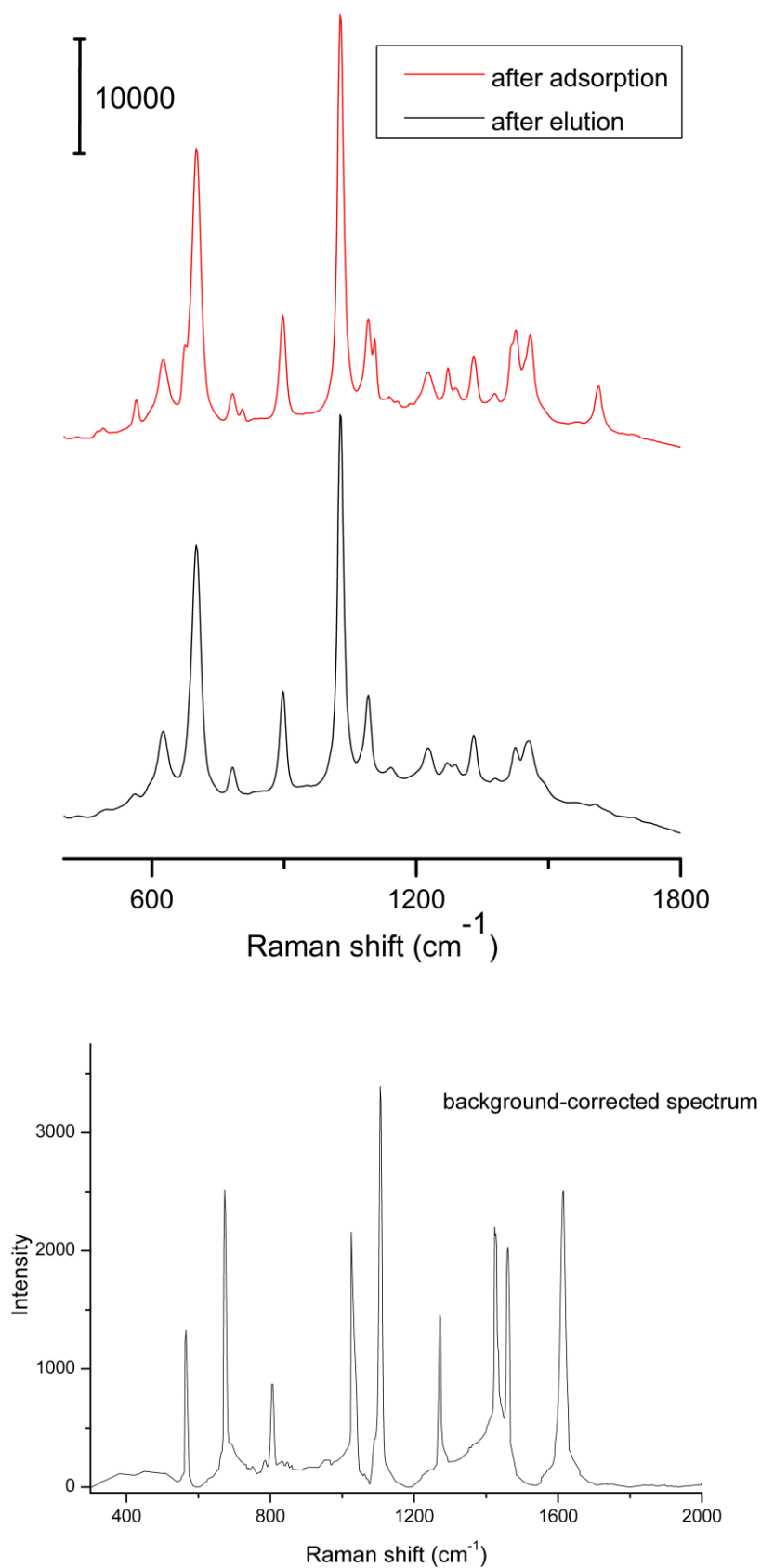
FFT: Full frame transfer

CCD: Charge-coupled device

SEM: Scanning electron microscope

PEEK: Polyether ether ketone

3. SERS spectra of a single cycle and the corresponding background-corrected spectrum.



4. The intensity changes of Fig 6 at 897 cm^{-1}

