

## Supplementary Information

### **Probing site-exclusive binding of aqueous QDs and its organelle-dependent dynamics in live cells by single molecule spectroscopy**

Department of Agricultural and Biological Engineering, Bindley Bioscience Center,

Birck Nanotechnology Center, Purdue Center for Cancer Research,

Purdue University, West Lafayette, Indiana 47907

\* To whom correspondence should be addressed.

*Email: josephi@purdue.edu*

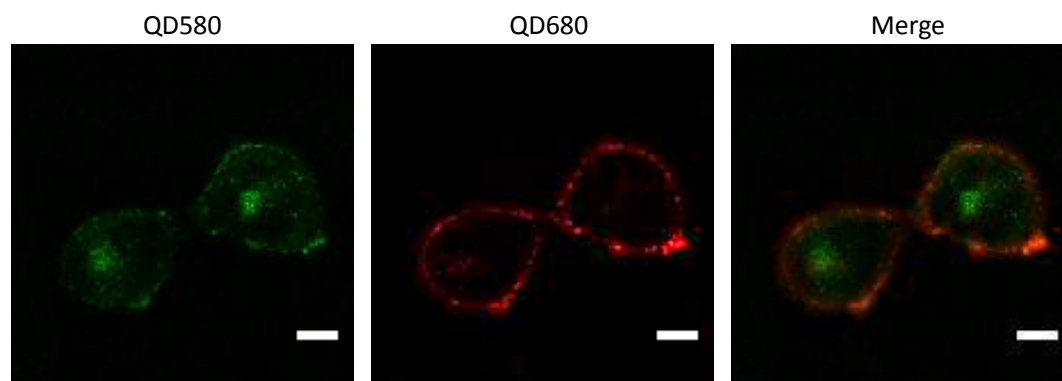


Figure S-1. Confocal images of subcellular localization of NAC-capped QD580 and QD680. A-427 cells were incubated with same concentration of QD580 (in green) and QD680 (in red) mixture for 2 hours. Overlapping signals in merged images appear yellow, the point of focus for FCS and FCCS data acquisition. The scale bar is 10  $\mu\text{m}$ .