

**Ultrasensitive dual amplification sandwich immunosensor
for breast cancer susceptibility gene based on sheet
materials**

Xiang Ren,^a Tao Yan,^a Sen Zhang,^b Xiaoyue Zhang,^a Picheng Gao,^a Dan
Wu,^a Bin Du,^{a,b} Qin Wei^{a,*}

^a Key Laboratory of Chemical Sensing & Analysis in Universities of
Shandong, School of Chemistry and Chemical Engineering, University of
Jinan, Jinan 250022, P.R. China

^b School of Resources and Environmental Sciences, University of Jinan,
Jinan 250022, PRChina

Correspondence: sdjndxwq@163.com (Qin Wei)

Tel: + 86-531-82767872

Fax: + 86-531-82765969

Fig. S1 cyclic voltammogram about electrochemical response before (A) and after (B) the addition of H_2O_2

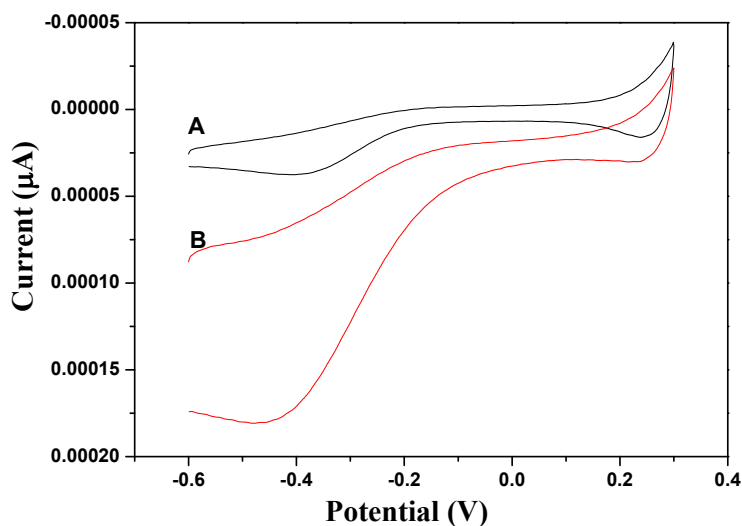
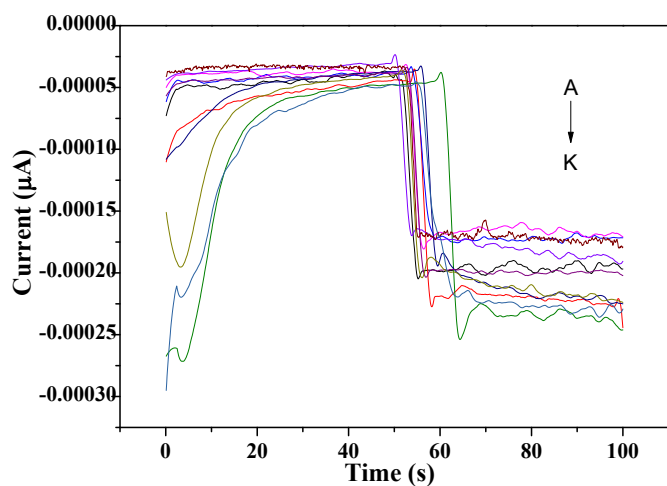


Fig. S2 the current data towards different BRCA1 concentration



In Fig. S2, A is the background current, and from B to K is the current of different BRCA1 concentration. And in optimization of experimental conditions and calibration curve, the data presented in figures were without background current.

