

## Electronic Supplementary Information for the Paper

### **Simultaneous voltammetric determination of dopamine and epinephrine in human body fluid samples using a glassy carbon electrode modified with nickel oxide nanoparticles and carbon nanotubes within a dihexadecylphosphate film**

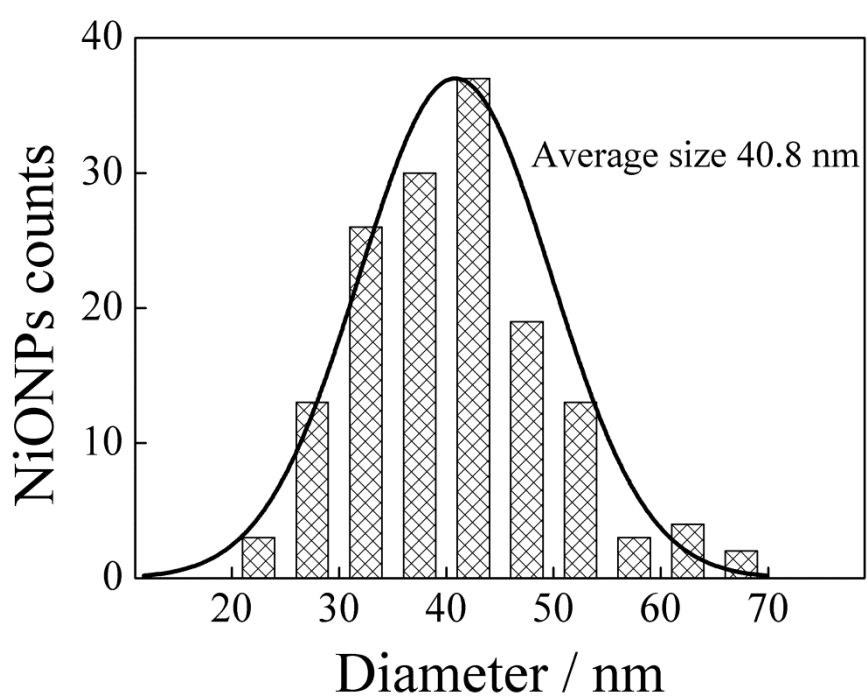
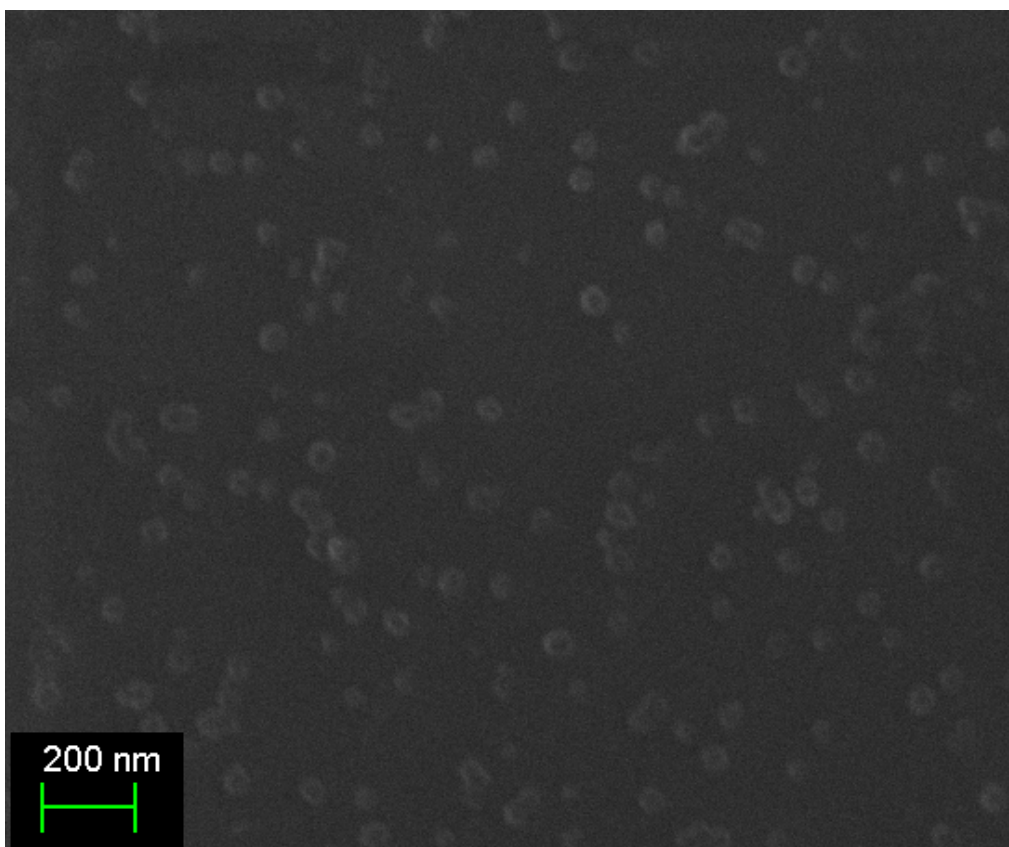
Luiz C. S. Figueiredo-Filho<sup>a</sup>, Tiago A. Silva<sup>a</sup>, Fernando C. Vicentini<sup>a</sup>, Orlando Fatibello-Filho<sup>a\*</sup>

<sup>a</sup>Department of Chemistry, Federal University of São Carlos, Rod. Washington Luís km 235, P. O. Box 676 São Carlos, 13560-970, SP, Brazil.

\* Corresponding author.

Tel.: +55 16 33518098; Fax: +55 16 33518350

E-mail address: bello@ufscar.br (O. Fatibello-Filho)



**Figure S1** SEM image of NiONPs on the surface of GCE and the corresponding histogram of the NiONPs diameters. The solid line corresponds to Gaussian fit.