

Supporting information:

Designing and Fabricating of Double Resonance Substrate with Metallic Nanoparticles-Metallic Grating Coupling System for Highly Intensified Surface-Enhanced Raman Spectroscopy

Ying Zhou,^{a,b} Xuanhua Li,^a Xingang Ren,^c Liangbao Yang,^{a,b} and Jinhuai Liu^a

Gap size distribution

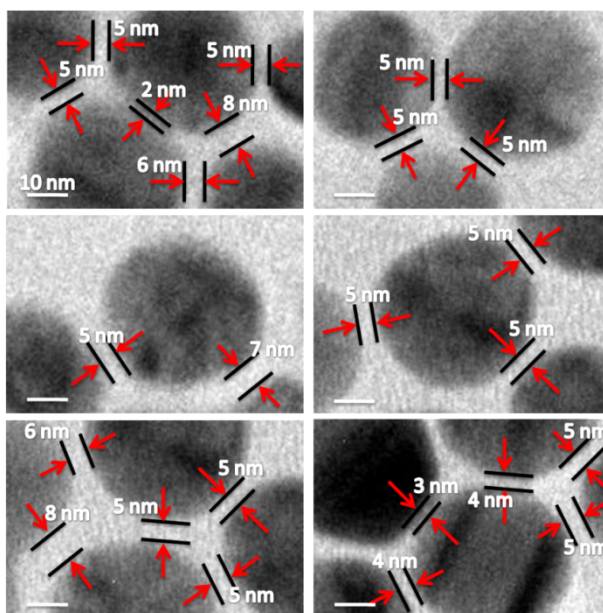


Fig. S1 Typical higher-magnification TEM images and the specific measurements of Au NPs gap distance distribution of interparticle separations.