

Electronic Supplementary Information

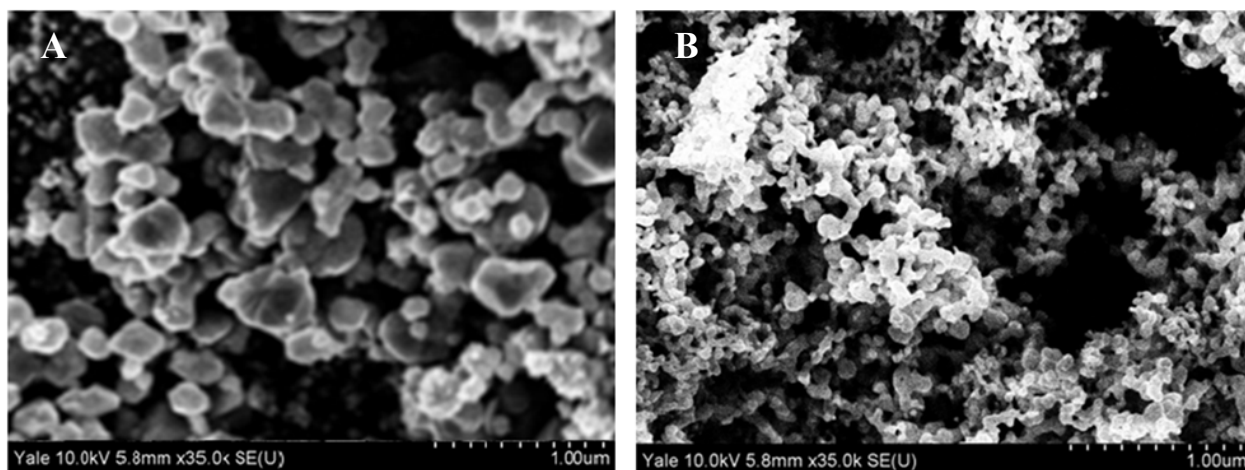


Fig. ES11. Scanning electron micrographs for A) the silver colloid and B) the silver-doped sol-gel.

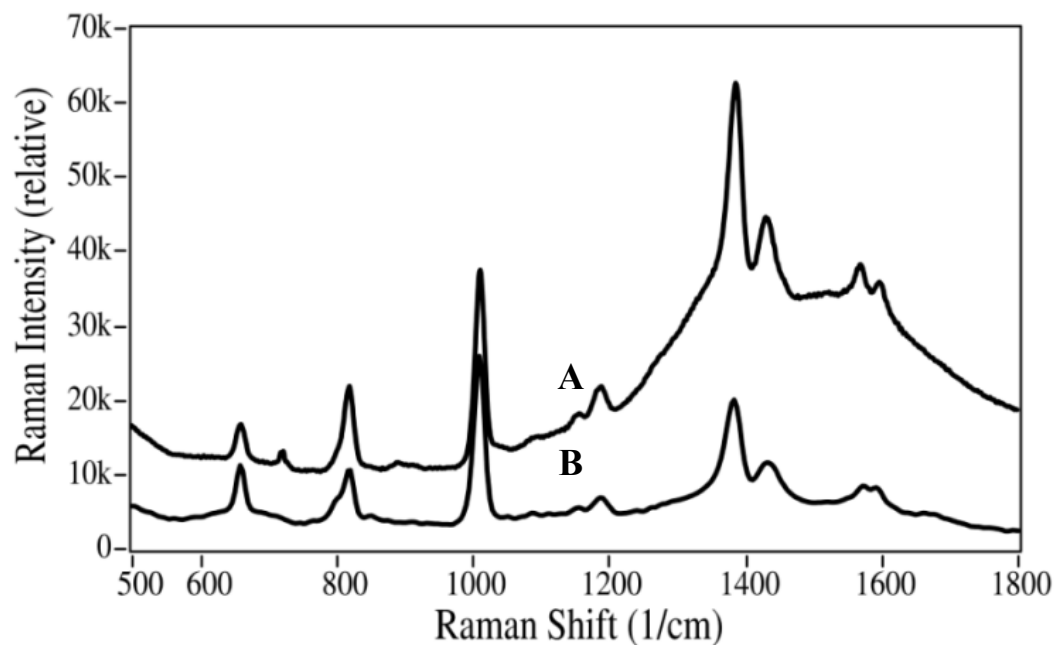


Fig. ES12. SERS of 1 μg/mL dipicolinic acid in water using A) silver colloids and B) silver-doped sol-gels. Spectral conditions: 75 mW of 785 nm laser excitation, ten 10 sec spectra averaged using a dispersive Raman spectrometer.

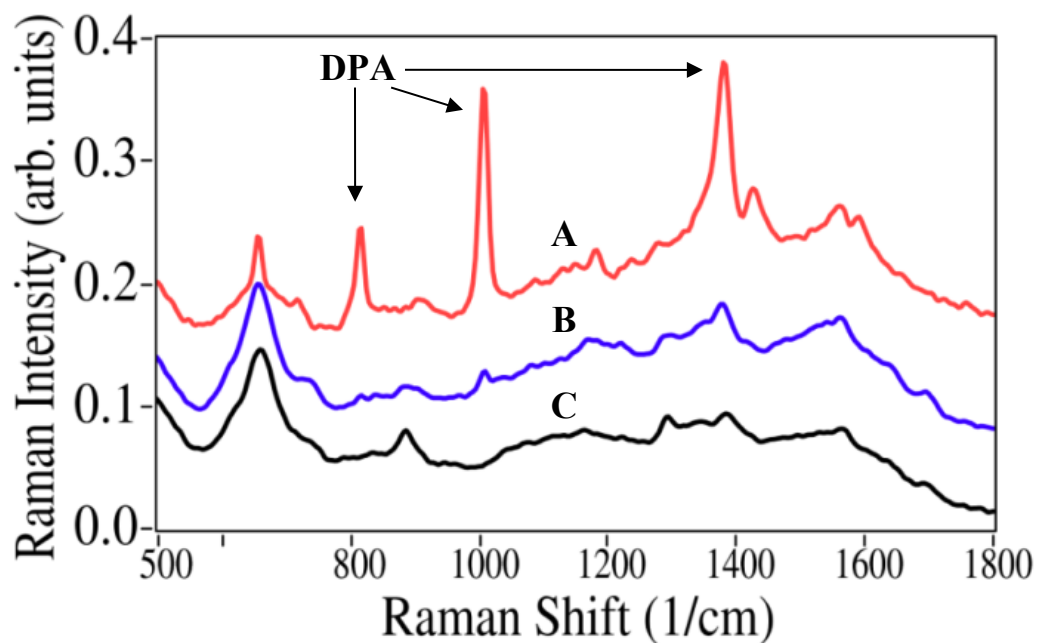


Fig. ESI3. SERS of 100 $\mu\text{g/mL}$ DPA added to SERS-active capillaries treated with A) 5, B) 10, and C) 50 $\mu\text{g/mL}$ peptide. Sample conditions: 0.5 hr peptide reaction time, DPA measured immediately afterwards. Spectral conditions: 75 mW of 785 nm laser excitation, ten 1 min spectra averaged using a Fourier transform Raman spectrometer. Spectra are displayed on same intensity scale, but offset for clarity.