

Supporting Information:

A WS₂ nanosheet-based platform for fluorescent DNA detection via PNA-DNA hybridization

Shuting Wang, Yulin Zhang, Yong Ning, Guo-Jun Zhang

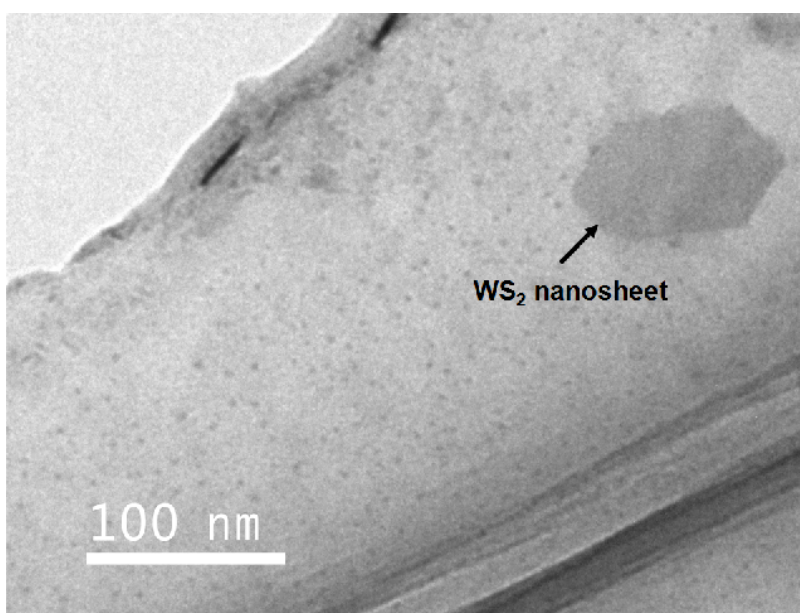


Fig. S1 TEM image of a WS₂ nanosheet.

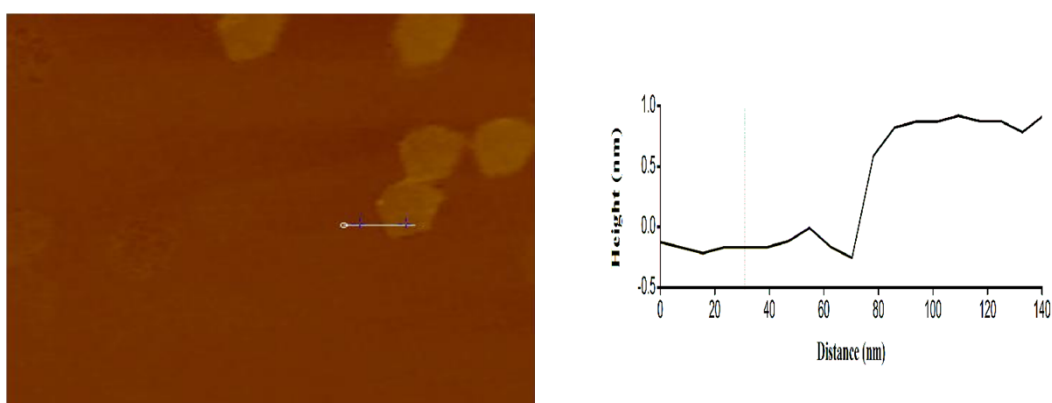


Fig. S2 AFM images showing the morphological feature of the WS₂ nanosheets and height profiles of the nanosheets on silicon substrate.