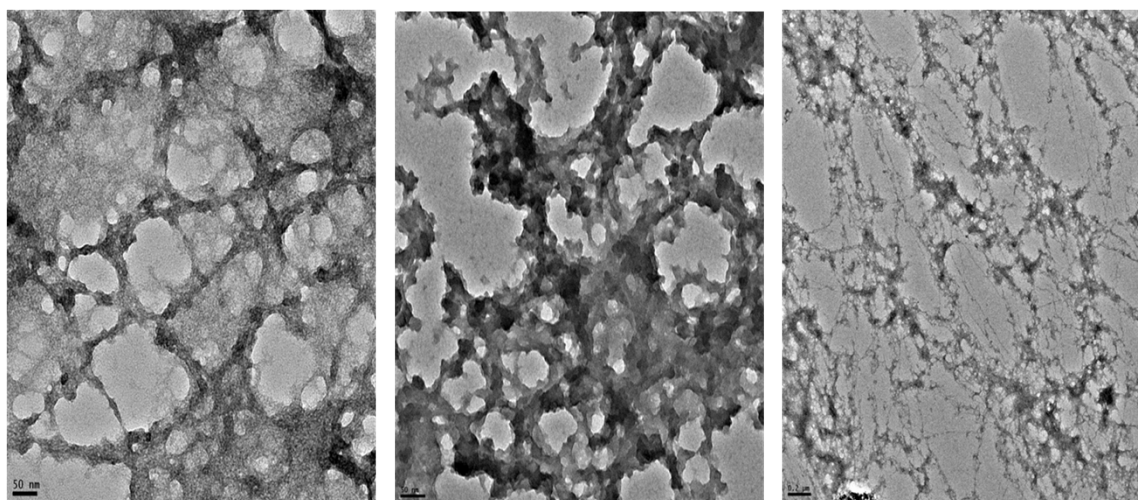


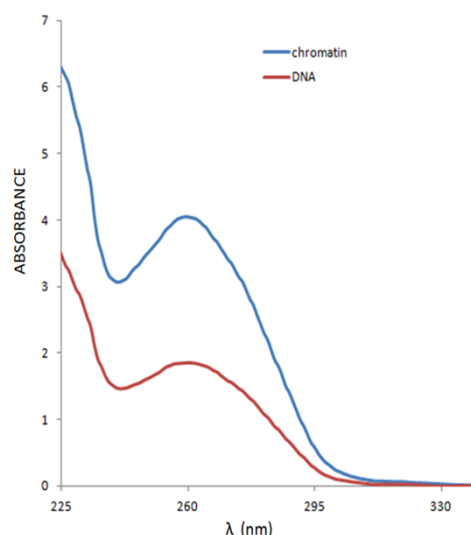
# Supplementary Information

## A native chromatin extraction method based on salicylic acid coated magnetic nanoparticles and characterization of chromatin

Zhongwu Zhou, Joseph Irudayaraj\*

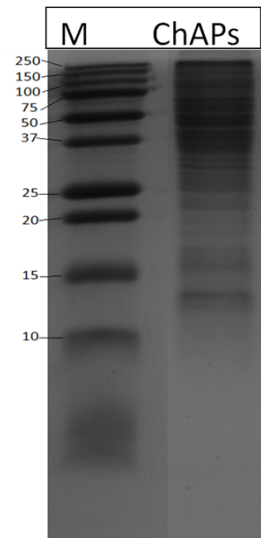


**Supplementary Figure 1.** (A) chromatin extracted by 50 µl of 7.2% SDS; (B) chromatin extracted by 500 µl of 0.72% SDS; (C) DNA extracted by 50 µl of lysing buffer according to Zhou et al (24).



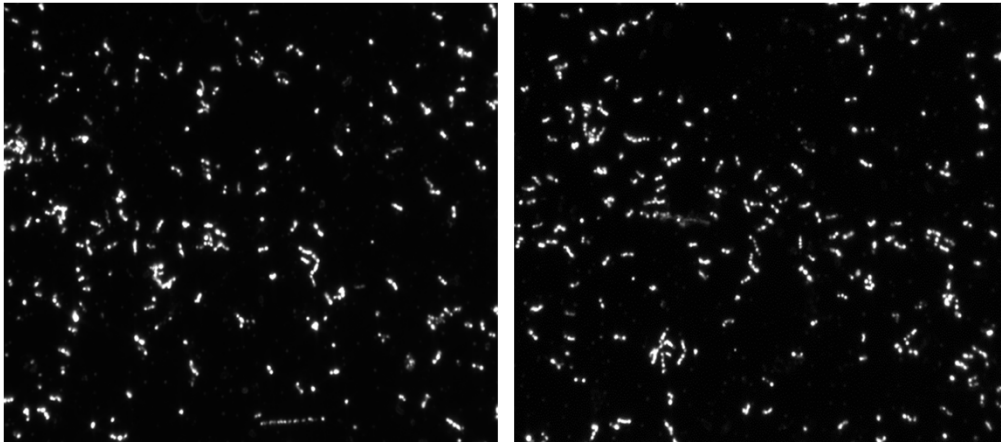
**Supplementary Figure 2.** The absorption spectra of extracted chromatin and the corresponding DNA. DNA was prepared from chromatin by phenol/Chloroform extraction.

1



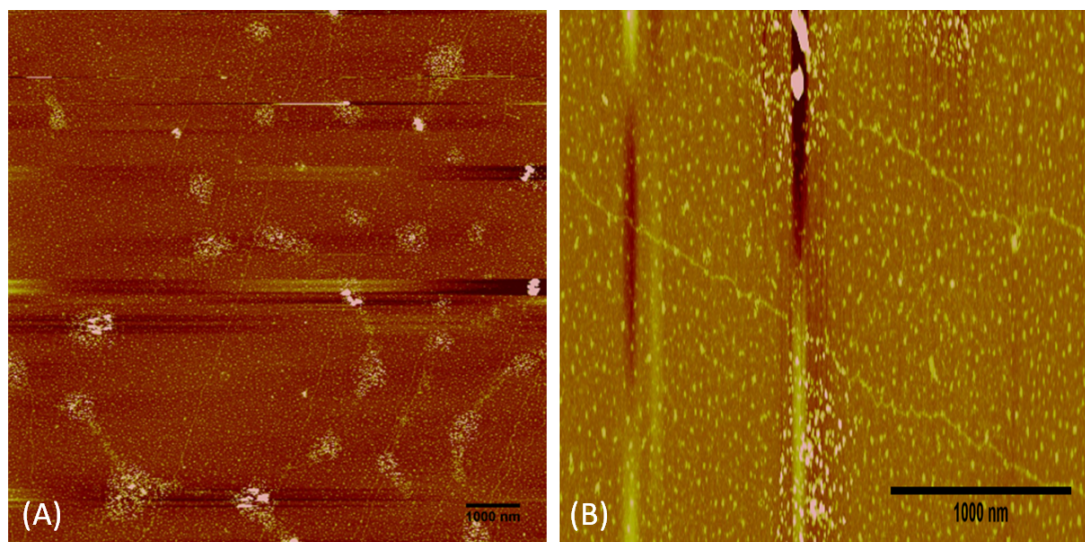
2

3 **Supplementary Figure 3.** 15% SDS-PAGE of chromatin associated proteins (ChAPs), stained  
4 by Coomassie blue.



5

6 **Supplementary Figure 4.** Chromatin observed by dark-field microscopy.



**Supplementary Figure 5.** Long and single chromatin fibers (about 10  $\mu\text{m}$ ) is shown in (A), and a detailed structure in (B). Scale bar are provided in the lower right of each figure by ImageJ.

**Table S1** Antibody information for fluorescence immunostaining and Western blotting analysis.

Antibody	Company	Catalog NO.	Dilution times/application
H4	abcam	ab10158	500/WB
H3K9me3	abcam	ab8898	500/WB
Lamin B	abcam	ab16048	1000/WB
H3	abcam	ab1791	1000/IF
Goat-anti rabbit-Alexa 647	Life technologies	A-21245	1000/IF