

ELECTRONIC SUPPLEMENTARY INFORMATION

SERS-based monitoring of the intracellular pH in endothelial cells: the influence of extracellular environment and tumour necrosis factor- α

Aleksandra Jaworska^{ab}, Lauren Jamieson^c, Kamilla Malek^{ab*}, Colin Campbell^c,
Jaebum Choo^d, Malgorzata Baranska^{ab}, Stefan Chłopicki^{bc}

^aFaculty of Chemistry, Jagiellonian University, 3 Ingardena Str., 30-060 Krakow, Poland. E-mail:
malek@chemia.uj.edu.pl Fax: +48 12634 0515; Tel: +48 12663 2064

^bJagiellonian Center for Experimental Therapeutics (JCET), Jagiellonian University, 14 Bobrzynskiego
Str., 30-348 Krakow, Poland

^cEaStCHEM, School of Chemistry, University of Edinburgh, Edinburgh, EH9 3JJ, UK

^dDepartment of Bionano Engineering, Hanyang University, Sa-1-dong 1271, Ansan 426-791, South
Korea

^eDepartment of Experimental Pharmacology, Jagiellonian University Medical College, Grzegorzeczka 16,
31-531 Krakow, Poland

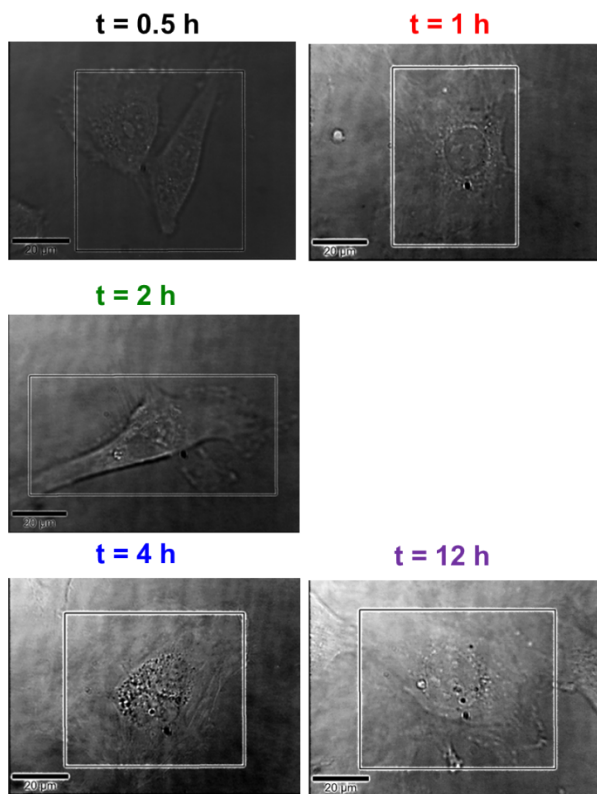


Figure S1. Optical images of EA.hy926 cells for SERS maps displayed in Figure 2.

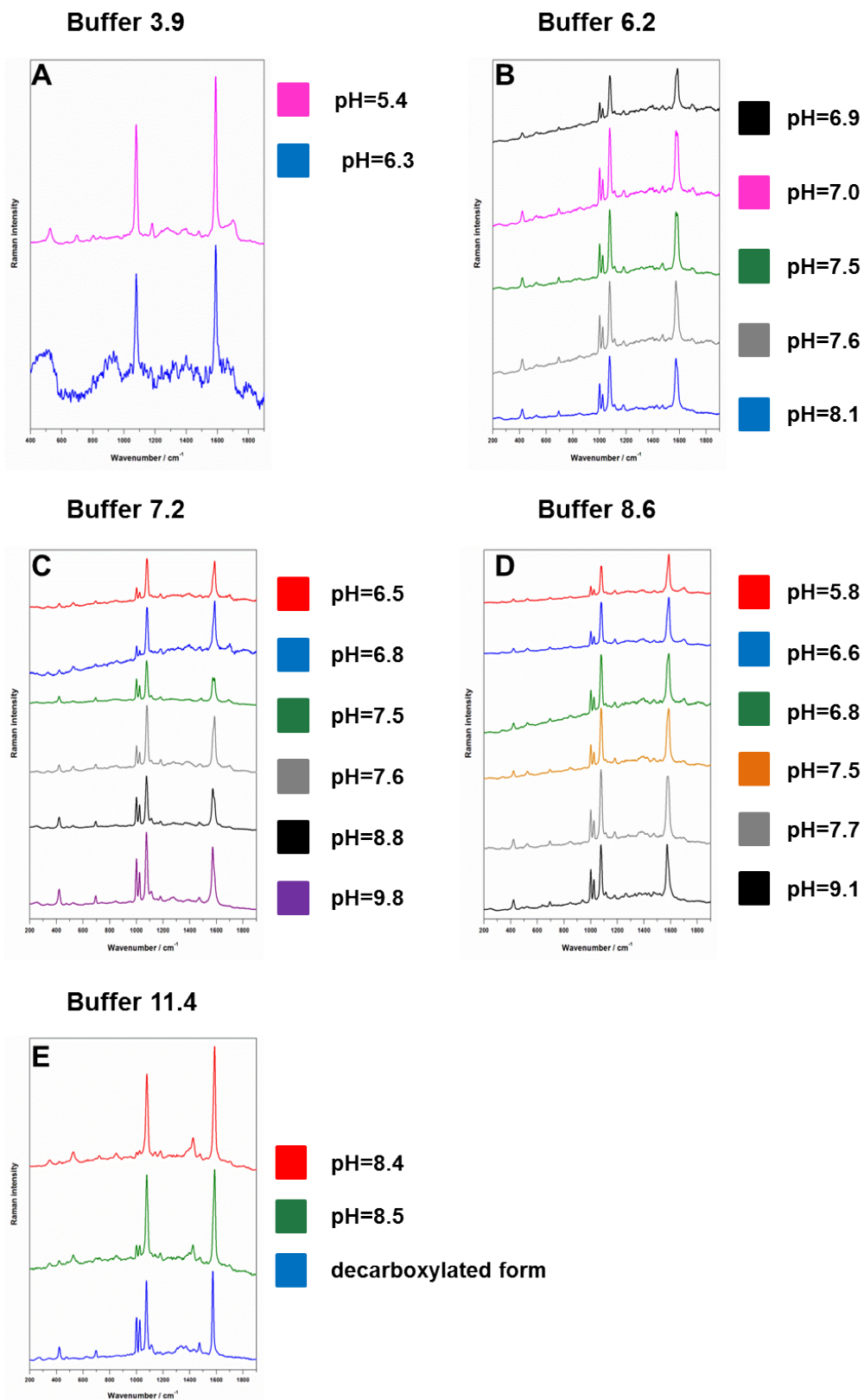


Figure S2. Mean SERS spectra from the cluster maps displayed in Figure 3. The colours of spectra correspond to pH values calculated from the Equation 1.