

Rapid identification of goblet cells in unstained colon thin sections by means of quantum cascade laser-based infrared microspectroscopy

N. Kröger-Lui,^{*a} N. Gretz,^b K. Haase,^a B. Kränzlin,^b S. Neudecker,^b A. Pucci,^a A. Regenscheit,^a A. Schönhals^a and W. Petrich^{a,‡}

^a Heidelberg University, Kirchhoff Institute for Physics, Im Neuenheimer Feld 227, Heidelberg, 69120 Germany

^b Heidelberg University, Medical Faculty Mannheim, Medical Research Center, Theodor-Kutzer-Ufer 1-3, Mannheim, 68167 Germany

[‡] Next to his affiliation with the Kirchhoff-Institute for Physics, W. Petrich is an employee of Roche Diagnostics GmbH, Germany.

Electronic Supplementary Information

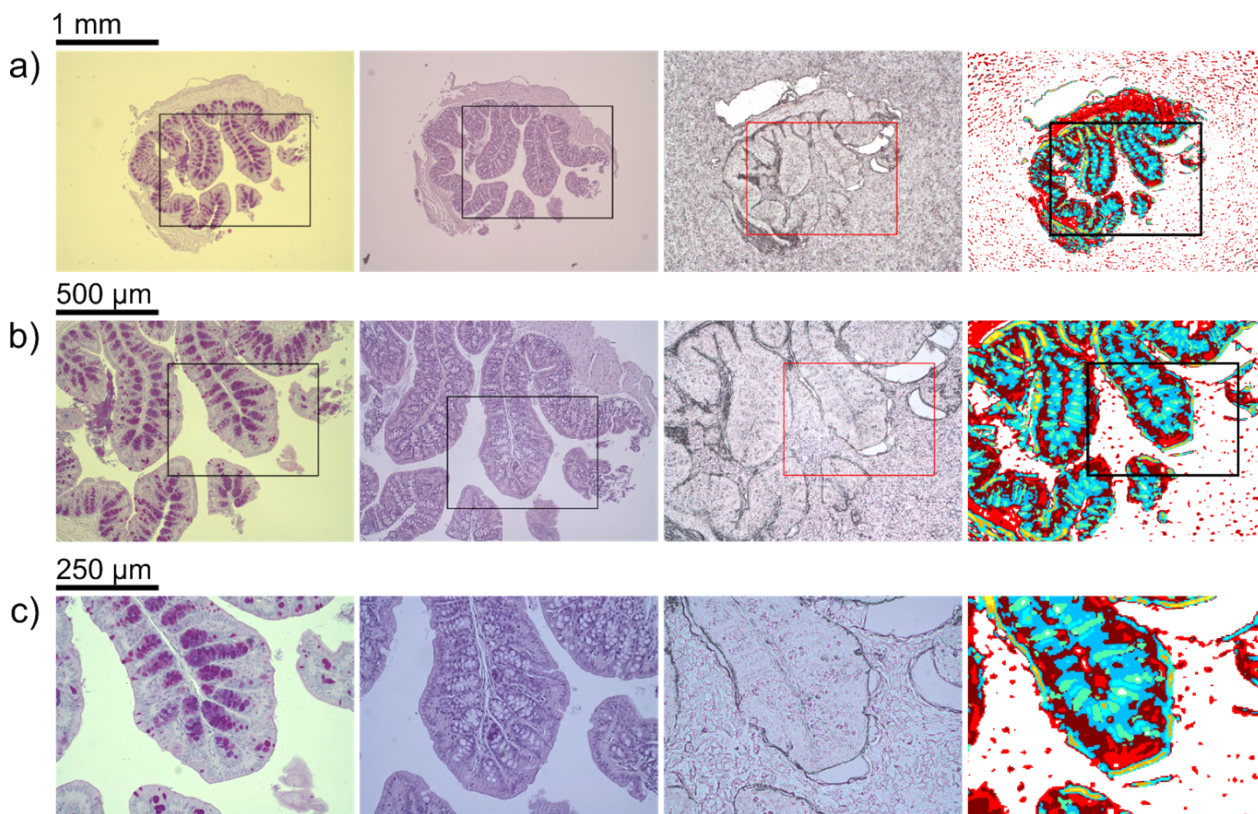


Fig. S1 (a)-(c) Microscopic image of an Alcian blue and PAS stained colon tissue slice, a H&E stained colon tissue slice, an unstained colon tissue slices, and label images obtained via random decision forest classification of infrared data (from left to right). For the images of H&E stained and unstained slices, the images (a)-(c) represent optical zoom steps, with the magnified area highlighted by a box. The corresponding series of label images results from a digital zoom.

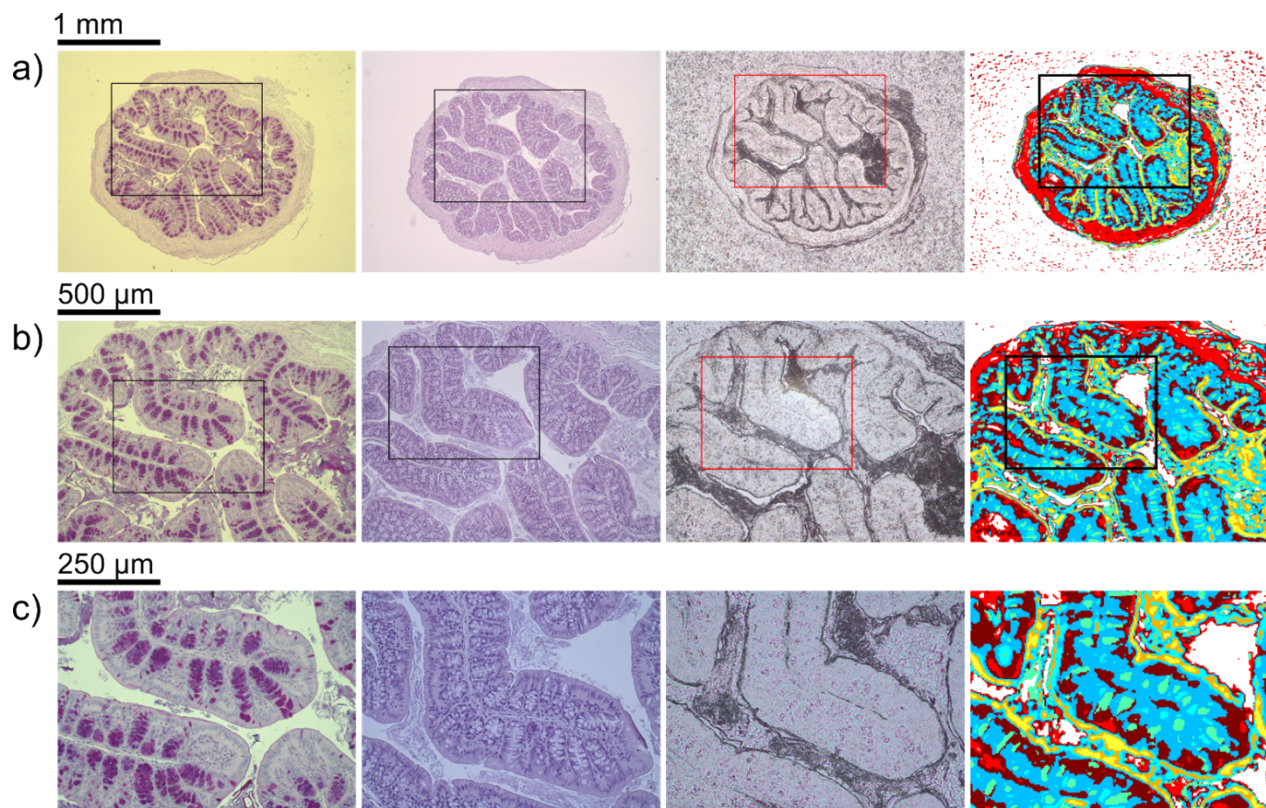


Fig. S2 (a)-(c) Microscopic image of an Alcian blue and PAS stained colon tissue slice, a H&E stained colon tissue slice, an unstained colon tissue slices, and label images obtained via random decision forest classification of infrared data (from left to right). For the images of H&E stained and unstained slices, the images (a)-(c) represent optical zoom steps, with the magnified area highlighted by a box. The corresponding series of label images results from a digital zoom.

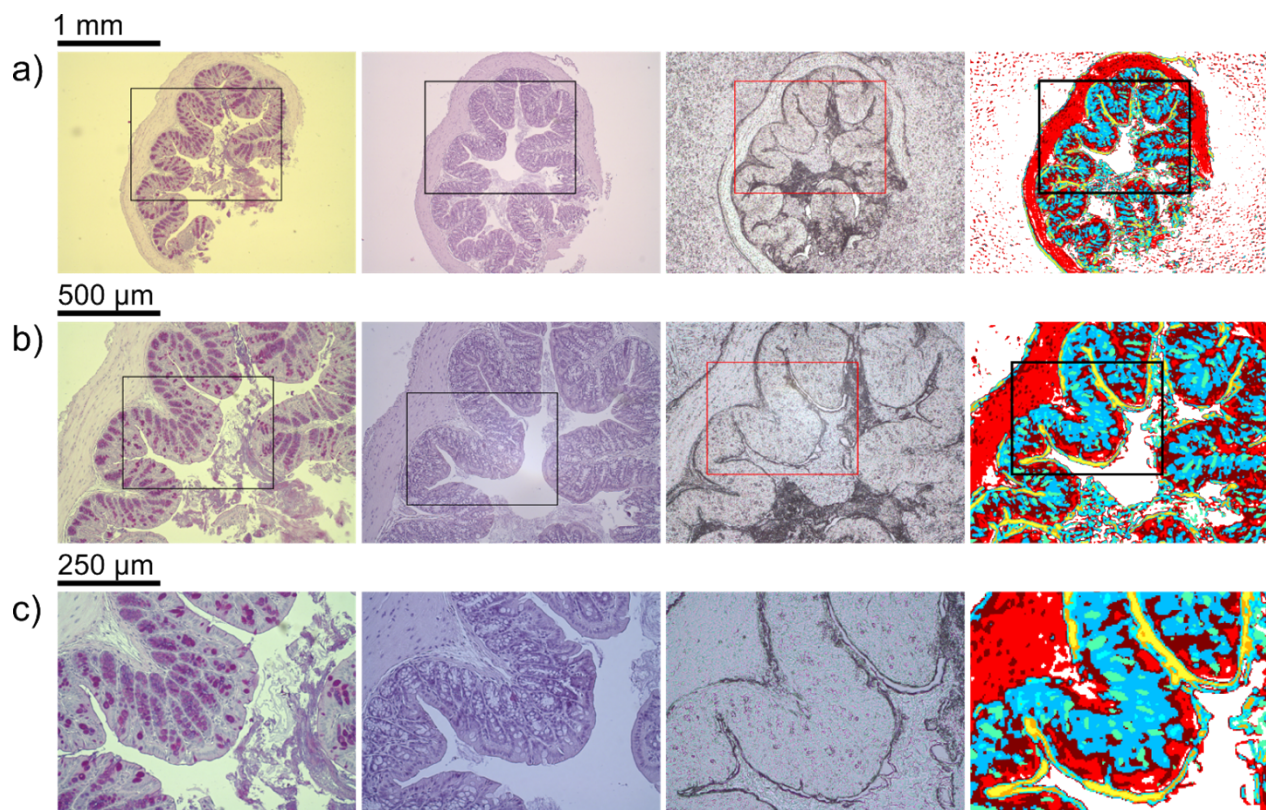


Fig. S3 (a)-(c) Microscopic image of an Alcian blue and PAS stained colon tissue slice, a H&E stained colon tissue slice, an unstained colon tissue slices, and label images obtained via random decision forest classification of infrared data (from left to right). For the images of H&E stained and unstained slices, the images (a)-(c) represent optical zoom steps, with the magnified area highlighted by a box. The corresponding series of label images results from a digital zoom.

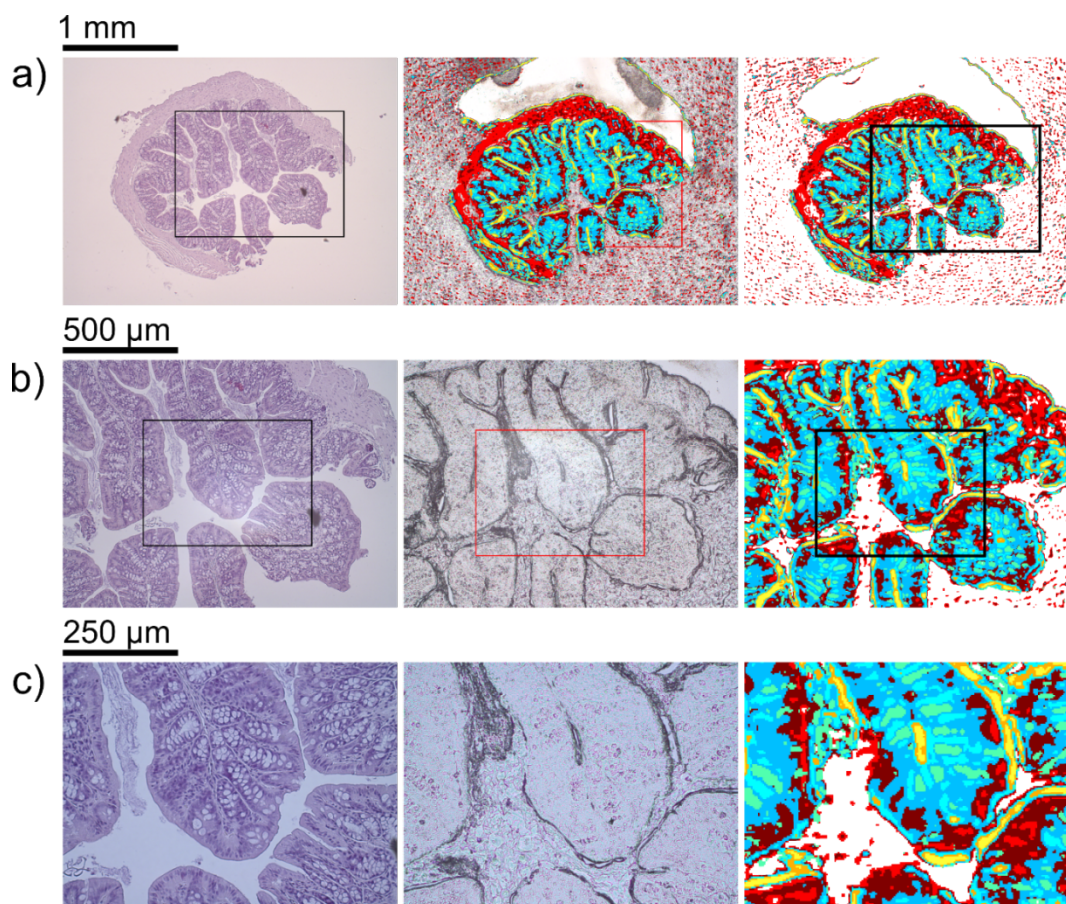


Fig. S4 (a)-(c) Microscopic image of a H&E stained colon tissue slice (left column), an unstained colon tissue slices (central column), and label images obtained via random decision forest classification of infrared data (right column). For the images of H&E stained and unstained slices, the images (a)-(c) represent optical zoom steps, with the magnified area highlighted by a box. The corresponding series of label images results from a digital zoom. Note that no Alcian blue and PAS stained adjacent tissue slice was available for this tissue section.