

Supplementary Material (ESI) for Analytical Methods

This journal is © The Royal Society of Chemistry 2010

Surface micropatterning technique for surface-enhanced Raman scattering analysis

Weidong Ruan,^{ab} Zhicheng Lu,^b Tieli Zhou,^b Bing Zhao*^b and Li Niu*^a

^a*Engineering Laboratory for Modern Analytical Techniques, ^w/_o State Key Laboratory of Electroanalytical Chemistry, Changchun Institute of Applied Chemistry, Changchun 130022, P. R. China. E-mail: lniu@ciac.jl.cn; Fax: +86 431 85262800; Tel: +86 431 85262425*

^b*State Key Laboratory of Supramolecular Structure and Materials, Jilin University, Changchun 130012, P. R. China. E-mail: zhaobing@mail.jlu.edu.cn*

Electronic supplementary information (ESI):

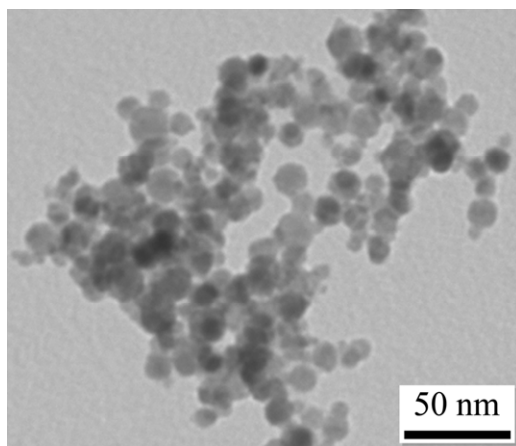


Fig. S1. TEM image of Ag nanoparticles with an average diameter of 12 nm.