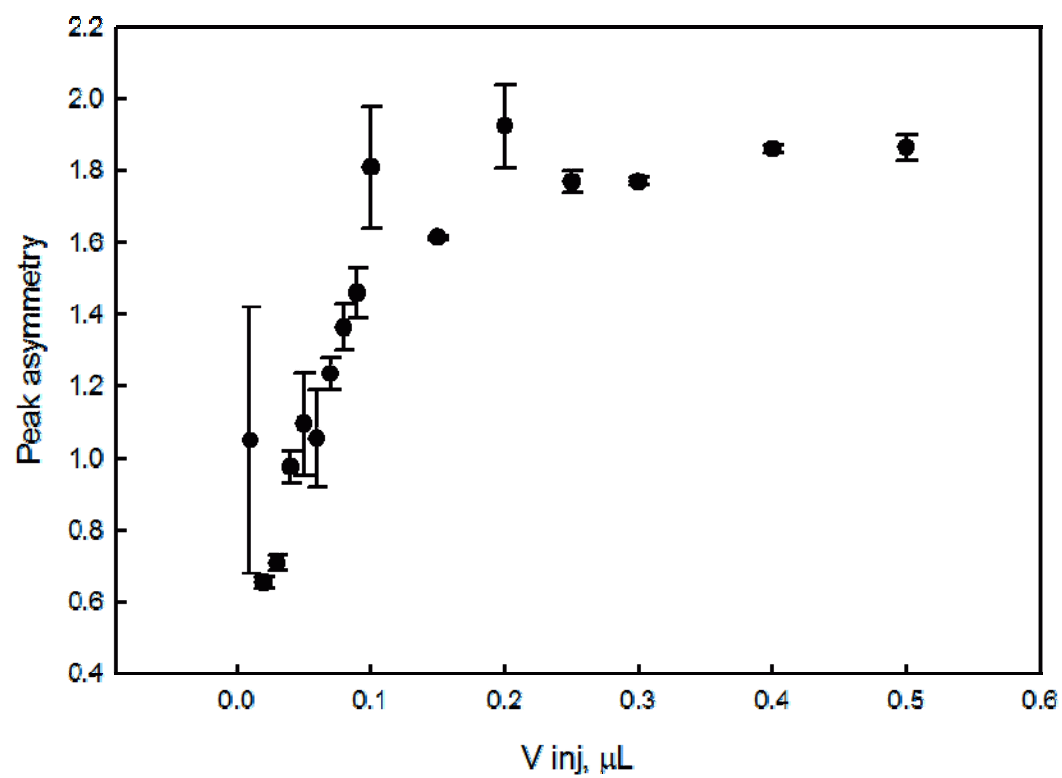


ESI Figure S1. The dependence of peak asymmetry of the volume of the sample injected (n=3 injections).



**ESI Figure S2.** The effect of eluent pH and concentration of TFA on the separation of proteins: 1 - ribonuclease, 2 - insulin, 3 - cytochrome C, 4 - horseradish peroxidase, 5 - carbonic anhydrase, 6 - enolase, 7 - alcohol dehydrogenase and 8 - phosphorylase. Column: diol-functionalised PLOT (510 x 0.05 mm I.D.) Gradient conditions as in Fig. 4., TFA concentrations (a) 0.01%, pH 3.4, (b) 0.05%, pH 2.8, (c) 0.1%, pH 2.6, (d) 0.15%, pH 2.2, (e) 0.2%, pH 1.9. F = 0.4  $\mu$ L/min, P = 1 atm. UV detection at 210 nm.

