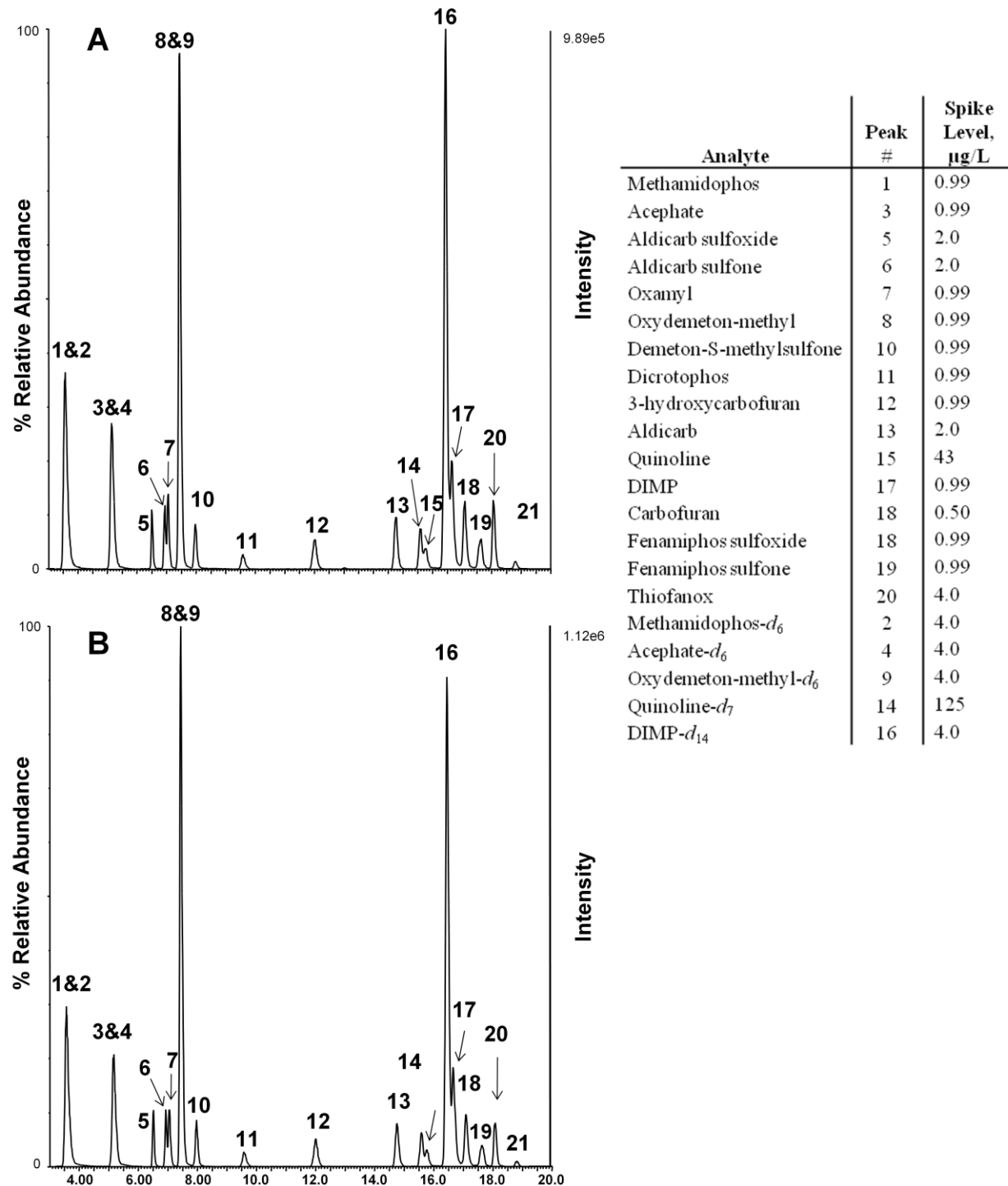


Supplementary Information for *Development and Multi-laboratory Verification of U.S. EPA Method 538 for the Analysis of Drinking Water Contaminants by Direct Aqueous Injection-LC/MS/MS*



**Figure S1:** Chromatograms of A) deionized water fortified with 8.7 mg/L TOC using natural organic material and with method analytes and B) deionized water fortified with the method analytes. The MS/MS precursor-product ion mass traces were overlaid to create the chromatograms.