

Fig. S1. Effect of deposition potential on the stripping peak of Cd and Pb on BFE. Final concentration of Cd and Pb in the test solution were $30 \mu\text{gL}^{-1}$ and $40 \mu\text{gL}^{-1}$ respectively.

Fig. S2. Effect of deposition potential on the stripping peak of Cd and Pb on NCBFE (case-1). Final concentration of Cd and Pb in the test solution were $30 \mu\text{gL}^{-1}$ and $40 \mu\text{gL}^{-1}$ respectively.

Fig. S3. Effect of deposition potential on the stripping peak of Cd and Pb on NCBFE (case-2). Final concentration of Cd and Pb in the test solution were $30 \mu\text{gL}^{-1}$ and $40 \mu\text{gL}^{-1}$ respectively.

Fig. S4. Effect of deposition potential on the stripping peak of Cd and Pb on CNTMBFE. Final concentration of Cd and Pb in the test solution were $30 \mu\text{gL}^{-1}$ and $40 \mu\text{gL}^{-1}$ respectively.

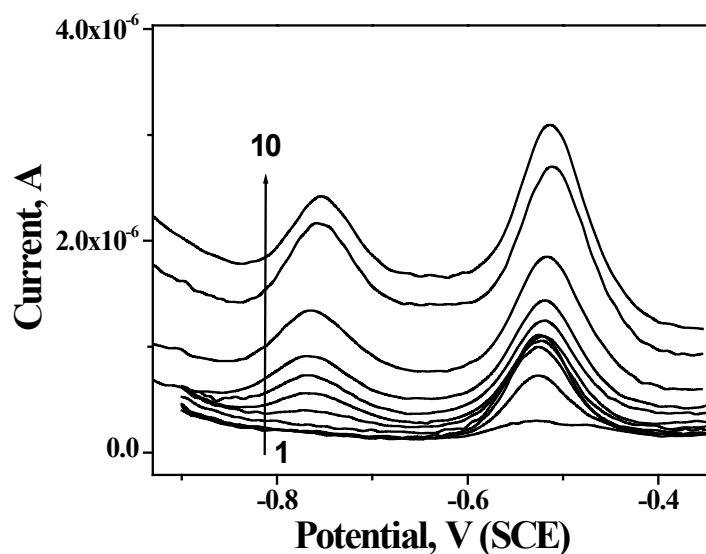


Fig. S1.

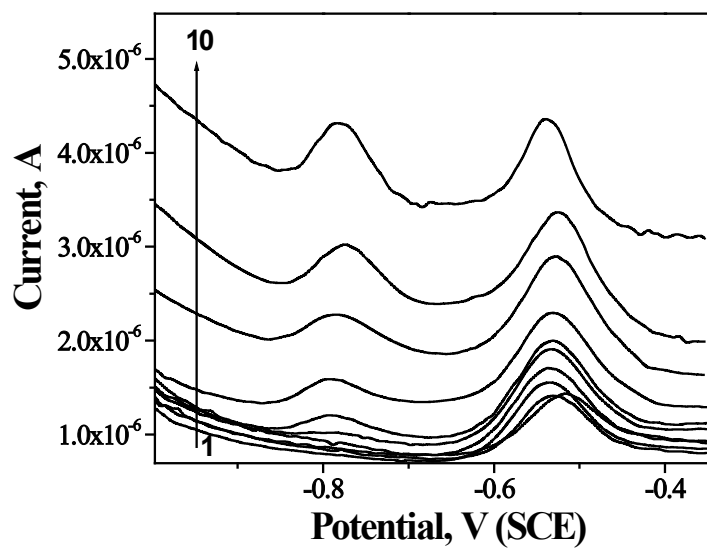


Fig. S2.

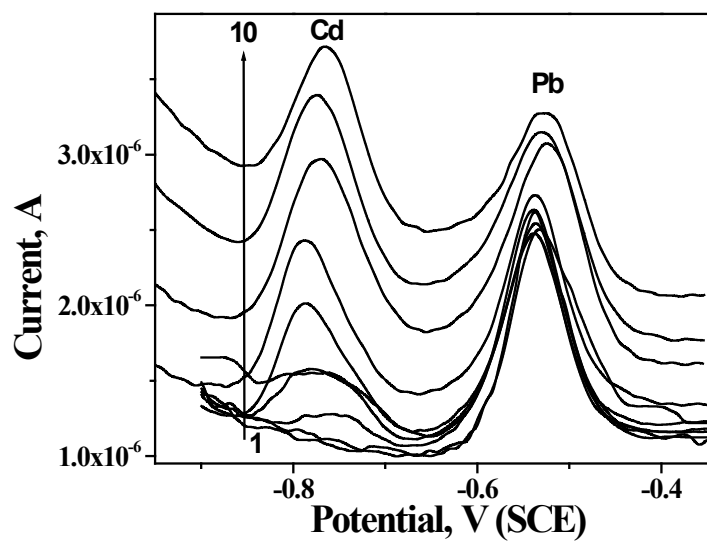


Fig. S3.

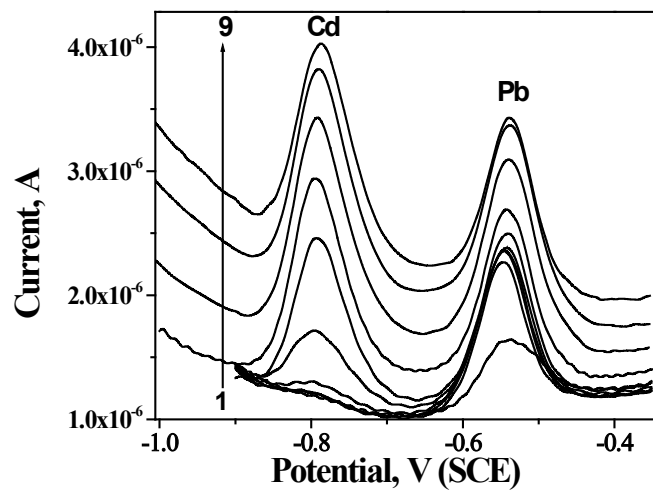


Fig.S4