

Figure ESI S1 : Effect of reaction time and temperature on sialic acid derivatisation.

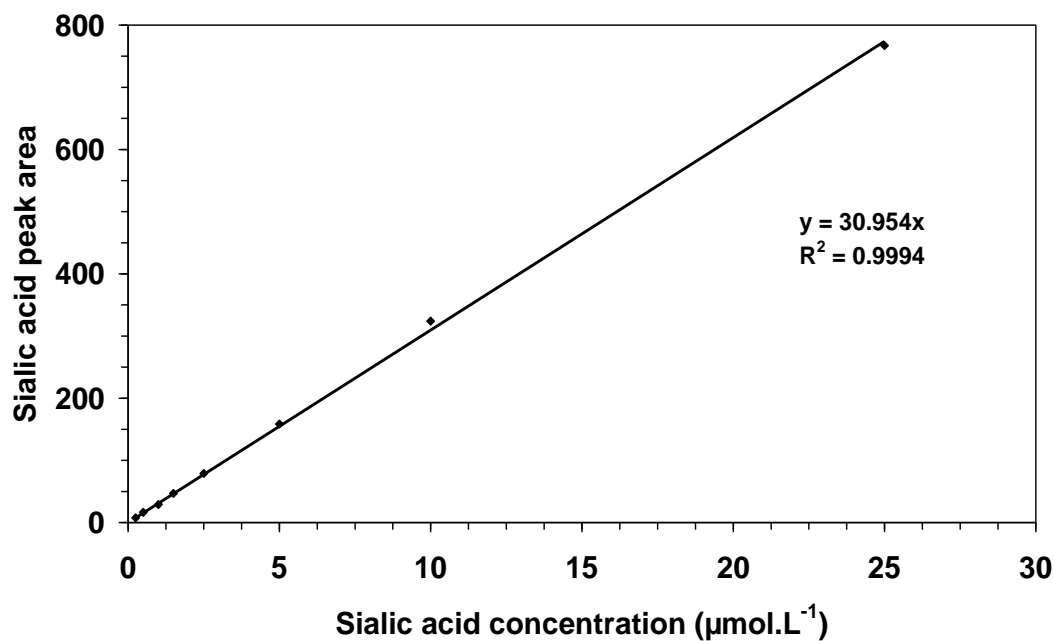


Figure ESI S2: Linearity response of derivatised sialic acid standards.

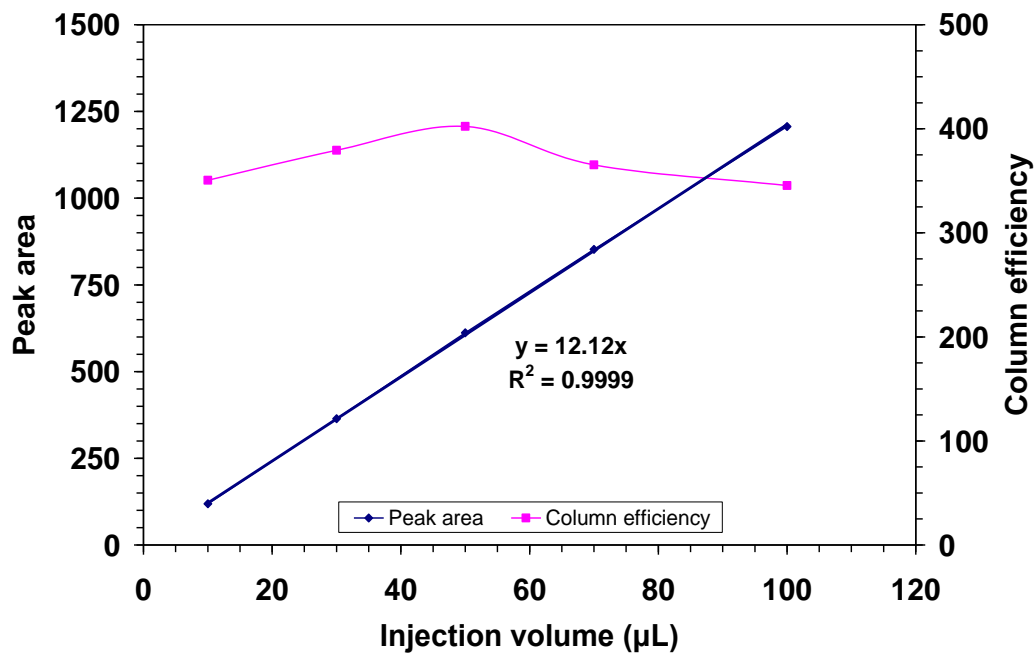


Figure ESI S3: Linearity response of sample injection volume of sialic acid.

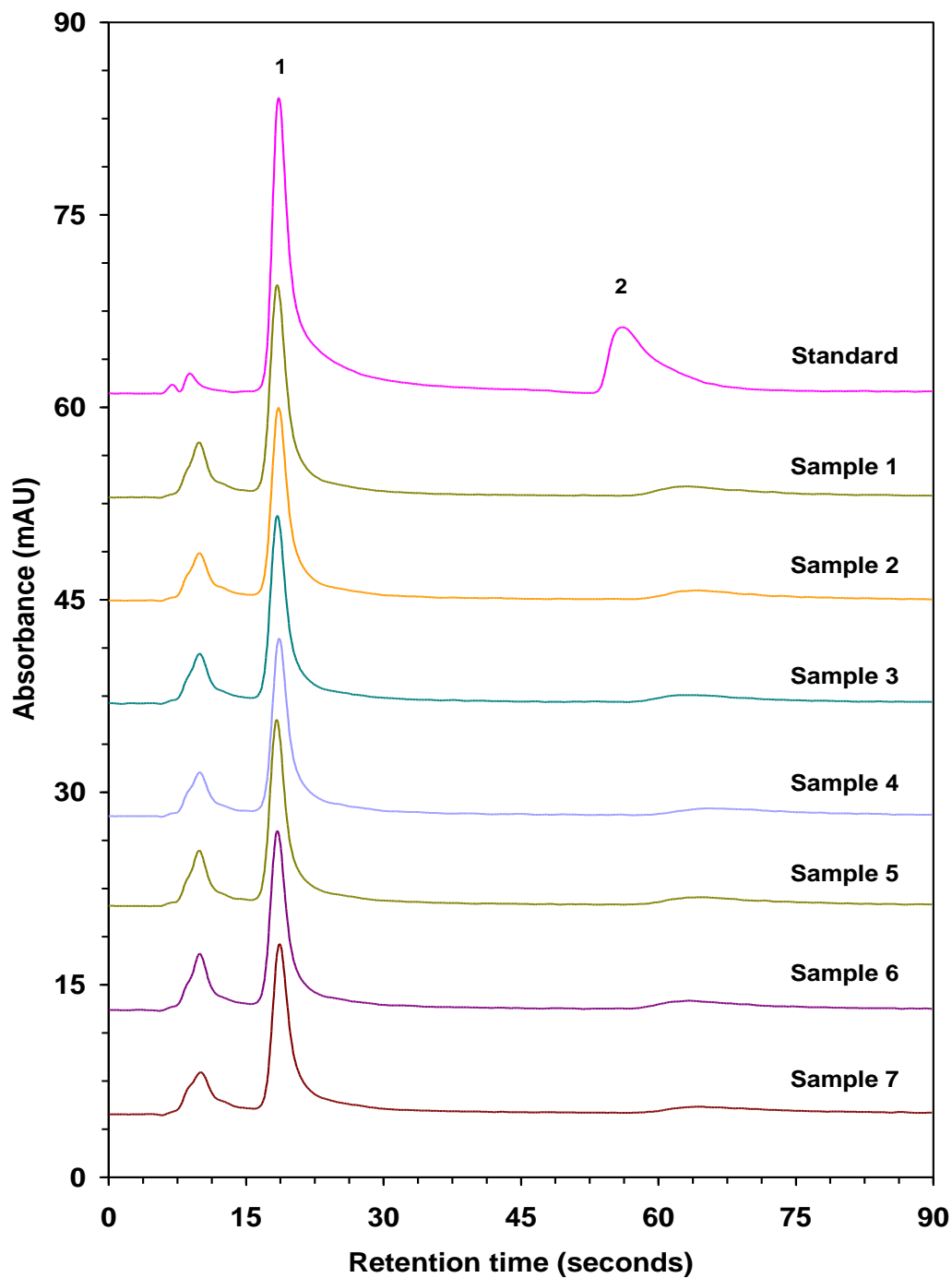


Figure ESI S4: HPLC chromatograms obtained from the analysis of the yeastolate samples overlaid with a sialic acid standard. Chromatographic conditions are as described in Figure 4.5. Peaks: (1) sialic acid, (2) 2-deoxy-D-ribose.

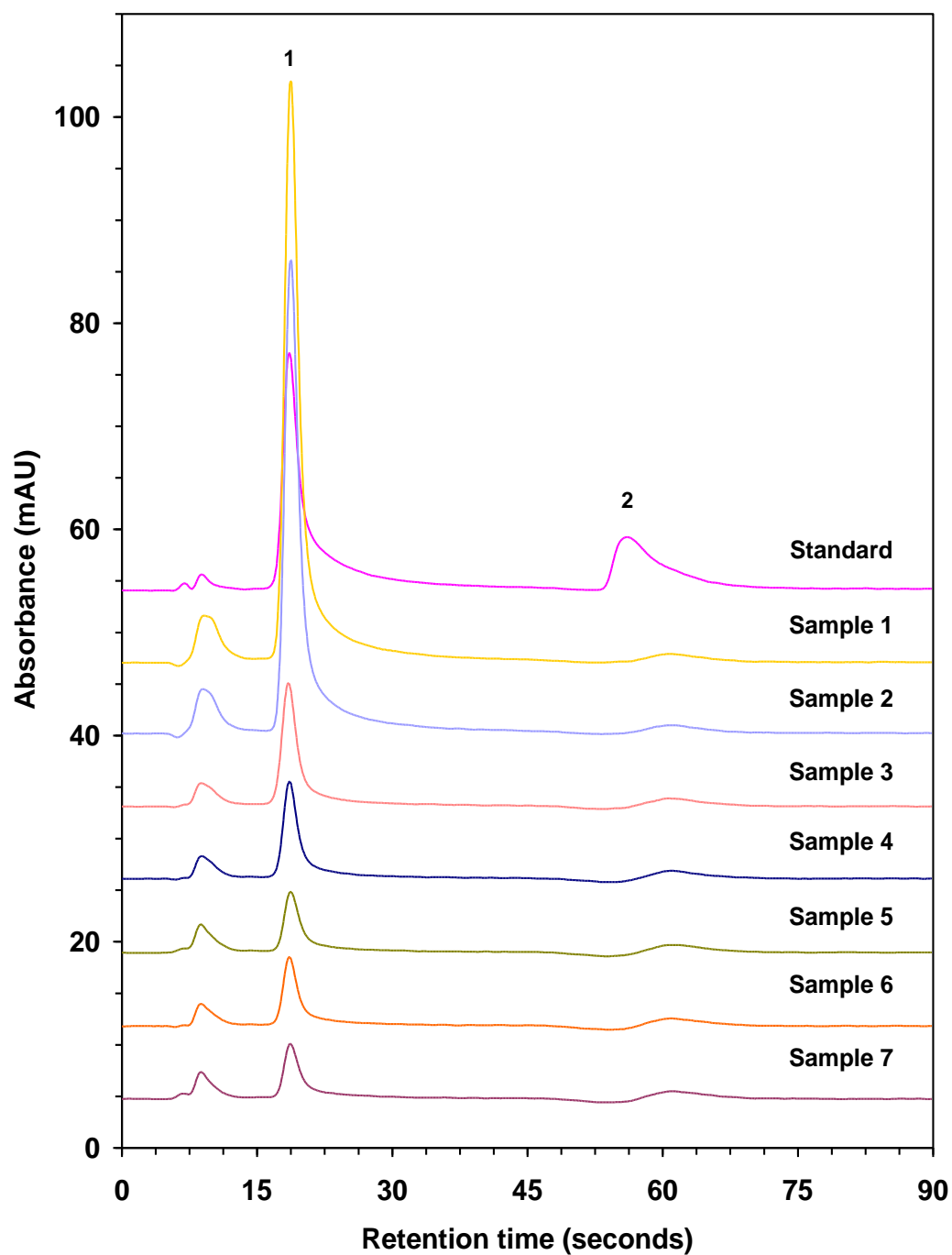


Figure ESI S5: Selected HPLC chromatograms obtained from the analysis of the in-process samples overlaid with a sialic acid standard. Chromatographic conditions are as described in Figure 4.5. Peaks: (1) sialic acid, (2) 2-deoxy-D-ribose.