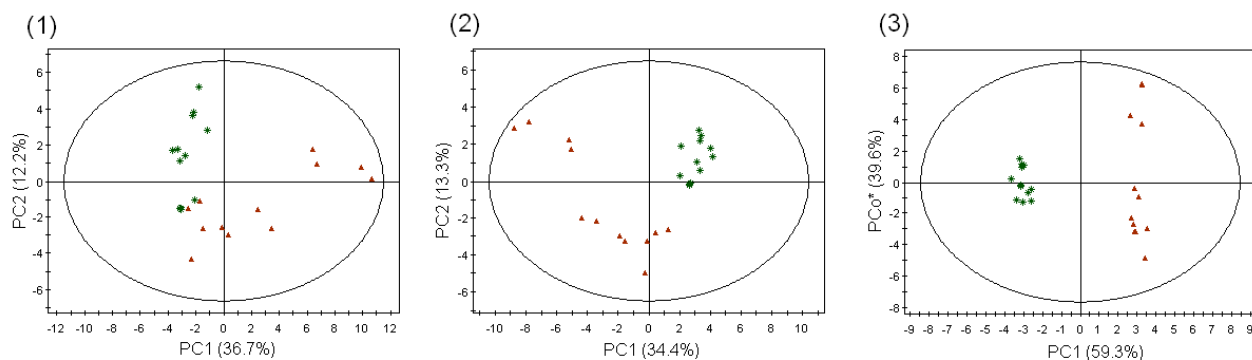
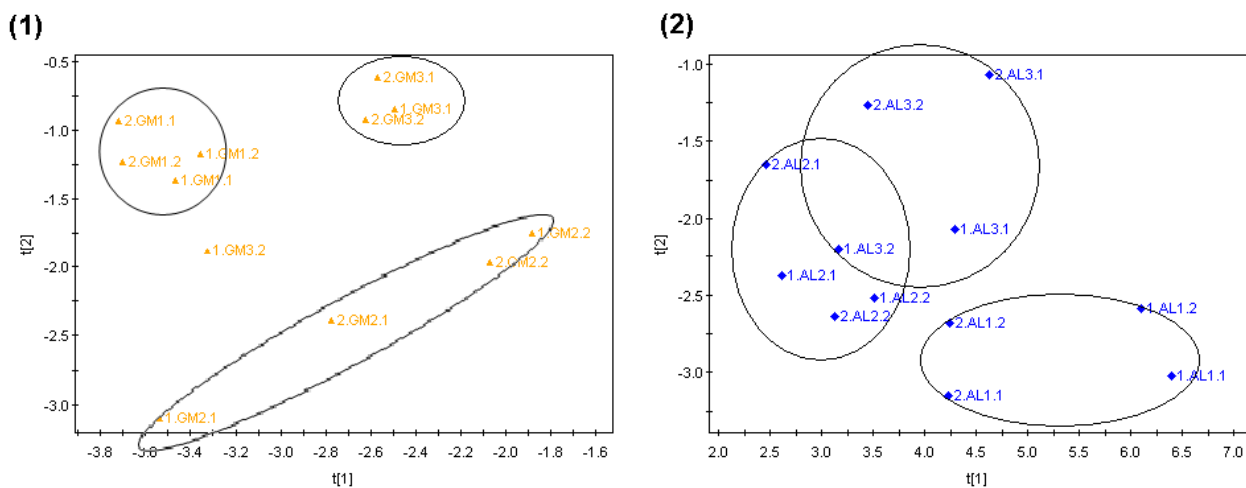


Supplementary Information



S.I. Fig. 1: 2D-score plots of *Gentiana* samples only (*G. rigescens* and *G. macrophylla*). (1) PCA, (2) PLS-DA and (3) O-PLS-DA. (★ GR; ▲ GM)



S.I. Fig. 2: PLS-DA 2D-score plot showing the discrimination of three sample sources clustering in 2 different herbal samples: (1) *Gentiana macrophylla* and (2) *Atractylodes lancea*.