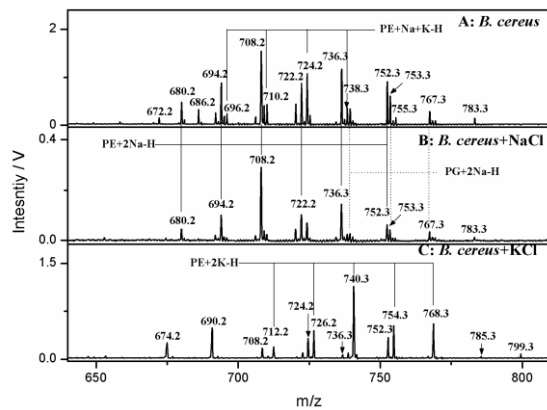


22 **Supplementary material**

23



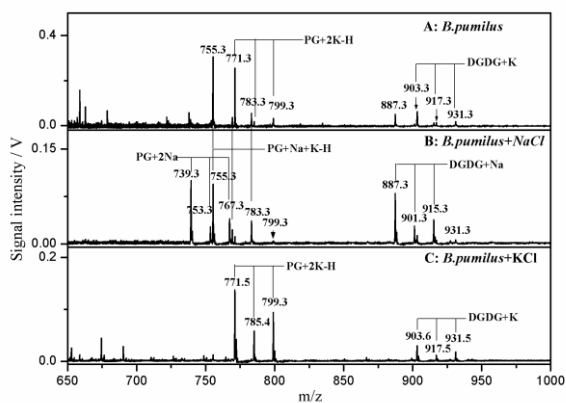
24

25 **Figure S1.** MALDI-TOF mass spectra of *B. cereus* lipids from the raw extract (A) and those doped with 10 mM NaCl (B) and

26 KCl (C).

27

28



29

30 **Figure S2.** MALDI-TOF mass spectra of *B. pumilus* lipids from the raw extract (A) and those doped with 10 mM NaCl (B) and

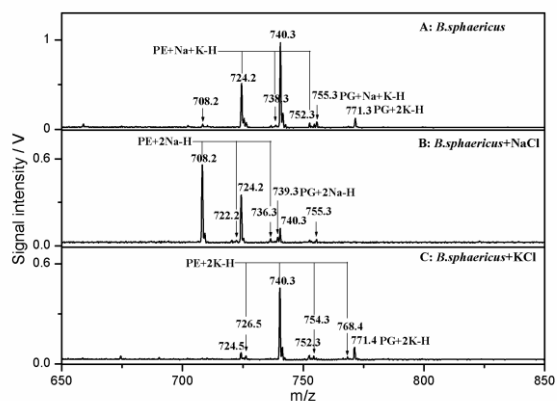
31 KCl (C).

32

33

34

35

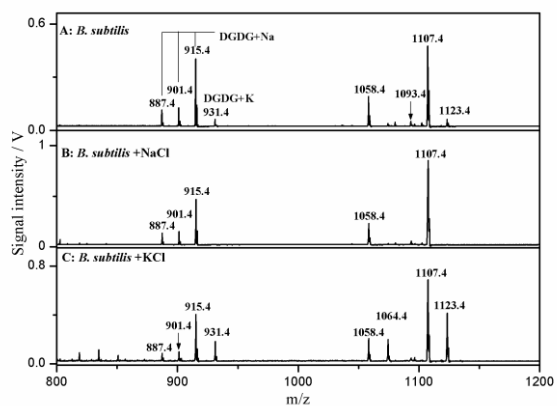


36

37 **Figure S3.** MALDI-TOF mass spectra of *B. sphaericus* lipids from the raw extract (A) and those doped with 10 mM NaCl (B)

38 and KCl (C).

39

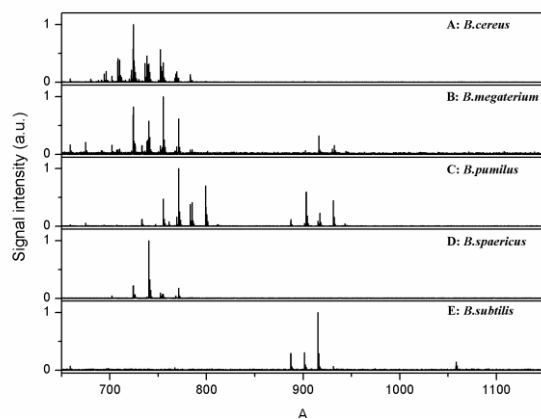


40

41 **Figure S4.** MALDI-TOF mass spectra of *B. subtilis* lipids from the raw extract (A) and those doped with 10 mM NaCl (B) and

42 KCl (C).

43



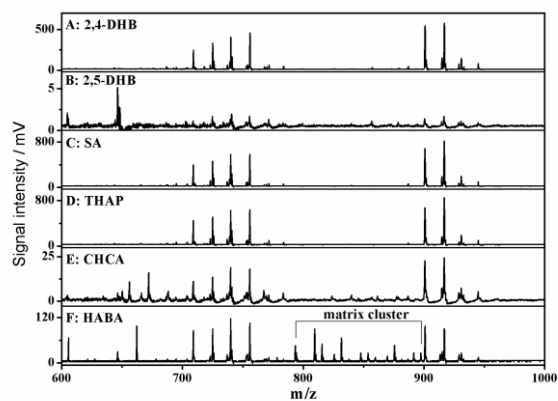
44

45 **Figure S5.** The representative MALDI-TOF mass spectra of five different *Bacillus* species obtained with Autoflex III

46 MALDI-TOF-MS: *B. subtilis* (A), *B. sphaericus* (B), *B. pumilus* (C), *B. megaterium* (D), and *B. cereus* (E).

47

48



49

50 **Figure S6.** MALDI-TOF mass spectra of *B. megaterium* lipid extracts added with 20 mM 2,4-DHB (A), 2,5-DHB (B), SA (C),

51 THAP (D), CHCA (E), and HABA (F), respectively.