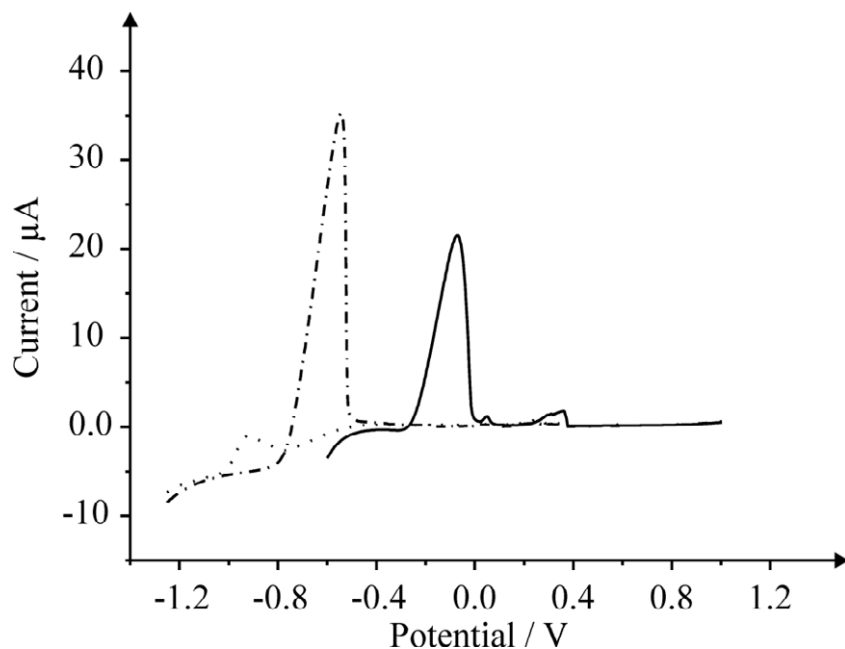


Electronic Supplementary Information

Electroanalytical sensing of selenium(IV) utilising screen printed graphite macro electrodes

Athanasios V. Kolloiopoulos, Jonathan P. Metters and Craig E. Banks*

DOI: 10.1039/c2ay26041g



ESI Figure 1

Linear sweep voltammetric traces of a SPGE for 4 mg L⁻¹ copper (solid line), cadmium (dotted line) and lead (dash-dot lined) in to 0.1 mol L⁻¹ HClO₄. Deposition potential: -0.6 V; deposition time 300 seconds. Scan rate: 50 mVs⁻¹.