

Supplemental Materials

Performance of a Microfluidic Device for *In Situ* ToF-SIMS Analysis of Selected Organic Molecules at Aqueous Surfaces

Li Yang,¹ Zihua Zhu,^{2*} Xiao-Ying Yu,^{3*} Theva Thevuthasanand², James P. Cowin^{1,4}

1. Chemical and Materials Sciences Division, Pacific Northwest National Laboratory, Richland, WA 99354

2. W. R. Wiley Environmental Molecular Science Laboratory, Pacific Northwest National Laboratory, Richland, WA 99354

3. Atmospheric Sciences and Global Climate Change Division, Pacific Northwest National Laboratory, Richland, WA 99354

4. Cowin In-Situ Science, L. L. C., Richland, WA 99354 (currently)

* Email: zihua.zhu@pnnl.gov; Phone: 1-509-371-6240; Fax: 1-509-371-7866

* Email: xiaoying.yu@pnnl.gov; Phone: 1-509-372-4524; Fax: 1-509-372-6168

Supplemental Materials

Figure S-1 illustrates the supported experimental data and linear least-squares fit to determine the detection limit for glycerol solutions.

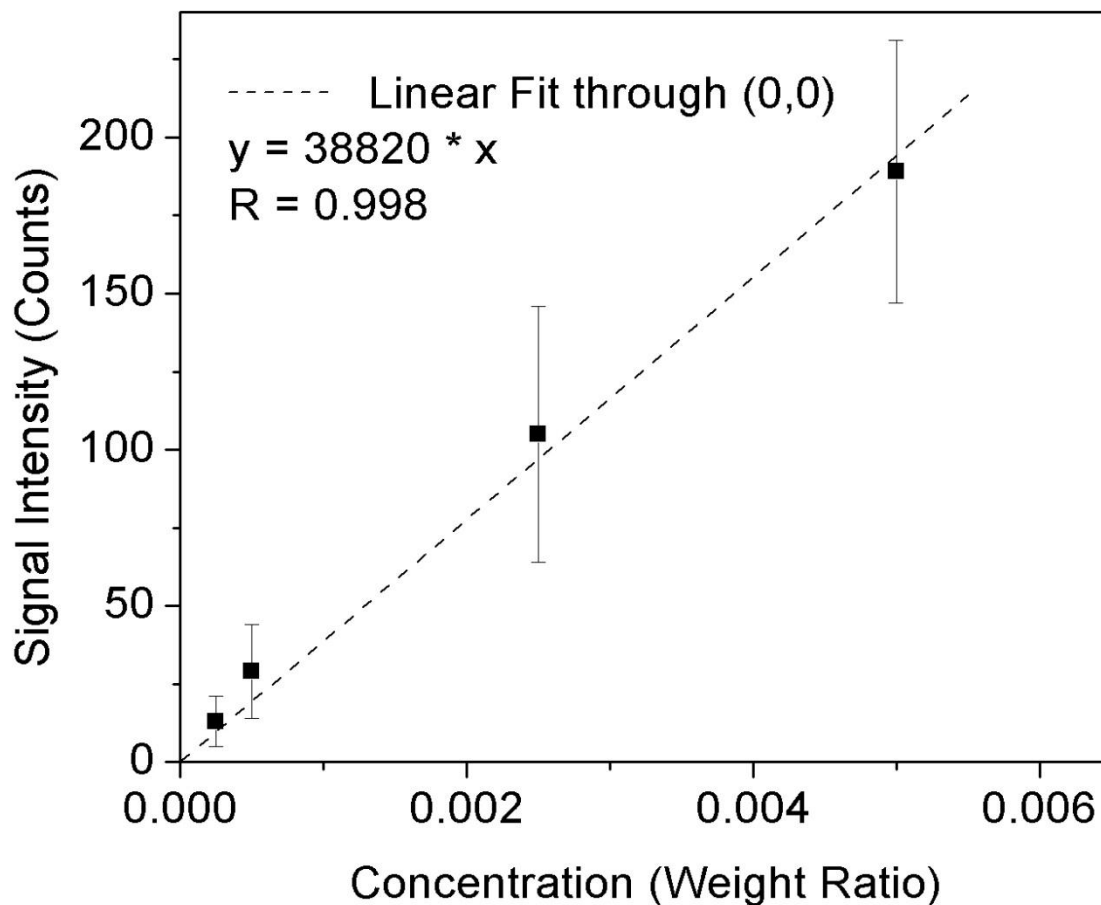


Figure S-1: The relationship between molecular signal intensities and concentrations of glycerol. Four concentrations are 0.5%, 0.25%, 0.05%, 0.025%. The dash line is a linear least-squares fit passing the zero point.