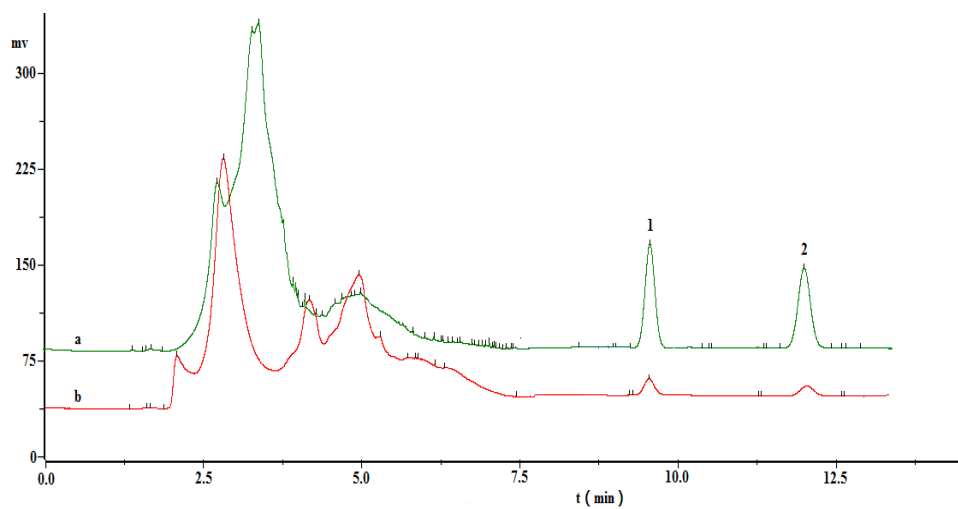


Supplemental Fig. S1. Chromatogram of the standard mixture of chlorpyrifos-methyl (a) and chlorpyrifos (b) (2.0 mg L^{-1} each) without CPE treatment.



Supplemental Fig. S2. HPLC chromatograms of spiked chlorpyrifos-methyl (1) and chlorpyrifos (2). water sample: (a) spiked water of 0.4 mg L^{-1} after CPE. (b) spiked water of 0.4 mg L^{-1} before CPE.