

Electronic Supplementary information for:

Detection of methamphetamine in indoor air using dynamic solid phase microextraction: a supplementary method to surface wipe sampling

Elizabeth J. McKenzie^{a,b}, Gordon M. Miskelly^{a,*}, Paul A. G. Butler^c

^a Forensic Science Programme, School of Chemical Sciences, The University of Auckland, Private Bag 92019 Auckland, New Zealand

^b Forensic & Industrial Science Ltd, PO Box 20103 Glen Eden, Auckland 0641, New Zealand

^c School of Chemical Sciences, The University of Auckland, Private Bag 92019 Auckland, New Zealand

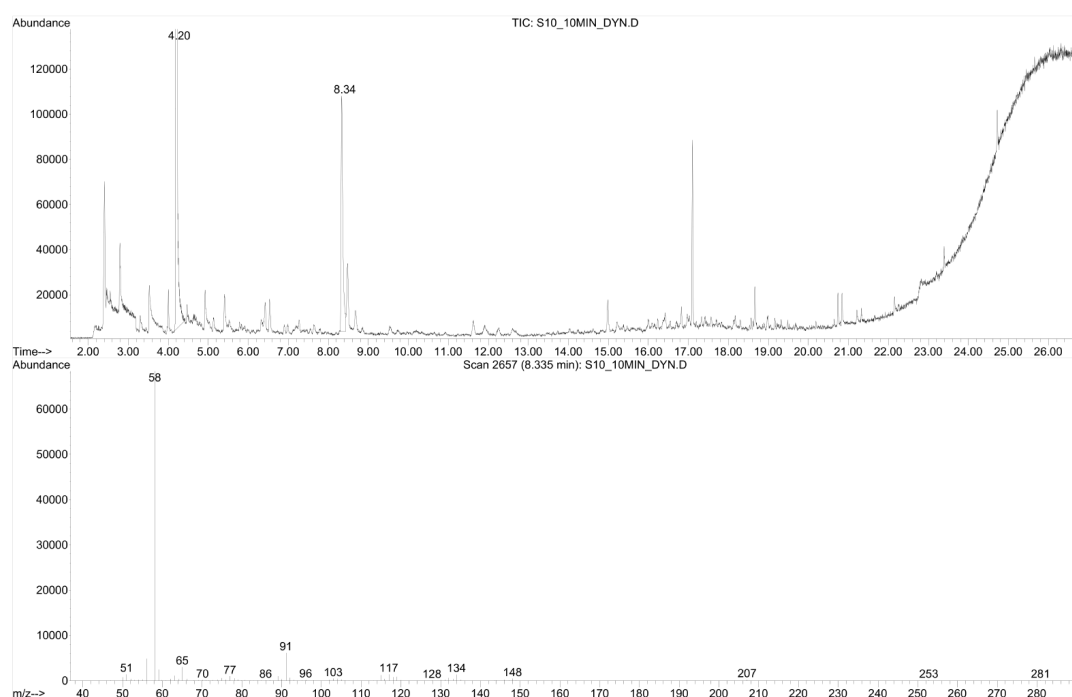


Figure S1: Total ion chromatogram from a PDMS SPME fibre exposed to air at a former clandestine methamphetamine laboratory during cleaning showing 2-butoxyethanol (4.2 min), methamphetamine (8.34 min), and butylated hydroxytoluene (17.1 min). The mass spectrum for the methamphetamine peak at 8.34 min is shown in the lower plot.