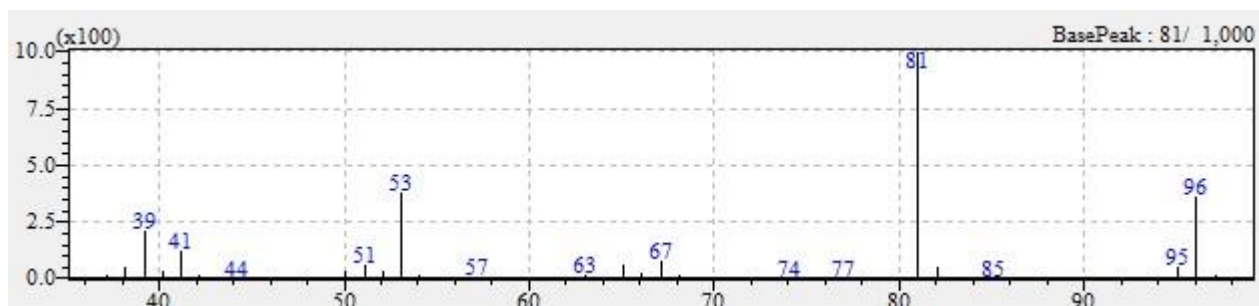
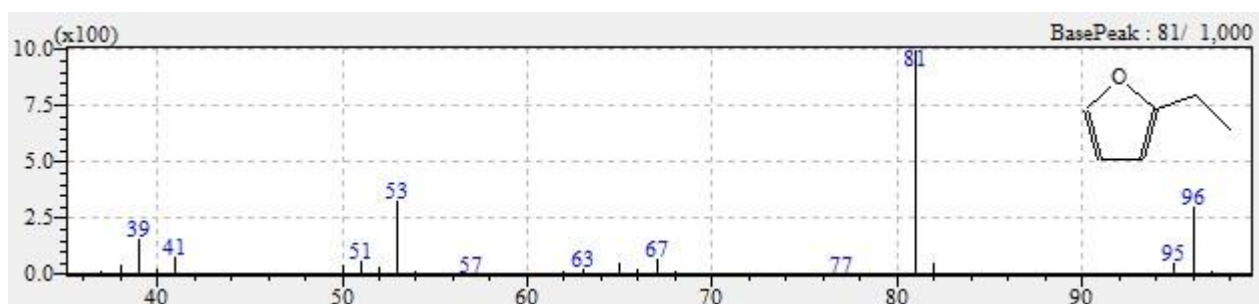


## Common component 1

Mass spectra from sample

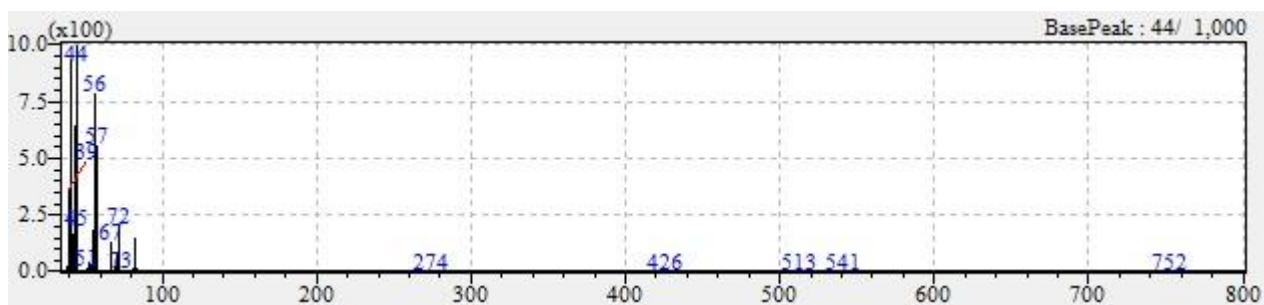


Reference mass spectra

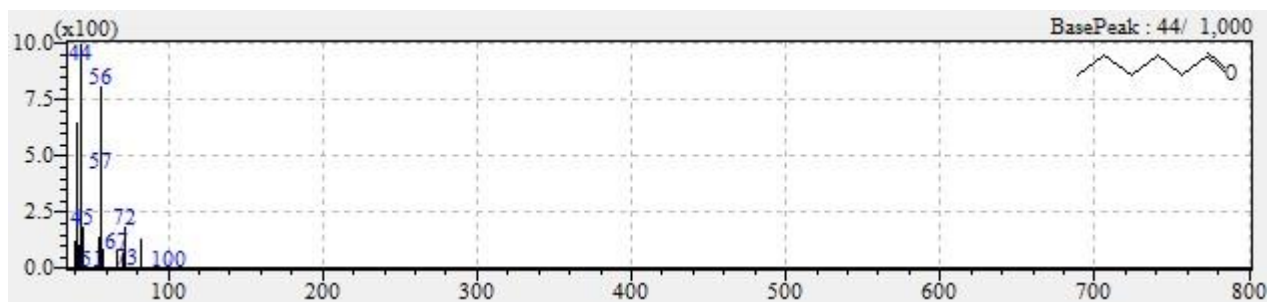


## Common component 2

Mass spectra from sample

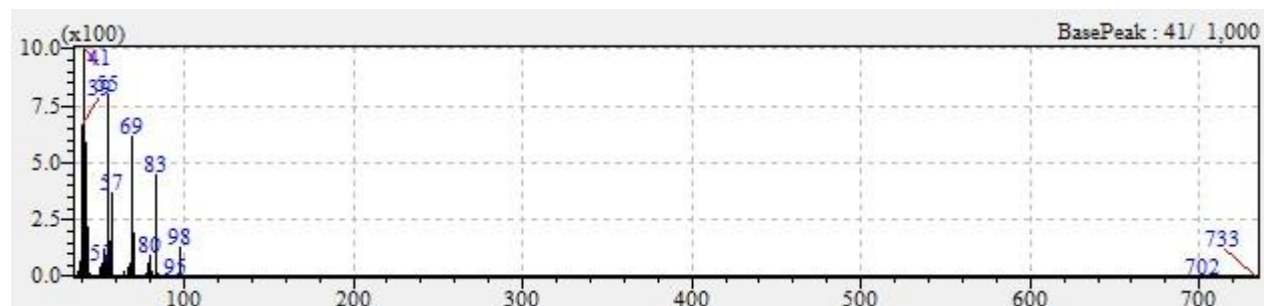


Reference mass spectra

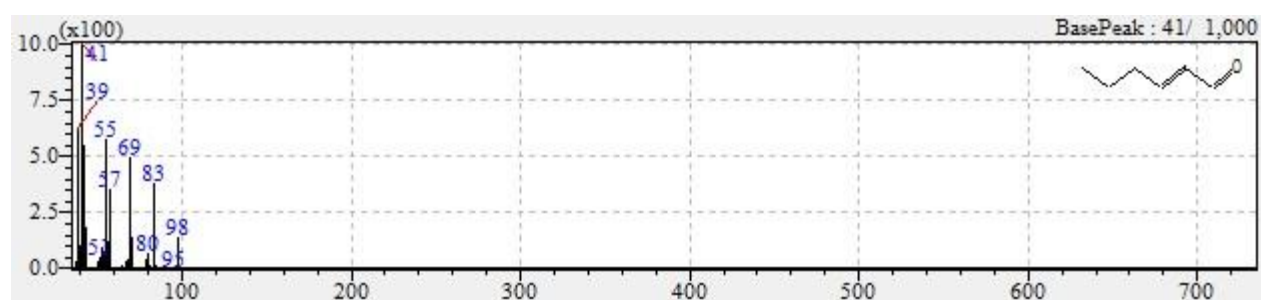


### Common component 3

Mass spectra from sample

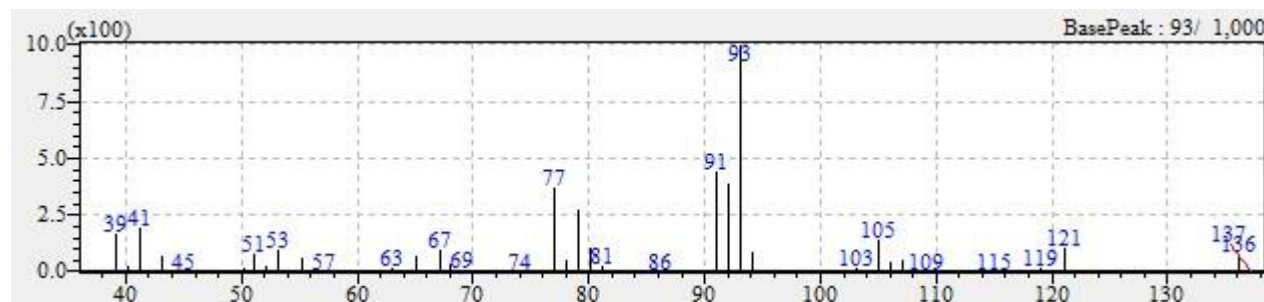


Reference mass spectra

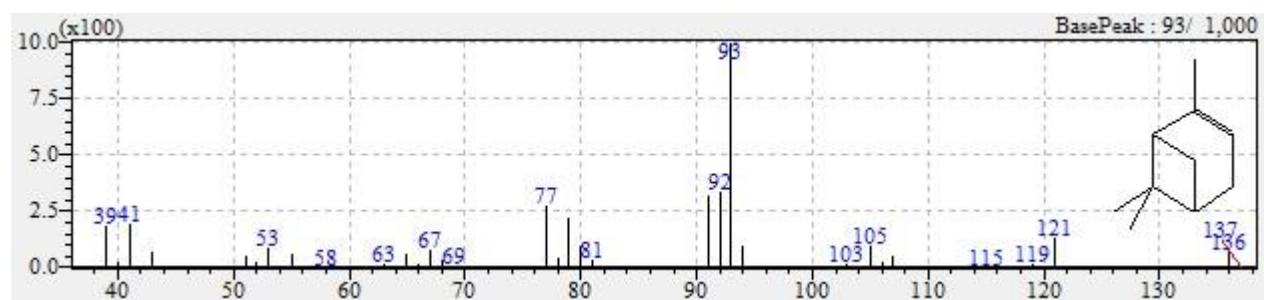


### Common component 4

Mass spectra from sample

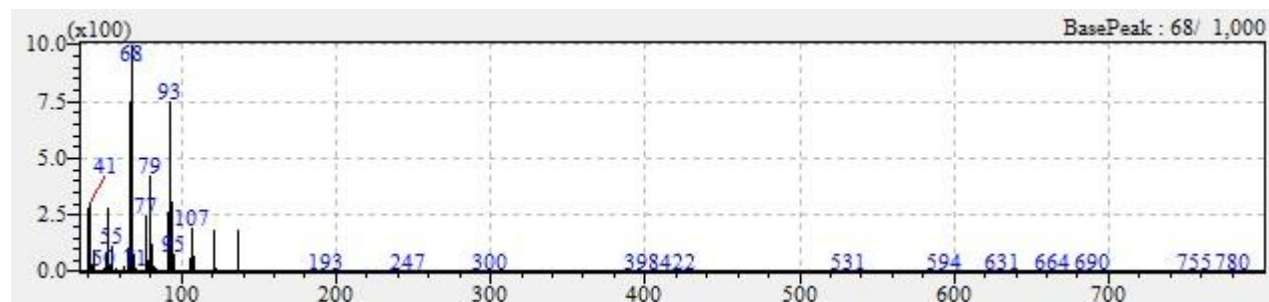


Reference mass spectra

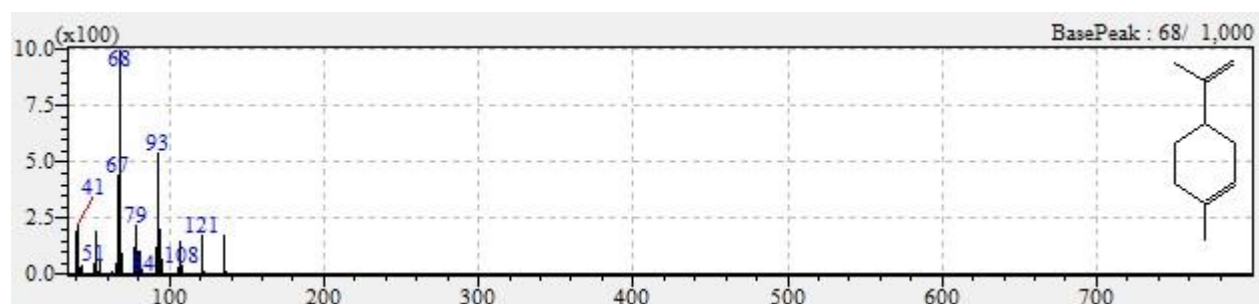


### Common component 5

Mass spectra from sample

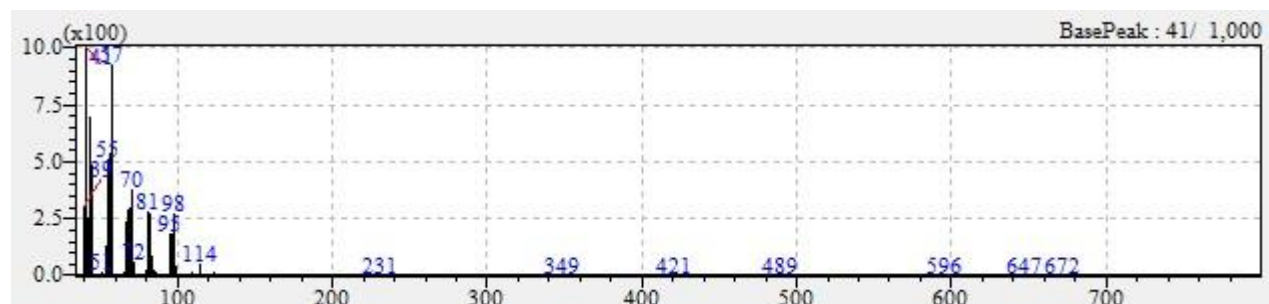


Reference mass spectra

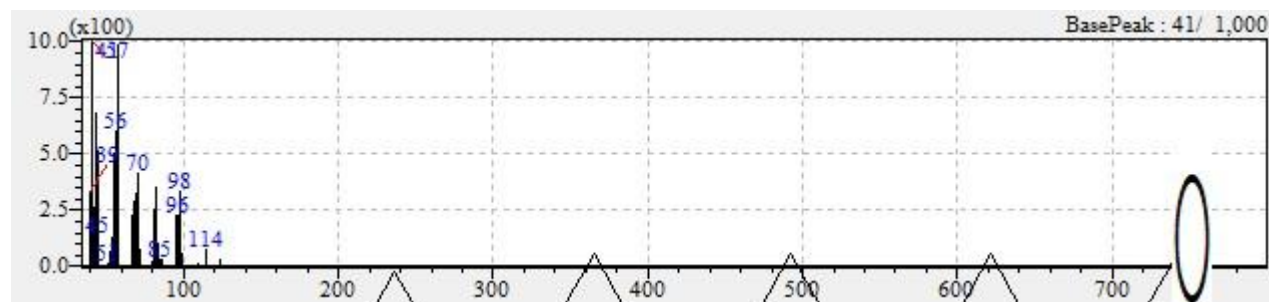


### Common component 6

Mass spectra from sample

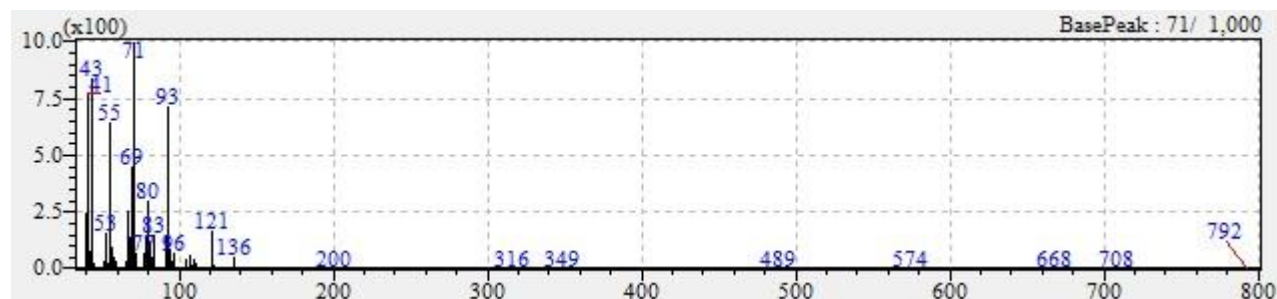


Reference mass spectra

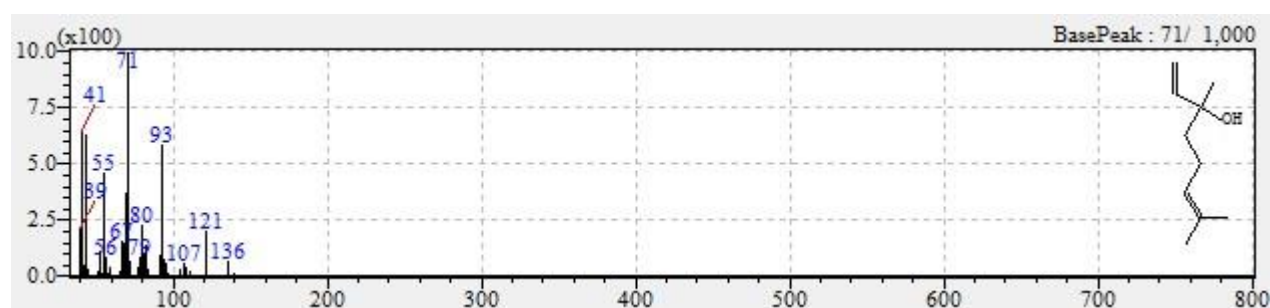


### Common component 7

Mass spectra from sample

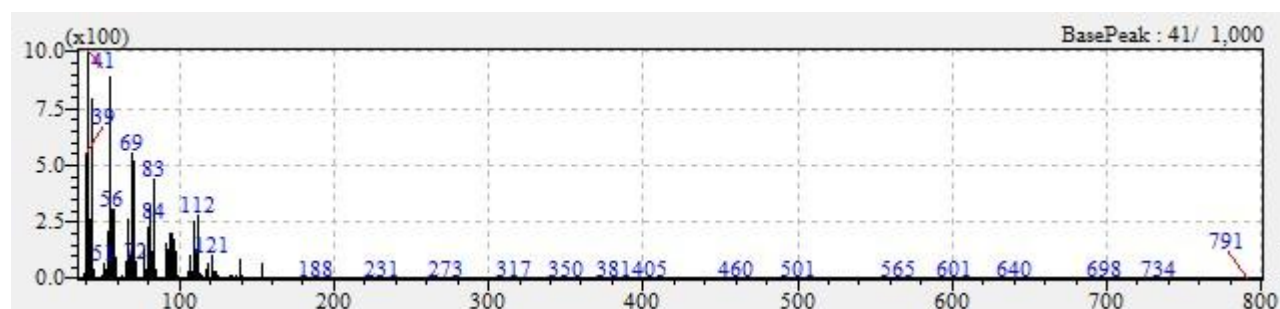


Reference mass spectra

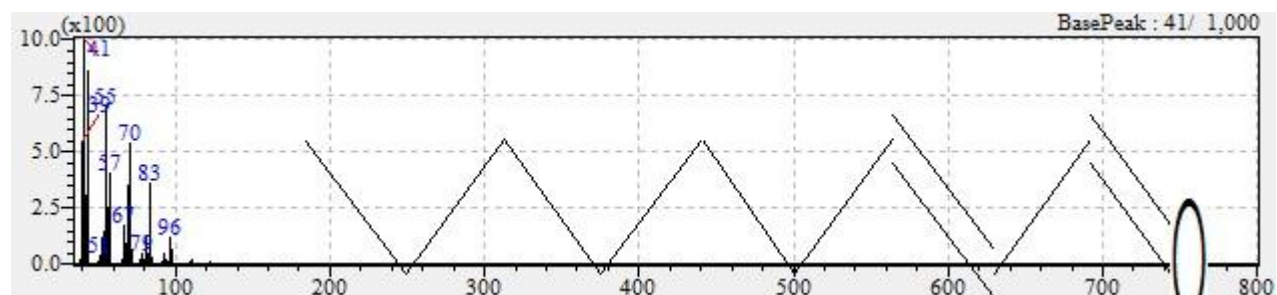


### Common component 8

Mass spectra from sample

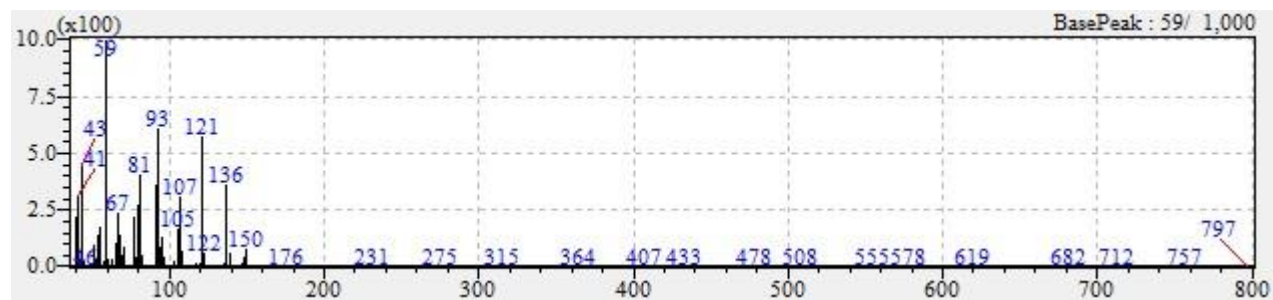


Reference mass spectra

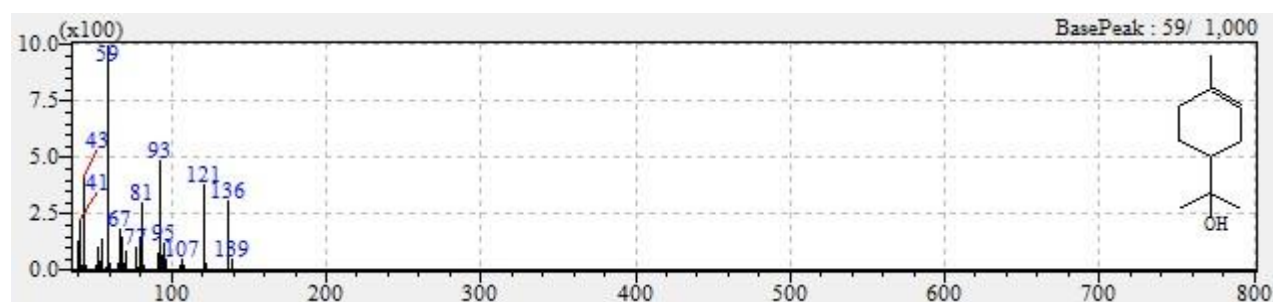


### Common component 9

Mass spectra from sample



Reference mass spectra



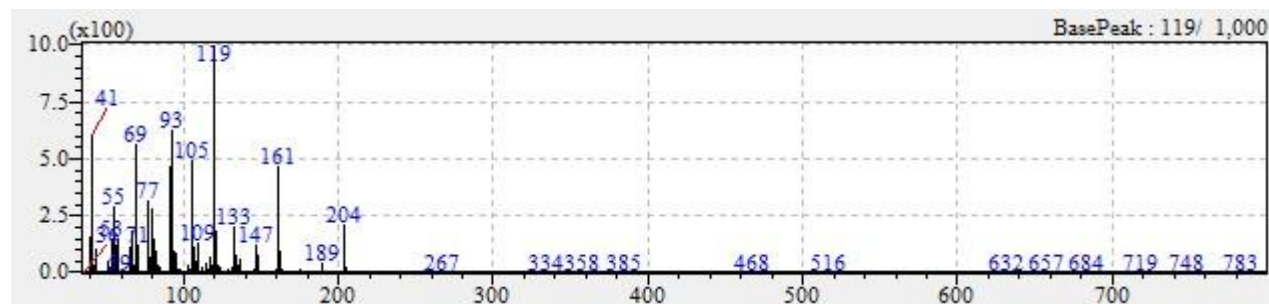
### Common component 10

Mass spectra from sample

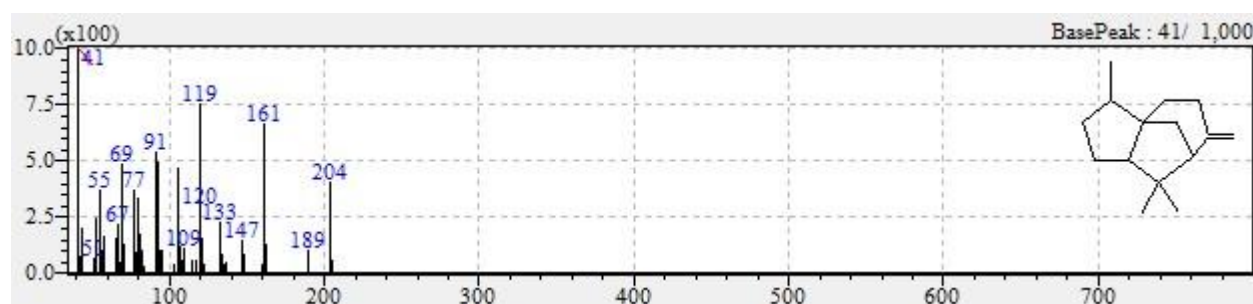
Reference mass spectra

## Common component 11

Mass spectra from sample

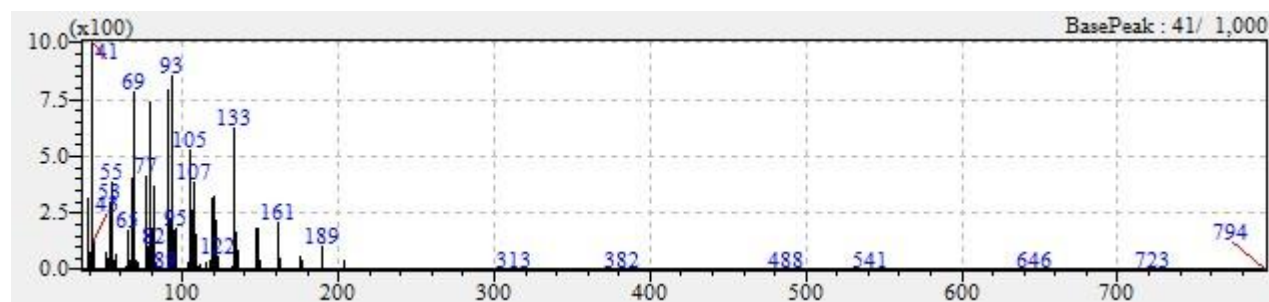


Reference mass spectra

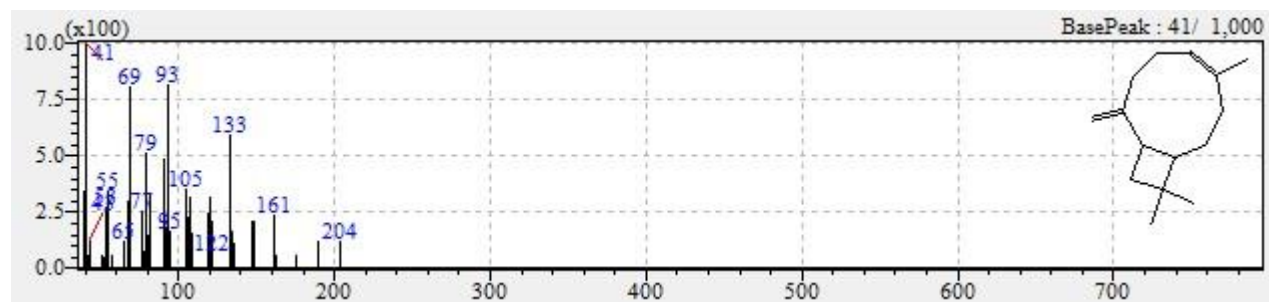


## Common component 12

Mass spectra from sample

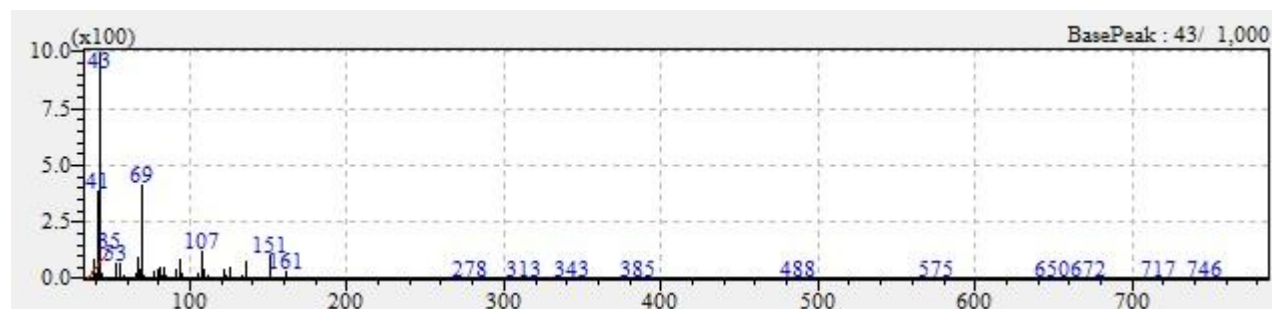


Reference mass spectra

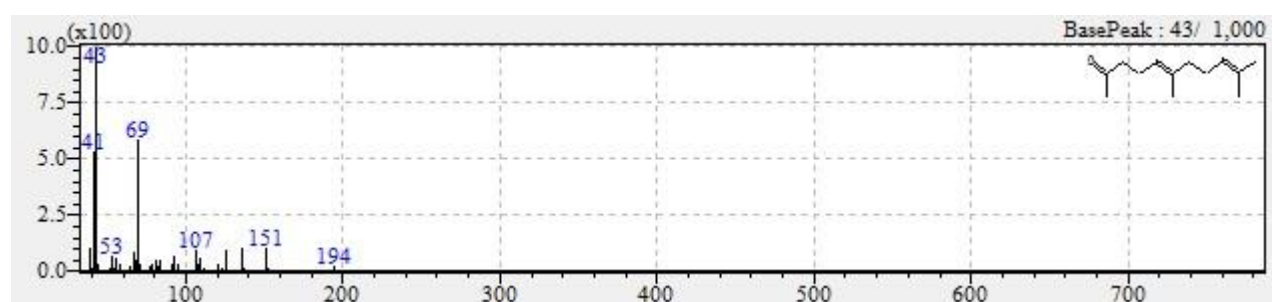


### Common component 13

Mass spectra from sample



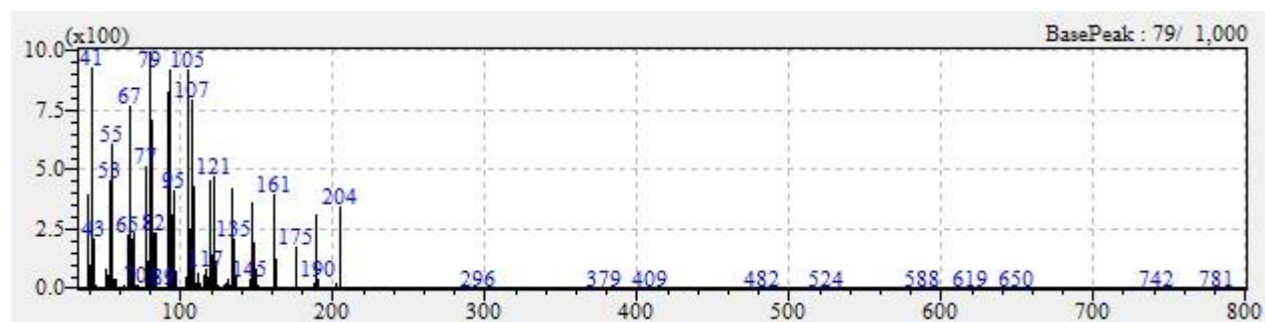
Reference mass spectra



### Common component 14

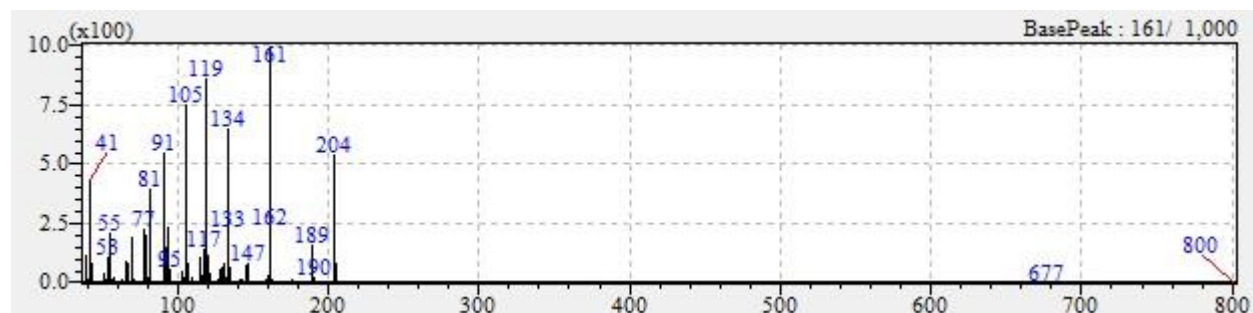
Unknown (sesquiterpene)

Mass spectra from sample

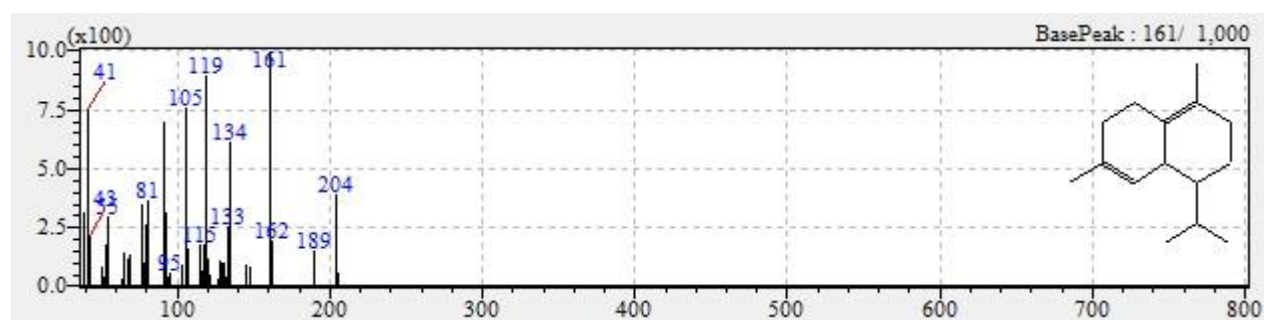


### Common component 15

Mass spectra from sample

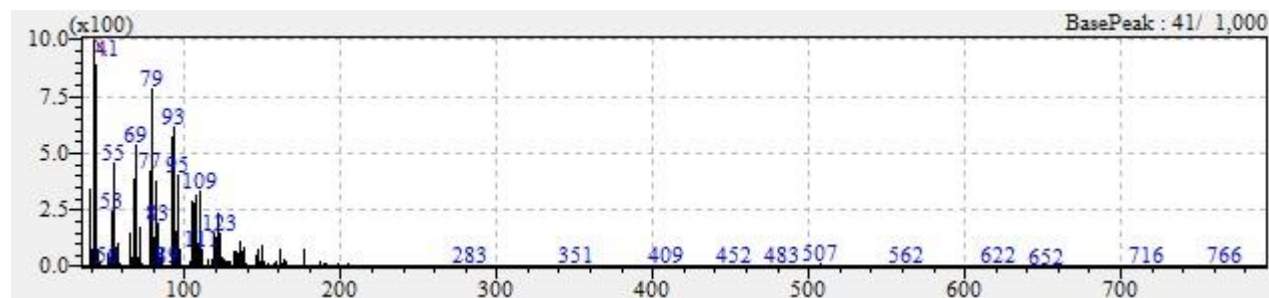


Reference mass spectra

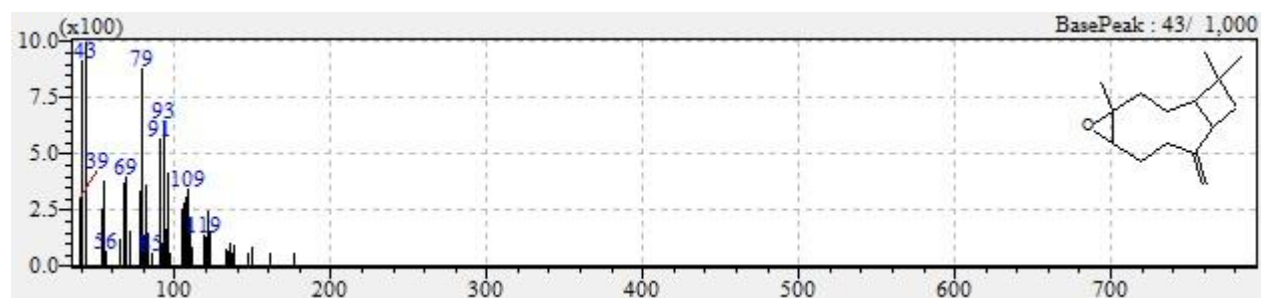


### Common component 16

Mass spectra from sample



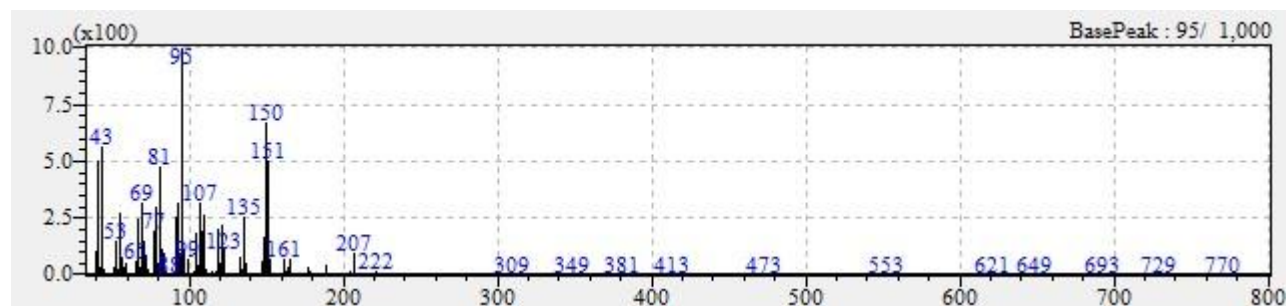
Reference mass spectra



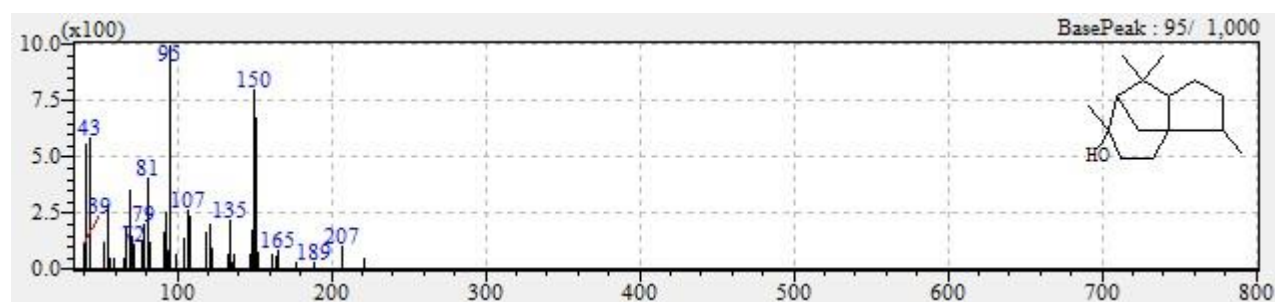


### Common component 17

Mass spectra from sample

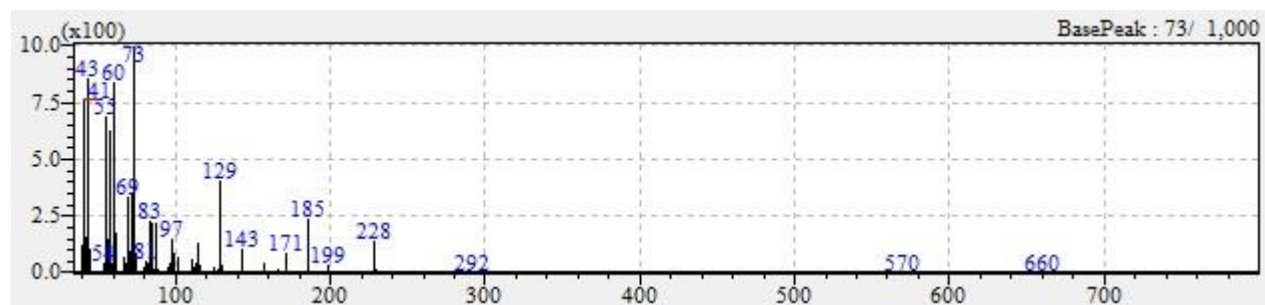


Reference mass spectra

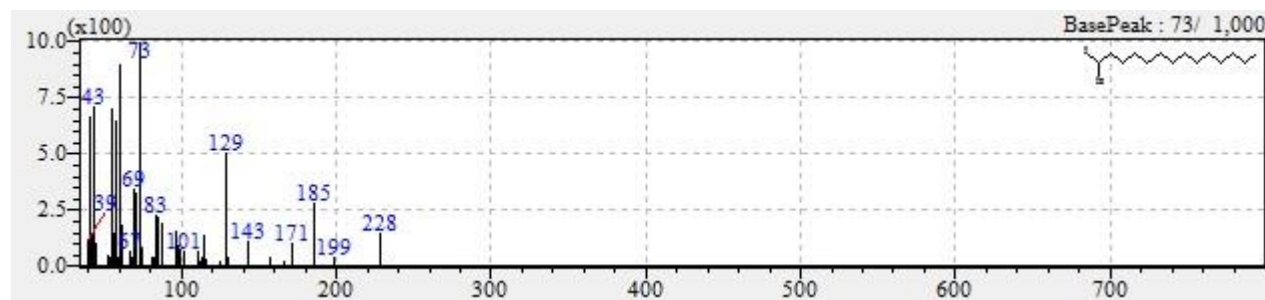


### Common component 18

Mass spectra from sample

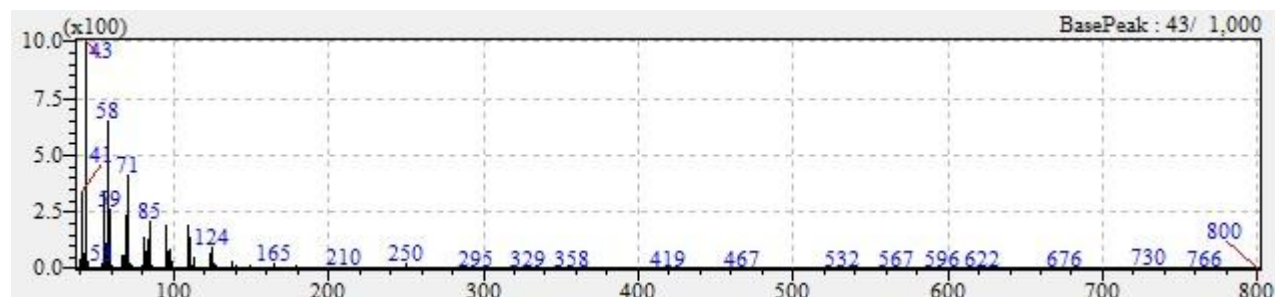


Reference mass spectra

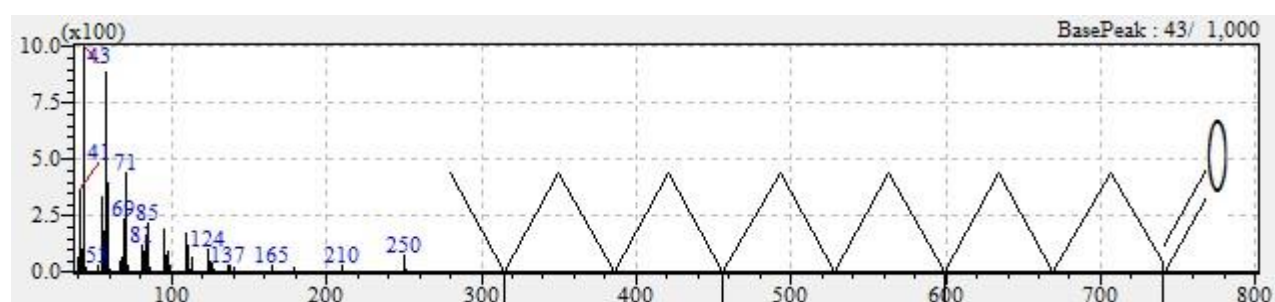


### Common component 19

Mass spectra from sample

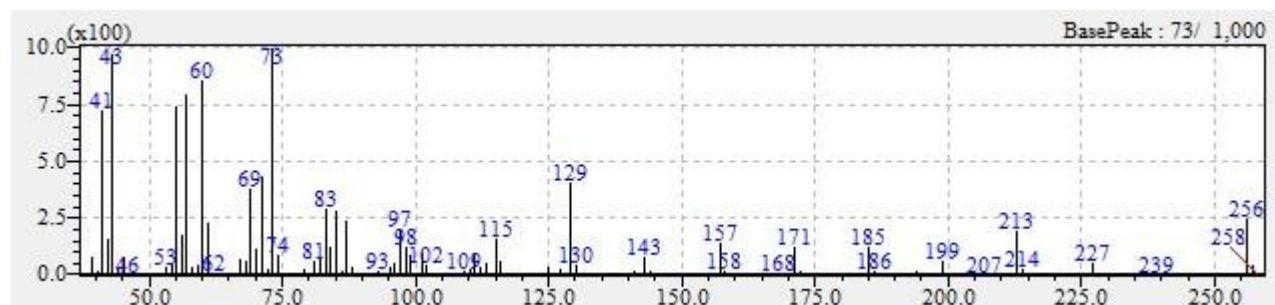


Reference mass spectra

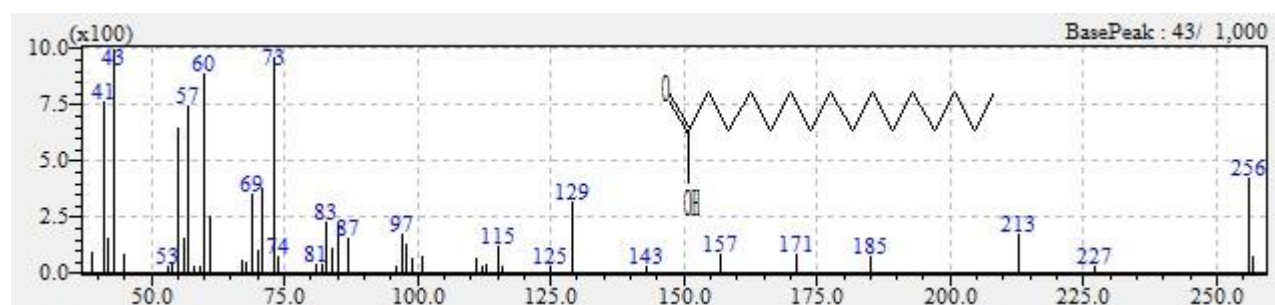


### Common component 20

Mass spectra from sample

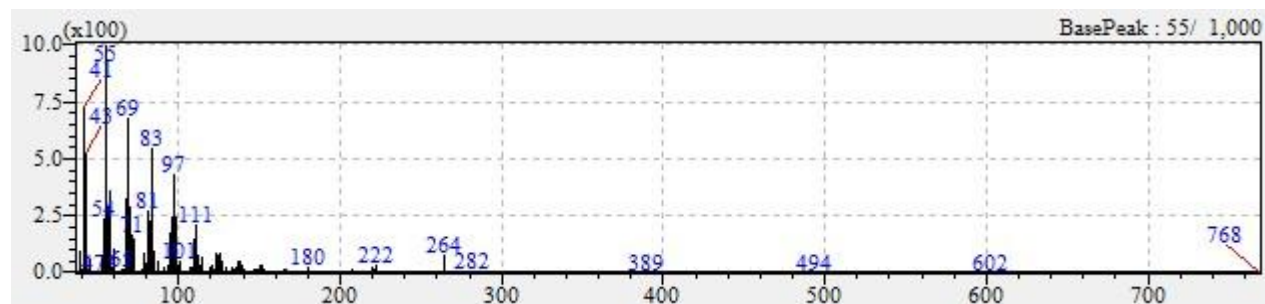


Reference mass spectra



## Common component 21

Mass spectra from sample



Reference mass spectra

