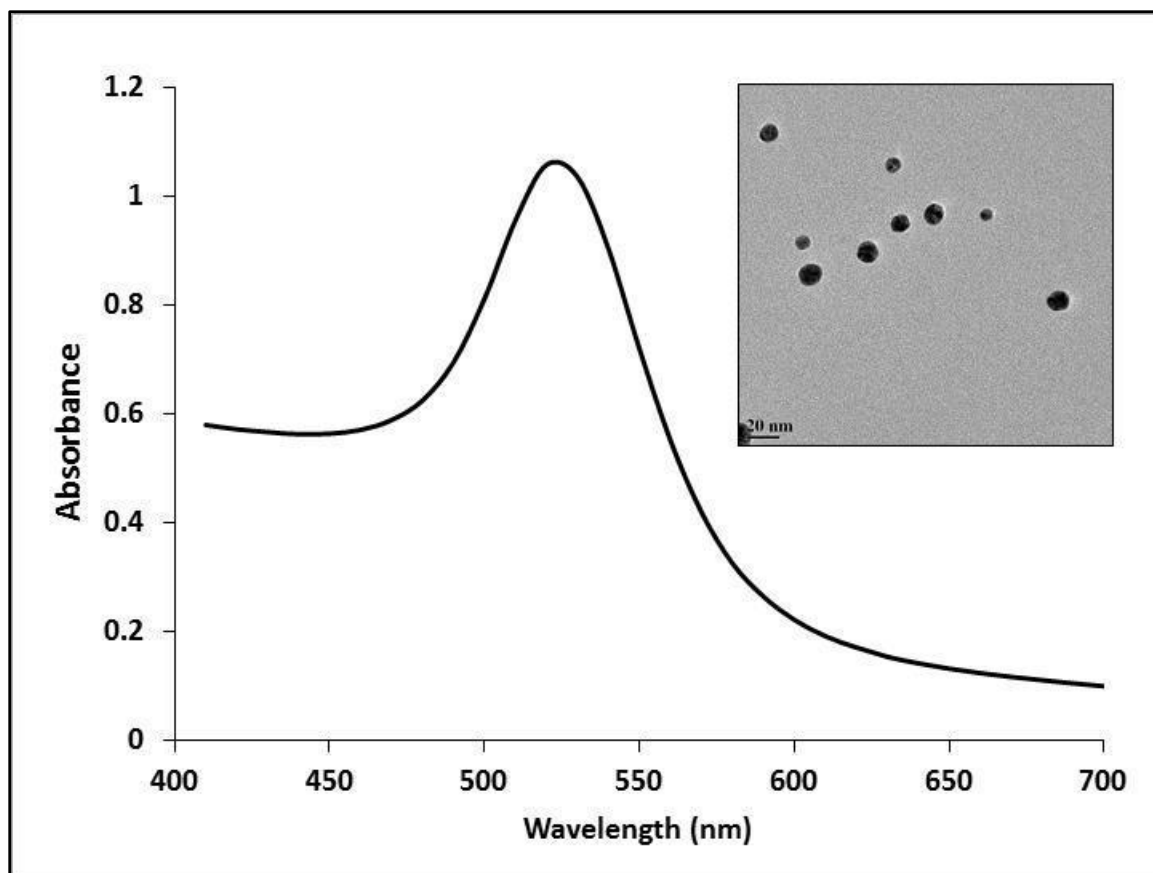
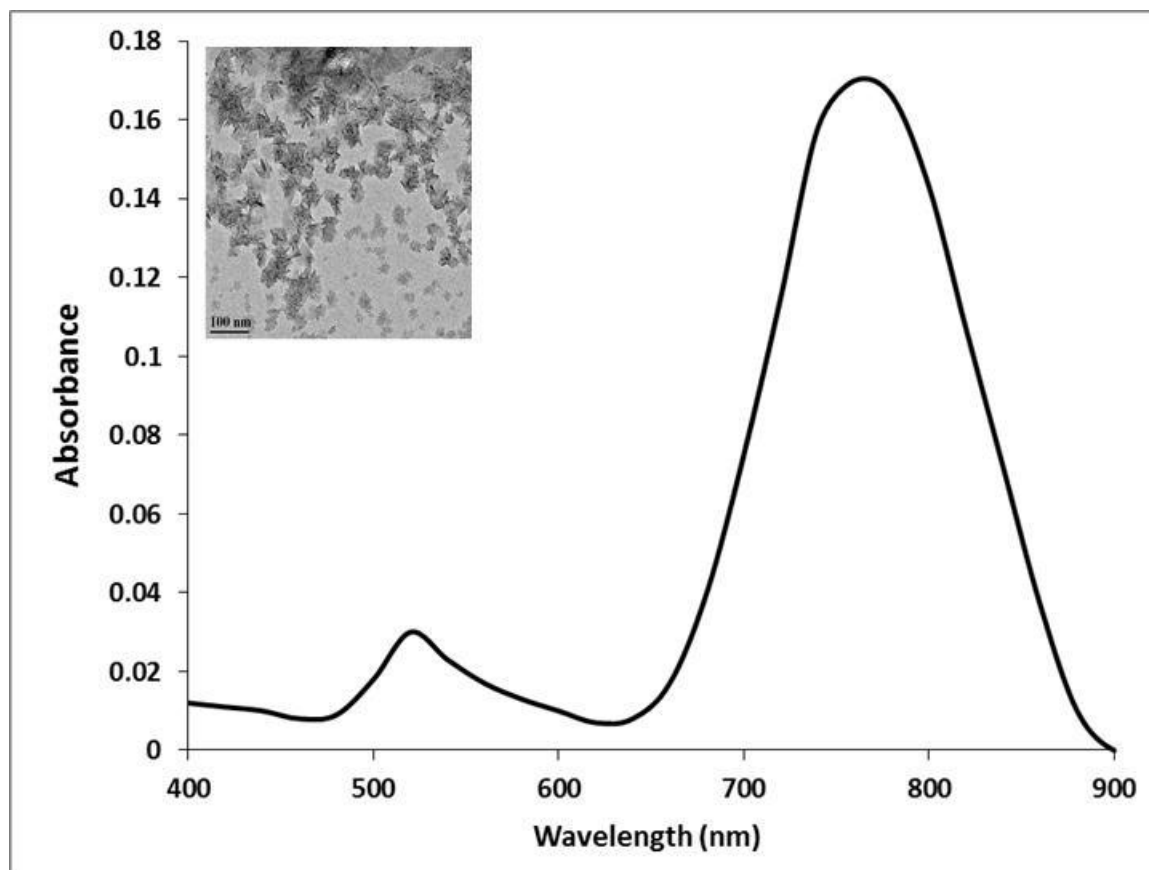


Supplementary material of paper entitled: **Gold nanoparticles enhanced chemiluminescence - A novel approach for sensitive determination of aflatoxin-B1** authored by Abhijith K.S, Ragavan K.V and Thakur M.S. *submitted to your esteemed journal Analytical methods.



Supplementary Figure 1: Absorbance spectra of spherical gold nanoparticles (inset image showing TEM picture of the same).



Supplementary Figure 2: Absorption spectra of Gold nanorods (SEM image in the inset).