

A complex imprinted polymer membrane combined with solid phase fluorescence detection for selective analysis of *L*-phenylalanine in water-abundant samples

Jianxiang Huang, Yuling Hu*, Gongke Li*

School of Chemistry and Chemical Engineering, Sun Yat-sen University, Guangzhou, 510275, China

* Corresponding author: Gongke Li, Yuling Hu

Tel. : +86-20-84110922

Fax : +86-20-84115107

E-mail : cesgkl@mail.sysu.edu.cn

ceshyl@mail.sysu.edu.cn

Supplementary Material

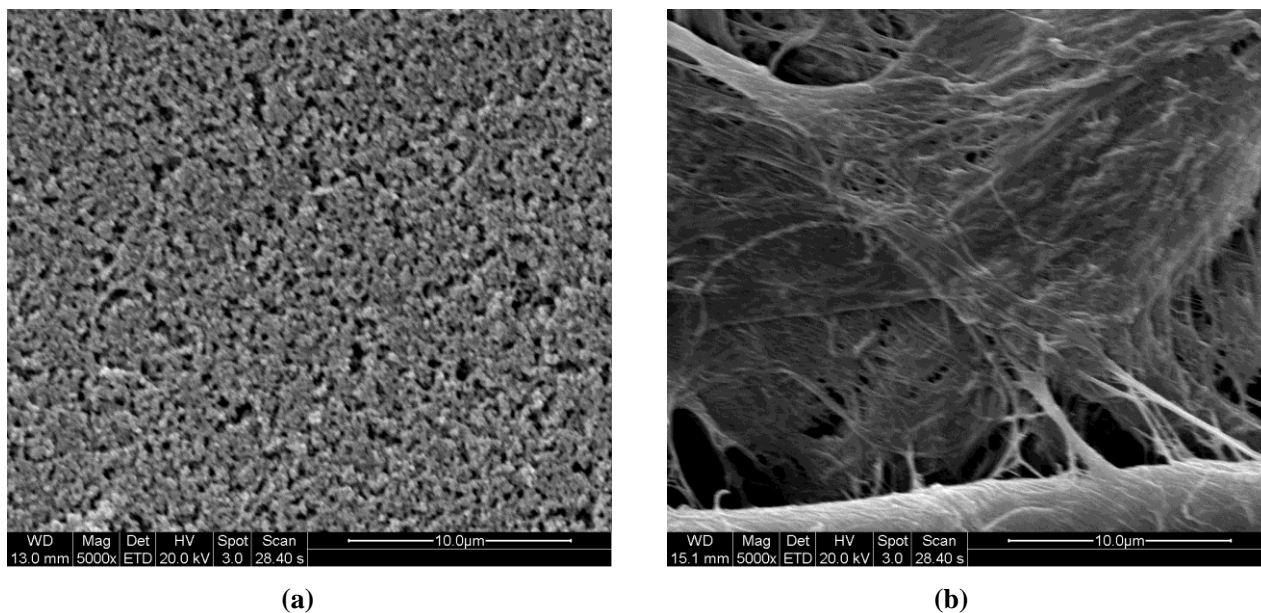


Fig. S1 Scanning electron micrographs of FP substrate and CIP membrane.

Magnifications: 5000.

(a) CIP membrane, (b) FP substrate.

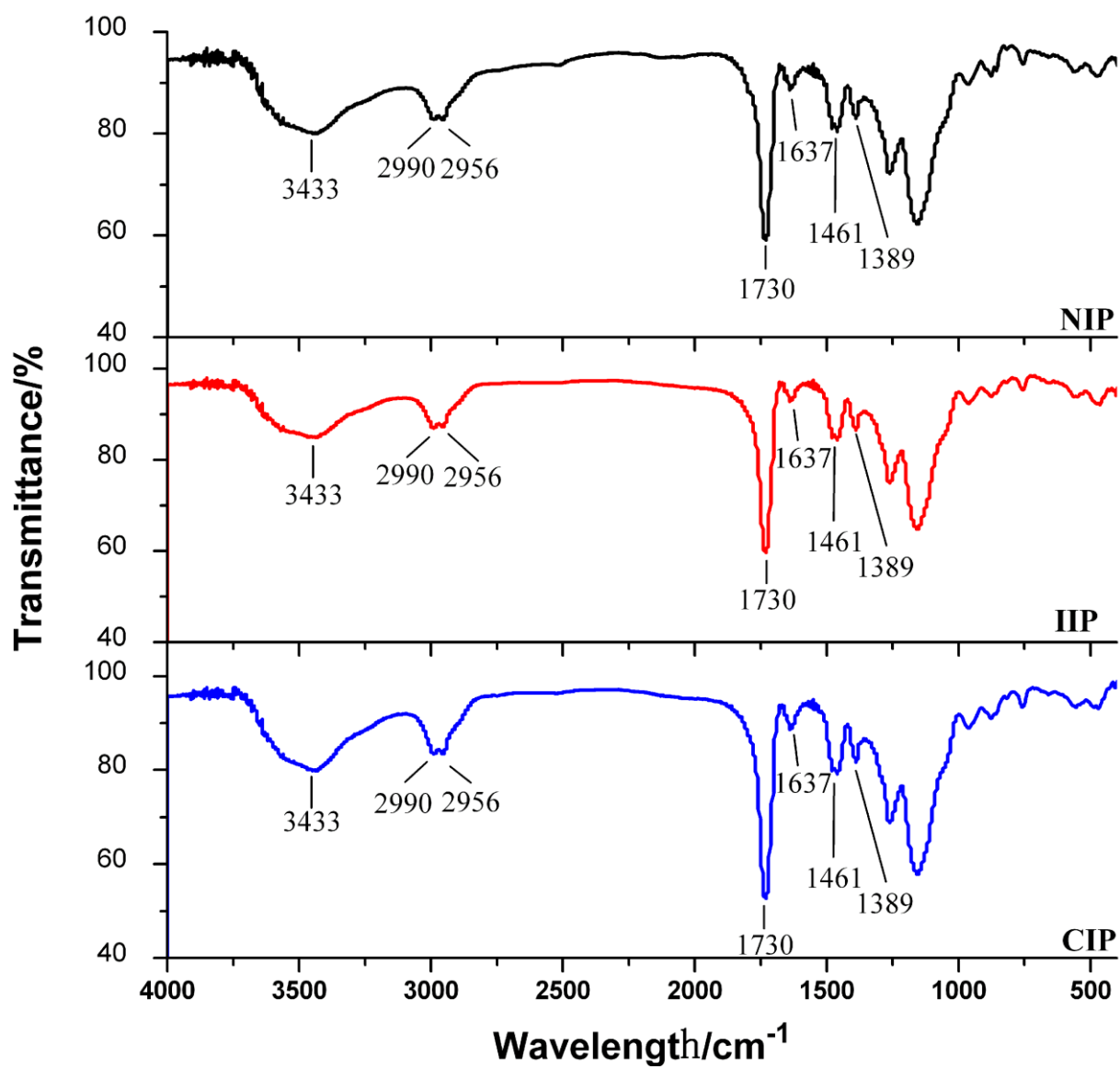


Fig. S2 Infrared spectra of CIP, IIP and NIP.