

The figures which were not showed in manuscript submitted are now as the following, and they are used as supplementary explanation materials.

1. Effect of the electrolyte

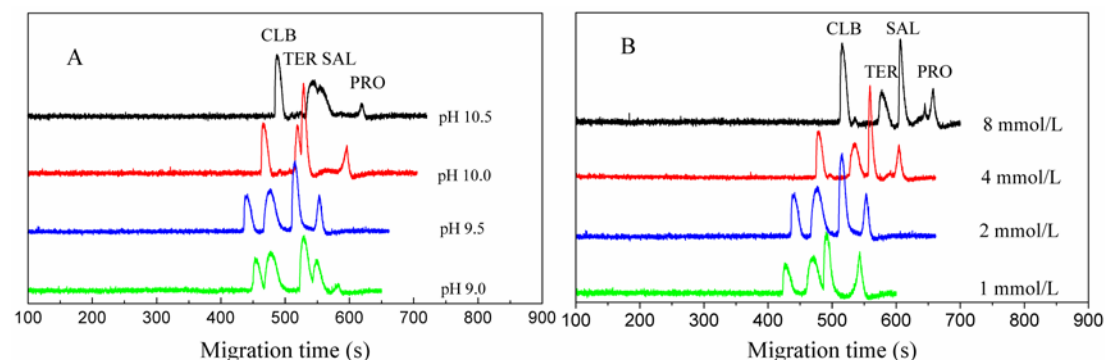


Fig. S1. Effects of pH (A) and concentration (B) of borate buffer on separation of four β_2 -agonists

Conditions: detection potential 1.17 V, separation voltage 8 kV, electrokinetic injection $8 \text{ kV} \times 6 \text{ s}$,

$5 \text{ mmol L}^{-1} \text{ Ru(bpy)}_3^{2+}$ with 50 mmol L^{-1} phosphate buffer at pH 8.5 in the detection cell.

2. Effect of separation voltage

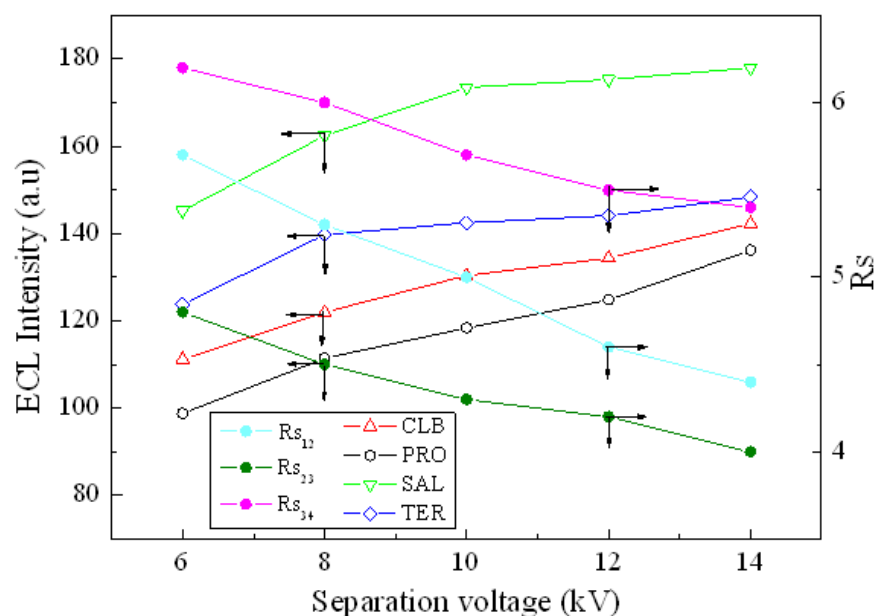


Fig. S2. Effect of separation voltage on ECL intensity and R_s .

Conditions: electrophoretic buffe: 2.0 mmol L^{-1} borate buffer at pH 9.5; other conditions are the

same as in the Fig. S1. R_{s12} is the R_s between CLB and TER, R_{s23} is the R_s between TER and SAL, R_{s34} is the R_s between SAL and PRO.

3 Effect of injection voltage and time

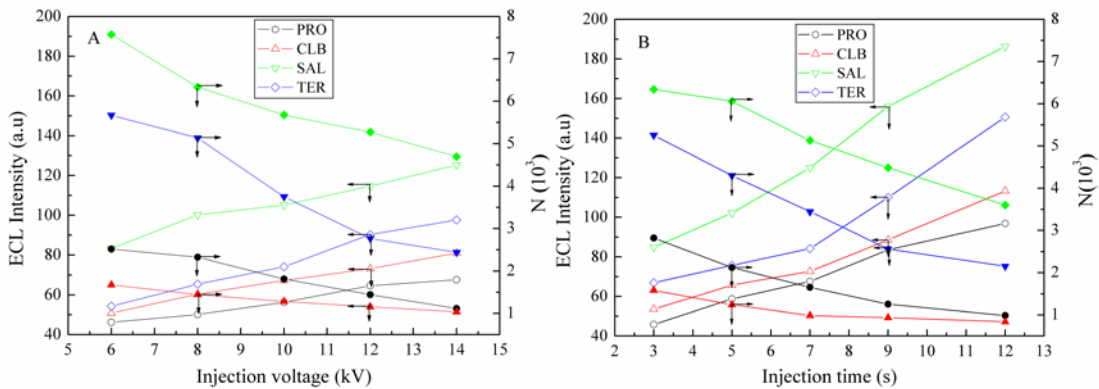


Fig. S3. Effects of injection voltage (A) and injection time (B) on ECL intensity and N

Conditions: running buffer 2.0 mmol L⁻¹ borate at pH 9.5, separation voltage 8 kV, other conditions are the same as those in the Fig. S1.