

Supplementary Data

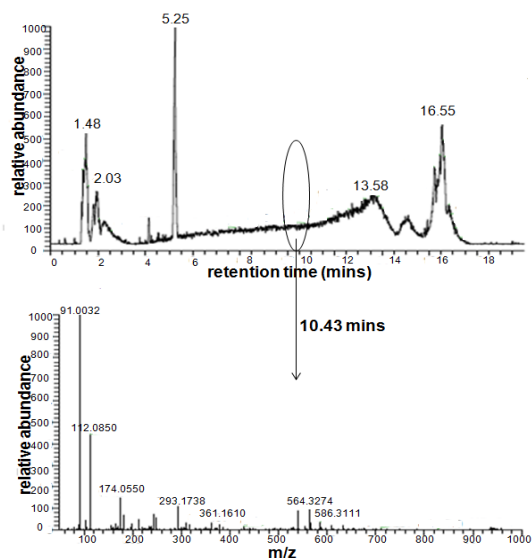


Figure S1. Base peak chromatogram for IEC separated ADOM peak 3 with extracted mass spectrum for a compound eluting at 10.43 minutes.
 5 Flow rate 0.8 mL/min, capillary 4500 V, collision energy 20 eV, nebulizer 10.0 psi, dry gas 5.00 L/min, dry temperature 350 °C.

- 10 Table S1. Retention times, retention factors (k) and peak efficiency data (N) for the 50 $\mu\text{g/mL}$ mixed sugar standard mixture prepared to optimise the IEC-PAD method. Flow rate 1.0 mL/min of a 50 to 100 mM KOH gradient, injected volume 25 μL . All standard and sample injections were performed in triplicate, with standard retention time and peak area data <5%.
- 15

#	SUGAR	RT (MINS)	K	PEAK HEIGHT (NC)	N
1	FRUCTOSE	2.61	0.63	1.59	2233
2	MANNITOL	3.49	1.18	0.33	3993
4	ARABINOSE	10.0	5.25	0.59	1539
5	GLUCOSE	11.9	6.44	0.57	2179
6	GALACTOSE	14.2	7.88	0.73	2280
7	XYLOSE	17.3	9.81	0.59	2047
3	SORBITOL	19.26	11.03	0.19	2055
8	SUCROSE	25.6	15.00	0.23	1985
9	RIBOSE	34.5	20.56	0.30	1362
10	MALTOSE	39.5	23.69	0.22	2667