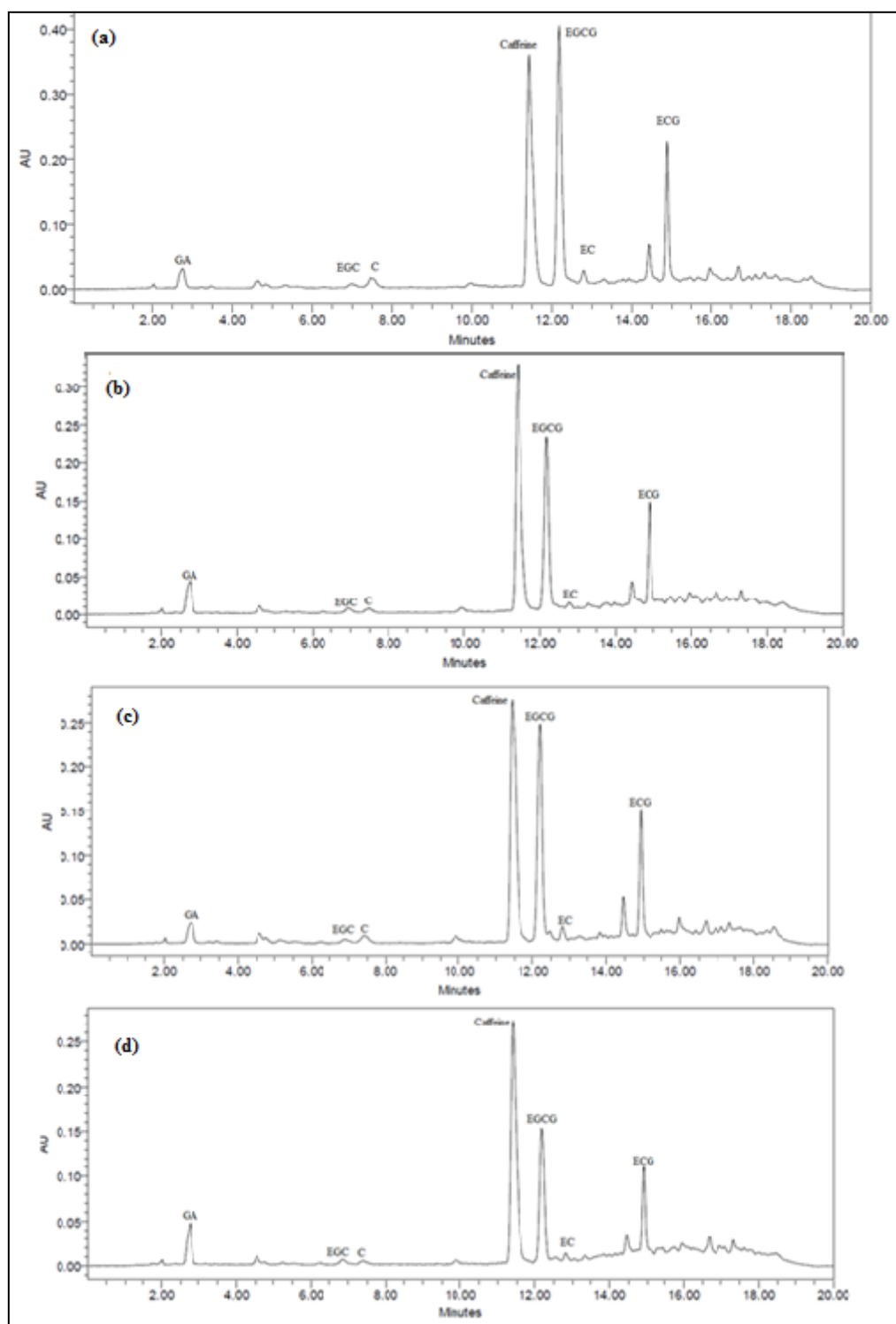
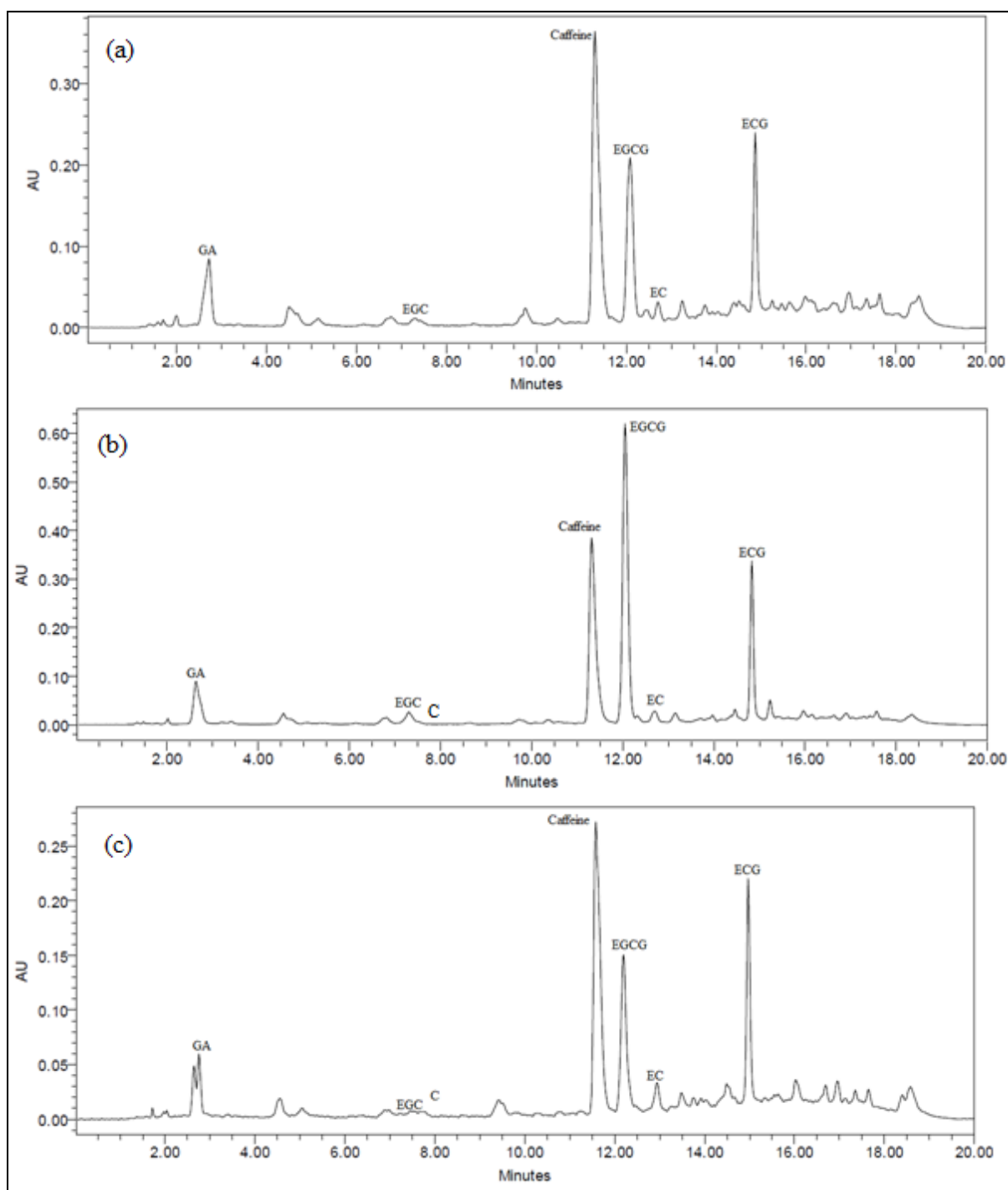


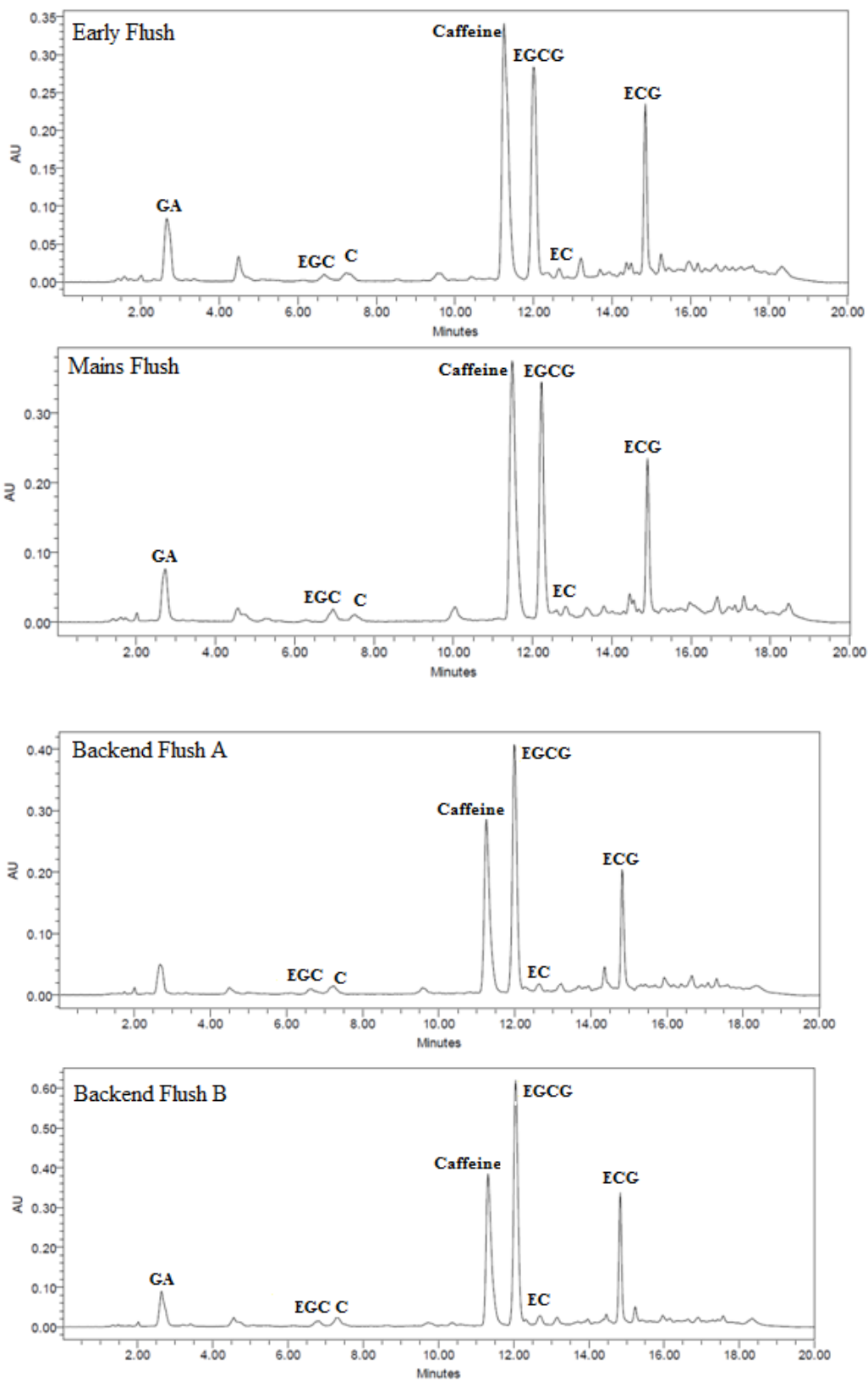
ESM_1: Chromatogram of withered and fermented leaves: a) withered; b) 50 min fermented; c) 60 min fermented; d) 70 min fermented tea samples



ESM_2: Chromatograms for (a) Nilgiri; (b) Kangra; (c) Darjeeling orthodox tea



ESM_3: Chromatograms showing effect of seasonal variation on leaves



ESM_4: HPLC chromatograms of different grades of tea samples; (A) TGBOP,(B) SFTFOP,(C) GOF, (D) FOF, (E) NGBL and (F) NGLL.

