

The figures which were not showed in manuscript submitted are now as the following, and they are used as supplementary explanation materials.

1. Effect of various mass ratios of dispersant to sample matrix on recovery

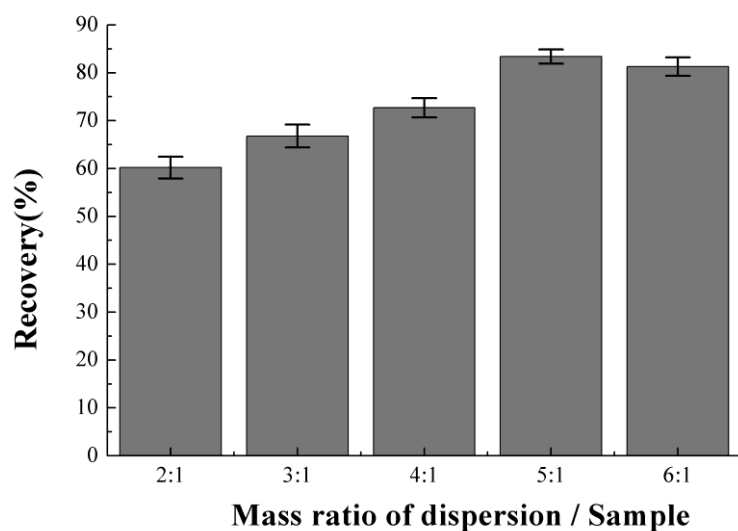


Fig. S1 Effect of various mass ratios of dispersant to sample matrix on recovery

2. Effect of ethyl acetate volume on recovery

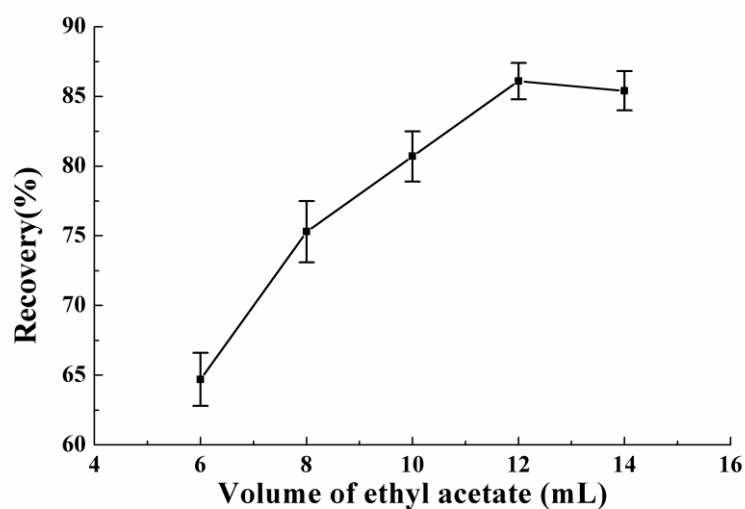


Fig. S2 Effect of ethyl acetate volume on recovery

3. Effect of pH (A) and concentration (B) of Tris-HCl buffer on ECL intensity

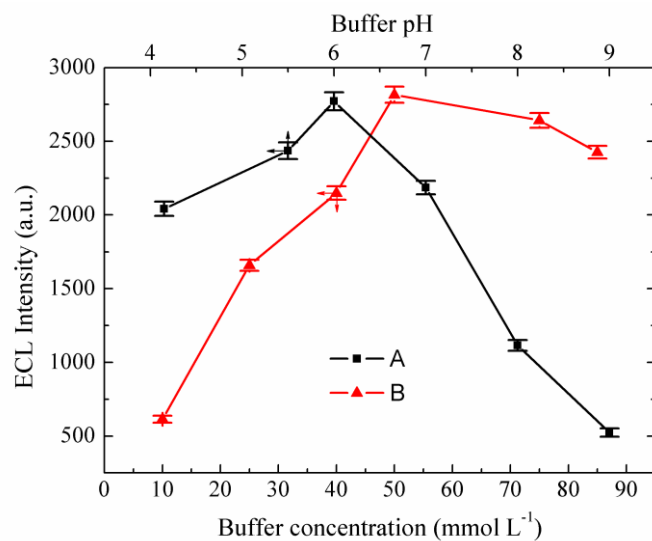


Fig. S3 Effect of pH (A) and concentration (B) of tris-HCl buffer on ECL intensity

Condition: separation voltage 12 kV, detection potential 1.17 V, electrokinetic injection 8 kV×8 s,

ECL solution 5 mmol L⁻¹ Ru(bpy)₃²⁺ with 50 mmol L⁻¹ phosphate buffer at pH 8.5.