

Electronic Supplementary Information for

¹H NMR based metabolic profiling of the processing effect on **Rehmanniae Radix**

Pan He^{a,b}, Zhen-Yu Li^{a,*}, Jie Xing^a, Xue-Mei Qin^{a,*}, Guan-Hua Du^{a,c}

^a Modern Research Center for Traditional Chinese Medicine of Shanxi University,
No.92, Wucheng Road, Taiyuan 030006, Shanxi, People's Republic of China

^b College of Chemistry and Chemical Engineering of Shanxi University, No.92,
Wucheng Road, Taiyuan 030006, Shanxi, People's Republic of China

^c Institute of Materia Medica, Chinese Academy of Medical Sciences, Beijing
100050, People's Republic of China.

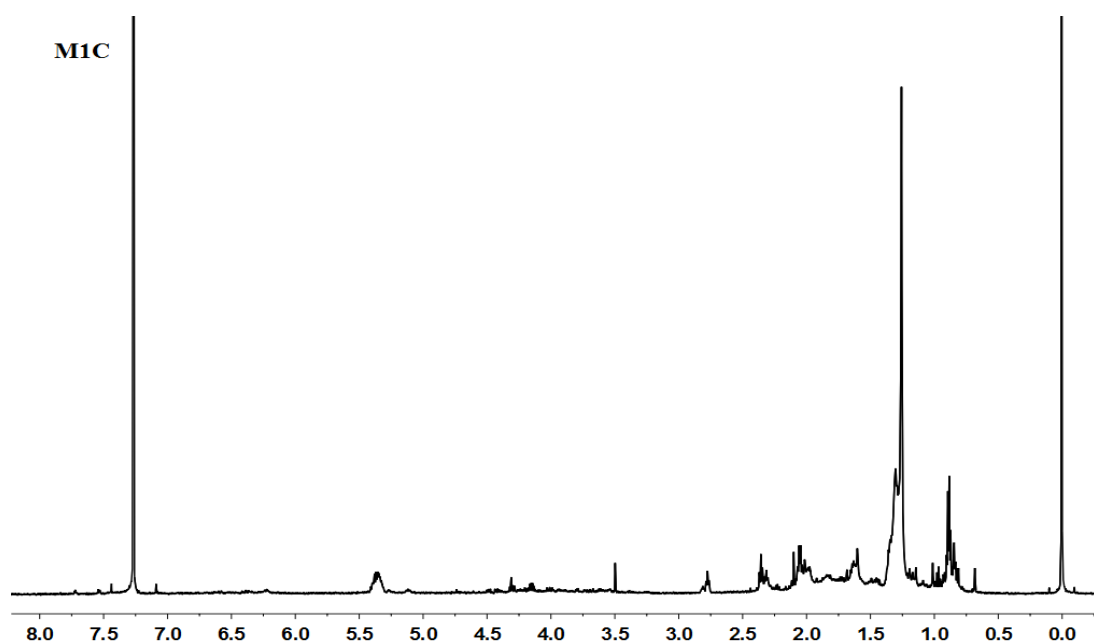


Figure S1 ¹H NMR spectrum of chloroform extracts of M1 procedure in the processed
Rehmanniae Radix

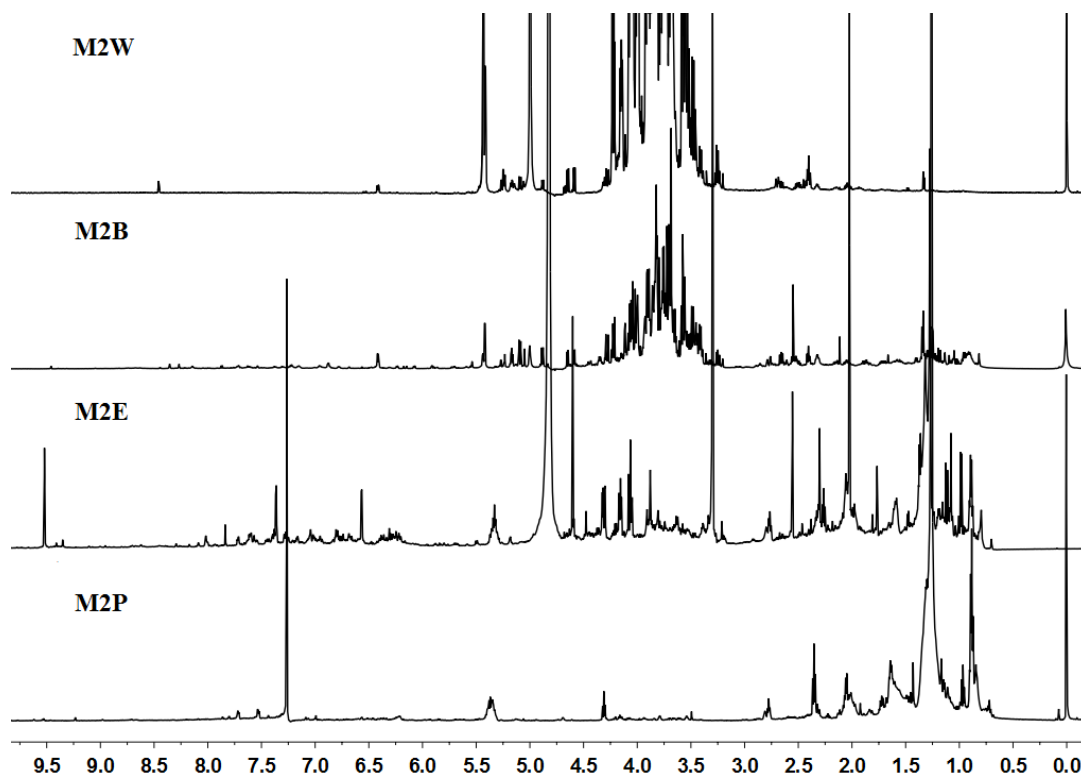


Figure S2 ¹H NMR spectrum of different solvent extracts of M2 procedure in the processed *Rehmanniae Radix*.