

Fig. S1. DPV of the MIP-PoPD/CSPt without SDS in the electro-polymerization in 1 mM $[\text{Fe}(\text{CN})_6]^{3-/4-}$ containing 0.1 M KCl after incubation for 15 min in 0.1 M PBS (pH=7.0) containing different concentrations of Meta solution: 1.11×10^{-7} , 3.33×10^{-7} , 7.77×10^{-7} , 1.33×10^{-6} , 3.54×10^{-6} , 6.29×10^{-6} , 1.08×10^{-5} M. The inset shows the relationship between the current and the concentration of Meta. The measurements were conducted immediately after the incubation was completed.

Fig. S2. DPV of the MIP-PoPD/CSPt in 1 mM $[\text{Fe}(\text{CN})_6]^{3-/4-}$ containing 0.1 M KCl after incubation for 15 min in 0.1 M PBS (pH=7.0) containing different concentrations of β_2 -agonist solution. The inset shows the relationship between the current and the concentration of β_2 -agonist. The measurements were conducted immediately after the incubation was completed

Fig. S1

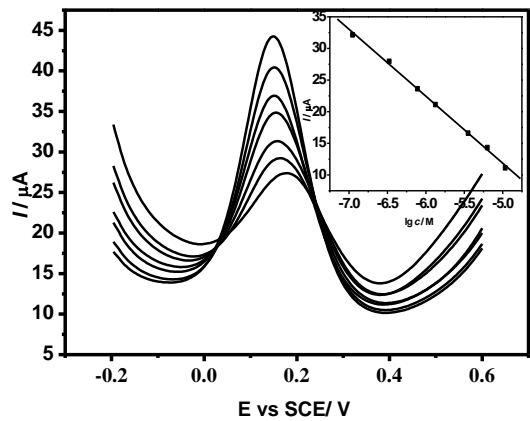


Fig. S2

