

Supplementary Information

Anal. Methods

Simultaneous determination of nine major constituents in *Agrimonia pilosa*

Ledeb. by HPLC-DAD-ESI-MS/MS

Qinghua Jiang^{a,b}, Jianghao Ma^a, Ying Wang^a, Liqing Ding^c, Lixia Chen^{a,*}, Feng Qiu^{a,c,*}

^aDepartment of Natural Products Chemistry, School of Traditional Chinese Materia Medica, Key Laboratory of Structure-Based Drug Design & Discovery, Ministry of Education, Shenyang Pharmaceutical University, Shenyang 110016, Liaoning Province, China

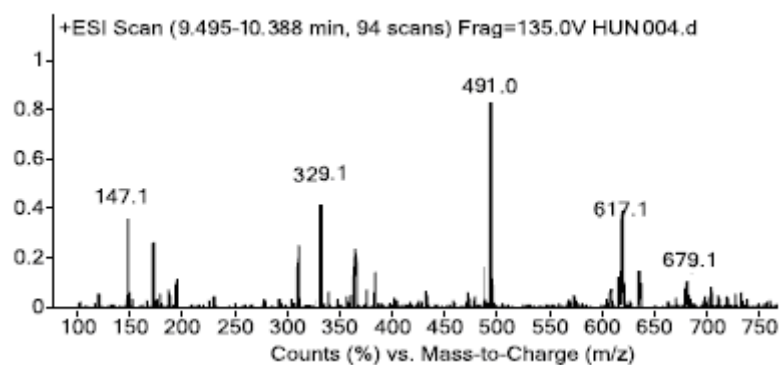
^bDepartment of Pharmacy, Shengjing Hospital of China Medical University, Shenyang 110004, Liaoning Province, China

^cTianjin State Key Laboratory of Modern Chinese Medicine, Tianjin University of Traditional Chinese Medicine, Tianjin 300193, China.

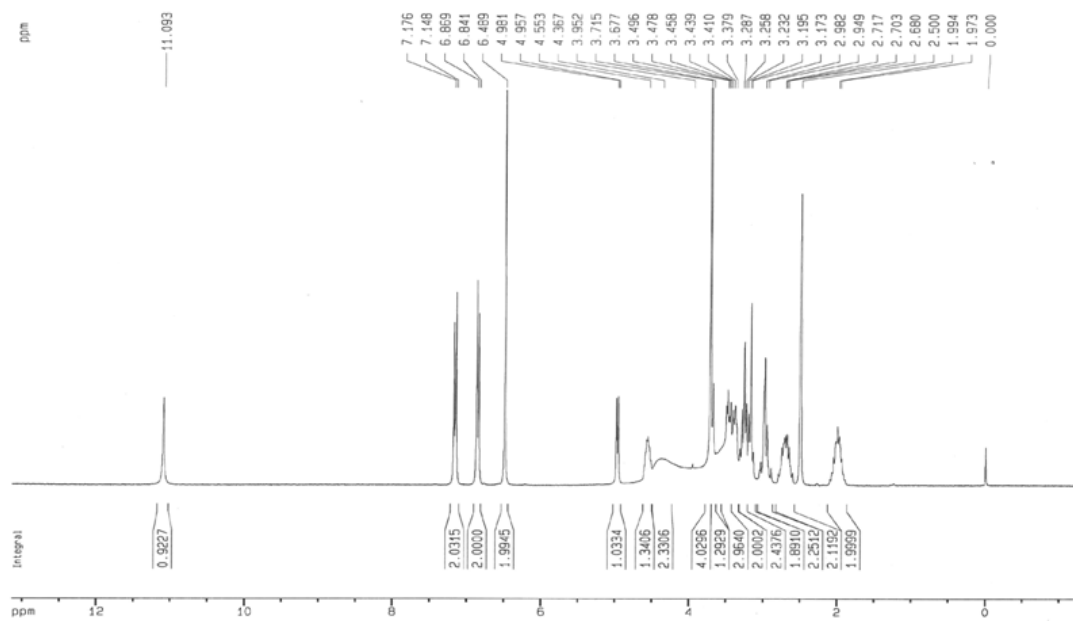
Compound Information:

Comp. NO	Identification
1	agrimonolide-6-O- β -D-glucopyranoside
2	quercetin-3-O- β -D-glucopyranoside
3	luteolin-7-O- β -D-glucoside
4	quercetin-3-O- α -L-rhampyranoside
5	(2S, 3S)-(-)-taxifolin-3-O- β -D-glucopyranoside
6	kaempferol-3-O- α -L-rhampyranoside
7	1-butanoyl-3,5-dimethyl-phlorogluciny-6-O- β -D-glucopyranoside
8	(+)-catechin
9	tiliroside
10	apigenin
11	agrimonolide
12	pilosanol C

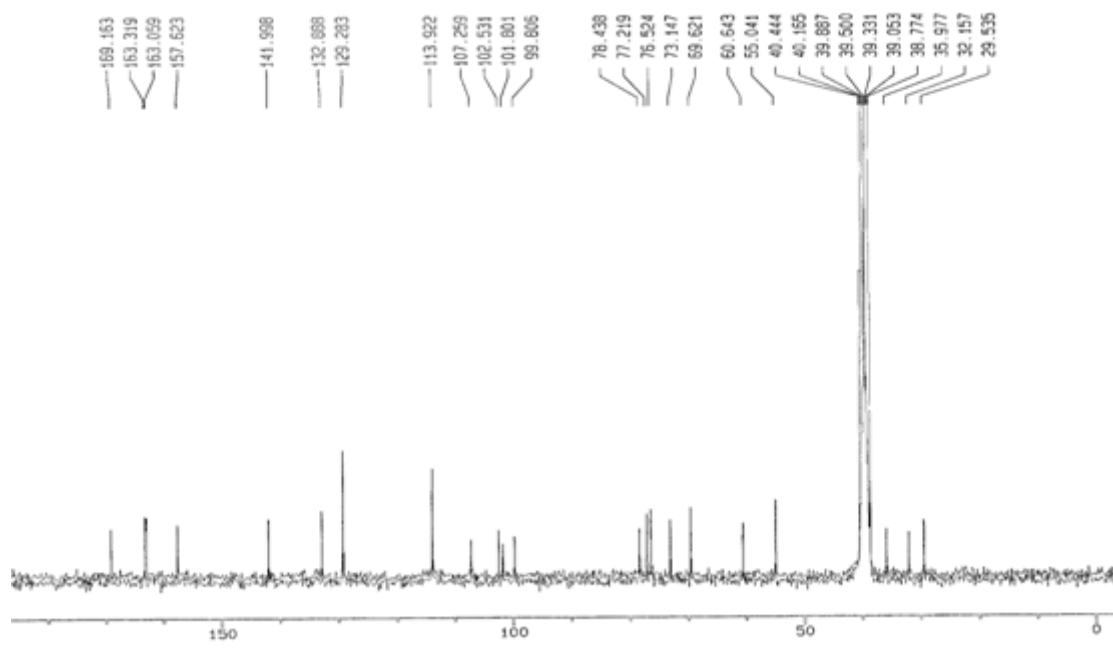
Comp. 1:



LC/MS/MS +ESI of comp.1

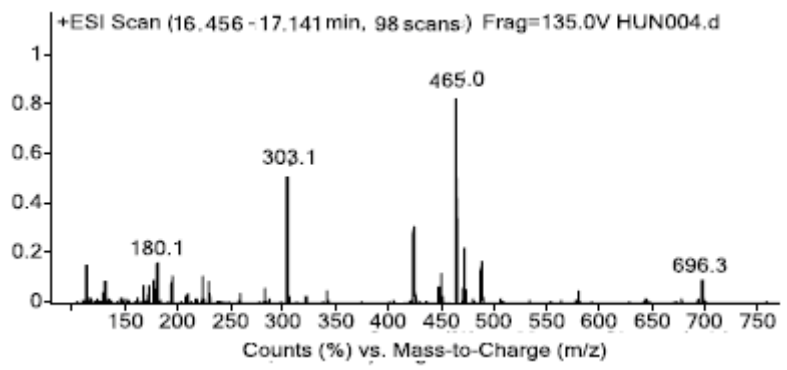


$^1\text{H-NMR}$ spectrum (in $\text{DMSO-}d_6$, 300MHz) of comp.1

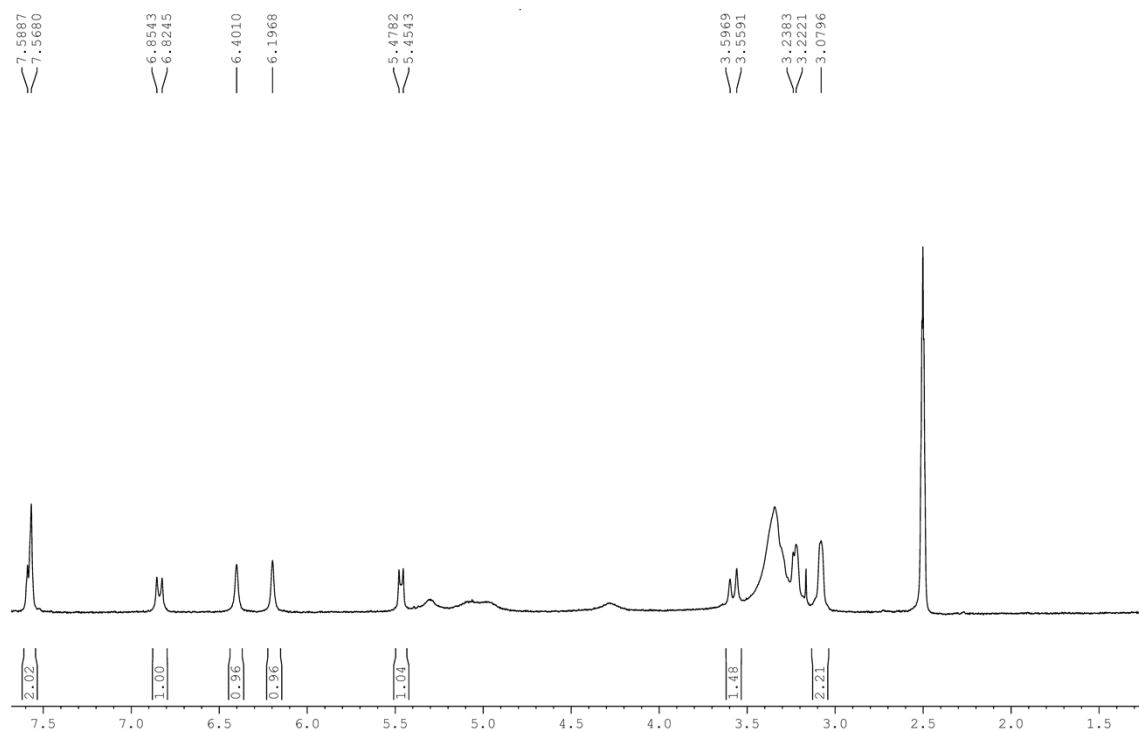


¹³C-NMR spectrum (in DMSO-*d*₆, 300 MHz) of comp.1

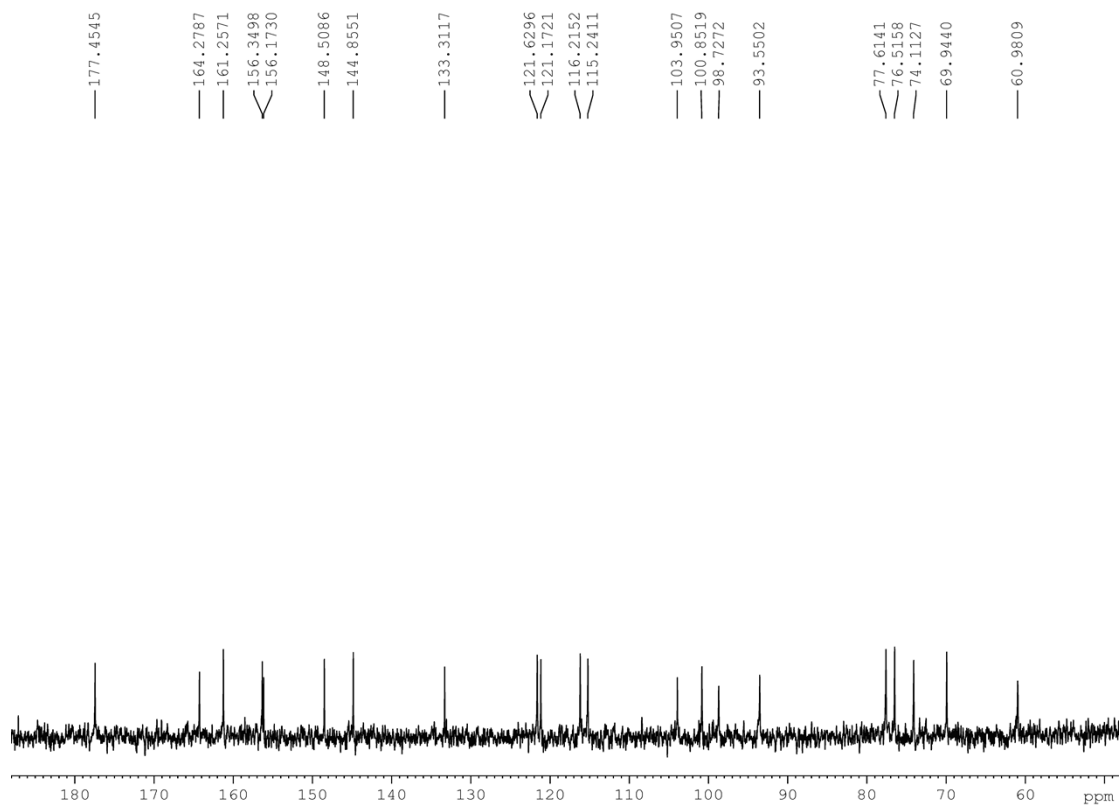
Comp.2



LC/MS/MS +ESI of comp.2

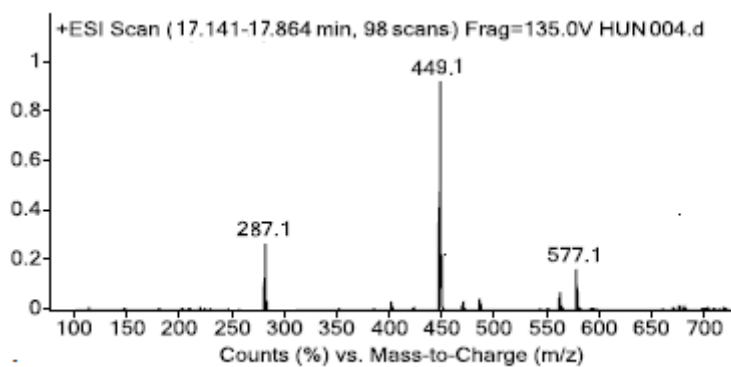


¹H-NMR spectrum (in DMSO-*d*₆, 300MHz) of comp.2

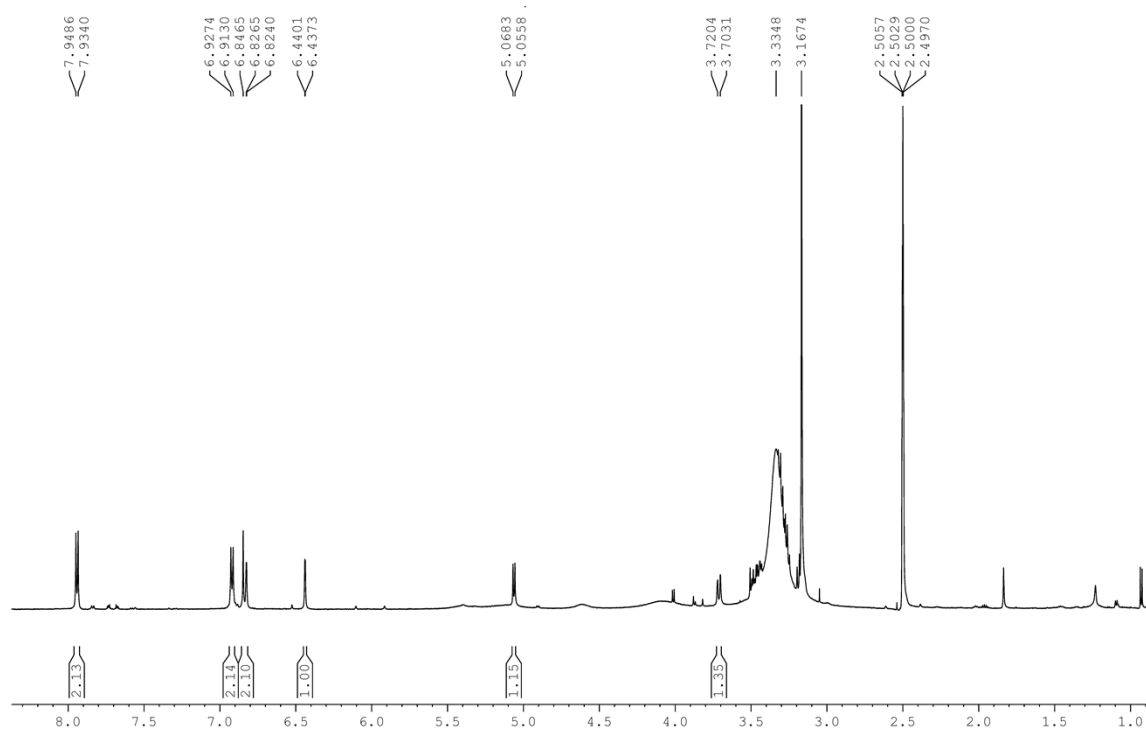


¹³C-NMR spectrum (in DMSO-*d*₆, 300MHz) of comp.2

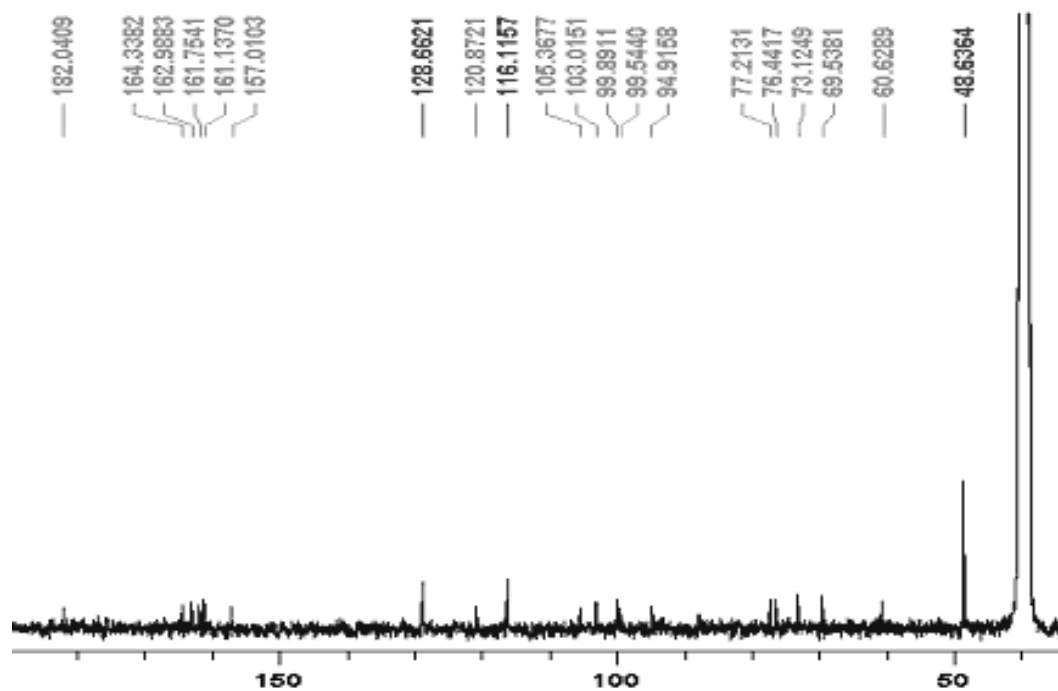
Comp.3



LC/MS/MS +ESI of comp.3

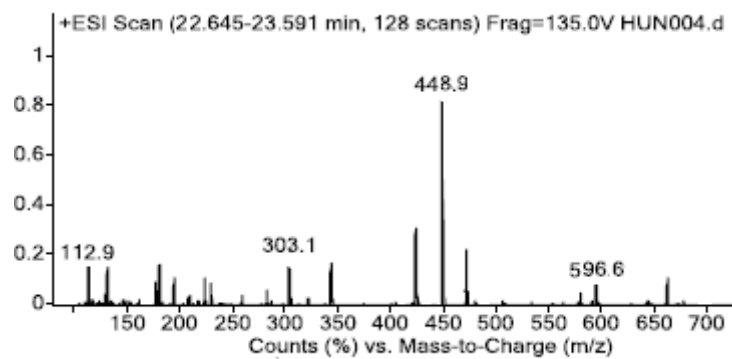


¹H-NMR spectrum (in DMSO-*d*₆, 600 MHz) of comp.3

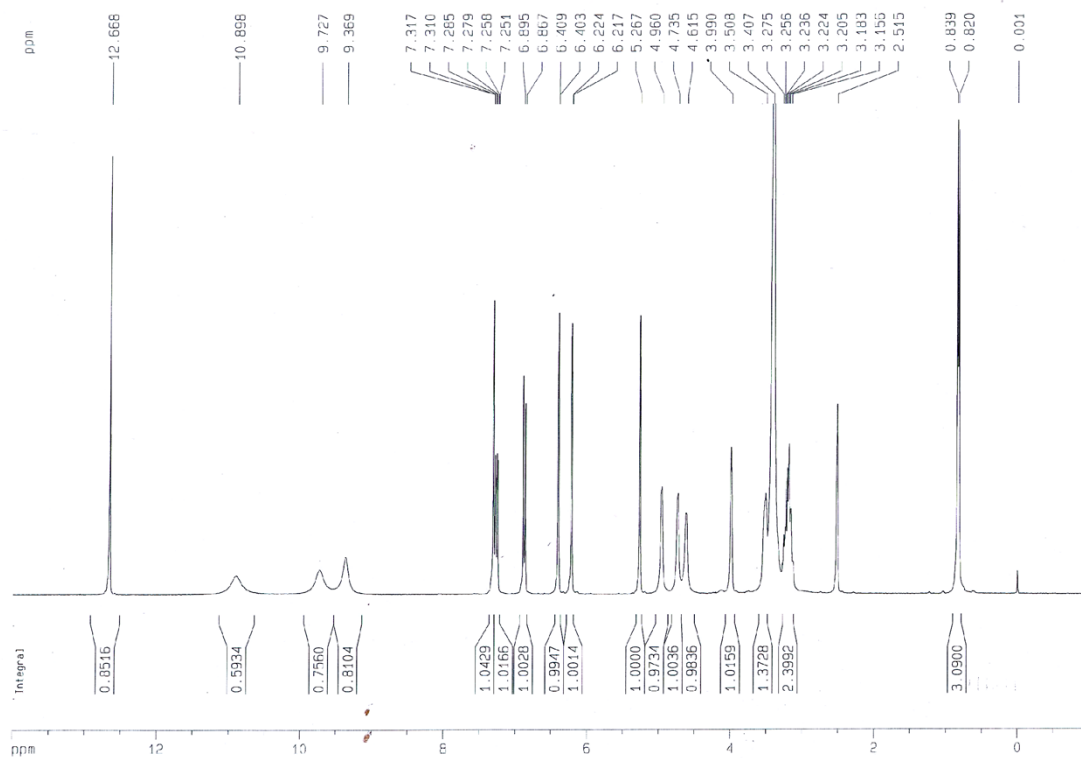


^{13}C -NMR spectrum (in $\text{DMSO-}d_6$, 600 MHz) of comp.3

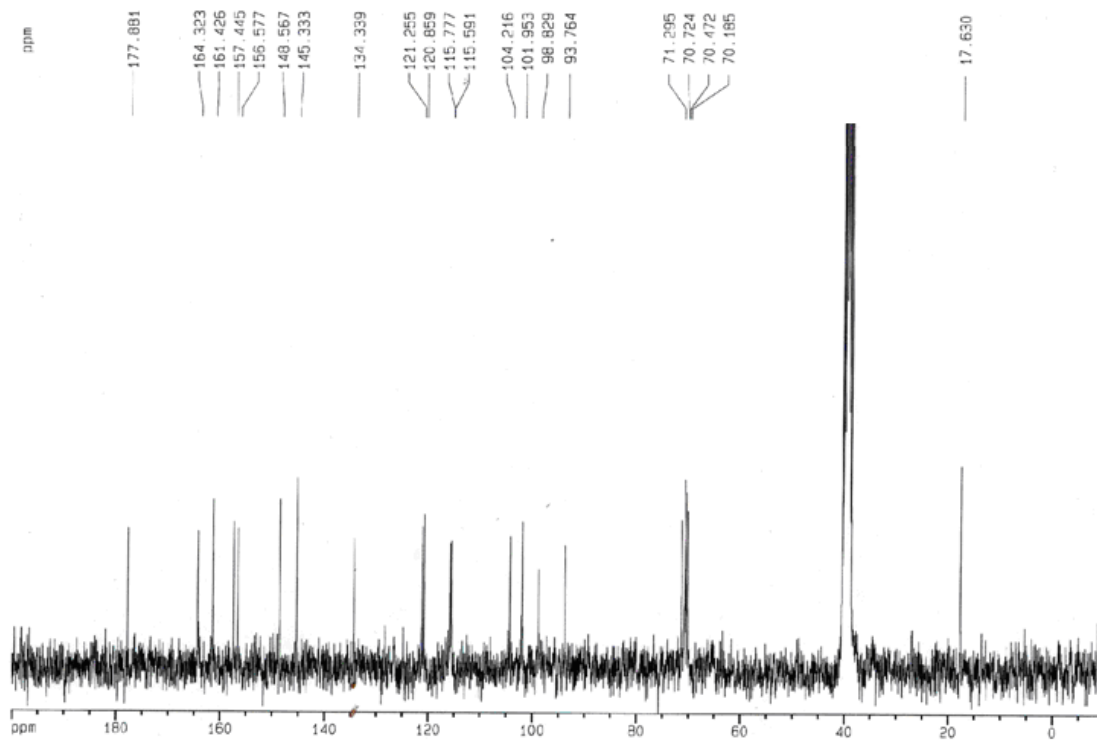
Comp. 4



LC/MS/MS +ESI of comp.4

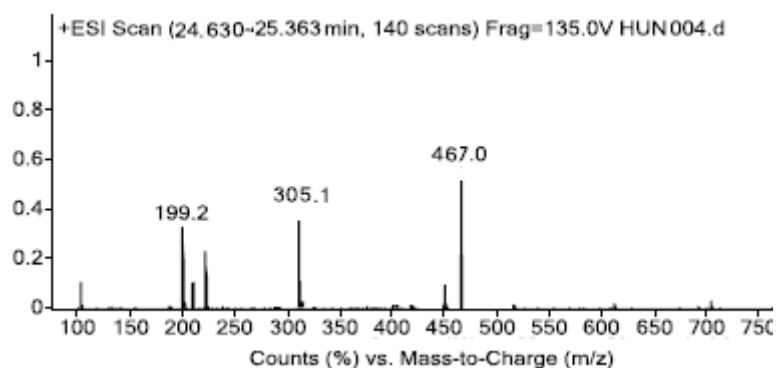


¹H-NMR spectrum (in DMSO-*d*₆, 300 MHz) of comp.4

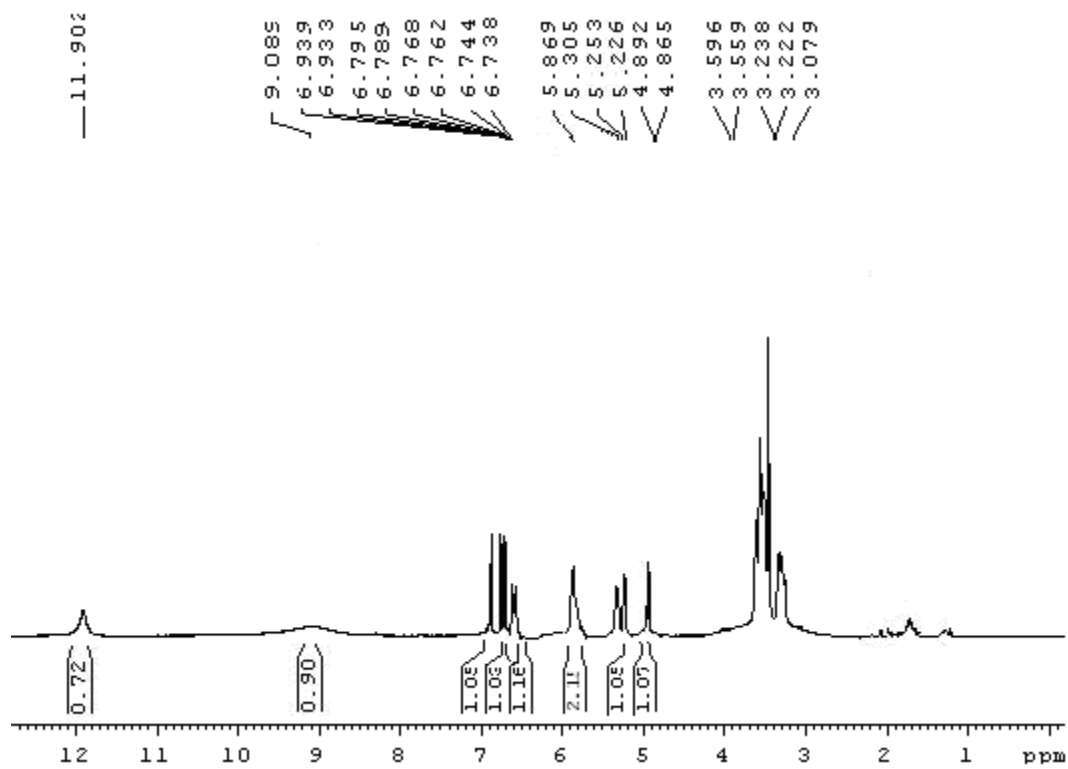


¹³C-NMR spectrum (in DMSO-*d*₆, 300 MHz) of comp. 4

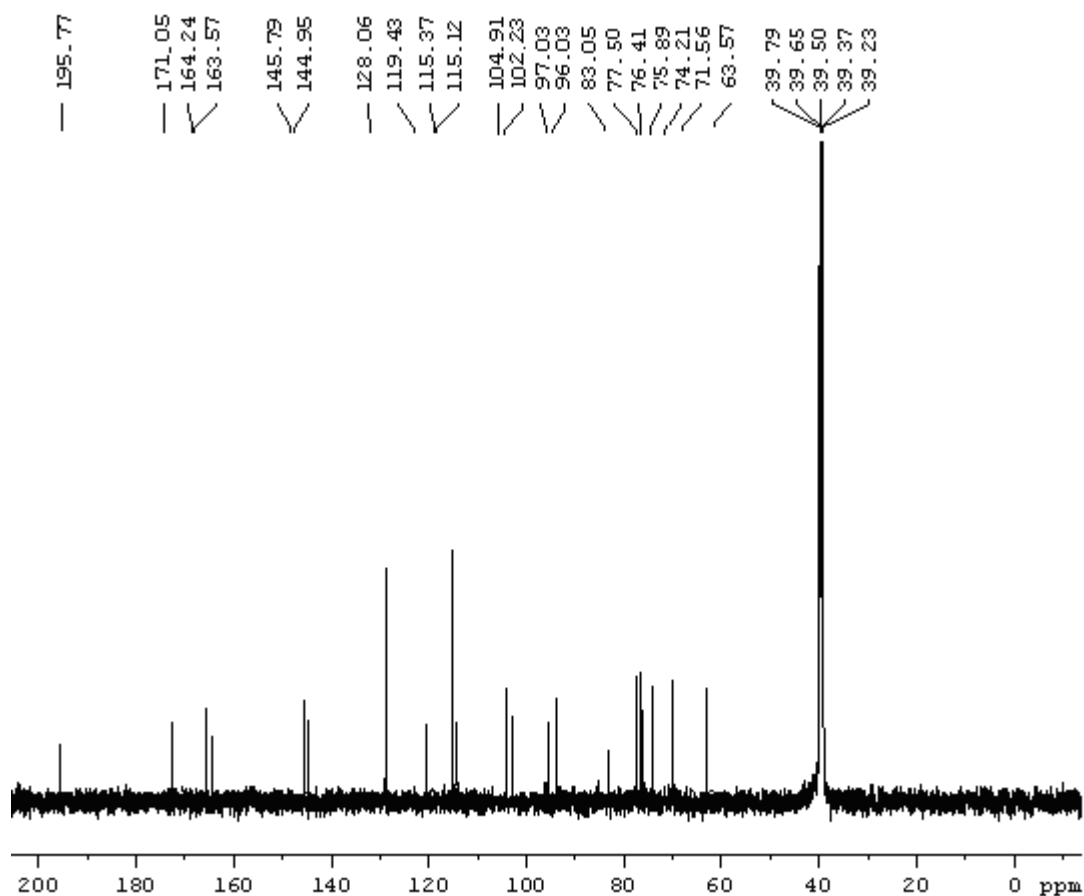
Comp.5



LC/MS/MS +ESI of comp.5

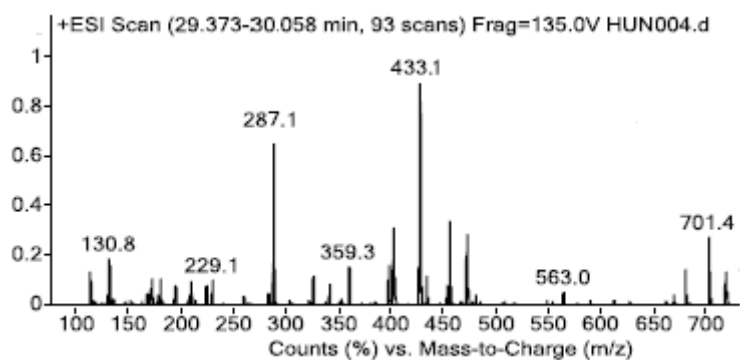


¹H-NMR spectrum (in CD₃OD, 300 MHz) of comp.5

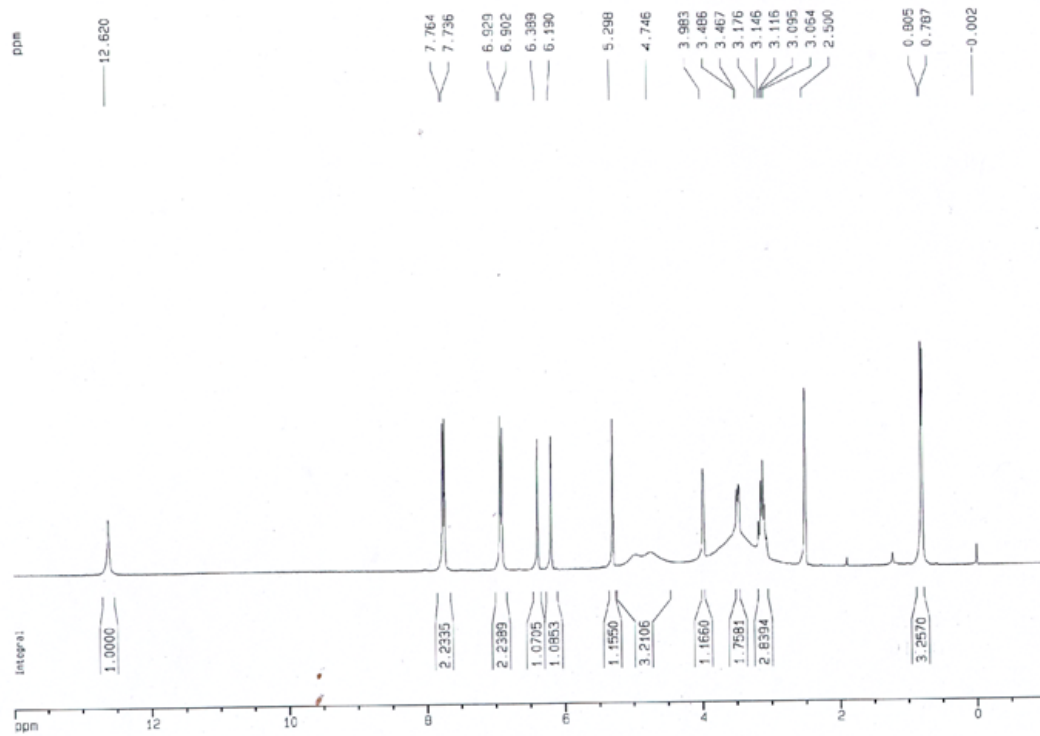


^{13}C -NMR spectrum (in CD_3OD , 300 MHz) of comp.5

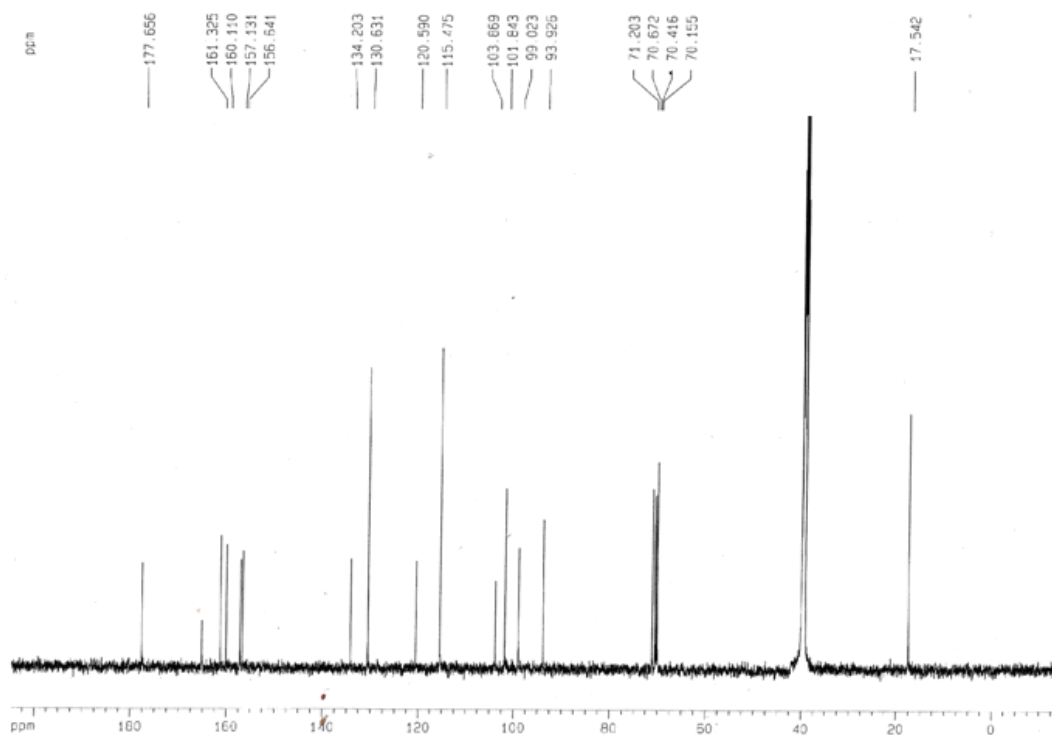
Comp.6



LC/MS/MS +ESI of comp.6

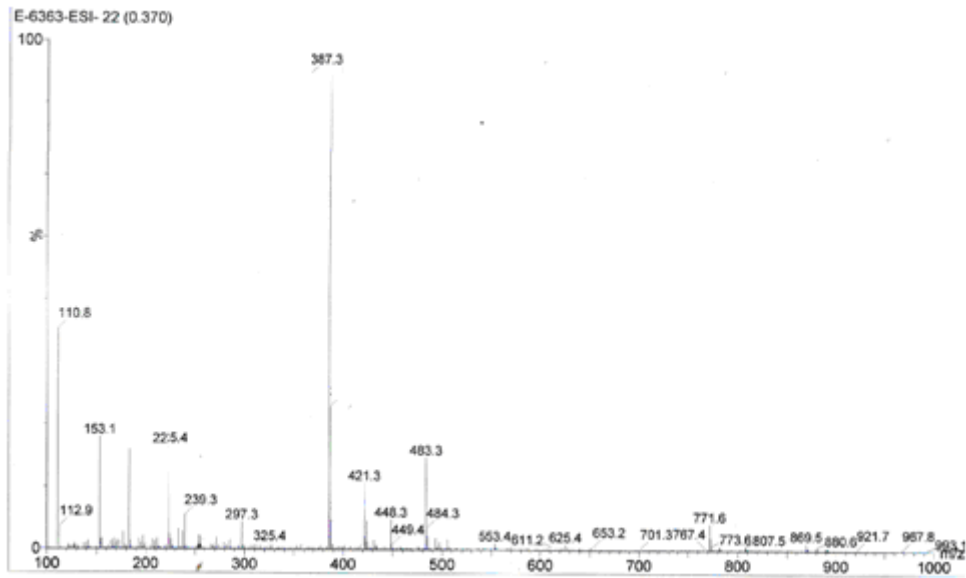


¹H-NMR spectrum (in DMSO-*d*₆, 300 MHz) of comp.6

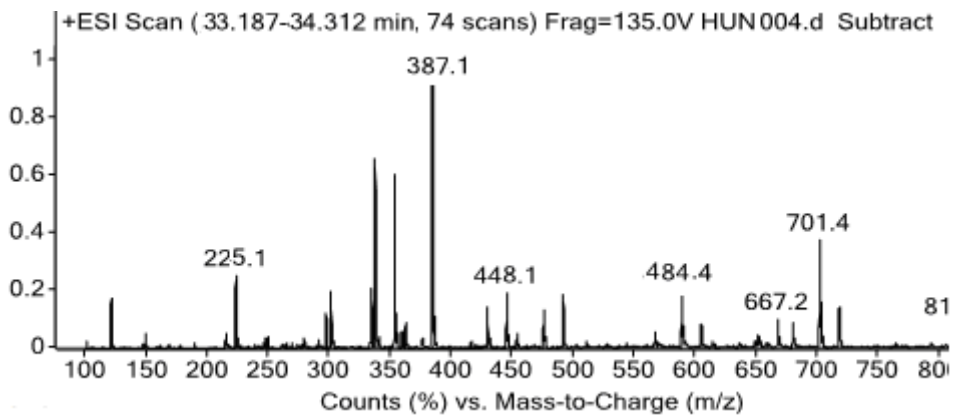


¹³C-NMR spectrum (in DMSO-*d*₆, 300 MHz) of comp.6

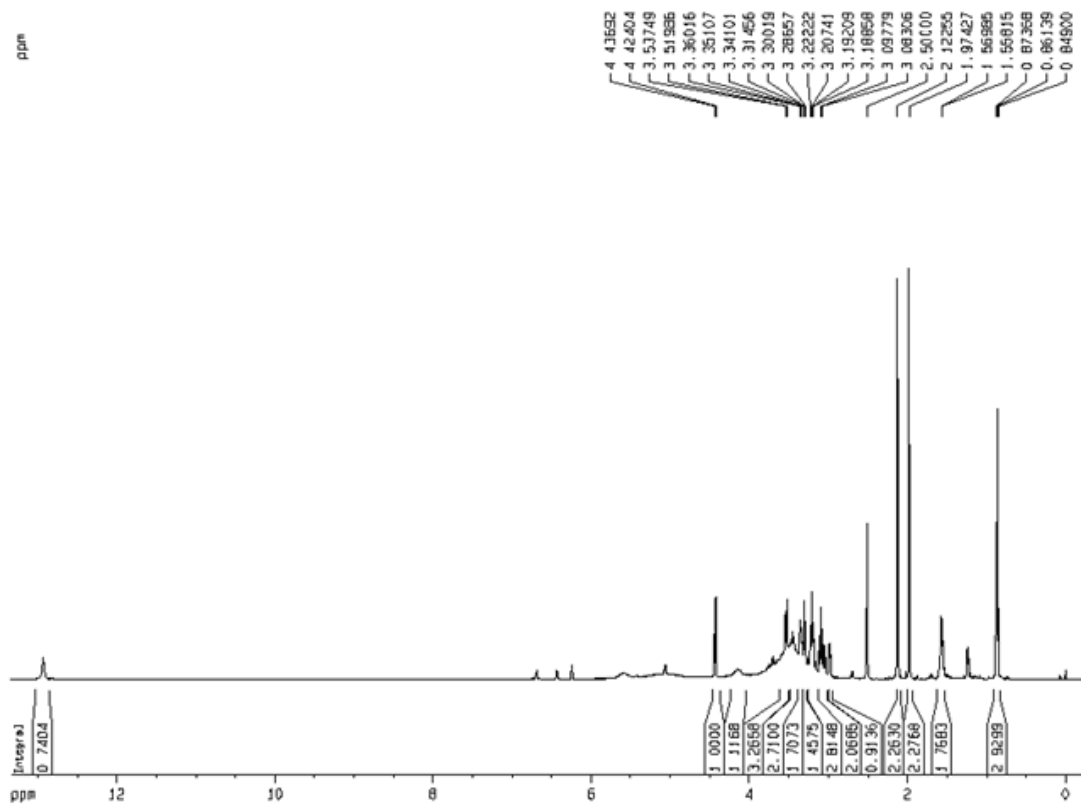
Comp. 7:



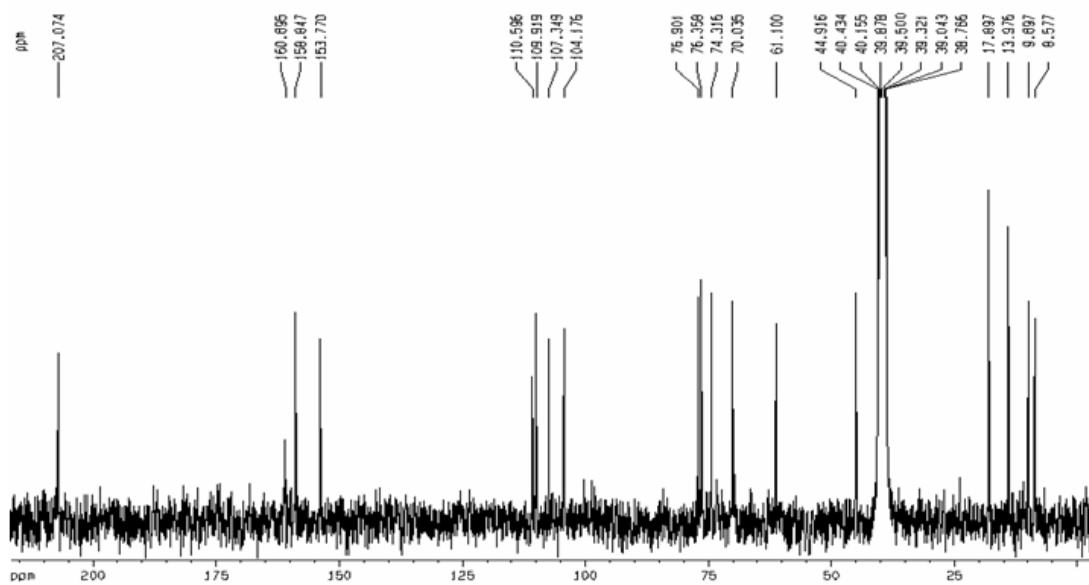
+ESI of comp.7



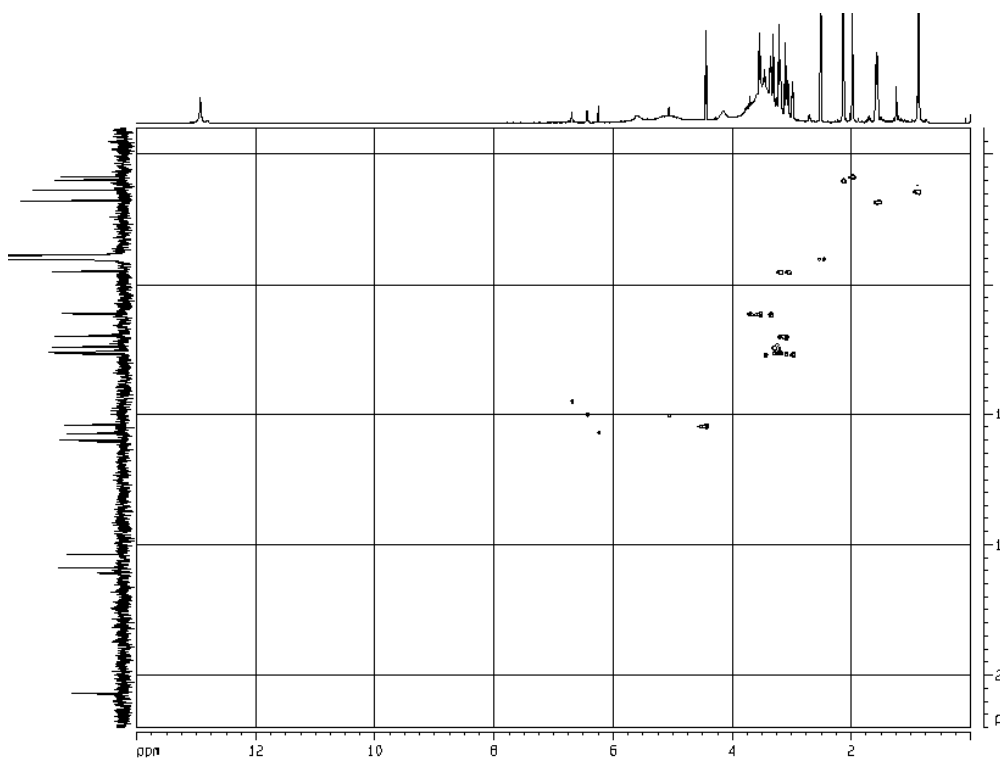
LC/MS/MS +ESI of comp.7



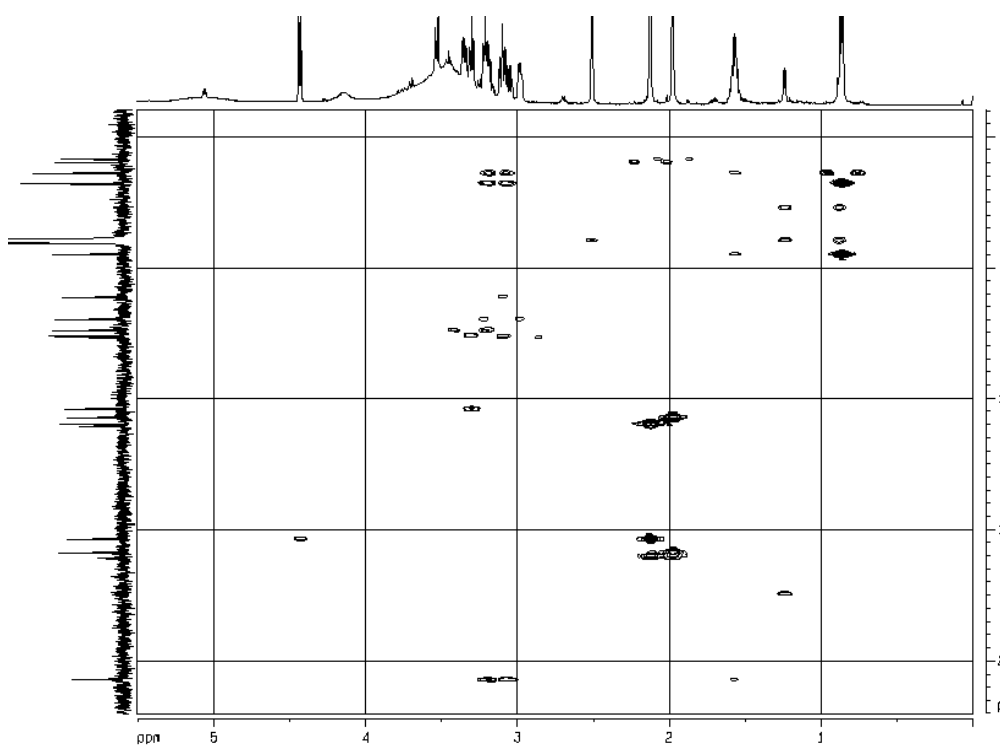
$^1\text{H-NMR}$ spectrum (in $\text{DMSO-}d_6$, 600 MHz) of comp.7



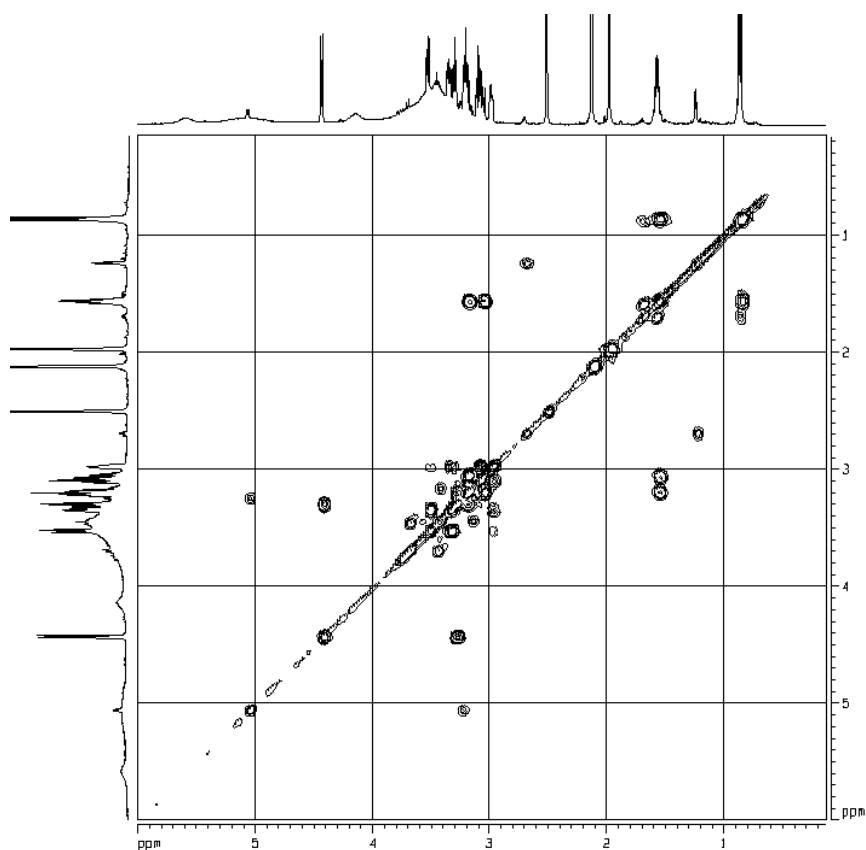
$^{13}\text{C-NMR}$ spectrum (in $\text{DMSO-}d_6$, 150 MHz) of comp.7



HSQC spectrum of comp.7

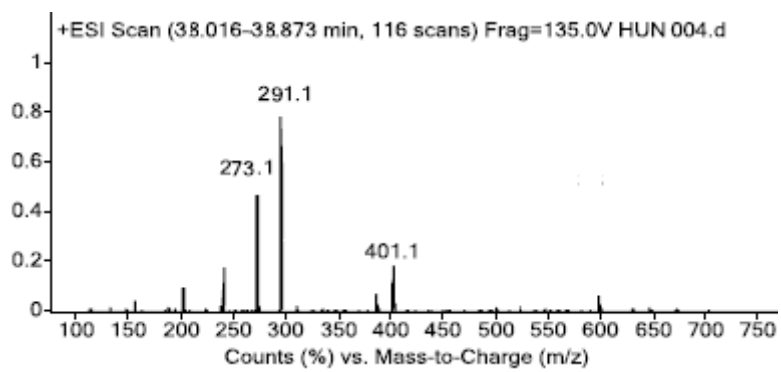


HMBC spectrum of comp.7

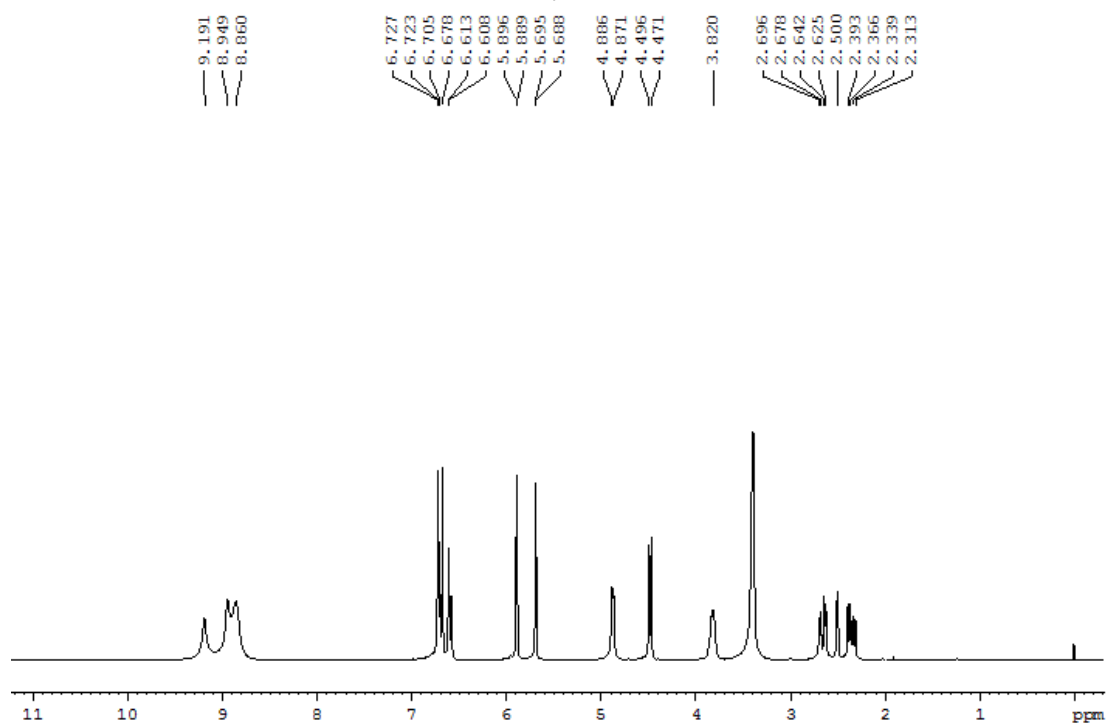


^1H - ^1H COSY spectrum of comp.7

Comp.8

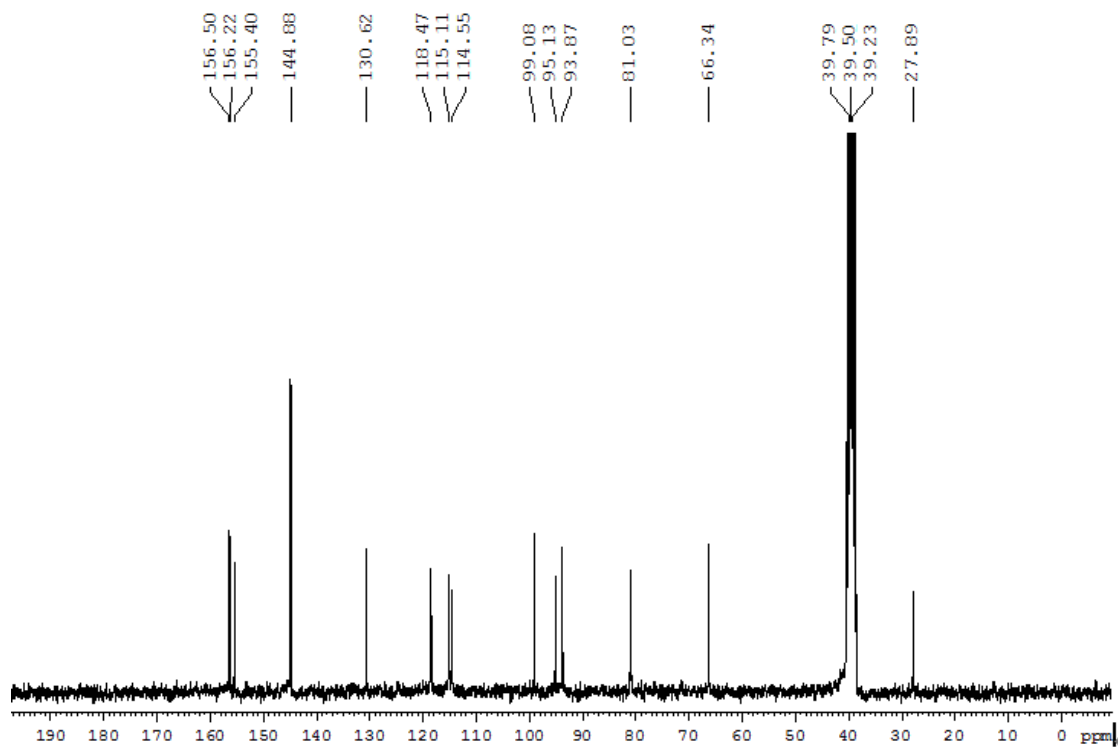


LC/MS/MS +ESI of comp.8



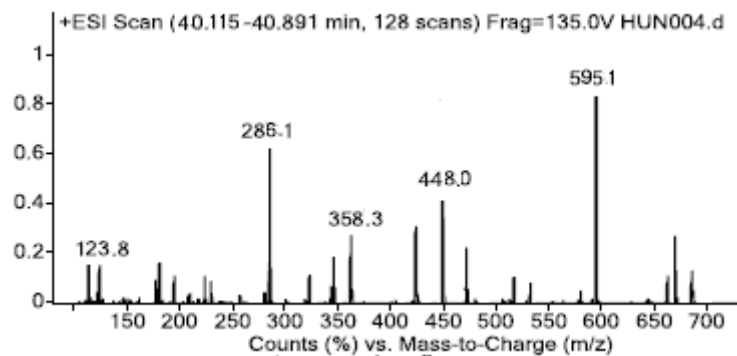
1

$^1\text{H-NMR}$ spectrum (in $\text{DMSO-}d_6$, 300 MHz) of comp. **8**

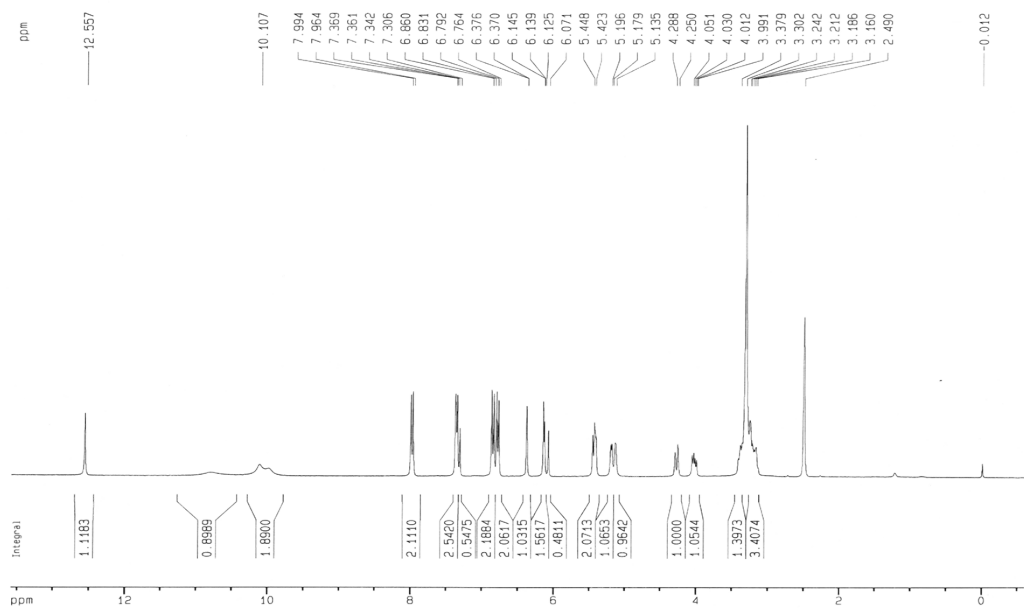


$^{13}\text{C-NMR}$ spectrum (in $\text{DMSO-}d_6$, 300 MHz) of comp. **8**

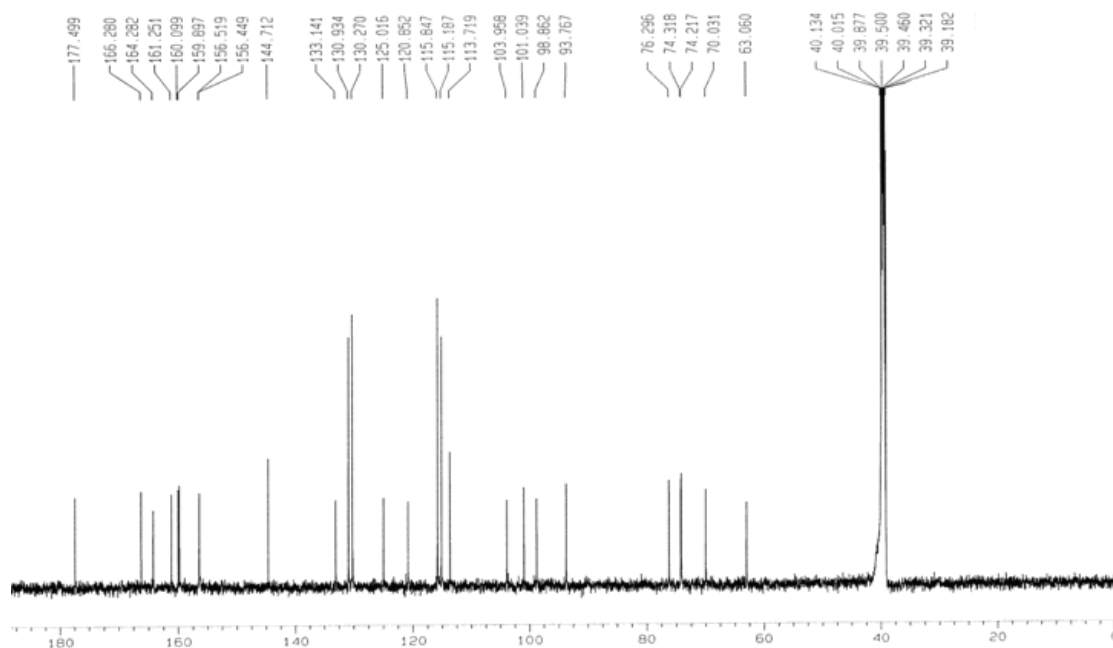
Comp.9



LC/MS/MS +ESI of comp.9

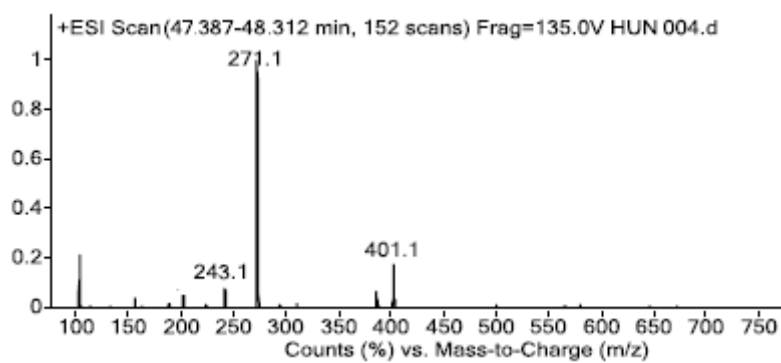


¹H-NMR spectrum (in DMSO-*d*₆, 300 MHz) of comp.9

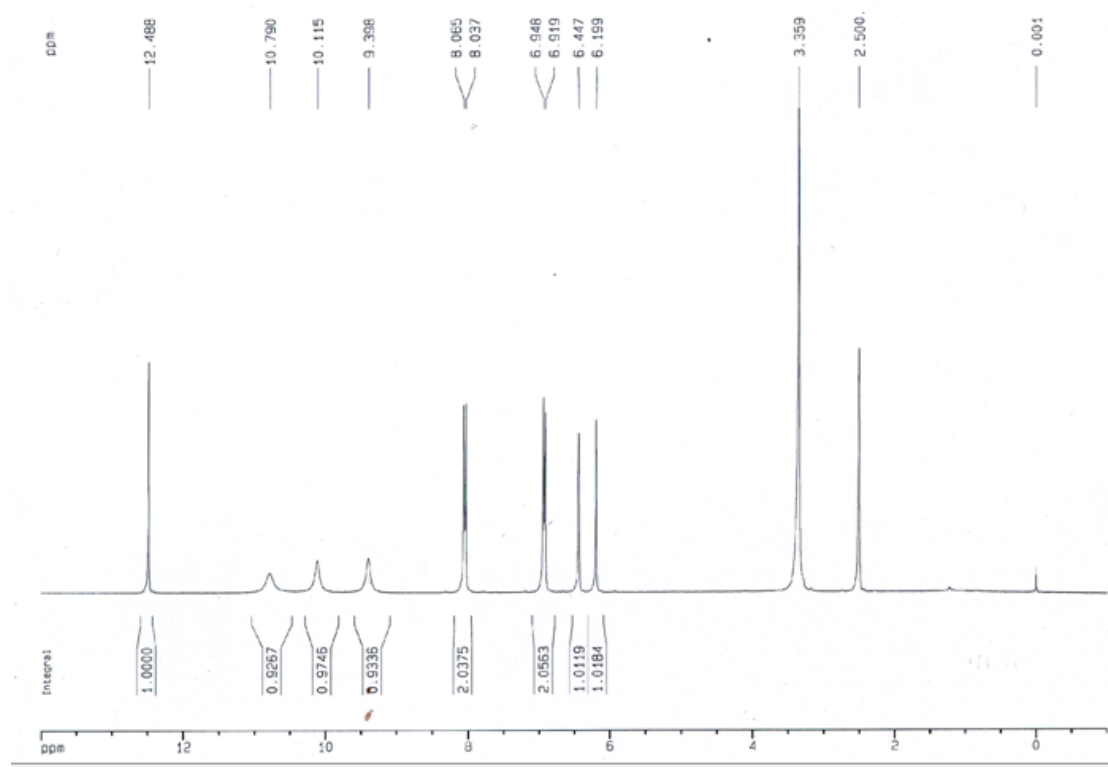


^{13}C -NMR spectrum (in $\text{DMSO-}d_6$, 150 MHz) of comp.9

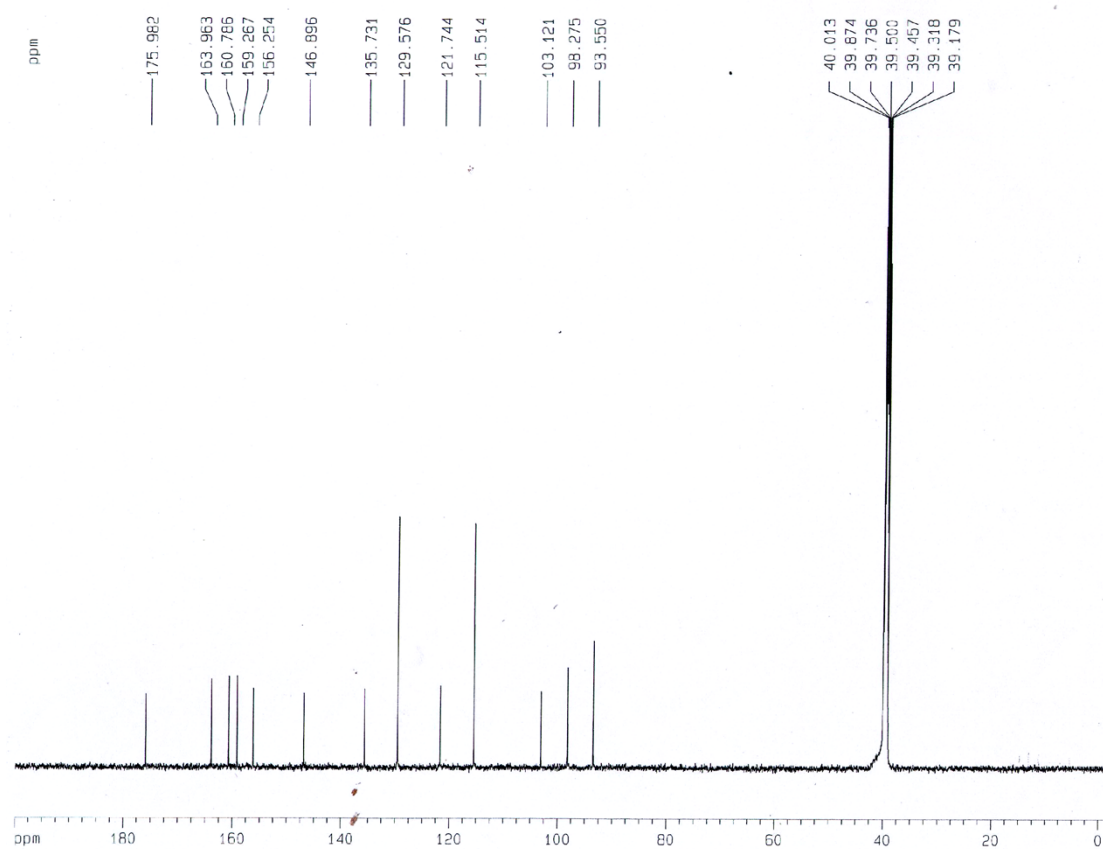
Comp.10



LC/MS/MS +ESI of comp.10

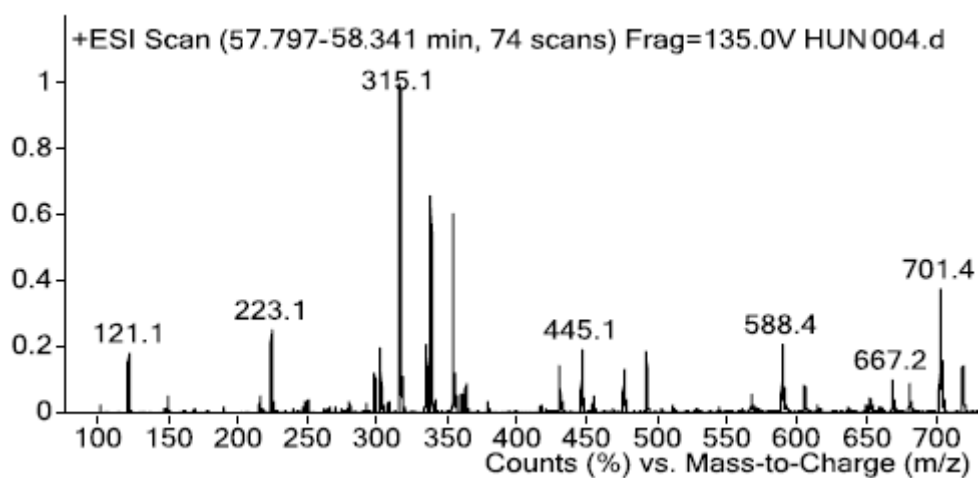


¹H-NMR spectrum (in DMSO-*d*₆, 300 MHz) of comp.10

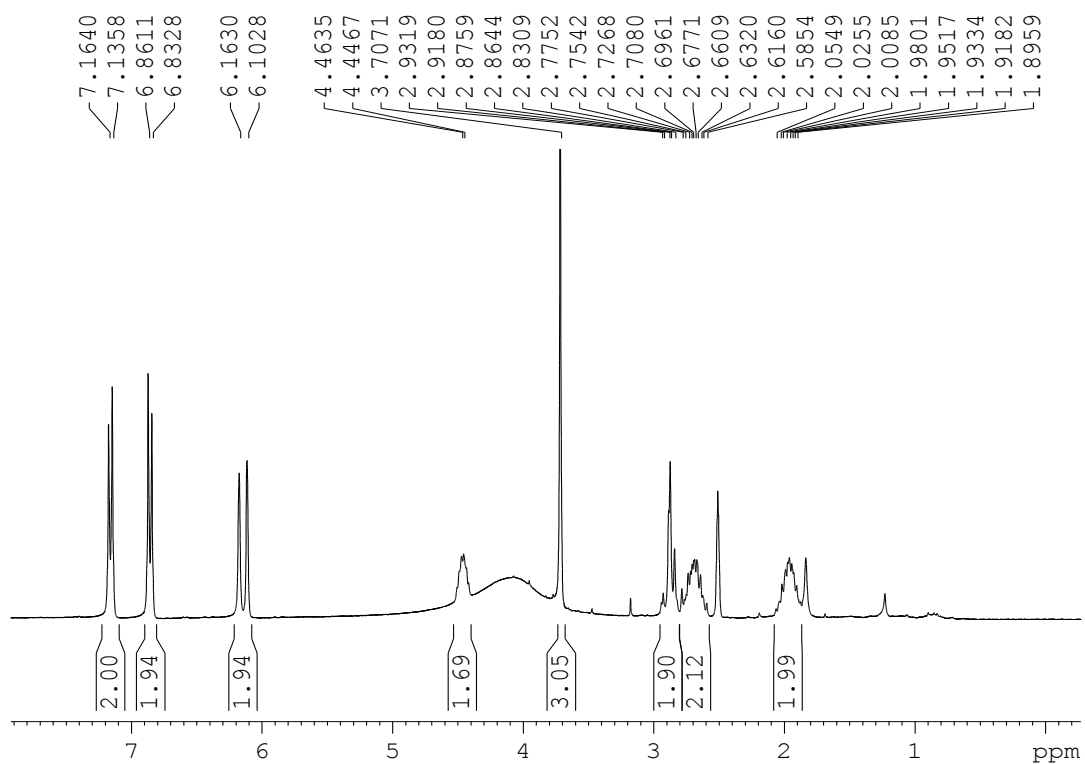


¹³C-NMR spectrum (in DMSO-*d*₆, 300 MHz) of comp.10

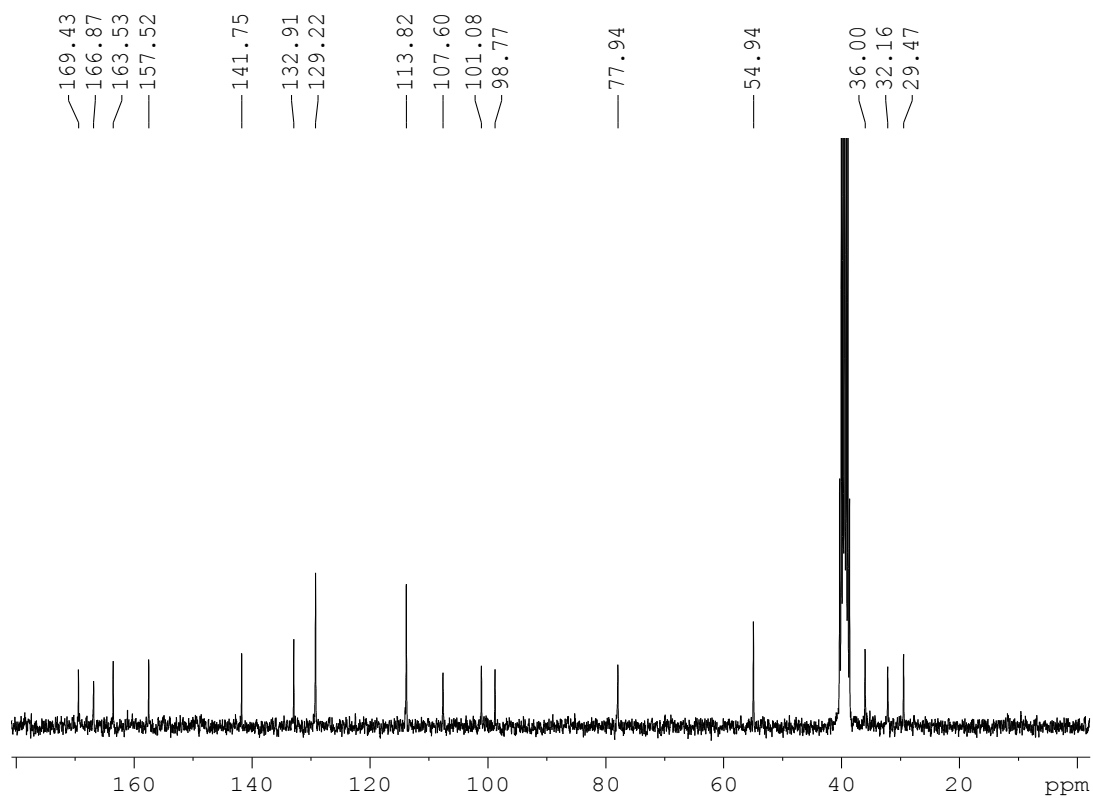
Comp.11



LC/MS/MS +ESI of comp.11

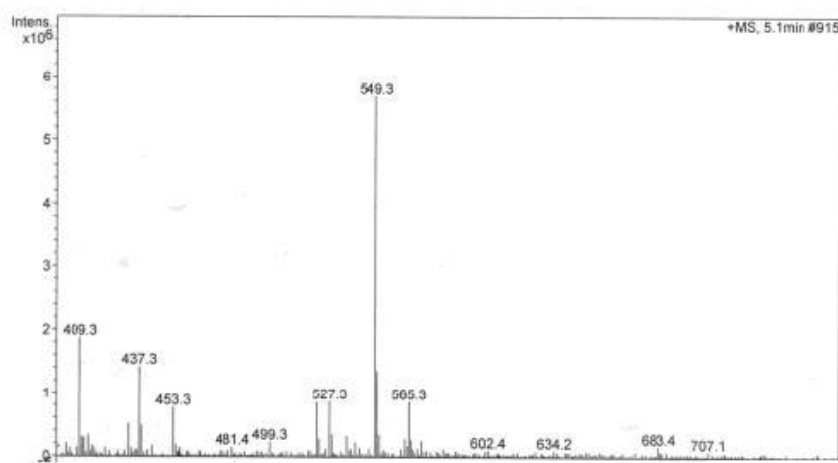


¹H-NMR spectrum (in DMSO-*d*₆, 300 MHz) of comp. **11**

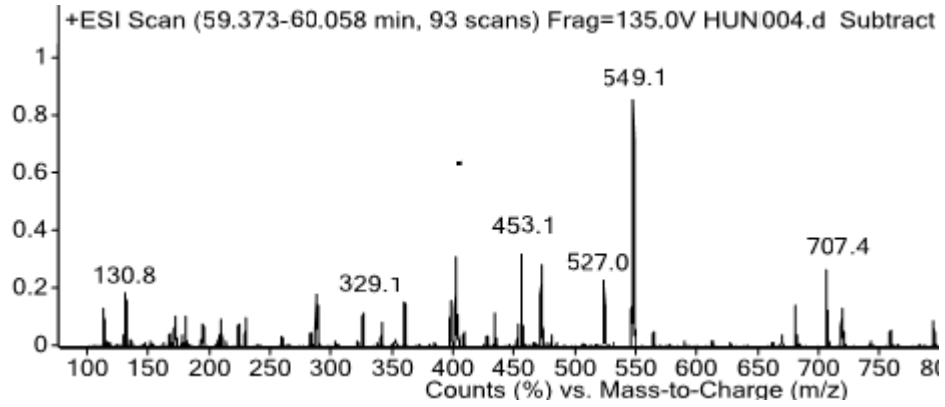


^{13}C -NMR spectrum (in $\text{DMSO-}d_6$, 150 MHz) of comp. **11**

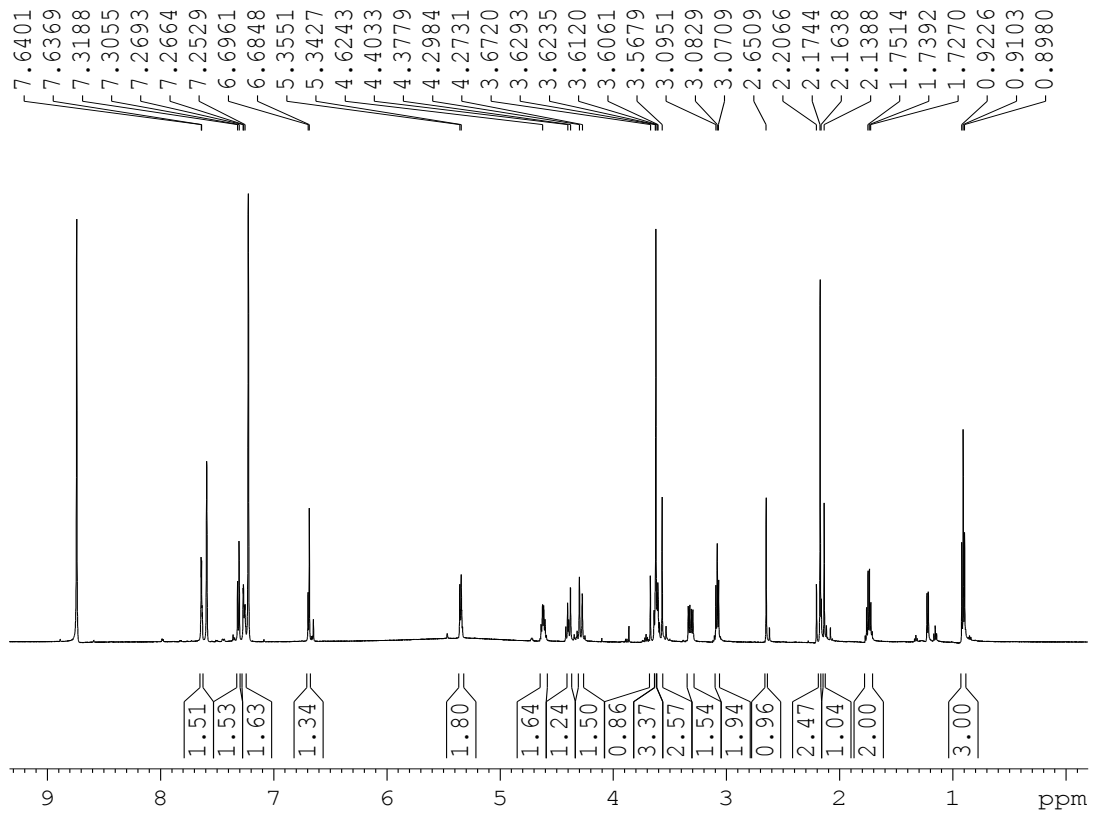
Comp.12:



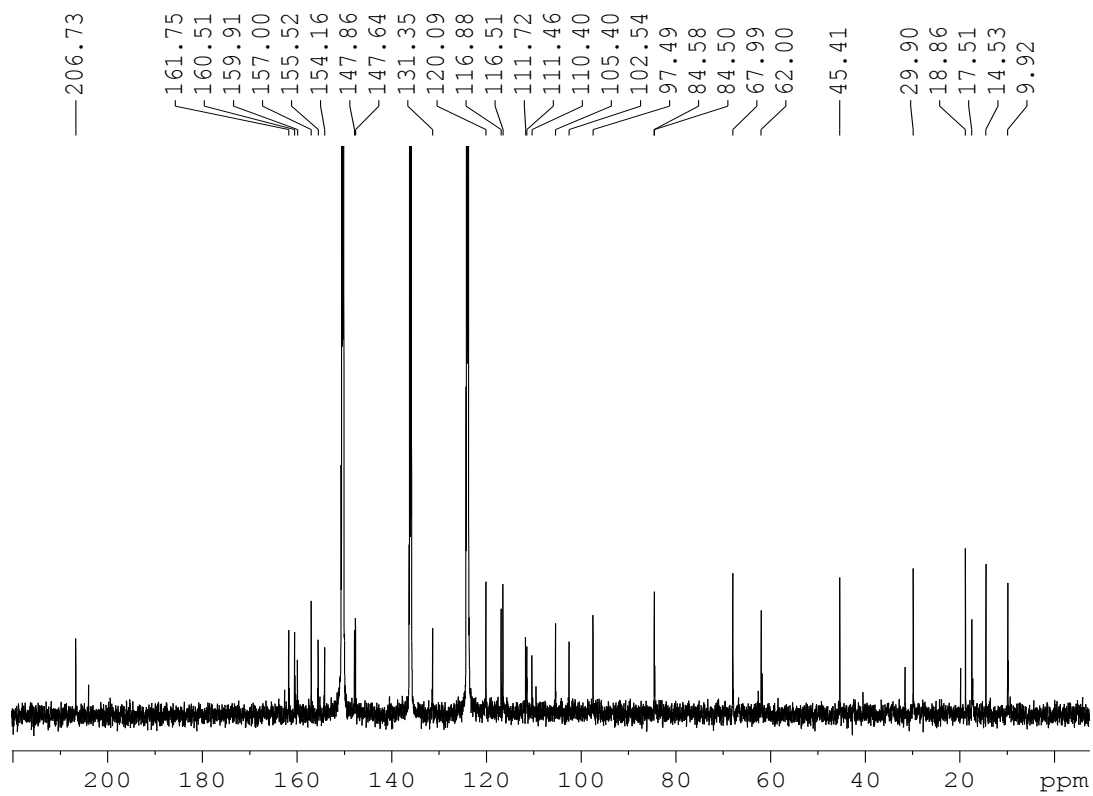
+ESI of comp. **12**



LC/MS/MS +ESI of comp.12



$^1\text{H-NMR}$ spectrum ($\text{C}_5\text{D}_5\text{N}$, 600 MHz) of comp. 12



^{13}C -NMR spectrum ($\text{C}_5\text{D}_5\text{N}$, 150 MHz) of comp. **12**