

Interaction of drugs and boron clusters with new silica matrices containing the phosphatidylcholine headgroup

Ping Fan^a, Stefan Stolte^b, Detlef Gabel^{b,c*}

a: Department of Chemistry, University of Bremen

b: Center for Environmental Research and Sustainable Technology, University of Bremen, Germany

c: School of Engineering and Science, Jacobs University Bremen, Germany

*: Campus Ring 1, D-28759 Bremen, Germany, d.gabel@jacobs-university.de, Tel. +49 421 200 3585, Fax +49 421 200 3249.

Supplementary data

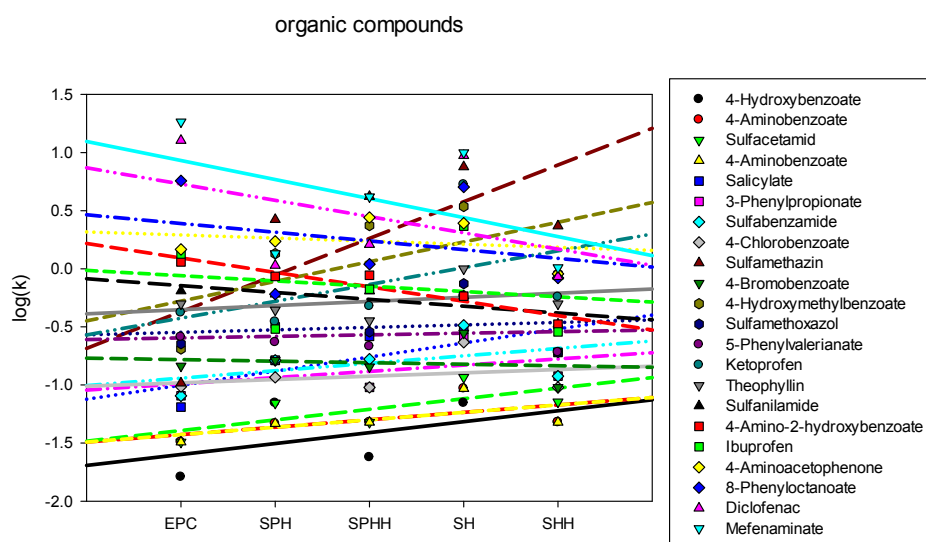


Figure S1. $\log(k)$ values for organic compounds on the different matrices. The lines are lines indicating the trend when moving from EPC to other matrices. Their colors are identical to the colors of the symbols.

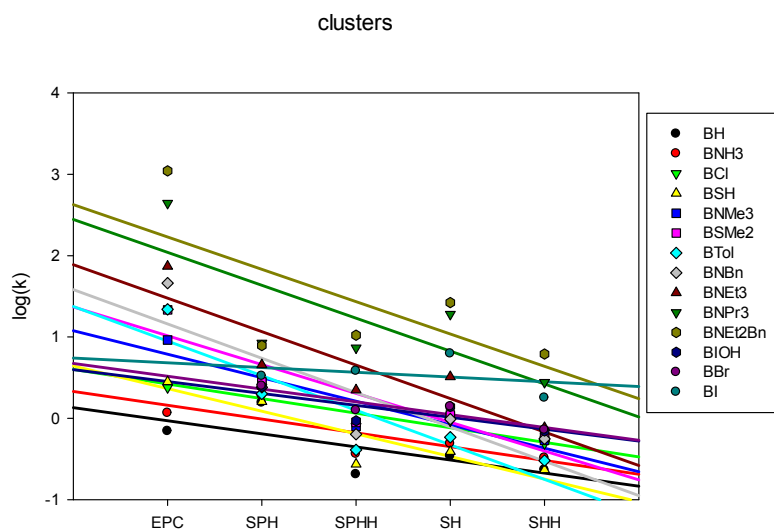


Figure S2. $\log(k)$ values for boron clusters on the different matrices. The lines are lines indicating the trend when moving from EPC to other matrices. Their colors are identical to the colors of the symbols.