

### Supplementary data 1

In MS conditions, the Dwell value could influence the response of the analytes, and using segment detection method can increased the Dwell value. In this study, we compared the chromatograms of no segment detection method and segment detection method used for analysis the same sample (Fig.1), segment detection method was finally selected due to its high response of the analytes.

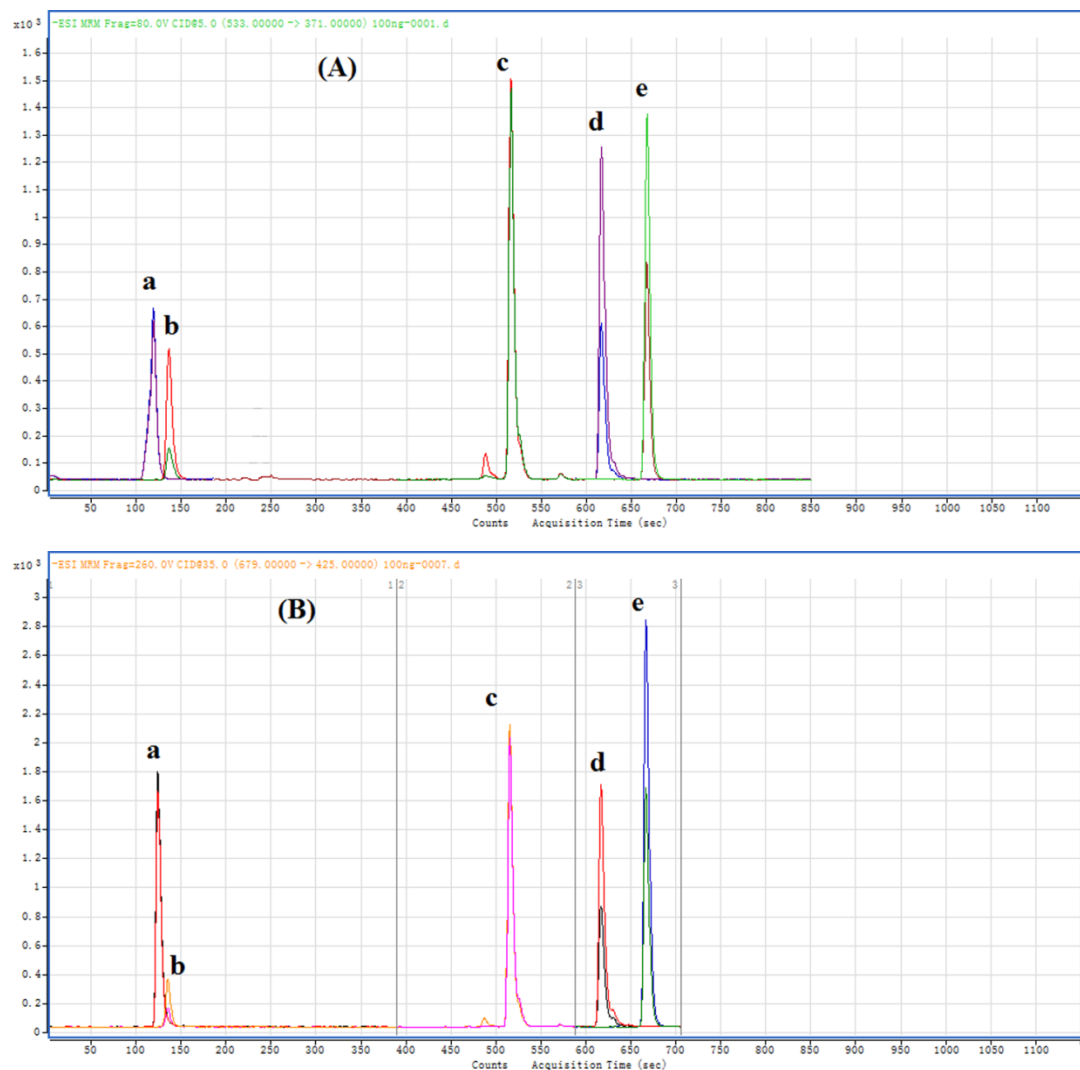


Fig. 1. Representative MRM chromatograms of polygalaxanthone III (a), tenuifolin (b), tenuifoliside A (c), tenuifoliside C (d) and IS (e) in rat plasma. (A) No segment detection method; (B) Segment detection method.