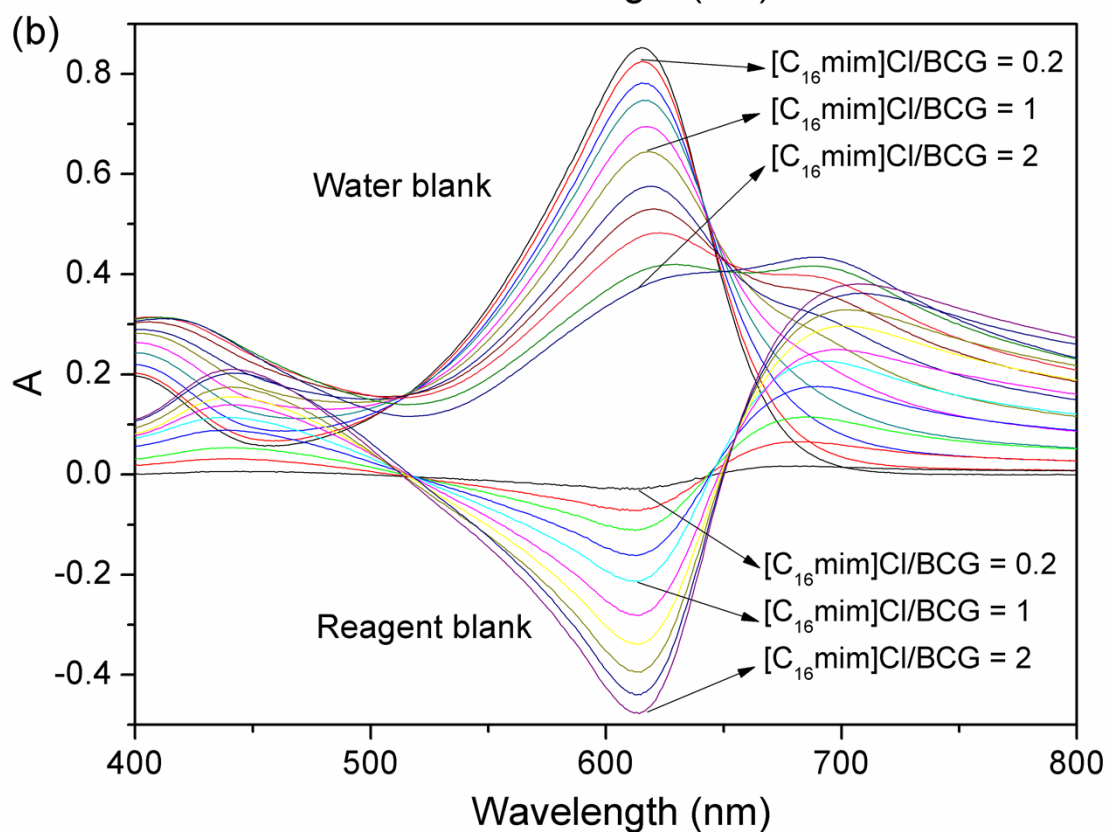
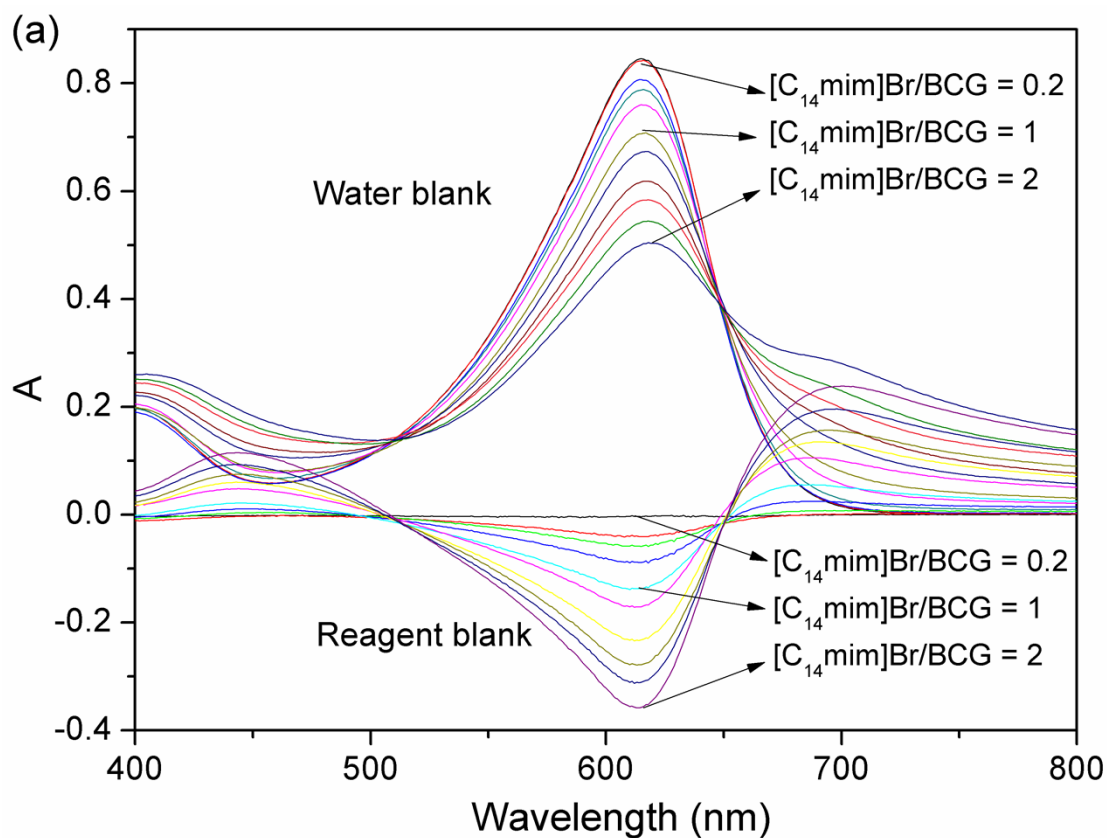
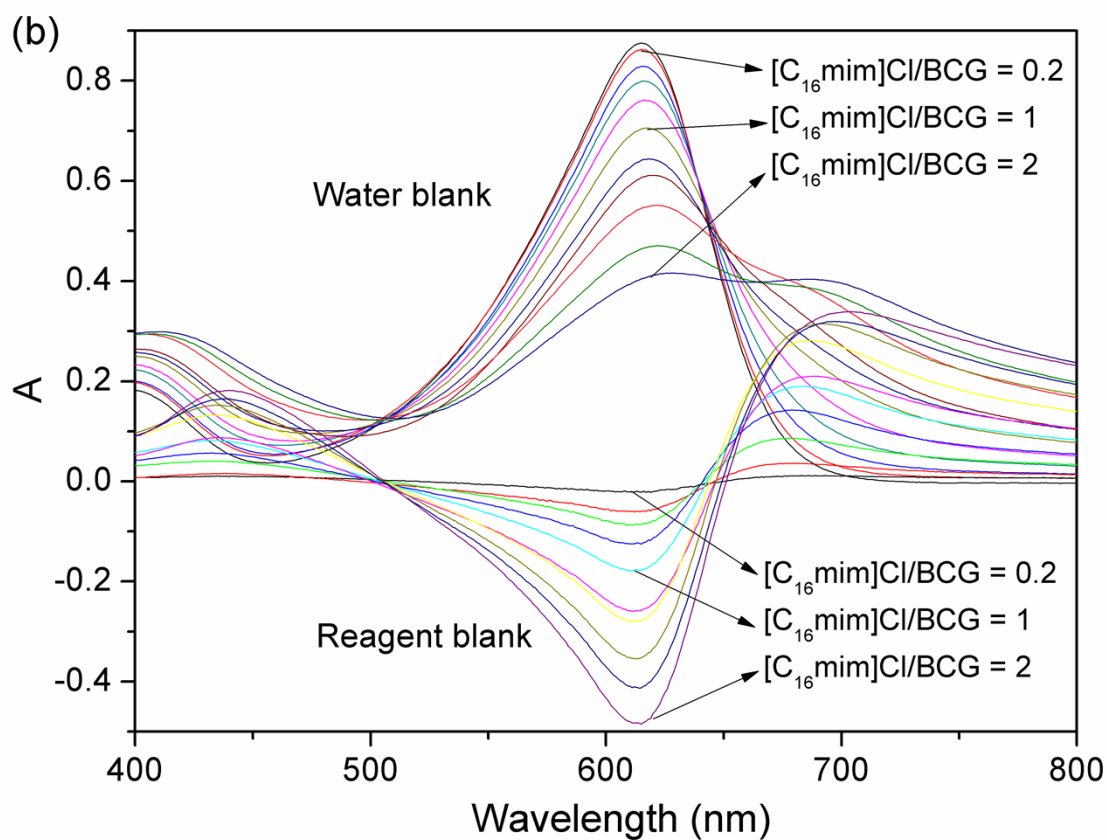
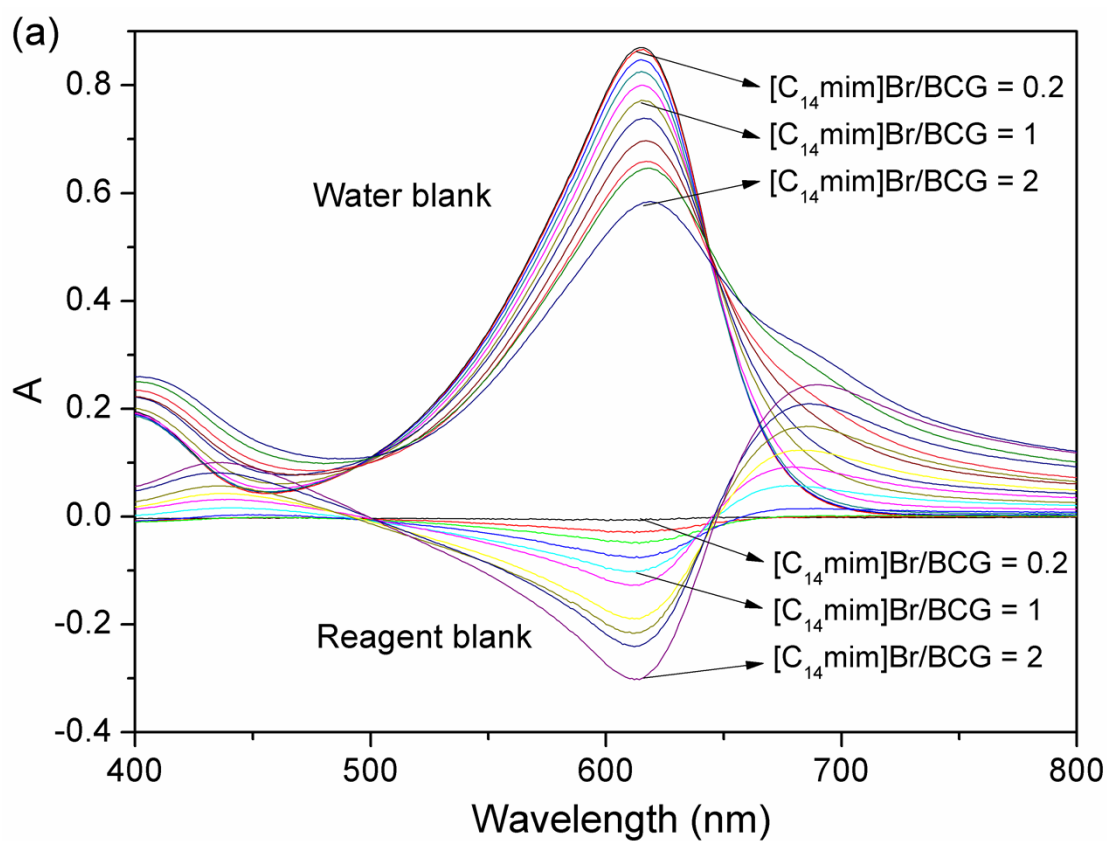


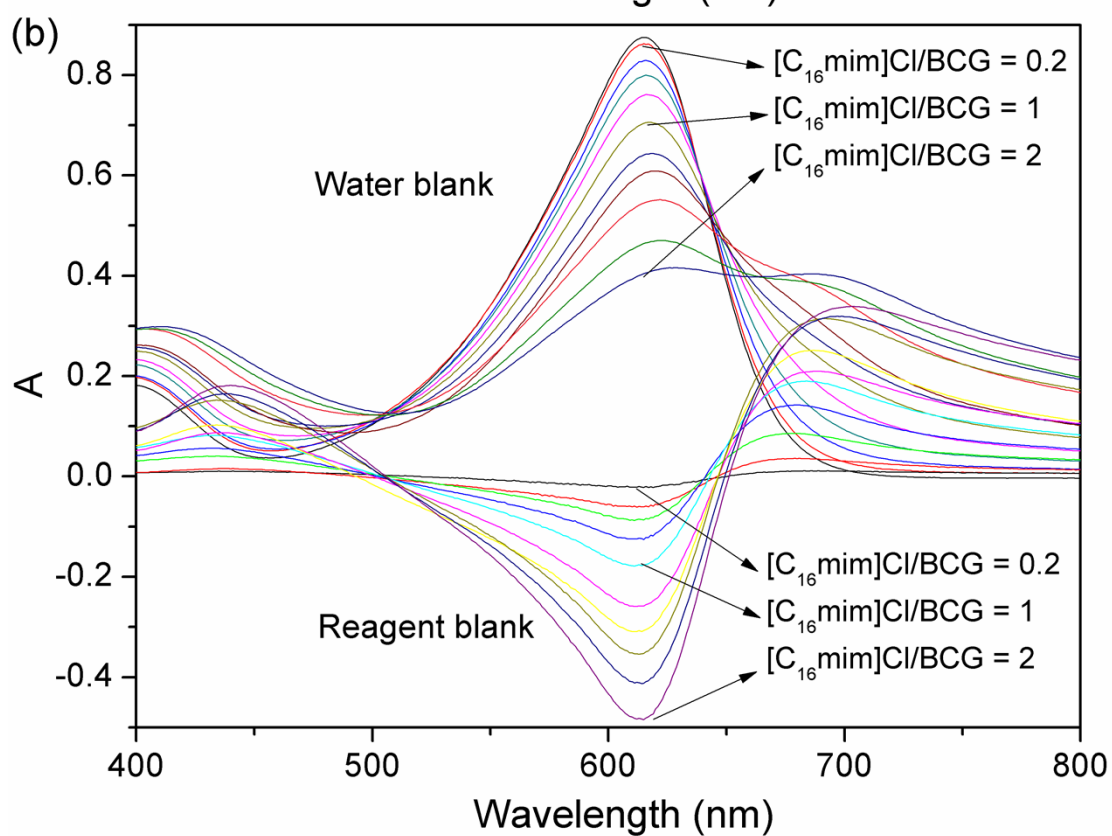
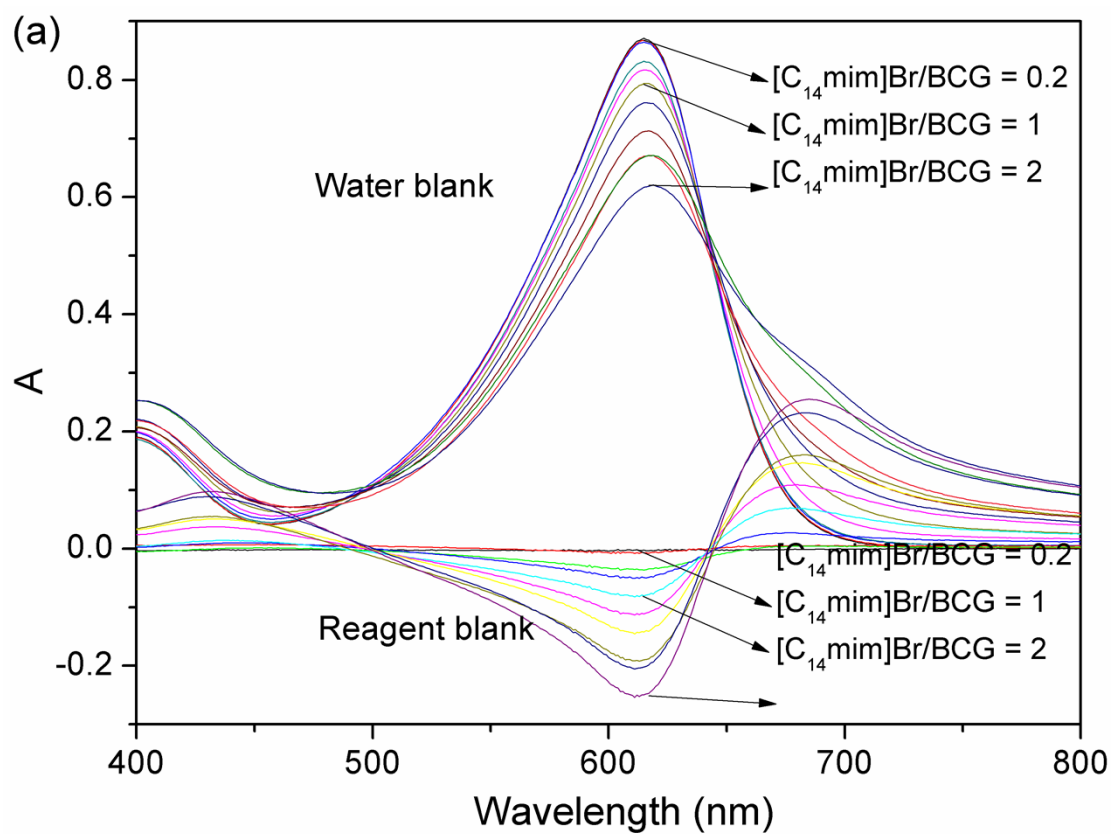
The absorption spectra of (a) BCG- $[C_{14}\text{mim}]\text{Br}$  system; (b) BCG- $[C_{16}\text{mim}]\text{Cl}$  system. Acetate buffer, pH = 5;  $C_{\text{BCG}} = 0.2 \times 10^{-4} \text{ mol L}^{-1}$ ;  $C_{[C_{14}\text{mim}]\text{Br}}$  or  $C_{[C_{16}\text{mim}]\text{Cl}}$  ranged from 0 to  $0.4 \times 10^{-4} \text{ mol L}^{-1}$ .



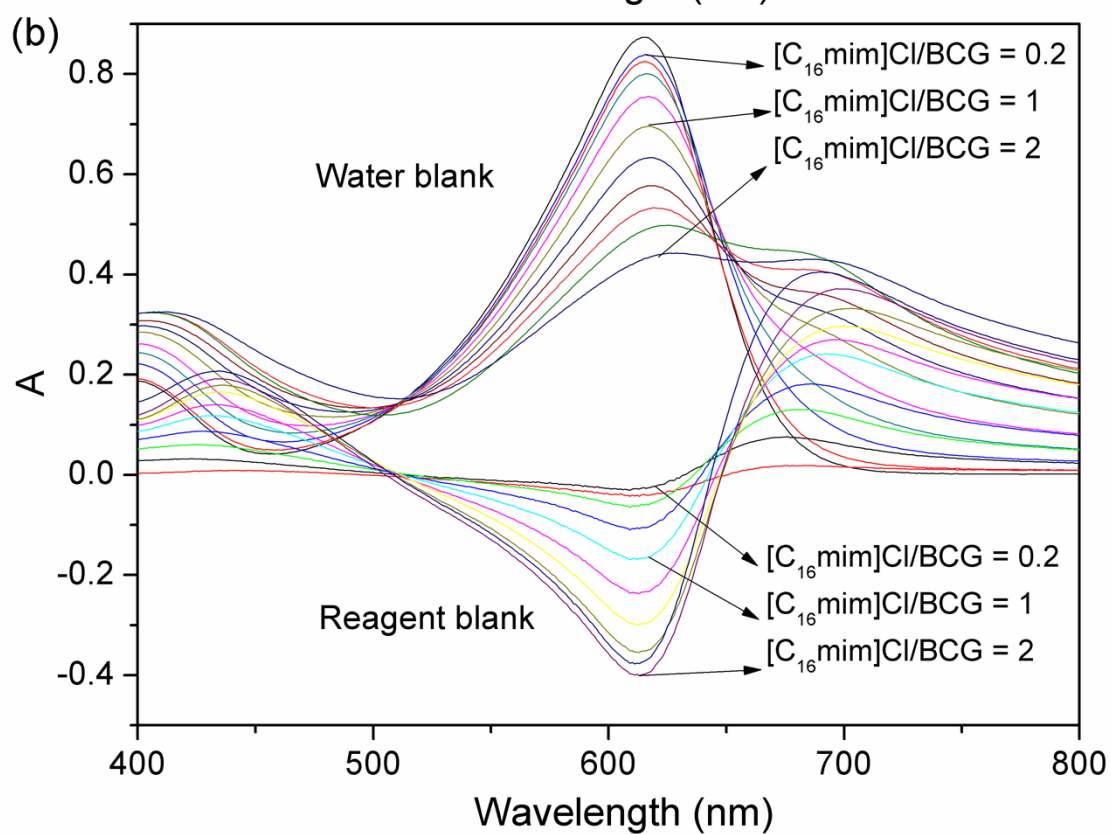
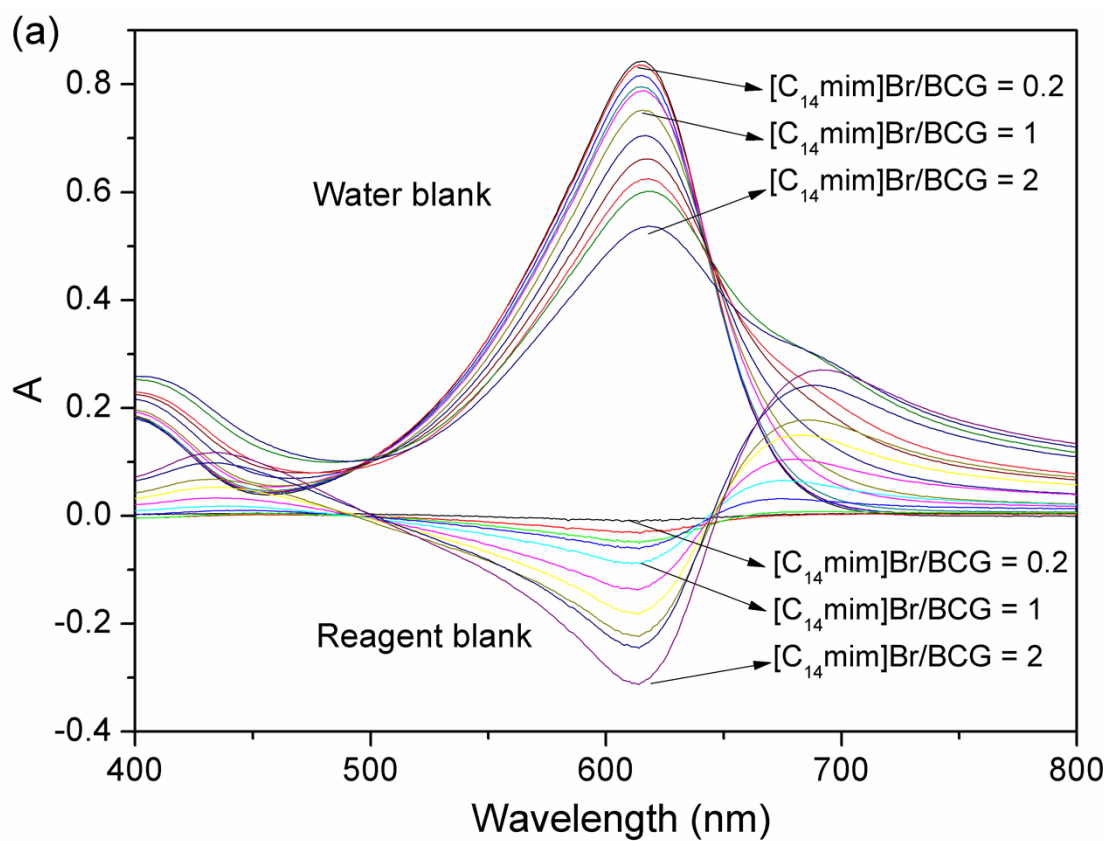
The absorption spectra of (a) BCG- $[C_{14}\text{mim}]\text{Br}$  system; (b) BCG- $[C_{16}\text{mim}]\text{Cl}$  system. Phosphate buffer of pH = 6;  $C_{\text{BCG}} = 0.2 \times 10^{-4} \text{ mol L}^{-1}$ ;  $C_{[C_{14}\text{mim}]\text{Br}}$  or  $C_{[C_{16}\text{mim}]\text{Cl}}$  ranged from 0 to  $0.4 \times 10^{-4} \text{ mol L}^{-1}$ .



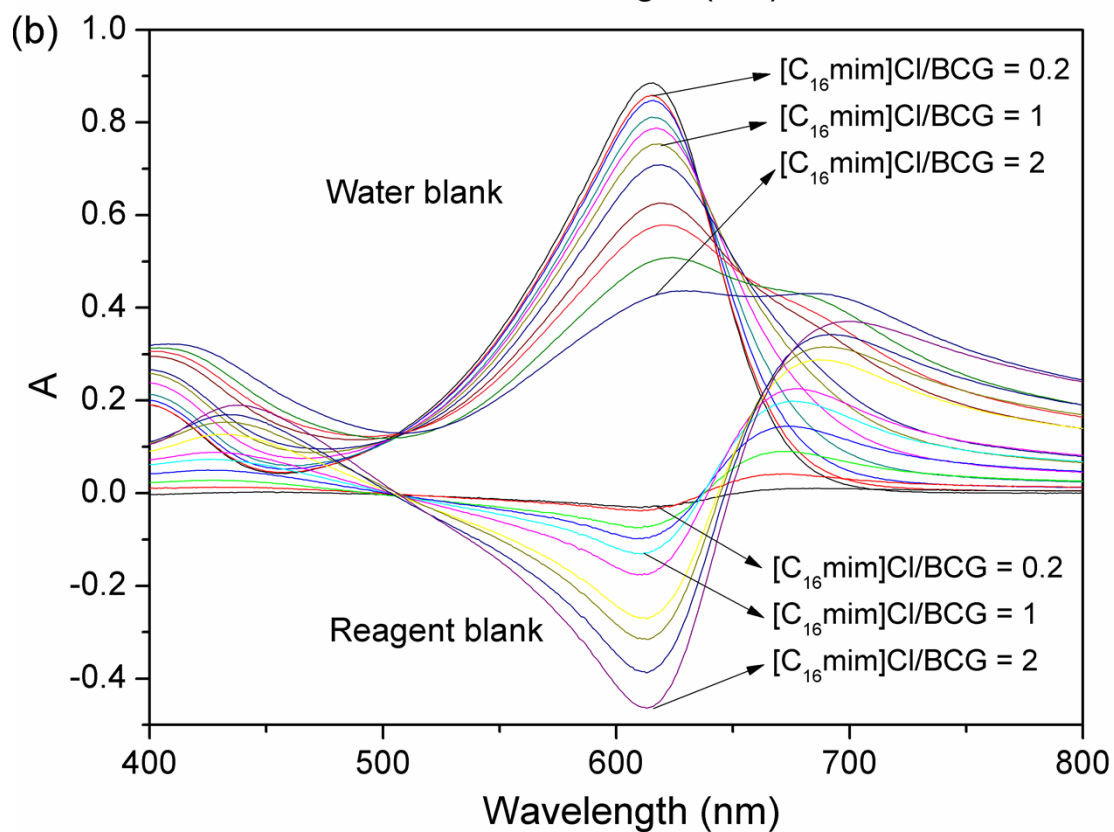
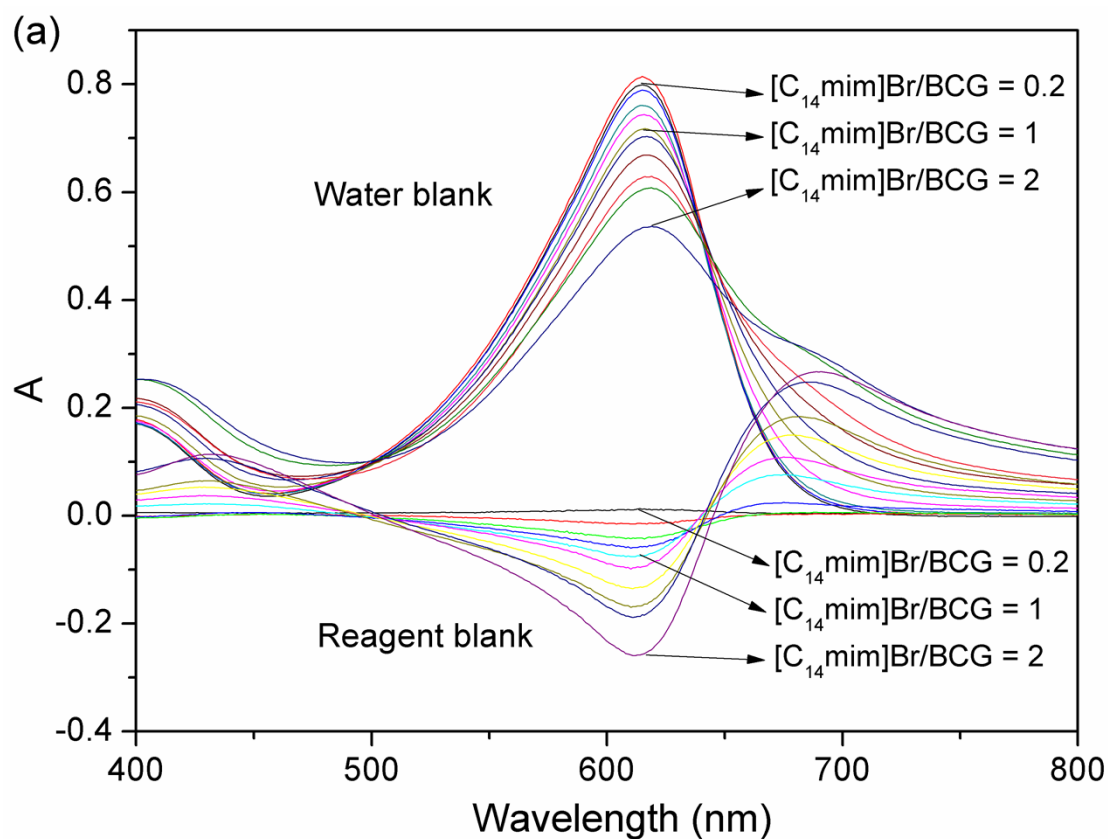
The absorption spectra of (a) BCG- $[C_{14}\text{mim}]\text{Br}$  system; (b) BCG- $[C_{16}\text{mim}]\text{Cl}$  system. Phosphate buffer of pH = 7;  $C_{\text{BCG}} = 0.2 \times 10^{-4} \text{ mol L}^{-1}$ ;  $C_{[C_{14}\text{mim}]\text{Br}}$  or  $C_{[C_{16}\text{mim}]\text{Cl}}$  ranged from 0 to  $0.4 \times 10^{-4} \text{ mol L}^{-1}$ .



The absorption spectra of (a) BCG- $[C_{14}\text{mim}]\text{Br}$  system; (b) BCG- $[C_{16}\text{mim}]\text{Cl}$  system. Phosphate buffer of pH = 8;  $C_{\text{BCG}} = 0.2 \times 10^{-4} \text{ mol L}^{-1}$ ;  $C_{[C_{14}\text{mim}]\text{Br}}$  or  $C_{[C_{16}\text{mim}]\text{Cl}}$  ranged from 0 to  $0.4 \times 10^{-4} \text{ mol L}^{-1}$ .

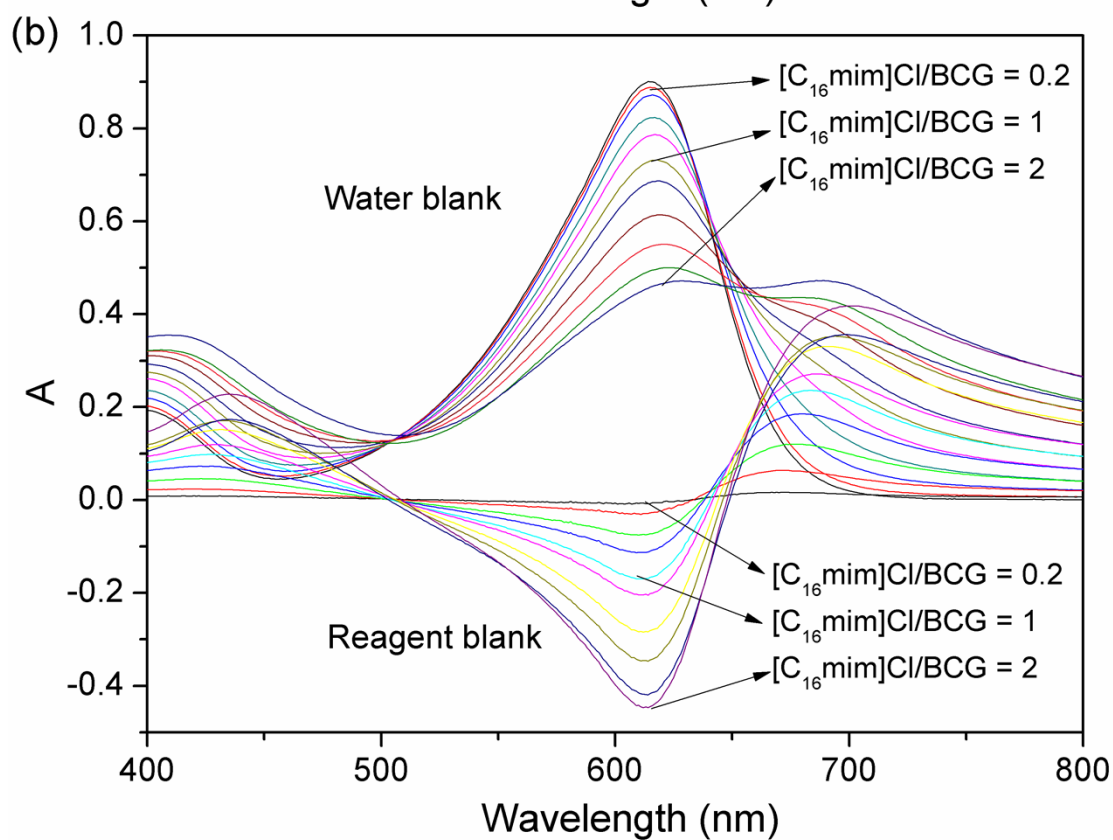
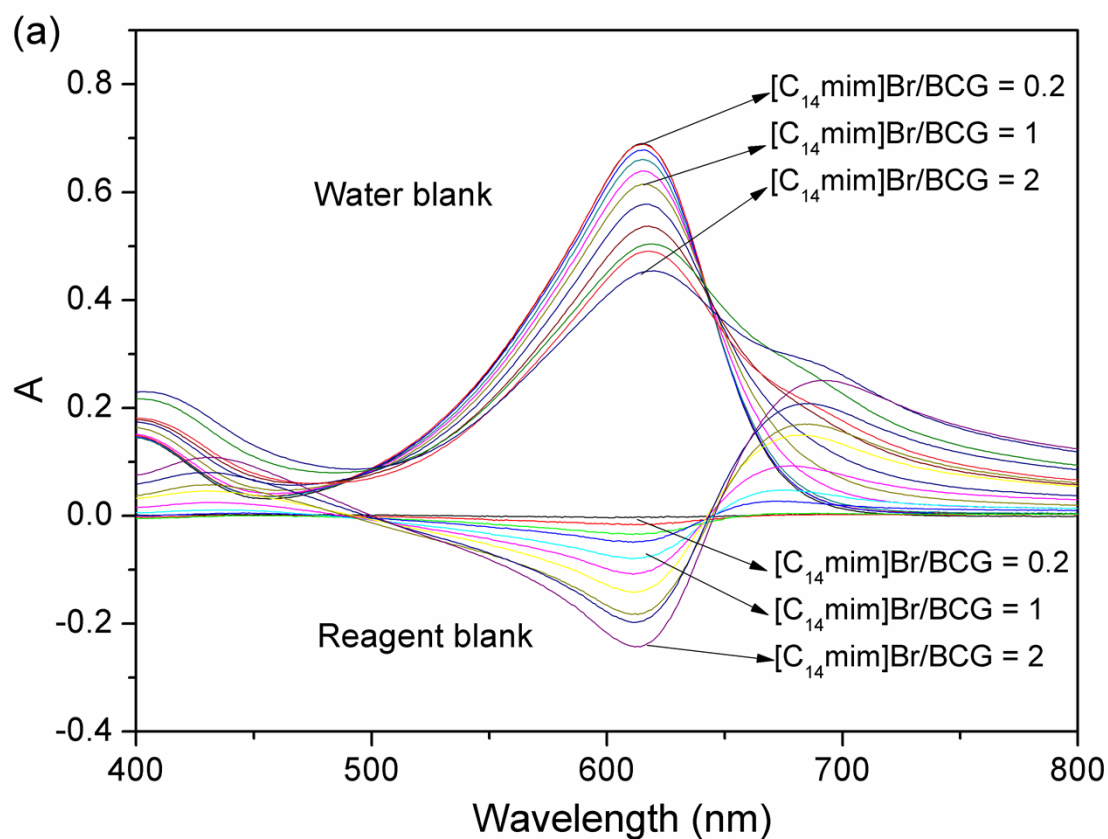


The absorption spectra of (a) BCG- $[C_{14}\text{mim}]\text{Br}$  system; (b) BCG- $[C_{16}\text{mim}]\text{Cl}$  system. Borate buffer of pH = 8;  $C_{\text{BCG}} = 0.2 \times 10^{-4} \text{ mol L}^{-1}$ ;  $C_{[C_{14}\text{mim}]\text{Br}}$  or  $C_{[C_{16}\text{mim}]\text{Cl}}$  ranged from 0 to  $0.4 \times 10^{-4} \text{ mol L}^{-1}$ .



The absorption spectra of (a) BCG- $[C_{14}\text{mim}]\text{Br}$  system; (b) BCG- $[C_{16}\text{mim}]\text{Cl}$  system. Borate buffer of pH = 9;  $C_{\text{BCG}} = 0.2 \times 10^{-4} \text{ mol L}^{-1}$ ;  $C_{[C_{14}\text{mim}]\text{Br}}$  or  $C_{[C_{16}\text{mim}]\text{Cl}}$  ranged from 0 to  $0.4 \times 10^{-4} \text{ mol L}^{-1}$ .





The absorption spectra of (a) BCG- $[C_{14}\text{mim}]\text{Br}$  system; (b) BCG- $[C_{16}\text{mim}]\text{Cl}$  system. Borate buffer of pH = 10;  $C_{\text{BCG}} = 0.2 \times 10^{-4} \text{ mol L}^{-1}$ ;  $C_{[C_{14}\text{mim}]\text{Br}}$  or  $C_{[C_{16}\text{mim}]\text{Cl}}$  ranged from 0 to  $0.4 \times 10^{-4} \text{ mol L}^{-1}$ .