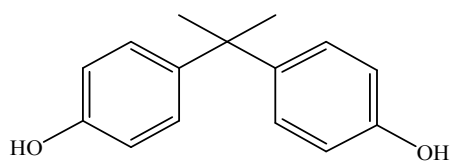


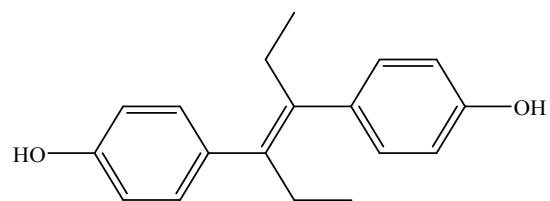
Electronic Supplementary Information

Use of core-shell nanoring amino-functionalized superparamagnetic molecularly imprinted polymer for matrix solid phase dispersion extraction and preconcentration of ultratrace levels of BPA from water samples

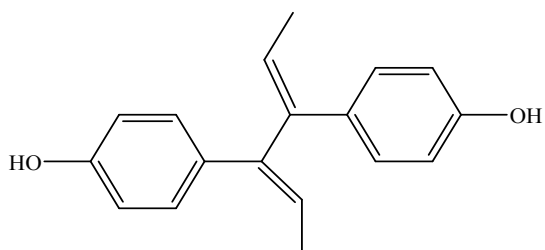
Anal. Methods, 2014, DOI: 10.1039/c4ay00696h



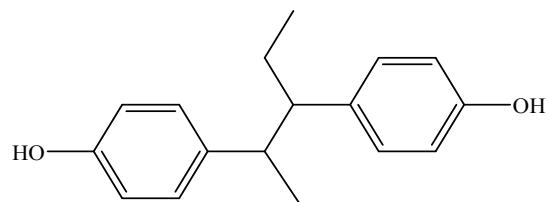
Bisphenol A (BPA)



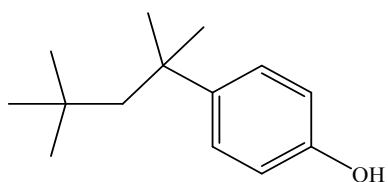
Diethylstilbestrol(DES)



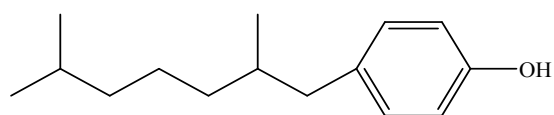
Dienestrol (DE)



Hexestrol (HEX)



4-(tert-octyl) phenol (4-tOP)



4-nonylphenol (4-NP)

Fig. S1. Structural formulas of BPA and its five structural analogs

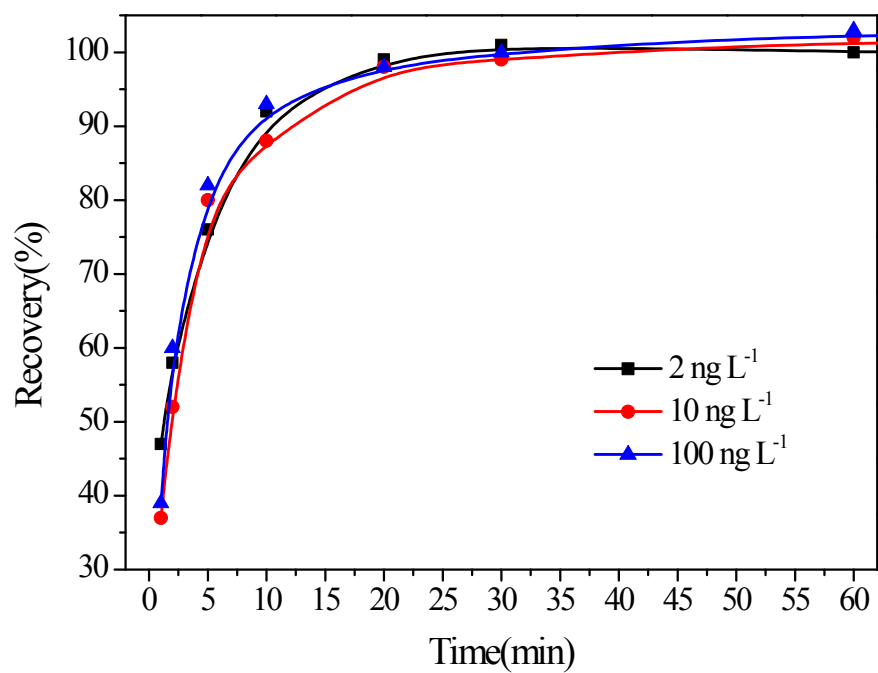


Fig. S2. Effect of the shaking time on BPA recovery.

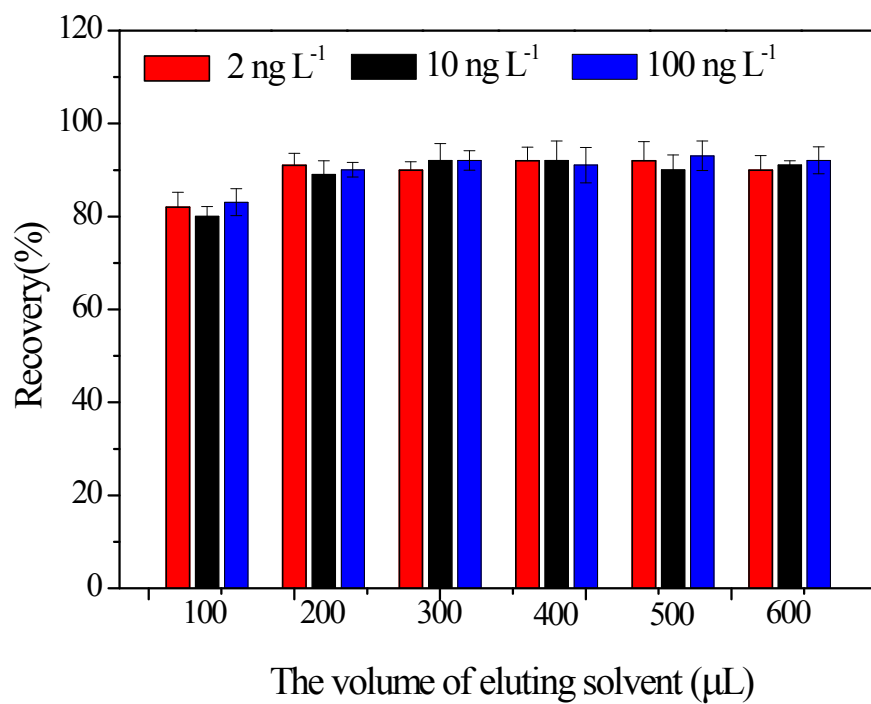


Fig. S3. Effect of the volume of eluting solvent on BPA recovery.

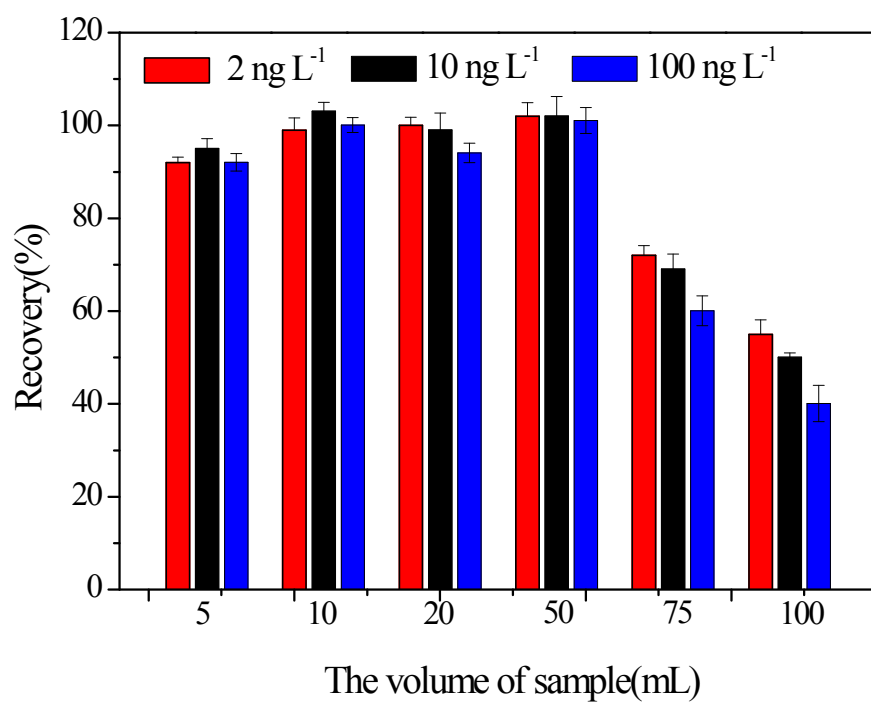


Fig. S4. Effect of the volume of sample on BPA recovery.