

Supporting Information

A New Turn-On Fluorescent Sensor Based on NBD for Highly Selective Detection of Hg²⁺ in Aqueous Media and Imaging in Live Cells

Youming Shen,^{ab} Youyu Zhang,^{*b} Xiangyang Zhang,^{*a} Chunxiang Zhang,^a Linli Zhang,^b Junling Jin,^a Haitao Li,^b Shouzhuo Yao^b

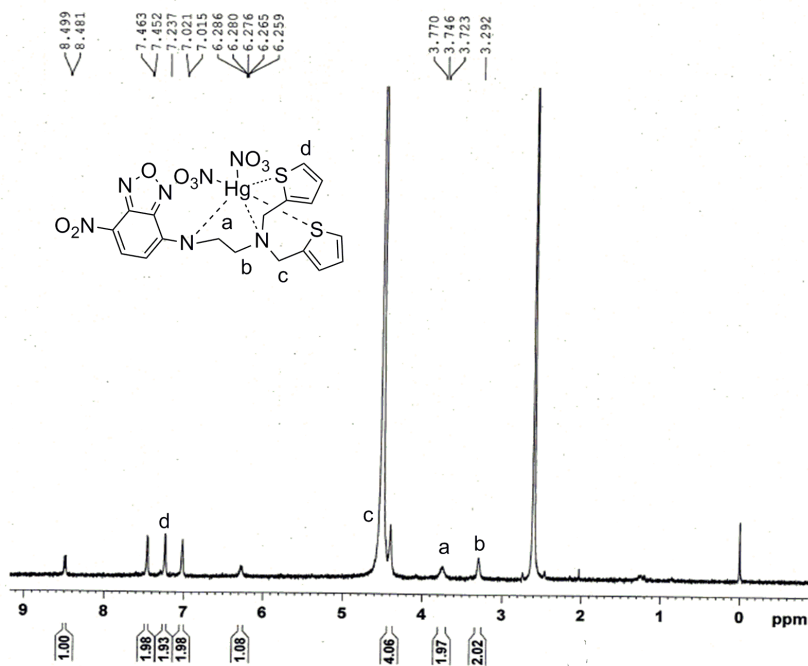
^a College of Chemistry and Chemical Engineering, Hunan University of Arts and Science, ChangDe, 415000, PR China E-mail:zhangxiangy06@163.com

^b Key Laboratory of Chemical Biology and Traditional Chinese Medicine Research (Ministry of Education), College of Chemistry and Chemical Engineering, Hunan Normal University, Changsha 410081, PR China E-mail: zhangyy@hunnu.edu.cn



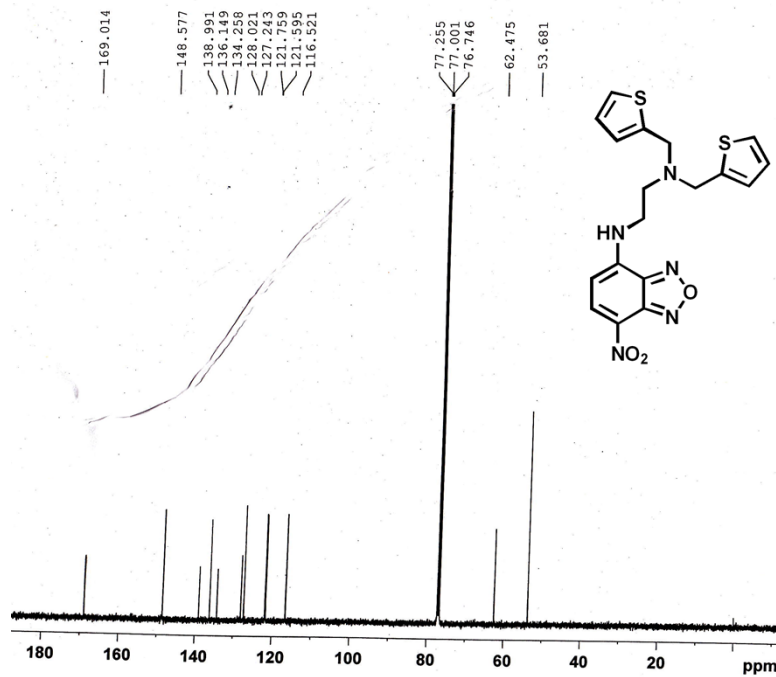
NAME weimingjie20111219
EXPNO 1
PROCNO 1
Date_ 20111219
Time 15.12
INSTRUM spect
PROBHD 5 mm PABBO BB-
PULPROG zg30
TD 65536
SOLVENT DMSO
NS 16
DS 2
SWH 10330.578 Hz
FIDRES 0.157632 Hz
AQ 3.1719923 sec
RG 287
DW 48.400 usec
DE 6.50 usec
TE 293.8 K
D1 1.00000000 sec
TDO 1

CHANNEL f1 =====
NUC1 1H
P1 14.60 usec
PL1 2.00 dB
PL1W 9.90558243 W
SF01 500.1330885 MHz
SI 32768
SF 500.1300062 MHz
WDW no
SSB 0
LB 0.00 Hz
GB 0
PC 1.00

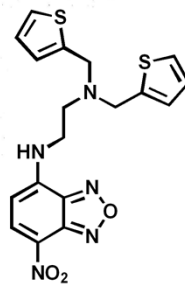


NAME weimingjie20111219
EXPNO 3
PROCNO 1
Date_ 20111219
Time 16.16
INSTRUM spect
PROBHD 5 mm PABBO BB-
PULPROG zg30
TD 65536
SOLVENT DMSO
NS 16
DS 2
SWH 10330.578 Hz
FIDRES 0.157632 Hz
AQ 3.1719923 sec
RG 287
DW 48.400 usec
DE 6.50 usec
TE 293.4 K
D1 1.00000000 sec
TDO 1

CHANNEL f1 =====
NUC1 1H
P1 14.60 usec
PL1 2.00 dB
PL1W 9.90558243 W
SF01 500.1330885 MHz
SI 32768
SF 500.1299571 MHz
WDW no
SSB 0
LB 0.00 Hz
GB 0
PC 1.00



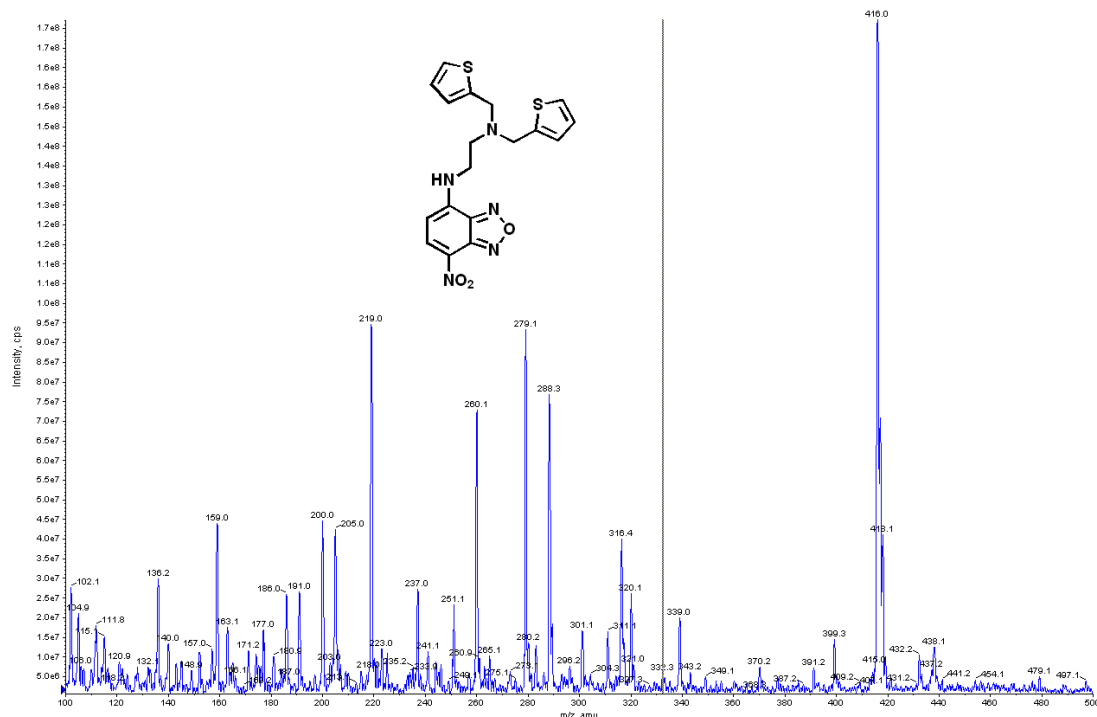
NAME weimingjie20120104
EXPNO 1
PROCNO 1
Date 20120104
Time 18.14
INSTRUM spect
PROBHD 5 mm PABBO BB-
PULPROG zgpg30
TD 65536
SOLVENT CDCl3
NS 430
DS 4
SWH 29761.904 Hz
FIDRES 0.454131 Hz
AQ 1.1010548 sec
RG 2050
DW 16.800 usec
DE 6.50 usec
TE 296.2 K
D1 2.0000000 sec
D11 0.0300000 sec
TD0 1



===== CHANNEL f1 =====
NUC1 13c
P1 9.80 usec
PL1 2.80 dB
PL1W 52.46661758 W
SFO1 125.7703643 MHz

===== CHANNEL f2 =====
CPDPRG2 waltz16
NUC2 1h
PCPD2 80.00 usec
FL2 2.00 dB
FL12 16.89 dB
FL13 16.70 dB
FL2W 9.90558243 W
FL12W 0.32127732 W
FL13W 0.33564481 W
SFO2 500.1320005 MHz
SI 32768
SF 125.7577955 MHz
WDW EM
SSB 0
LB 1.00 Hz
GB 0
PC 1.40

+C1: 30 MCA scans from Sample 1 (2# 01) of 20111206.wiff (Turbo Spray)



+Q1: 30 MCA scans from Sample 3 (2# Q1) of 20111206.wiff (Turbo Spray)

