

The mass spectrum of potential biomarkers in reference standards and urine samples based on UPLC TOF MS in ESI positive mode

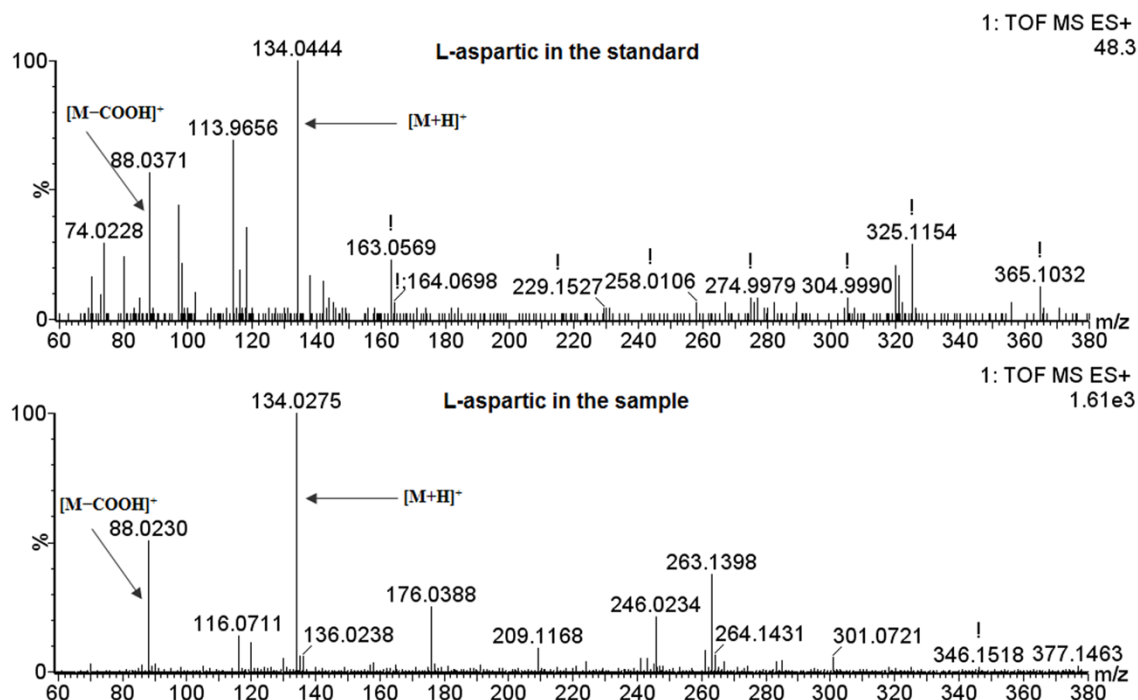


Fig.S1. the mass spectrum of L-aspartic acid in reference standard and the urine sample in positive mode based on UPLC TOF MS

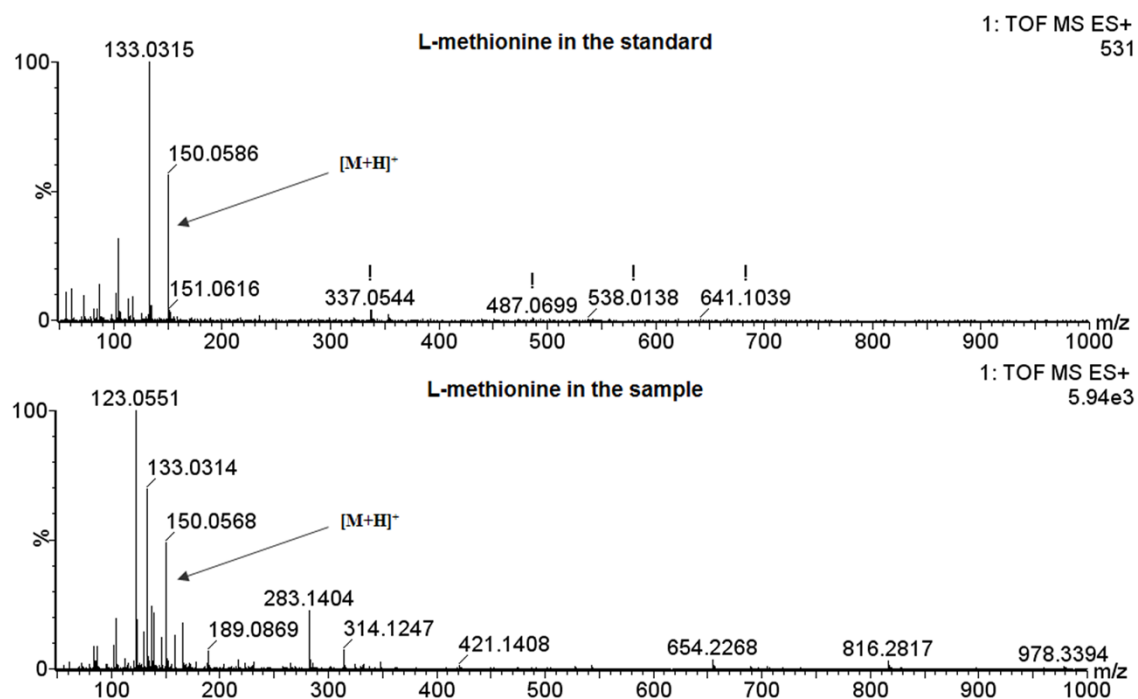


Fig.S2. the mass spectrum of L-methionine in reference standard and the urine sample in positive

mode based on UPLC TOF MS.

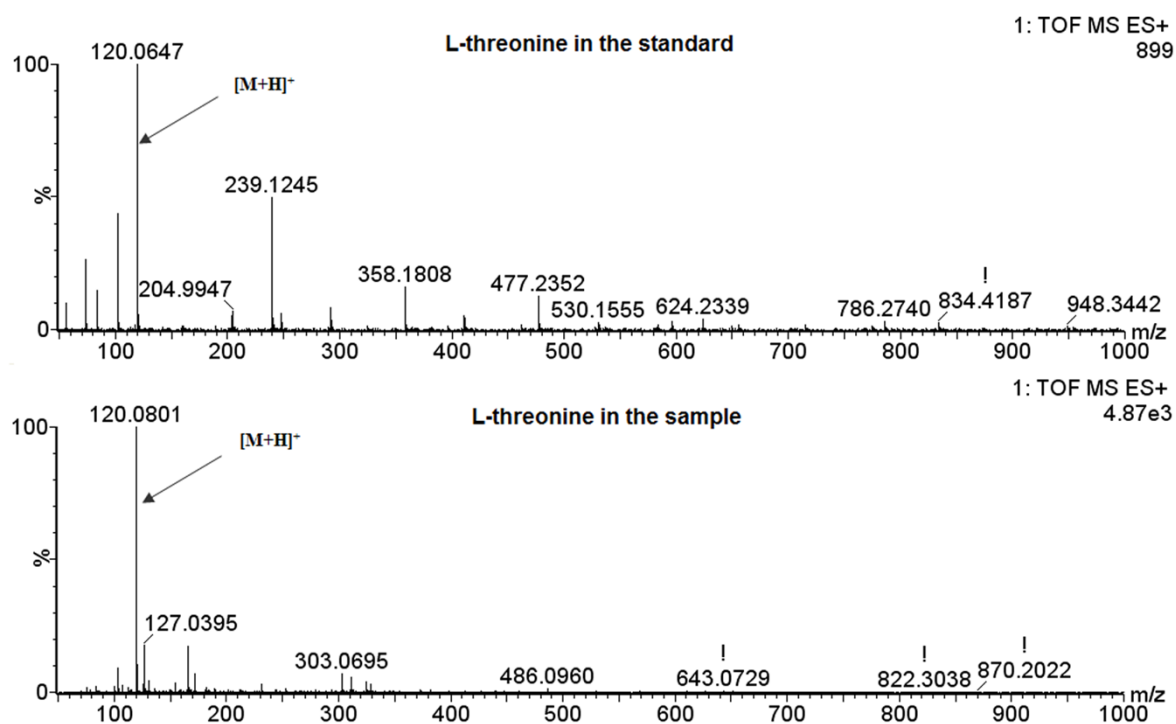


Fig.S3. the mass spectrum of L-threonine in reference standard and the urine sample in positive mode based on UPLC TOF MS.

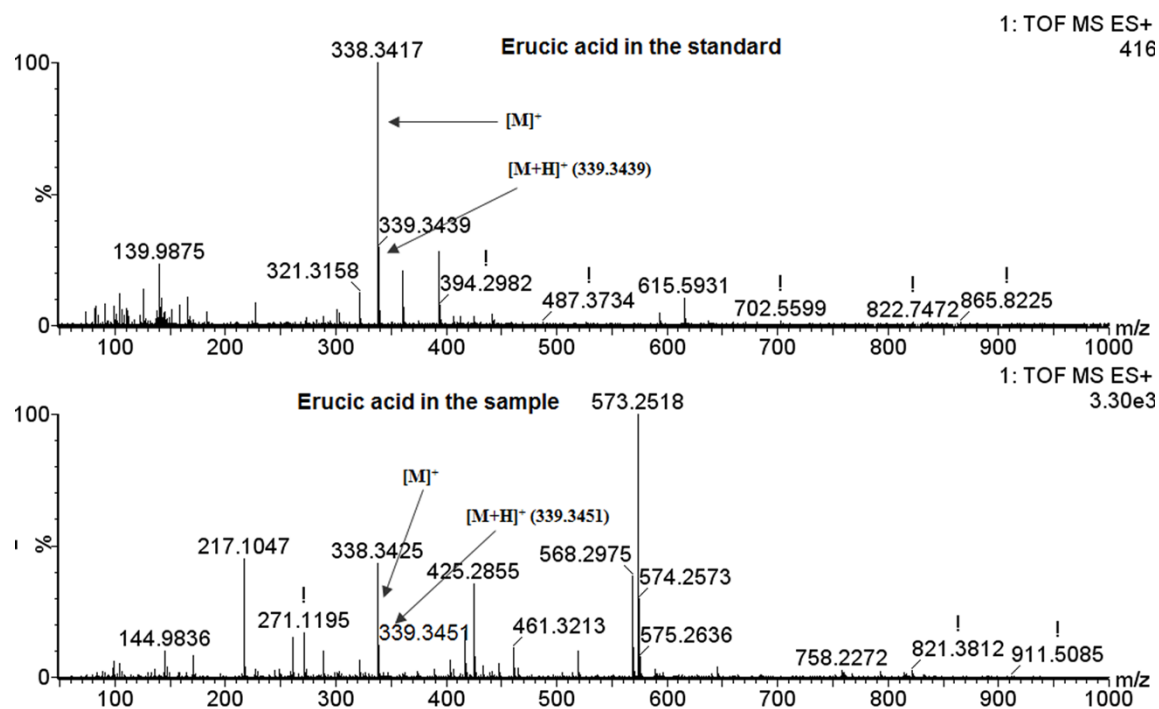


Fig.S4. the mass spectrum of erucic acid in reference standard and the urine sample in positive mode based on UPLC TOF MS.

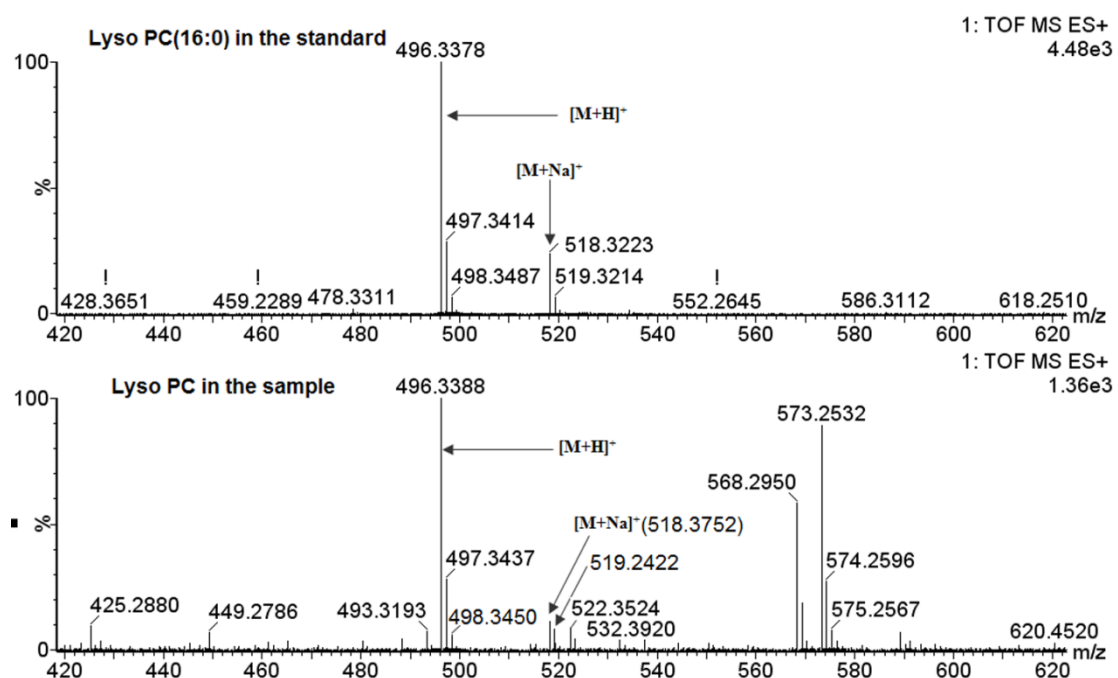


Fig.S5. the mass spectrum of Lyso PC (16:0) in reference standard and the urine sample in positive mode based on UPLC TOF MS.