

Supporting Information

Real-time liquid crystal-based biosensor for urea detection

Mashooq Khan,¹ Young Kyoo Kim,¹ Joon Hyung Lee,² Inn-Kyu Kang¹ and Soo-Young Park^{1}*

¹ School of Applied Chemical Engineering, Kyungpook National University, Daegu 702-701, Republic of Korea

² School of Advanced Materials Engineering, Kyungpook National University, Daegu 702-701, Republic of Korea

* Corresponding author E-mail: psy@knu.ac.kr

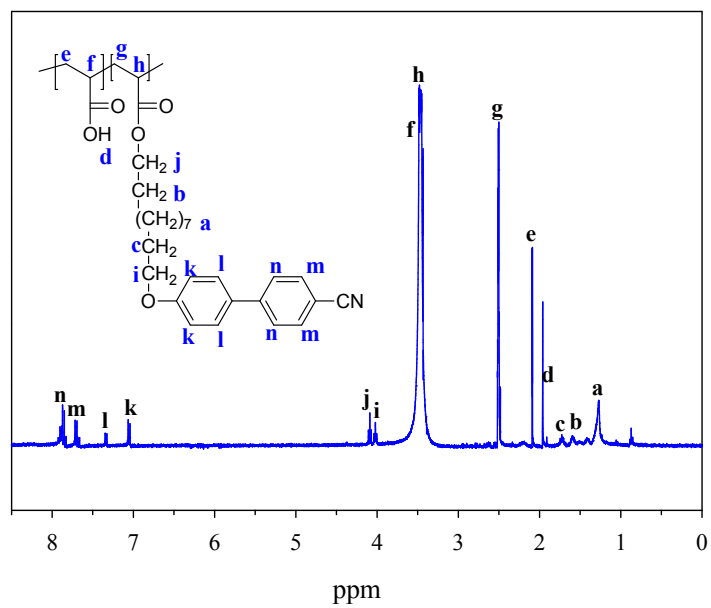


Figure SI 1. ^1H NMR spectrum of PAA-b-LCP.

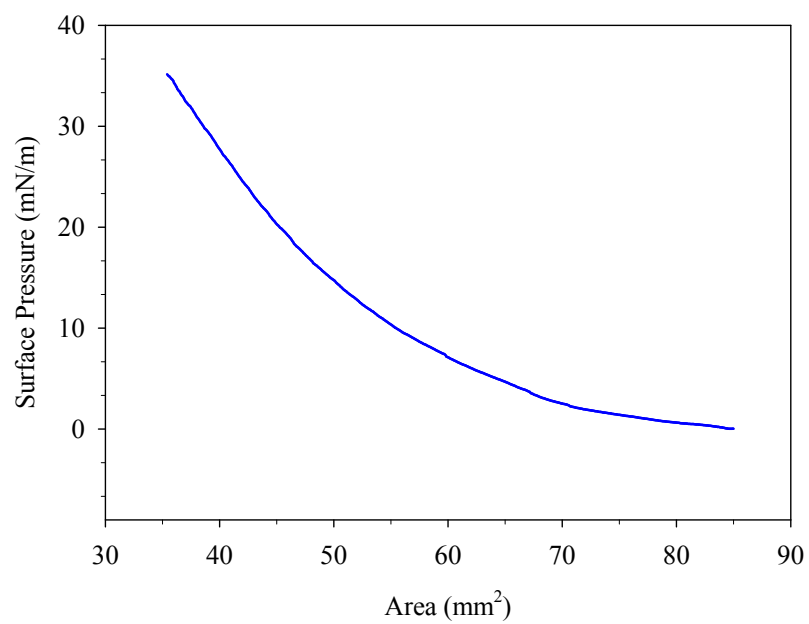


Figure SI 2. LB isotherm curve of the PAA-b-LCP monolayer on water.

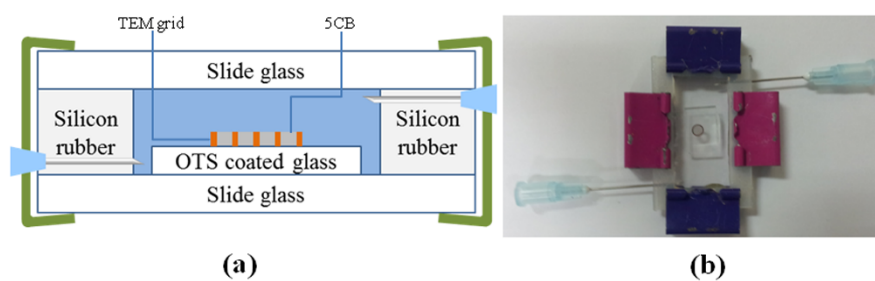


Figure SI 3. (a) Schematic diagram and (b) photograph of the sensor cell containing a TEM grid cell.

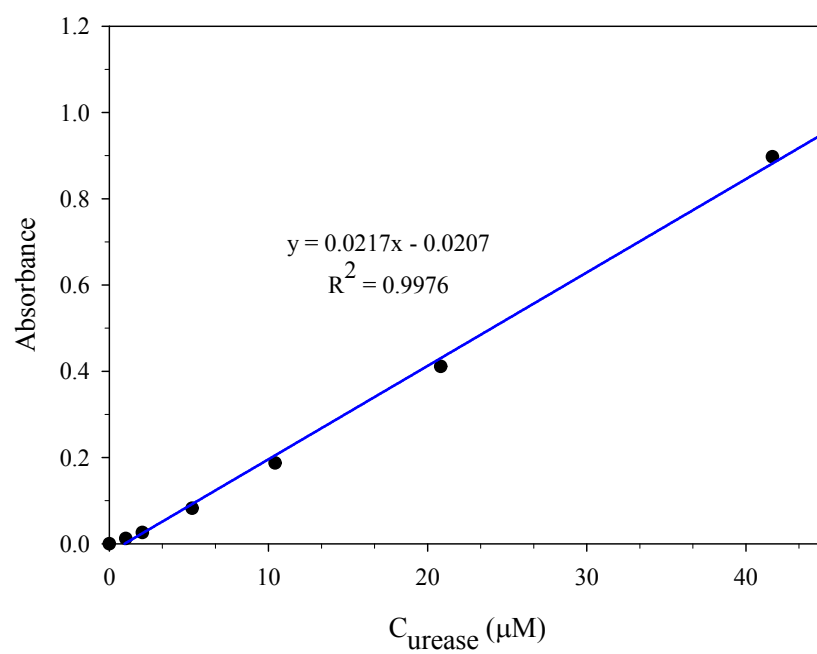


Figure SI 4. Calibration curve of the urease solutions at $\lambda = 276 \text{ nm}$.

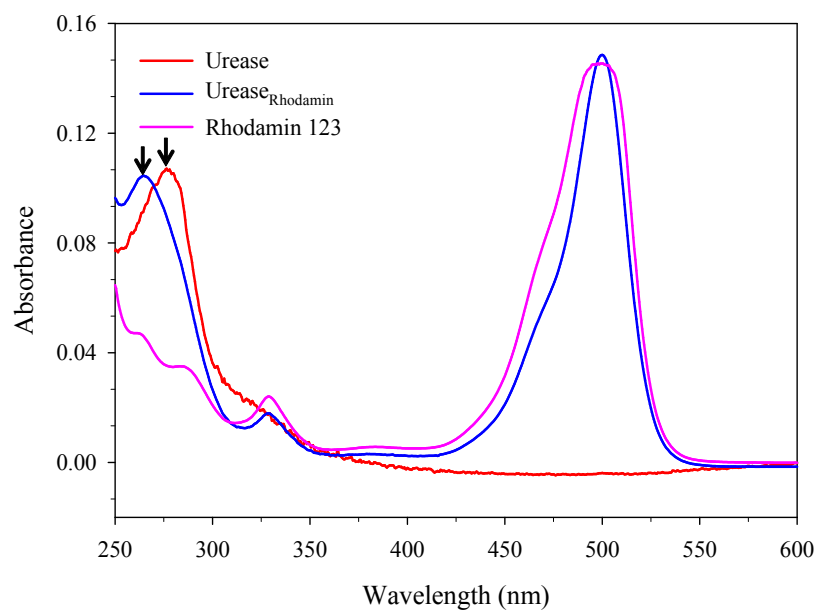


Figure SI 5. UV-VIS spectra of urease, Rhodamin and urease_{-rhodamin-}.