

Supporting Information

Reduced graphene oxide/ α -cyclodextrin hybrid for detection of methionine: electrochemical, fluorometric and computational study

Erhan Zor^{1,2}, Muhammed Esad Saglam³, Sabri Alpaydin³, Haluk Bingol^{3}*

***Corresponding author:** Haluk Bingol - email: halukbingol@gmail.com, tel. +903323238220 - 5499, fax: +903323238225

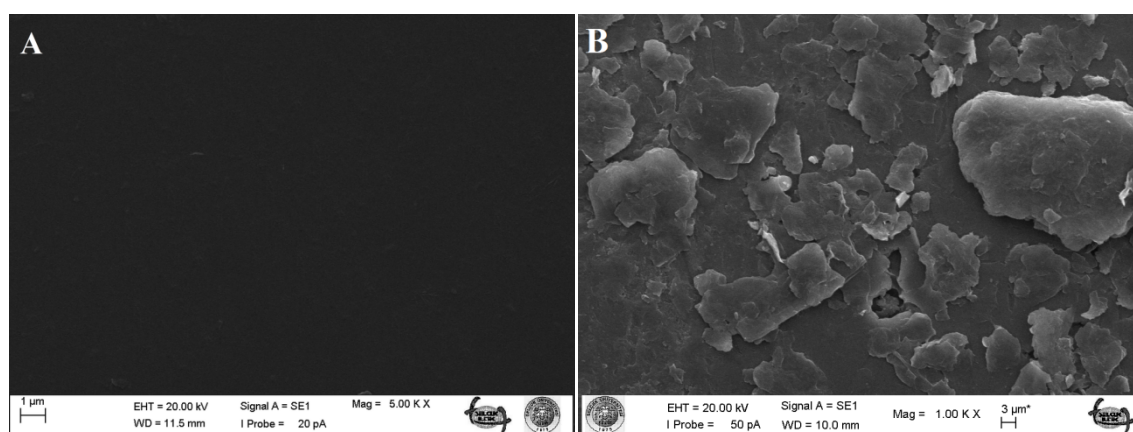


Figure S1 SEM images of the bare GCE (A) and the *rGO*/ α -CD/GCE (B)

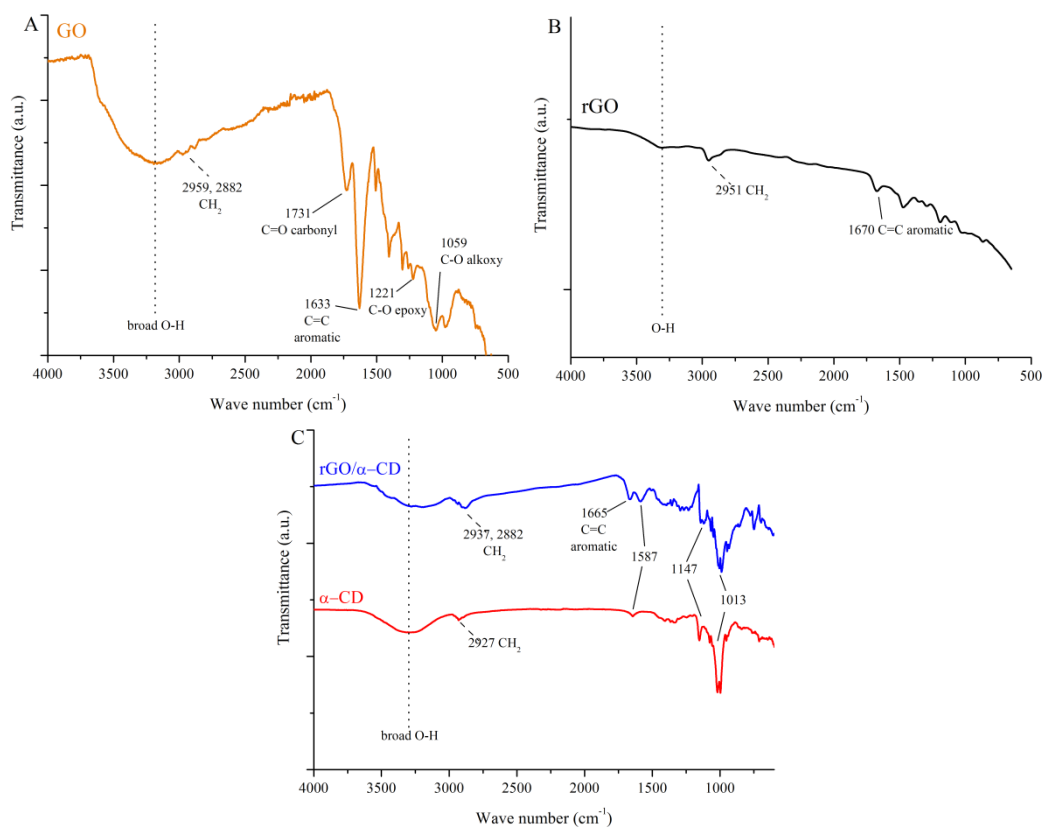


Figure S2 FT-IR spectra of GO (A), rGO (B), α -CD and *rGO/ α -CD* (C) plotted on separate axes.