

## Supplementary Data

**Table 1S** Binding parameters for antibody and tracers

**Table 2S** The parameters of FPIA calibration curves for clothianidin

**Fig. 1S** Characterization of the three tracers binding with the MAb.

**Fig. 2S** The MAb dilution curves for the three tracers.

**Fig. 3S** Kinetic binding of tracer and MAb.

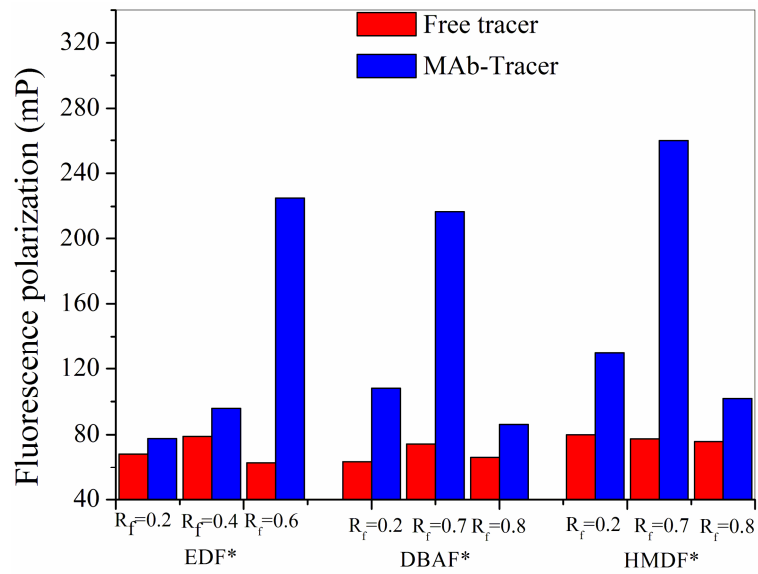
**Fig. 4S** Effect of methanol content on the sensitivity of FPIA.

**Table 1S** Binding parameters for antibody and tracers

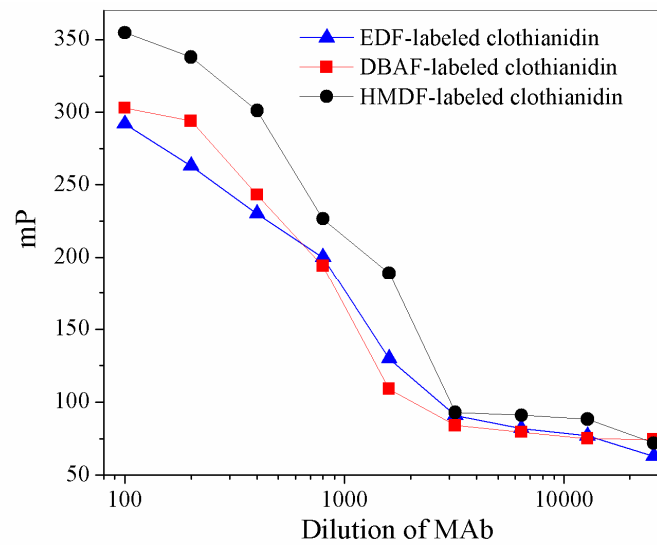
Tracers	MAb concentration ( $\mu\text{g mL}^{-1}$ ) corresponds to 50% binding	Dilution of tracers
EDF-labeled clothianidin	6.25 (800)	400-fold
DBAF-labeled clothianidin	6.25 (800)	250-fold
HMDF-labeled clothianidin	5.00 (1000)	500-fold

**Table 2S** The parameters of FPIA calibration curves for clothianidin

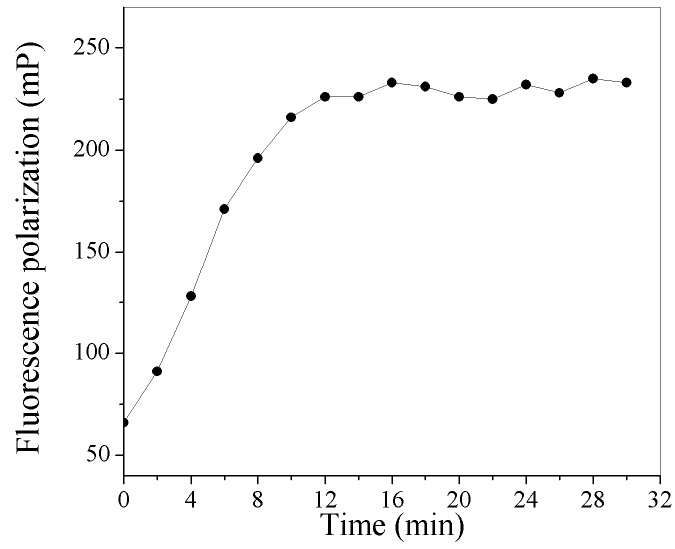
Tracers	$\text{IC}_{50}$ ( $\mu\text{g mL}^{-1}$ )	LOD ( $\text{ng mL}^{-1}$ )	Linear range( $\text{IC}_{10}$ - $\text{IC}_{90}$ ) ( $\mu\text{g mL}^{-1}$ )
EDF-labeled clothianidin	0.728	13.6	0.0136-19.47
DBAF-labeled clothianidin	0.375	10.8	0.0108-4.96
HMDF-labeled clothianidin	0.0873	5.53	0.00553-1.04



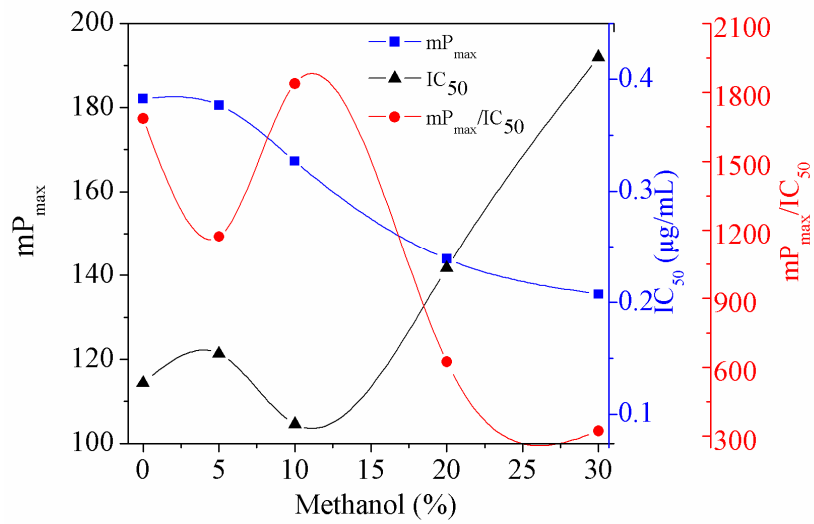
**Fig. 1S** Characterization of the three tracers binding with the MAb. (EDF\*= EDF-labeled clothianidin, DBAF\*= DBAF-labeled clothianidin, HMDF\*= HMDF-labeled clothianidin)



**Fig. 2S** The MAb dilution curves for the three tracers.



**Fig. 3S** Kinetic binding of tracer and MAb.



**Fig. 4S** Effect of methanol content on the sensitivity of FPIA.