

## Supporting information

### **A simple colorimetric sensor based on the conformational change of aptamer and salt-induced gold nanoparticles aggregation**

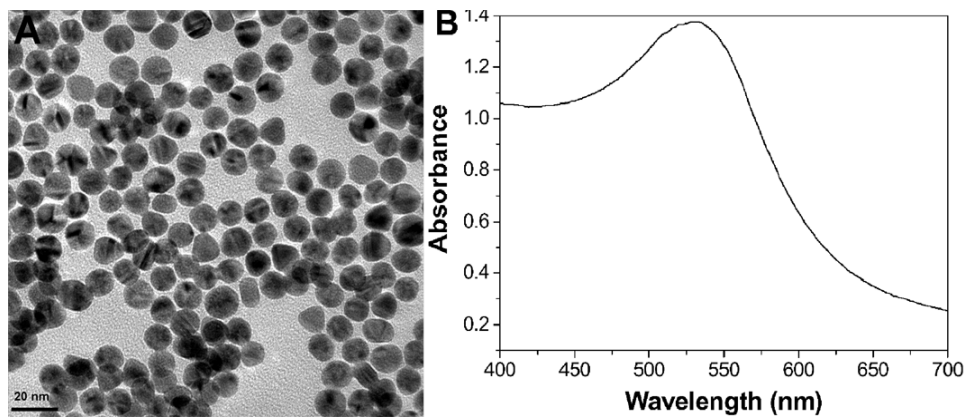
**Zhengbo Chen,<sup>a\*</sup> Junxia Guo,<sup>b</sup> He Ma,<sup>a</sup> Tong Zhou,<sup>a</sup> and Xiaoxiao Li<sup>a</sup>**

<sup>a</sup> Department of Chemistry, Capital Normal University, Beijing, 100048, China

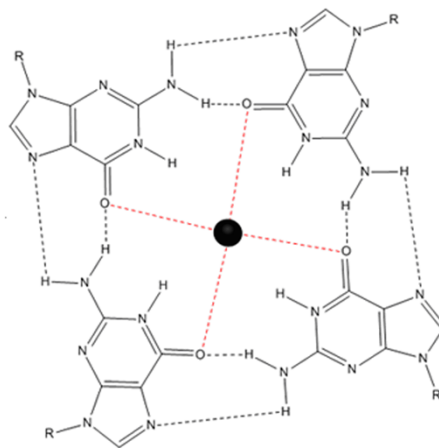
<sup>b</sup> Railway Police College, Zhengzhou, 450053, P. R. China

**\* Corresponding author. Tel.: 010-68903047**

**E-mail: [czb979216@sina.com](mailto:czb979216@sina.com)**



**Fig. S1** (A) Typical TEM image of gold nanoparticles. Scale bar in TEM image is 20 nm. (B) UV-vis absorption spectra of gold nanoparticles.



**Fig. S2** a secondary structure of anti-K<sup>+</sup> aptamer.