

Electronic Supplementary Information

(Paper Number: c4ay01035c)

Manuscript title : Development of ssDNA aptamers for the capture and detection of *Salmonella typhimurium*

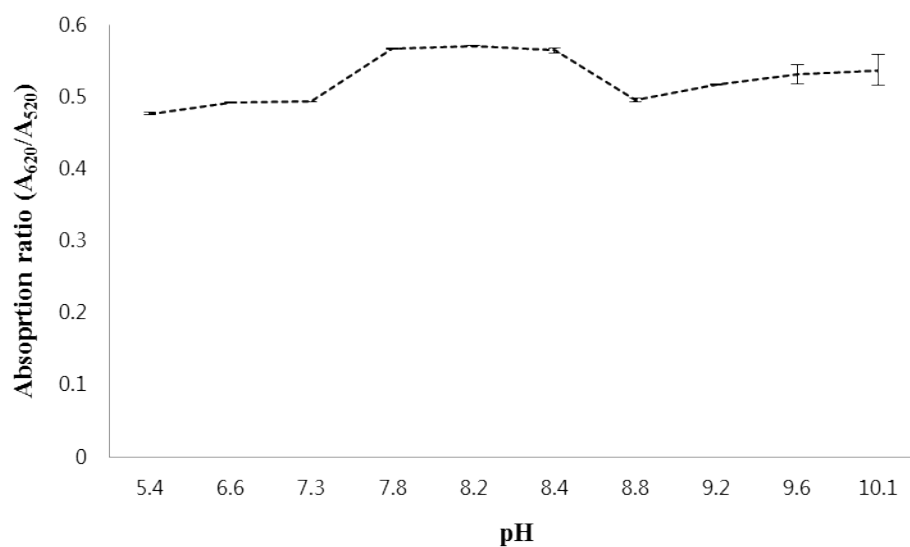


Fig. S1. Signal response of S6-nano Au toward various pH states.

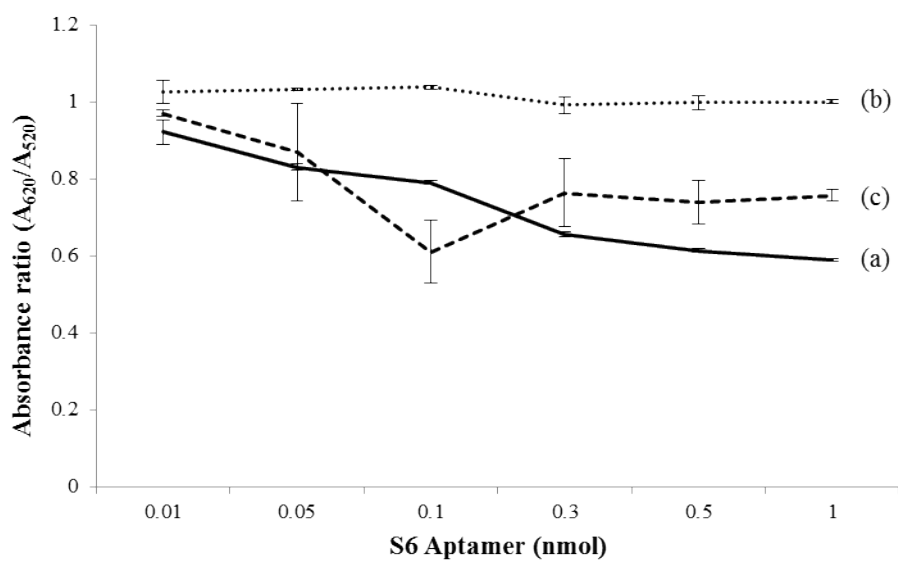


Fig. S2. Selectivity of the biosensor for *S. Typhimurium* detection using different concentrations of S6 aptamer to aggregate nano Au particles: (a) blank, (b) with *S. Typhimurium* 1×10^8 cfu, (c) with *S. aureus* 1×10^8 cfu

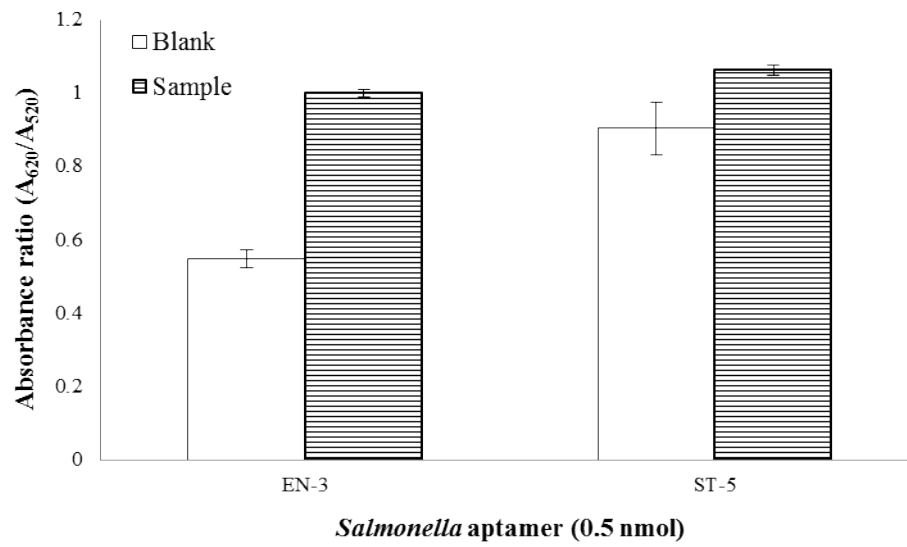


Fig. S3. Selectivity of the biosensor for *S. Typhimurium* detection using S6 aptamer to aggregate nano Au particles: square with blank is treated only buffers (which is blank), square with stripe pattern is treated with *S. Typhimurium* 10^8 cfu